

# Aptean Routing & Scheduling *Calidus Edition*



Ready for What's Next, Now™



**Reducing Empty Running Miles**      **Support When You Need It**      **Fleet Efficiency Improvements**

## The Benefits of Using Apteian Routing & Scheduling *Calidus Edition*

By supporting their logistics operations using the Apteian routing and scheduling product set, our customers benefit from:

- ▶ Optimizing driver miles and reducing empty running miles
- ▶ Accurate capture of information, especially proof of delivery reduced claims
- ▶ Efficiencies gained from integrating and running the transportation and warehouse operations side by side
- ▶ Supported adherence to service levels to reducing the cost of service failure
- ▶ Significant reduction in cost of lost pallets and equipment through effective pallet/equipment tracking
- ▶ Improvements in customer service by accessing up to date, accurate information, and the ability to react to trip changes by communications with drivers en-route
- ▶ The ability to deal with peak loads at busy times of the year due to the scalability of the Apteian systems
- ▶ Customer retention through high service levels and ease of doing business with facilities, such as web portals for customer orders and the tracking and tracing of shipments
- ▶ Fleet efficiency improvements
- ▶ Overall savings on time and cost through system-driven controls and efficiencies
- ▶ Predictable costs of system deployment through Apteian's unique commercial models
- ▶ Minimizing disruptions to business operations with support when you need it
- ▶ Compatibility with Apteian WMS *Calidus Edition* for an integrated multi-depot/warehouse logistics operation
- ▶ Monitoring revenue, costs and profitability with access to historic records and profitability analysis
- ▶ Access to all data via a web portal, allowing you to monitor KPIs and capabilities in real time



## Improve Your Transportation Operations with Apteon Routing & Scheduling *Calidus Edition*

Apteon Routing & Scheduling *Calidus Edition* is an industry-leading solution to help manage your transportation operations efficiently and effectively. Whether you are a logistics company operating logistics contracts for a number of clients or an in-house logistics operation working on a dedicated basis, Apteon Routing & Scheduling provides features for:

- ▶ Management of orders at shipment and item level, with orders captured electronically through flexible EDI capability, on screen or through an online web portal
- ▶ Planning and optimization of vehicle trips to optimize driver miles and reduce empty running miles. Managing the execution of the trips from loading and dispatch through to final proof of delivery
- ▶ Integrated pallet/equipment tracking to minimize the all too often high cost of losses
- ▶ Real-time communications with in-cab or mobile devices for real-time data capture as trips are executed – allowing greater visibility and tracking of the fleet and enabling you to record first-hand the outcome of each collection/delivery stop
- ▶ Comprehensive tariff and billing facilities to enable you to charge for the services carried out

Apteon Routing & Scheduling *Calidus Edition* truly has everything you would expect from an industry-leading route planning application. Which is why it's used within major logistics operations across the world, supporting operations for leading household names in retail, wholesale and manufacturing, whether it be inbound movements from abroad, primary distribution, distribution to stores or home delivery.

The Apteon systems have been developed to provide solutions based on innovative commercial models - from a conventional license and services approach, through to a fully managed service. We provide the option of a fully managed service which is paid for through a single regular charge based on system usage, payable as the system delivers benefits.



## A Versatile Product Suite

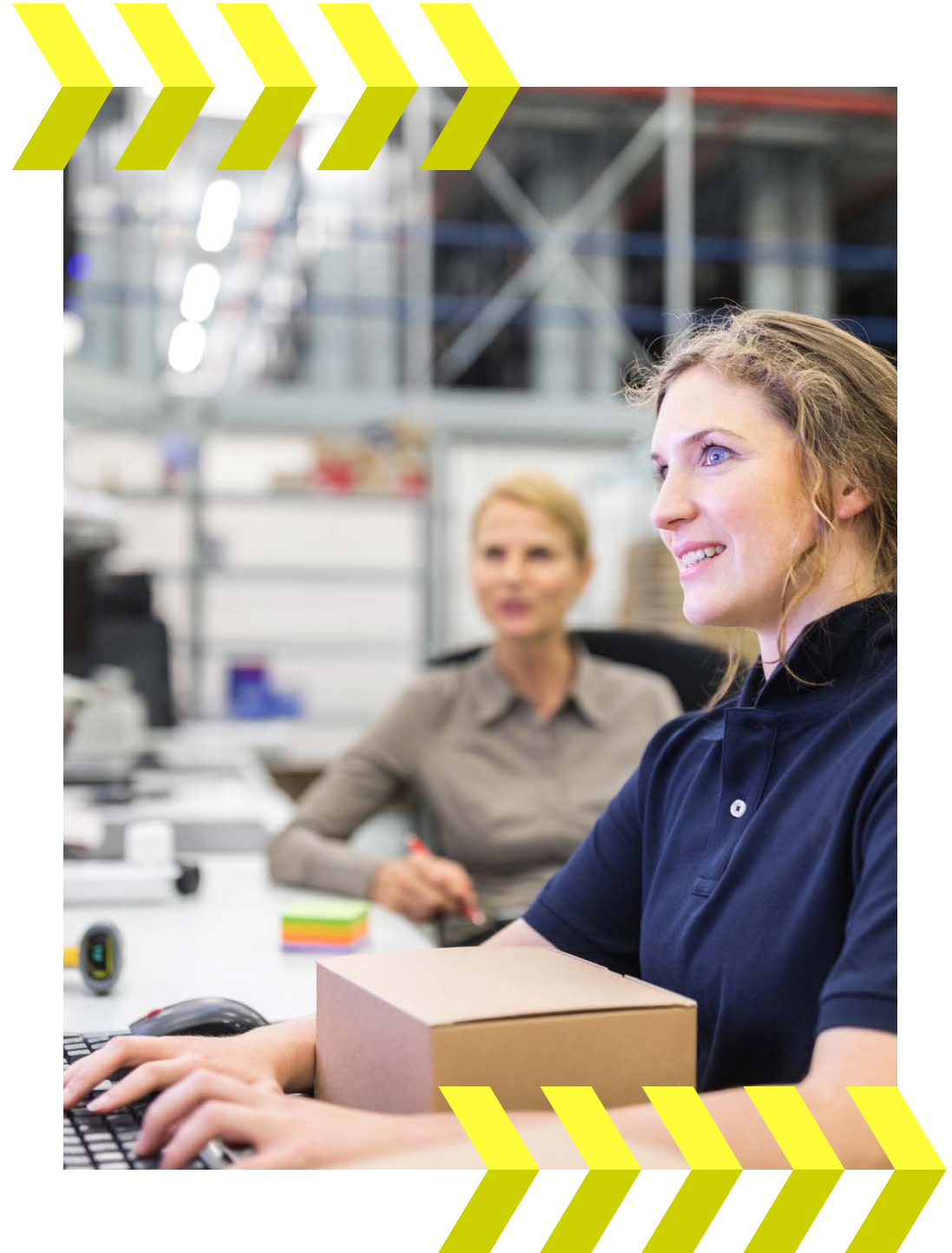
Aptean Routing & Scheduling *Calidus Edition* can be configured to meet a broad spectrum of specific needs, including:

- › Multi-client contract operation with parameterization by client for 3PL organisations
- › Support for international operation:
  - » Multi-lingual
  - » Multiple time zones
  - » Multi-currency
- › Support company structure:
  - » Countries
  - » Multi-branch
  - » Depots (including allocation of revenues/cost across locations and business types)
- › Own fleet and sub-contracted transportation

## Optimization and Planning

Specific operations require varying levels of optimization and planning, all of which are offered comprehensively within our software:

- › Regular job plans - route templates for particular days
- › Dynamic routing and scheduling
- › Calculation of planned arrival and departure times for each delivery to meet order windows
- › Zip code driven routing
- › Booking times for deliveries and collections
- › Automatic or manual allocation of jobs to trips
- › Vehicle limits check during load build
- › Local and trunk trips with trailer swap facility
- › Capability for collections and deliveries on same trip
- › Support for back loading
- › Own fleet and sub contract operations
- › Allocation of drivers, tractors and trailers to trips
- › Option to post unallocated loads onto freight exchange web portals for sub-contractor tendering
- › Record special requirement for a route/delivery point
- › Cross dock
- › Exceptions handling





## Order Capture and Management

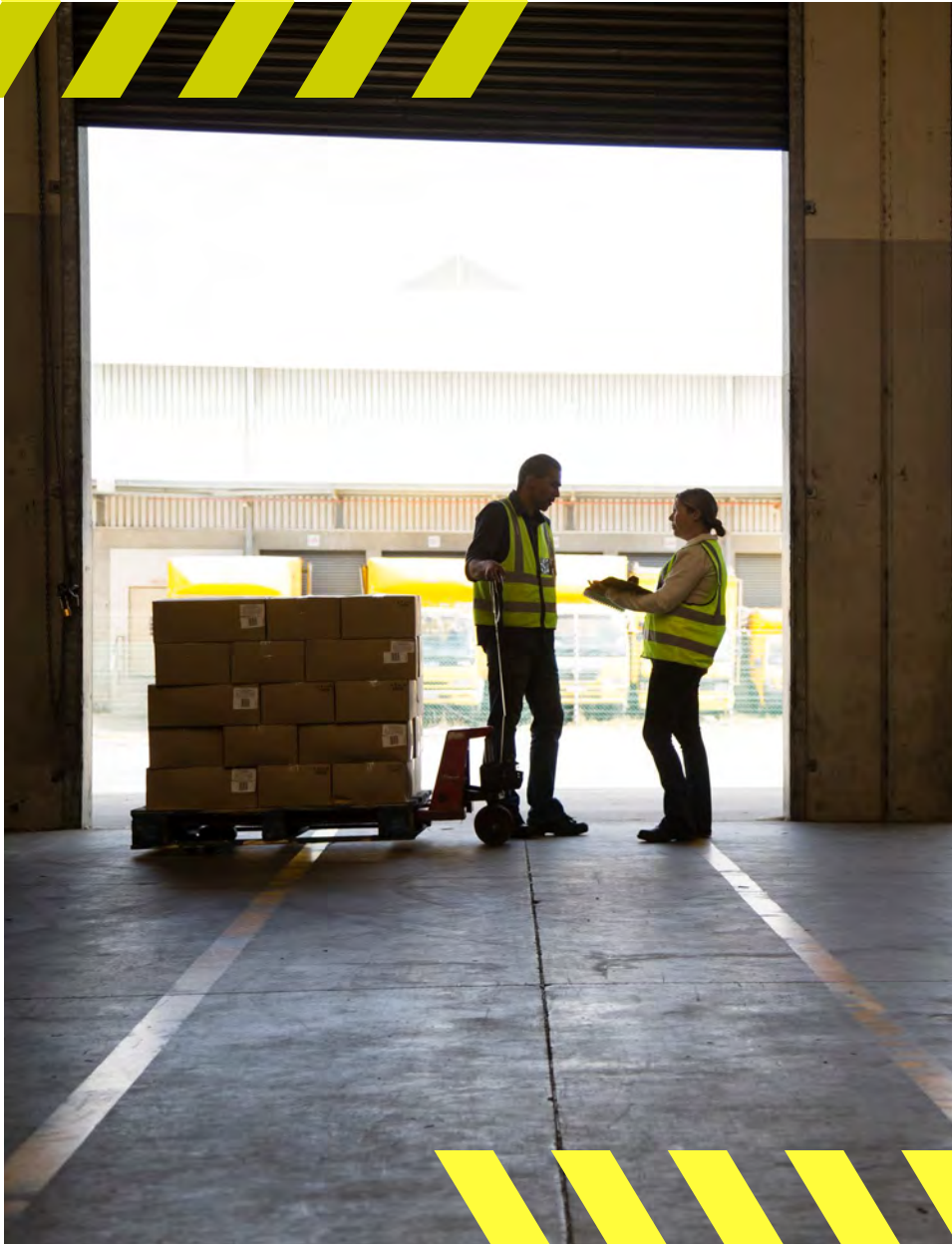
Aptean Routing & Scheduling supports the management of orders created with the following features:

- ▶ Multi-client contract operation with parameterization by client for 3PL organisations
- ▶ Ability for customers to place orders over the web or via EDI
- ▶ Flexible on screen option to input and amend orders
- ▶ Orders can be received at a shipment level or at a detailed order and item level
- ▶ Flexible and comprehensive date-driven orders with selection of orders for planning or reporting can be done based on a variety of parameters

## In-Cab Communications

Our software provides interfacing to in-cab systems and can be used in conjunction with third party in-cab solutions. Features for in-cab integration includes:

- ▶ Ability to parameterize whether a vehicle has an in-cab system and its type
- ▶ Synchronize locations and resource master data
- ▶ Download of the load manifest and trip plan to the in-cab system
- ▶ Option to transmit and receive execution data to/from the in-cab unit during the trip or on return to the depot, including arrival and departure times at locations
- ▶ Upload of POD information can include scanned image which is then available to address customer queries either on screen within the operation or over the web



## POD and Driver Debrief

Aptean Routing & Scheduling *Calidus Edition* provides comprehensive information on the outcome of each collection and delivery with:

- › Collection of information from in-cab systems via real time or batch download
- › Capturing of vehicle check information
- › Recording of time information for start, stop, waiting and adherence to booking slots
- › Delivery/collection outcome information including quantities in/out, exception information with reason codes
- › POD information available to notify/cross check returns to warehouse receipts
- › POD scanning with web access to scanned image

## Pallet and Equipment Tracking

Aptean Routing & Scheduling includes the tracking of pallets and equipment as an integral part of the trip execution with:

- › Definition of equipment by type
- › Capture of quantity and types of equipment delivered and collected at each stop point
- › Stock balances of pallets and equipment by type for each depot, pick up and drop point



# Are You Ready to Learn More?

Aptean Routing & Scheduling *Calidus Edition* can help improve your transportation operations?

Contact us at [info@aptean.com](mailto:info@aptean.com) or visit [www.aptean.com](http://www.aptean.com).



Aptean provides very specific industries with very specific ERP, supply chain management, and customer experience solutions. In today's fast-paced, highly competitive economy, organizations don't have time to waste forcing homegrown software, spreadsheets, and one-size-fits-all solutions to do things they were never designed to do. Aptean is on a mission to end those work-arounds – with industry-specific solutions instead of generic software, expert support instead of making you go it alone, and a steady influx of new ideas instead of the status quo.

For more information, visit [www.aptean.com](http://www.aptean.com).