

# Designed for Fashion. Powered by AI. Built for Growth.

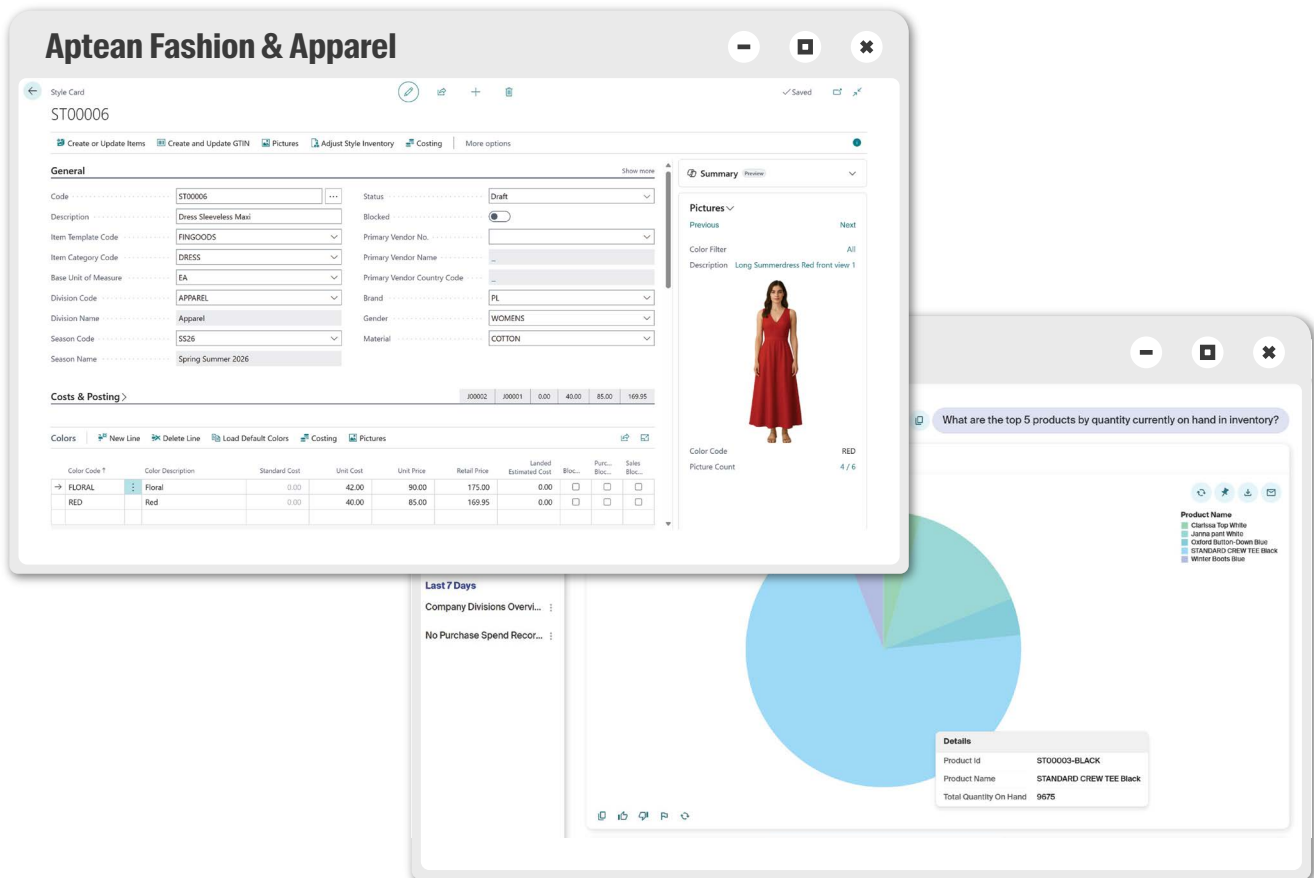
The screenshot displays the Aptean Fashion & Apparel interface. At the top, the header reads 'aptean • Aptean Fashion & Apparel' and 'Style Card'. Below the header, there are navigation tabs: 'Create or Update Items', 'Create or Update GTIN', 'Pictures', and 'Adjust Style Inventory'. The main content area is divided into two sections: 'General' and 'Cost & Posting'. The 'General' section includes fields for 'Code' (F0002), 'Description' (Ametz Jacket), 'Item template code' (1000), 'Item Category code' (Jacket), 'Base Unit of Measure' (EA), 'Division Code' (Men), 'Division name' (Men), 'Season code' (FW27), 'Season name' (Fall Winter 2027), and 'Status' (Approved (Pres)). The 'Cost & Posting' section includes 'Cost Details' (Purchase Price Code: AJFW0002) and 'Posting Details' (Gen. Prod. Posting Group: Retail). On the right side, there is a 'Pictures' section with a 'Previous' and 'Next' navigation bar, and a large image of a man wearing the 'Ametz Jacket'.

Complex style, color and size variations make apparel inventory a moving target. Add months-long supply chains and product life cycles that can end in a single season, and the math is unforgiving. If you get planning wrong, you face stock-outs that stall sales or excess stock that's cleared in margin-killing markdowns.

Aptean Fashion & Apparel puts you back in control. It's a purpose-built ERP that brings a SKU Matrix and smart allocation SKU matrix and smart allocation logic keep supply aligned with lightning-fast demand shifts, while an AI-powered platform, AppCentral, connects the applications your team uses most—from product development to the warehouse to finance—in one trusted hub.

## Benefits

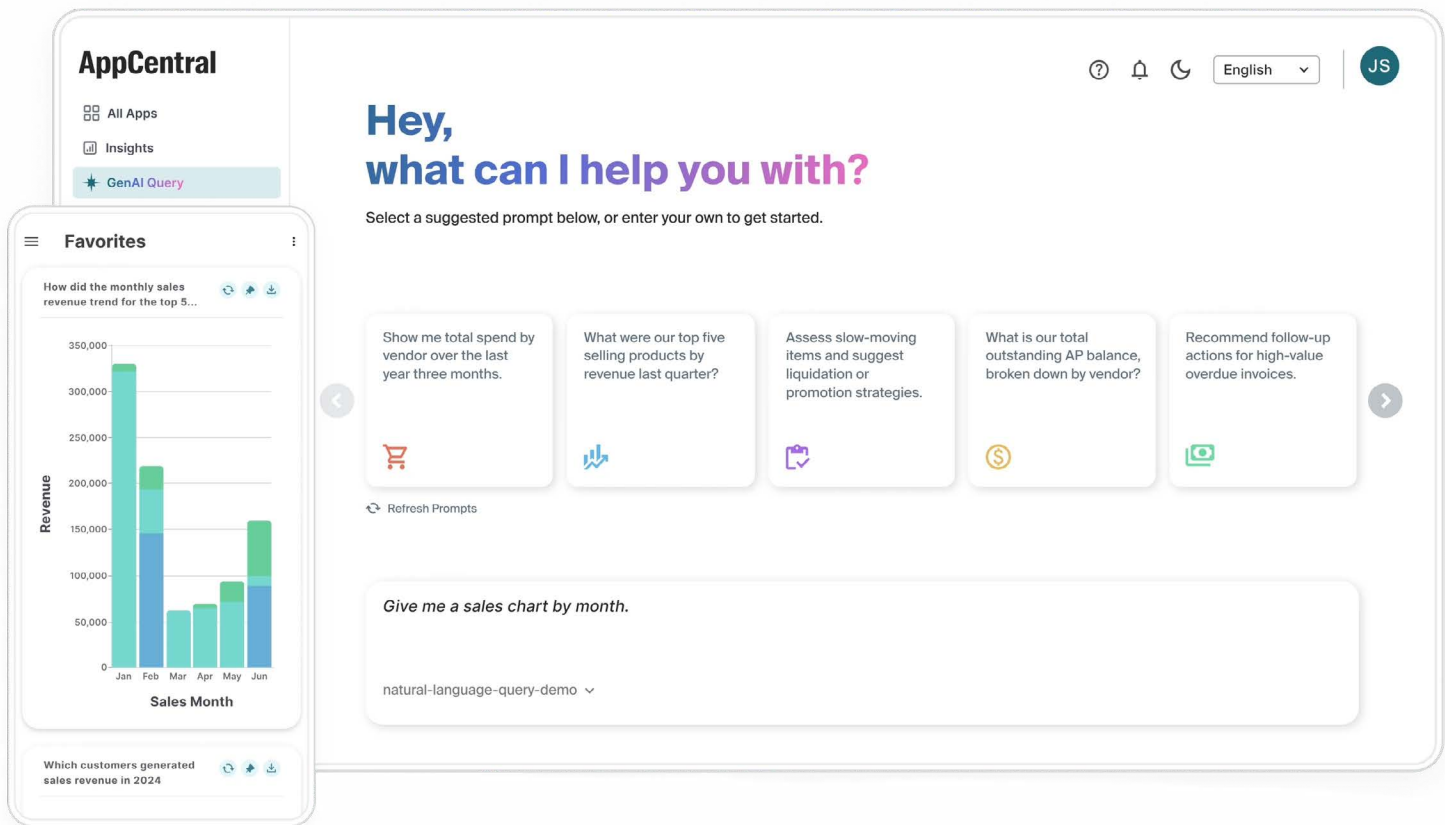
- › Simplify complex SKUs with style-season-color-size management
- › Prevent stock-outs and overstock with smart allocations
- › Make decisions and execute faster with AI-native application and AI Agents
- › Streamline work across solutions with a platform of seamlessly interoperable applications
- › Scale confidently with an ERP built on Microsoft Dynamics 365 Business Central



## Industry Depth Meets AI Power—All in One Platform

Aptean Fashion & Apparel weaves in decades of fashion know-how into every transaction, then supercharges it with Aptean Intelligence and the AppCentral ecosystem. The result is a single, AI-ready workspace that can execute in step with the pace of style—so you can spend less time juggling systems and more time growing your brand.

- **Designed for fashion and apparel** – The built-in SKU matrix and smart allocation rules keep even the most complex assortments profitable and perfectly positioned.
- **AI turns data into direction instantly** – GenAI Query, predictive models and AI agents surface answers and automate routine work, freeing your team for high-value activities.
- **AppCentral connects every workflow** – Pre-integrated ERP, PLM, EDI, payments and shipping apps share a unified platform, eliminating silos and prevents manual re-keying.
- **Microsoft underpins future-proof scale** – Built on Dynamics 365 Business Central, Aptean Fashion & Apparel stays secure, familiar and ready to grow alongside your business.



## Aptean Intelligence

### AI That Works the Way Fashion Moves

Aptean Intelligence is AppCentral's built-in AI that turns data into direction. It automates workflows, deploys rolebased agents flags trends before they become bottlenecks and more, so your team creates instead of calculates.

- › **GenAI Query** – Ask anything about your operations and get instant answers and dive into details with follow up questions.
- › **AI Agents** – Put AI to work across your operations: Automate repetitive tasks like quoting, order processing and inventory tracking.
- › **Intelligent Workflows** – Automate and streamline cross-functional workflows, so you can focus on the strategic work that drives the business forward.
- › **Role-based AI Workspaces** – Give every user a command center personalized for their role. Bring together data, applications and agentic AI assistants so your team can perform at their best.
- › **Predictive Intelligence** – Make proactive, confident decisions using predictive AI agents to see emerging trends and potential risks.



# AppCentral

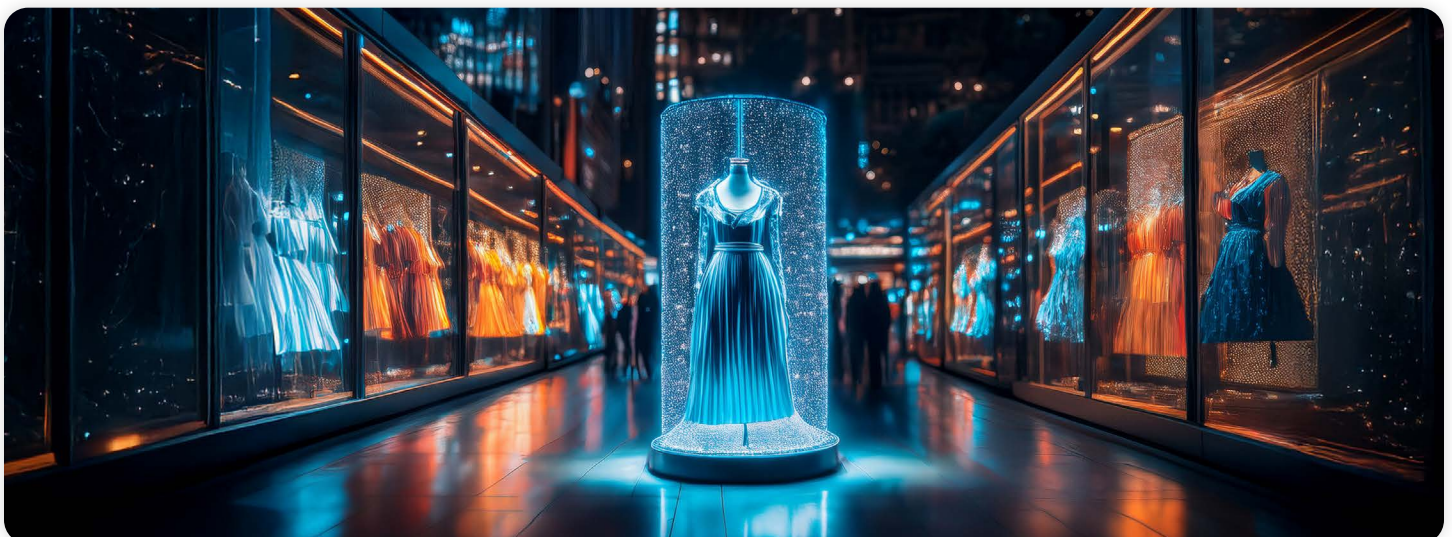
## All Your Apps, One Hub

AppCentral is your AI-powered hub for all your work. It unifies every mission-critical application you need and activates a fabric of embedded AI agents across your organization, eliminating the need for constant switching between applications.

- › **Enterprise Resource Planning** – Link orders, inventory, production, billing and finance in one place.
- › **Product Lifecycle Management** – Streamline concept-to-tech-pack and accelerate time-to-market.
- › **Shipping Automation** – Automate your fulfillment process, to ship faster, smarter and with fewer errors.
- › **Electronic Payments** – Get paid faster with automated invoices and a simple, secure payment portal.
- › **Invoice Automation** – Streamline your AP processes by leveraging AI to automate invoice, purchase order and receipt matching.

# Key Features

- › **Style Management** – A single record links every design detail, cost and sales figure so teams stay aligned and approve new garments faster.
- › **Season / Division / Color / Size** – Clear tags let planners view stock and sales at any level, spot slow movers early and place smarter reorders.
- › **Style Costing** – Live cost rollups flag margin problems while designs are still on the screen, giving merchandisers time to adjust fabrics, pricing or suppliers.
- › **Credit and Hold Management** – The system checks outstanding balances before release and can stop new shipments to late-pay customers, protecting cash flow without manual review.
- › **Electronic Data Interchange** – Retailer purchase orders, ship notices and invoices move straight between systems, trimming chargebacks and speeding payment.
- › **B2C eCommerce Integration with Shopify** – Automatic sync of products, prices, stock and orders keeps the site accurate and lets the warehouse ship the same day.
- › **B2B eCommerce Integrations with NuOrder and Joor** – Wholesale catalogs publish with live stock and confirmed orders flow back into the system, cutting out spreadsheets and back-and-forth emails.
- › **Stock Reservation** – Reserve fabrics and textiles across future plans and specific orders to align production schedules and meet customer commitments.
- › **Season Booking** – Confirm seasonal bulk contracts and auto-deplete quantities as in-season orders arrive to boost accuracy and on-time fulfillment.
- › **Demand-Driven Purchase Recommendations** – Generate buy suggestions from sales, forecasts and inventory positions to prevent stock-outs and excess.
- › **Business Intelligence** – Configurable industry dashboards connected across Aptean apps, for business-wide insights.
- › **Finance & Accounting by Microsoft Dynamics 365 Business Central** – Comprehensive AP/AR/GL with financial reporting and statements, cash management and bank reconciliation, multi-entity consolidations, multi-currency and much more for faster close and consistently accurate financials.







## Are You Ready to Learn More?

Want to learn more about Aptean  
Fashion & Apparel on AppCentral?

Contact Us at [info@aptean.com](mailto:info@aptean.com) or visit  
[www.aptean.com](http://www.aptean.com).



### About Aptean

Aptean is a global provider of industry-specific software that helps manufacturers and distributors effectively run and grow their businesses. Apteans solutions and services help businesses of all sizes to be Ready for What's Next, Now®. Apteans is headquartered in Alpharetta, Georgia and has offices in North America, Europe and Asia-Pacific.

To learn more about Apteans and the markets we serve, visit [www.aptean.com](http://www.aptean.com).

Aptean and Ready for What's Next, Now are Registered Trademarks of Apteans, Inc. All other company and product names may be trademarks of the respective companies with which they are associated.