

Investing to Better Serve the Food and Beverage Industry

aptean Ready for What's Next, Now™

At Aptean, our commitment to the food and beverage industry runs deep. We pride ourselves on our dedicated professionals' extensive experience, and the award-winning Aptean Food & Beverage ERP—built on the Microsoft Dynamics 365 Business Central platform, sporting robust AI capabilities and hosted in the world's most secure and stable cloud—is at the core of our offerings.



But we know that to truly serve the entirety of the global food and beverage market, we must incorporate specialised functionalities tailored to the unique challenges of all sub-verticals, across all regions. That's why we're continuously adding to our stable of solutions and innovating within our existing systems.

It's all to ensure that our customers, present and future, have the tools that they need to succeed in today's competitive environment. This summary of our investments in food and beverage technology demonstrates our dedication to help businesses like yours succeed.

By the Numbers

290 key developments in the past three years	75+ purpose-built modules	12 solutions available for integration with ERP
140+ food and beverage product specialists	900+ collective years of experience in the food and beverage industry	

Recent Timeline

2018-2019

Technologies Acquired

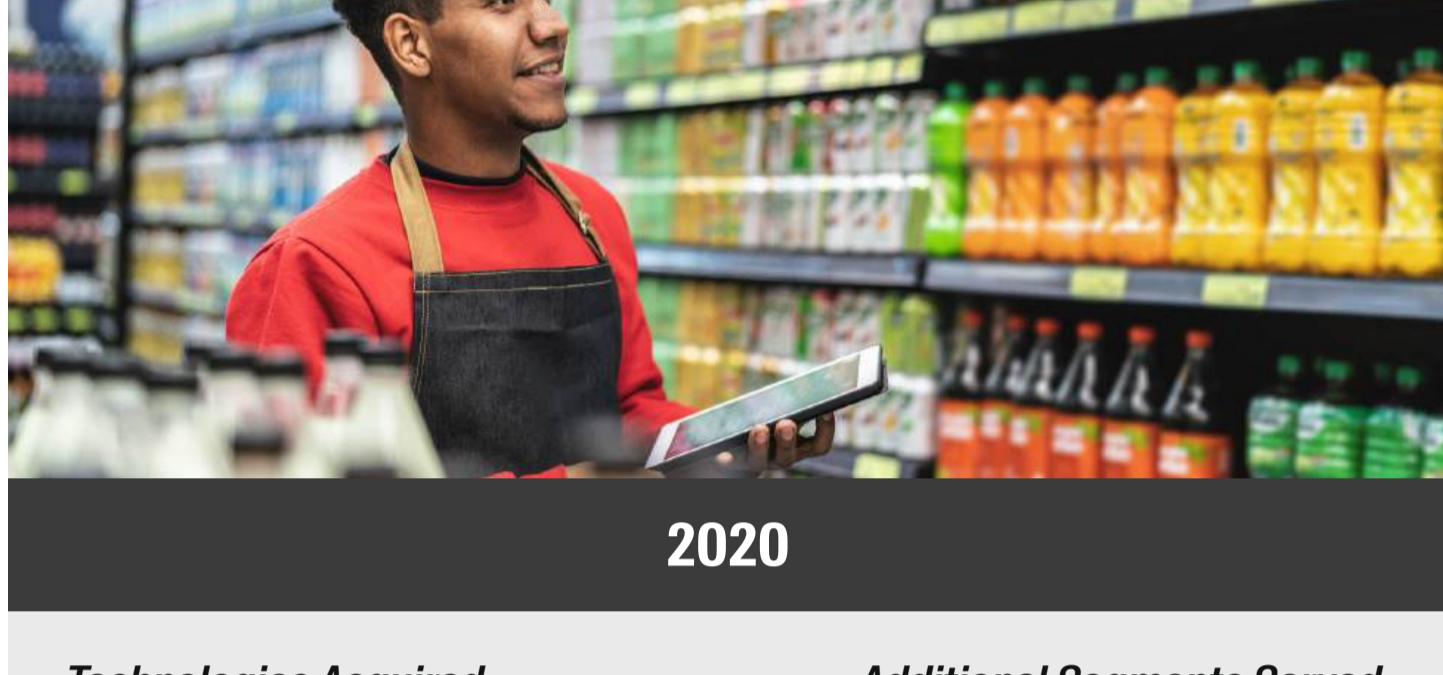
- » JustFood
- » bcFood
- » LinkFresh
- » Foodware

Segments Served

- » General food processing
- » General food manufacturing
- » General food distribution

Regions Served

- » North America
- » United Kingdom



2020

Technologies Acquired

- » ProcessPro
- » DIN
- » Agiles

Additional Segments Served

- » The Netherlands
- » Belgium
- » Germany



2021

Functionalities Added

- » Native electronic data interchange (EDI) integration
- » Native payment processing integration
- » Production planning for balancing supply and demand
- » Quality control for enforcing minimum standards
- » Non-conformance management for handling exceptions
- » Inspection statuses for quality control process visibility
- » Mobile warehouse functionality for handheld barcode scanning
- » License plating for tracking inventory with designated codes



2022

Technologies Acquired

- » Produce Pro

Additional Segments Served

- » Fresh produce and farming

Functionalities Added

- » Native transportation management system (TMS) integration
- » Split production for dividing orders into smaller quantities
- » Streamlined inventory management for quick overview
- » Forecasting for improved readiness to meet demand
- » Product specifications for capturing information and declarations
- » Compliance document management for digitising regulatory forms
- » Advanced pricing tools for implementing industry-specific scenarios



2023

Technologies Acquired

- » Drink-IT
- » Affinitus

Additional Segments Served

- » Beverage
- » Horticulture

Functionalities Added

- » Native electronic proof of delivery (ePOD) integration
- » Batch management for flexible sizing of production runs
- » Production tracking for calculating yield by product line
- » Catch weight for handling variable weights in protein and dairy
- » Weigh scale integration for automatically capturing measurements
- » Advanced check management for automatic printing and processing
- » Inventory worksheet for streamlined entry of received stock
- » Trade management for agreements and pricing varied by customer
- » Backorder management for handling backordered products
- » Call plans for assigning customers and calls to salespeople
- » Transport management for optimal staging and order allocation



2024 (Ongoing)

Functionalities Being Added

- » Contract management for handling vendor agreements and terms
- » Grower accounting for enhanced traceability and flexible pricing
- » Excise management for calculating taxes based on product movement
- » Empty goods and deposit management for tracking beverage containers



Our mission has always been to lead the way in the food and beverage software space. We never settle, and we don't think our customers should have to, either. By constantly iterating upon and improving our products, we aim to ensure that you're always equipped for tomorrow's challenges and can rise above the competition.



Learn more about Aptean Food & Beverage ERP and how it can help your business succeed in a dynamic market

[Contact Us](#)

[Request a Personalised Demo](#)