



AppCentral Fashion & Apparel Industry Hub

A Purpose-Built Solution Powered by Industry-Specific AI





“With Aptean Apparel ERP, now we have a platform that allows us to **move into the future** rather than being constrained by the past.”

-David Cropper, CIO, **Mamiye Brothers, Inc.**

Fashion and Apparel Applications With AI Woven In

Apparel brands and wholesalers face unique challenges—shifting consumer preferences, long supply chains and complex assortments of products to manage. Balancing the need to accelerate time-to-market while maintaining quality and profitability is a significant challenge. With decades of experience, Aptean understands these complexities and is committed to helping businesses solve these problems.

We do that by delivering a set of connected, apparel-specific applications tailored to the industry’s needs. With AI woven into every Aptean application, you can ask questions and get instant answers from your data, automate workflows across systems and deploy AI agents designed for fashion and apparel processes. The result: faster time-to-market, streamlined operations and profitable growth.

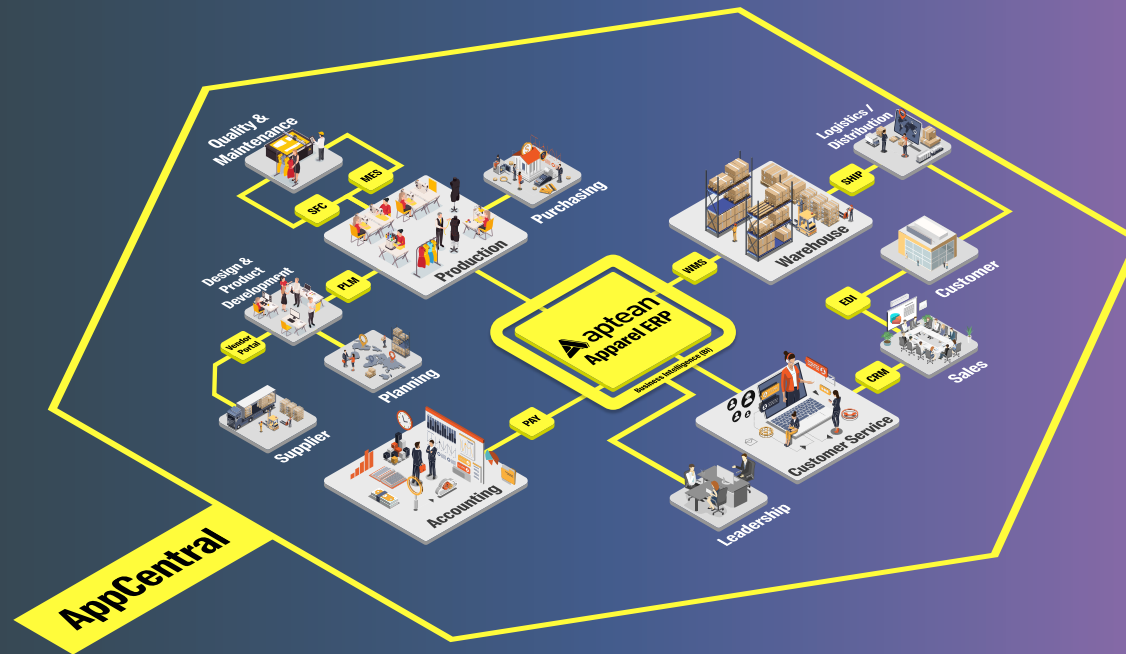


**Purpose-Built
Solution for
Fashion and
Apparel**

**Increase
Efficiency with a
Unified Platform
of Connected
Apps**

**Accelerate
Operations
with AI Agents
and Automated
Workflows**

**Succeed with
Support from
Industry Experts**



AppCentral for Fashion & Apparel

AppCentral Fashion & Apparel Industry Hub connects design, sourcing, production and fulfilment in a unified, cloud-based platform with AI at its core that's easy to expand as your business grows. Eliminate the gaps between systems, gain a single source of truth for every style and SKU and move from reactive problem-solving to proactive strategic decision-making.

With Aptean Intelligence, you can forecast with confidence and make data-driven decisions that drive your brand forward. What's more, purpose-built agents can automate routine tasks so you can focus more on creativity, growth and possibilities.

AppCentral Platform Features

- » A set of connected applications to support apparel businesses from design to fulfillment
- » Style-based system to simplify the management of products and their variants
- » Embedded AI that acts across Aptean apps to quickly surface insights and automate tasks across the business
- » AI agents designed specifically for fashion and apparel processes and workflows
- » Centralized management of users, subscriptions and integrations



Style Card
ST0001

Create or Update Items | Create and Update GTN | Pictures | Adjust Style Inventory | Costing | Automate | Fewer options

General

Code: ST0001 | Division Code: WOMEN | Blocked: ☐ | Primary Vendor No.: V0016
 Description: Dress Sleeveless Maxi | Division Name: Women | Primary Vendor Name: Multihaus Trading GmbH
 Item Template Code: 1000 | Season Code: S25 | Primary Vendor Country: DE
 Item Category Code: DRESS | Season Name: Spring Summer 2026 | Status: Draft
 Base Unit of Measure: PCS

Costs & Posting

Cost Details

Purchase Price Code: J00002 | Sales Price Code: J00001 | Costing Method: FIFO
 Standard Cost: 0.00 | Unit Cost: 40.00 | Unit Price: 85.00 | Retail Price: 169.95 | Landed Estimated Cost: 0.00

Posting Details

Gen. Prod. Posting Group: RETAIL | VAT Prod. Posting Group: FULL NORM | Inventory Posting Group: RESALE

Colors

New Line | Delete Line | Load Default Colors | Costing | Pictures

Color Code	Color Description	Standard Cost	Unit Cost	Unit Price	Retail Price	Landed Estimated Cost	Blocked	Purchased	Sales
FLORAL	Floral print	0.00	42.00	88.00	175.00	0.00	<input type="checkbox"/>	<input type="checkbox"/>	<input type="checkbox"/>
RED	Red	0.00	40.00	85.00	169.95	0.00	<input type="checkbox"/>	<input type="checkbox"/>	<input type="checkbox"/>

Pictures

Previous | Color Filter | Description | Color Code | Picture Count

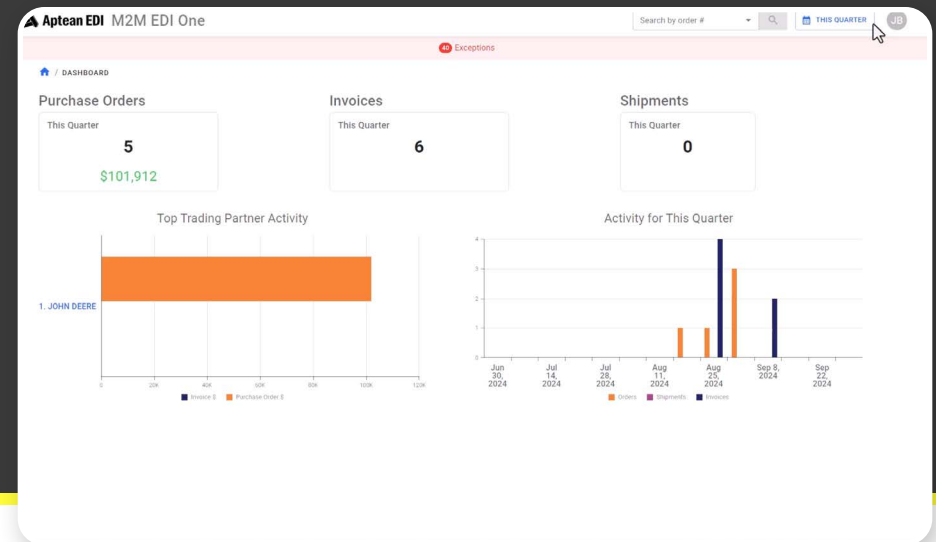
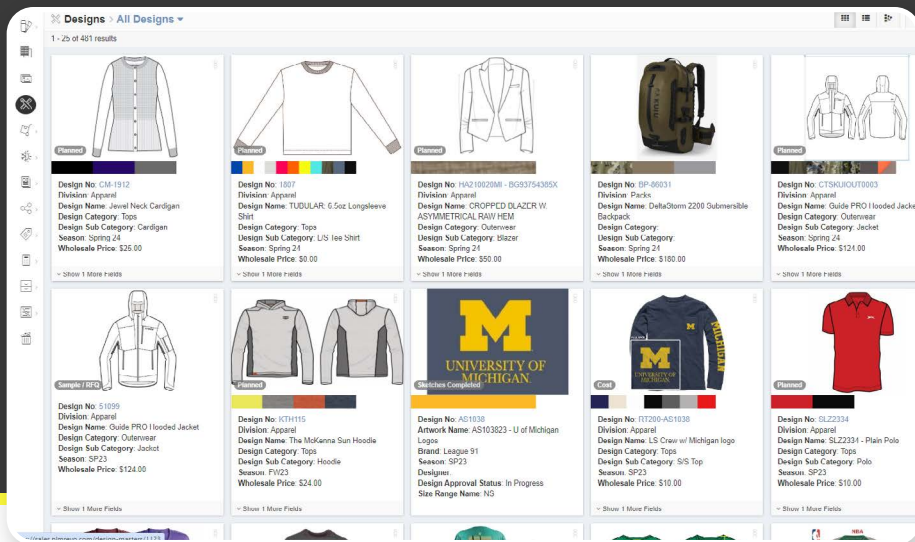
Aptean Fashion & Apparel

Our ERP is built for fashion workflows, style focused and season aware. Manage colors, sizes and dimensions with a flexible style master, and guide items from pre-season planning to in-season allocation and end-of-season markdowns. Built on Microsoft Dynamics 365 Business Central for robust, trusted financials and accounting, Aptean adds fashion-specific capabilities so brands move faster and scale with confidence.

AppCentral is our AI platform that connects your apps and adds intelligence. Ask natural-language questions of your data for instant answers, orchestrate cross-app workflows and deploy AI agents for specialized processes. You also get a set of connected applications with AppCentral, including PLM, EDI, shipping automation, invoice automation and a payment portal, giving you end-to-end control from concept to production to your customers' hands.

Features and Functionalities

- » Efficiently manage product variations (size, color, dimensions and more) with a **style-based ERP**
- » Optimize margins and stock distribution with **smart allocations**
- » Manage the full season from **pre-season bookings, in-season tracking** through to **end-of-season sales**
- » Streamline **financials and accounting** with Microsoft Dynamics 365 Business Central
- » Connect with popular industry solutions and platforms like **Shopify** and **3PLs**



Aptean Apparel PLM

Aptean Apparel PLM empowers you to accelerate time-to-market and simplify product development by streamlining essential processes like tech pack creation, design asset management, sampling and RFQs—all within an intuitive, browser-based platform. With real-time collaboration, flexible workflows and seamless integration with popular design tools, your team can perfect and launch new products faster.

Features and Functionalities

- » Establish a single source of truth for design assets
- » Automate tech pack management
- » Use embedded collaboration tools

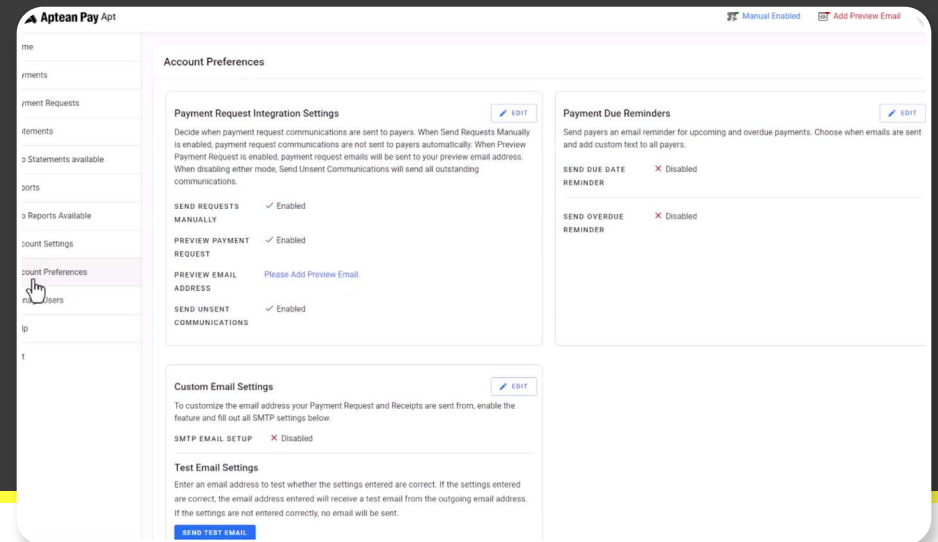
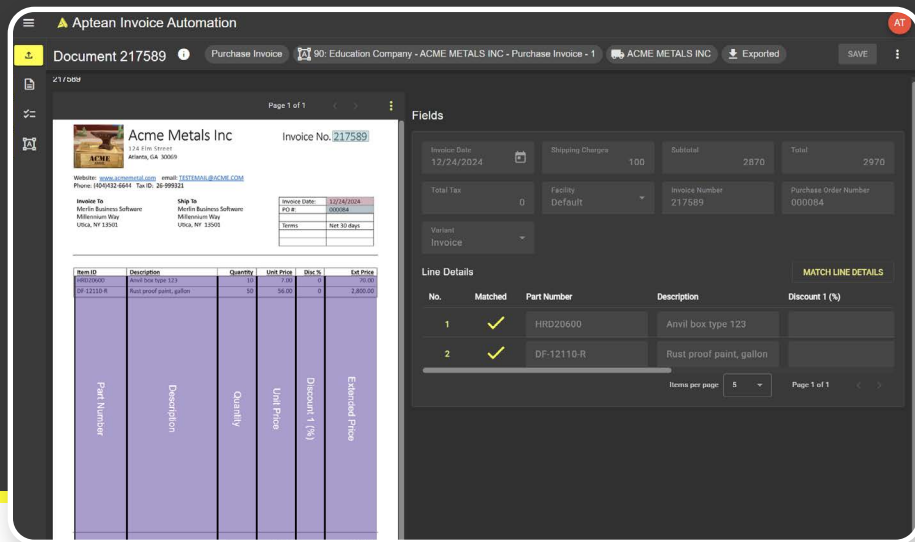
Electronic Data Interchange

Aptean EDI automates the exchange of critical documents between fashion and apparel businesses with their most important customers. It eliminates manual processing and ensures accurate, real-time data exchange.

Pre-connected to your Aptean apps, our EDI app improves collaboration, speeds up transactions and ensures compliance with customer standards. This solution allows your company to streamline order processing, invoicing and fulfillment, ensuring seamless, reliable operations that align with industry demands.

Features and Functionalities

- » Seamlessly exchange orders, invoices and key documents with automated exchange
- » Ensure up-to-date information is shared across partners through real-time synchronization
- » Meet regulatory and trading partner standards with compliance management tools



AP Invoice Automation

Aptean AP Invoice Automation enhances financial control by streamlining invoice processing and improving operational efficiency. Seamlessly integrated with other AppCentral apps, our cloud-native solution leverages AI-powered data extraction, automated approval workflows and direct ERP connectivity to eliminate manual entry and reduce errors.

With real-time visibility and automated three-way purchase order matching, you can accelerate invoice approvals, ensure compliance and boost accuracy—all within a user-friendly digital experience. This robust app empowers businesses to drive smarter, faster financial operations.

Features and Functionalities

- » Extract and validate invoice data with AI-driven processing to reduce manual entry errors
- » Ensure accurate invoice-to-PO-to-receipt verification with automated three-way matching
- » Configure approval workflows for automated routing based on invoice amounts and business rules, including push notifications

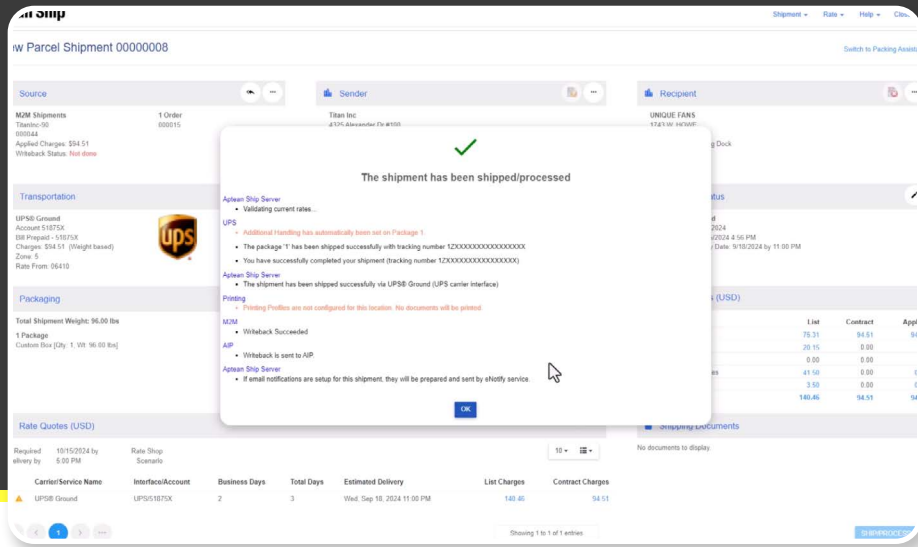
Pay

Aptean Pay enhances financial agility by streamlining payment processing and optimizing cash flow management. Seamlessly integrated with other AppCentral apps, our solution enables your business to securely accept digital payments and ACH/eCheck while ensuring compliance.

With near-real-time transaction capture, you can accelerate accounts receivable reconciliation, automate invoicing and improve payment efficiency through a user-friendly digital portal. This robust app enables sustainable financial success for manufacturers.

Features and Functionalities

- » Streamline accounts receivable and improve cash flow with real-time payments
- » Utilize ACH and credit card payment options to automate invoicing
- » Accept credit, debit and ACH/eCheck payments via secure integrations



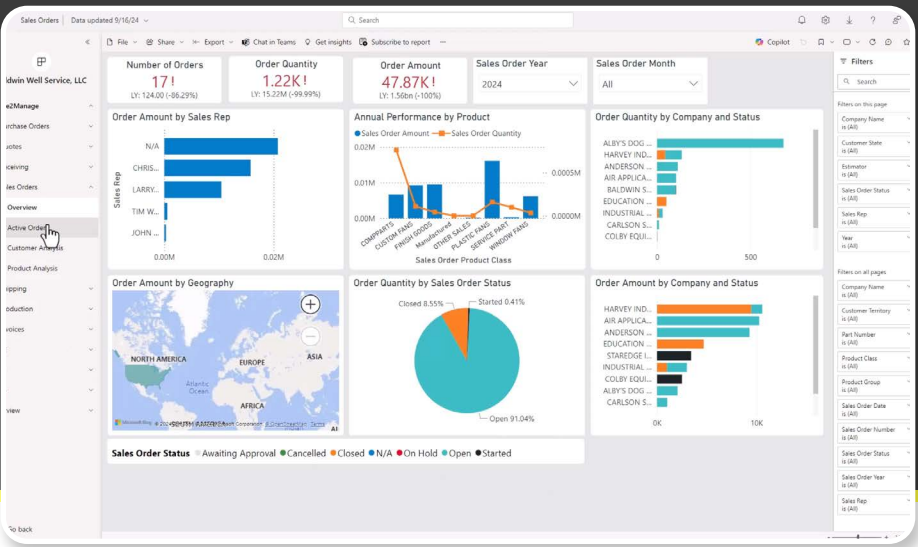
Shipping

Aptean’s shipping solution simplifies and automates the entire shipping process by integrating with multiple carriers and offering real-time tracking. Pre-connected with other apps, it provides seamless coordination for streamlined operations.

Your business can reduce shipping errors, improve on-time deliveries and enhance customer experience through customizable shipping communications. By automating logistics tasks, our app ensures efficiency while optimizing costs through automated rate comparisons.

Features and Functionalities

- » Automate shipping processes across multiple carriers
- » Ensure on-time deliveries and optimize stock levels
- » Automatically generate accurate shipping documents



Business Intelligence

Aptean BI consolidates and analyzes data from across your organization, integrating seamlessly with other applications to provide comprehensive, AI-enabled insights in real time. With pre-built analytics and customizable dashboards, you can make data-driven decisions that optimize processes and enhance profitability.

Our BI app offers end-to-end visibility into production performance, resource allocation and overall operational health, enabling better strategic planning and informed decision-making for long-term success.

Features and Functionalities

- » Consolidate data from all applications for visibility
- » Access dashboards tailored for manufacturing needs
- » Create dashboards for specific business goals

Aptean Intelligence for Fashion & Apparel

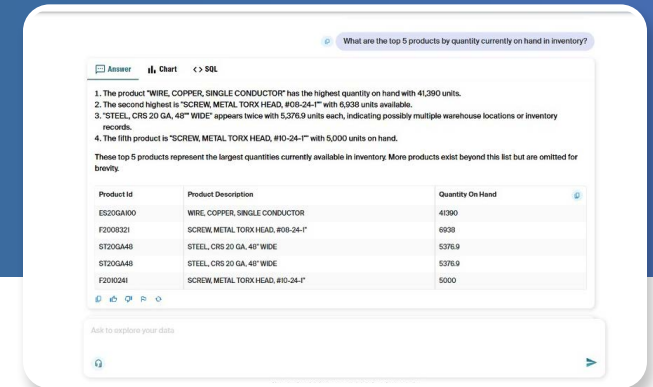
AI That Understands Your Business. And Powers It.

Aptean Intelligence embeds AI directly into your applications, workflows and workspaces, turning everyday work into intelligent action.

Ask natural-language questions about your data, develop agents without coding, automate workflows and access executive-ready insights, so your teams move faster, protect margins and deliver better customer outcomes without waiting on reports or custom development.

Key Benefits

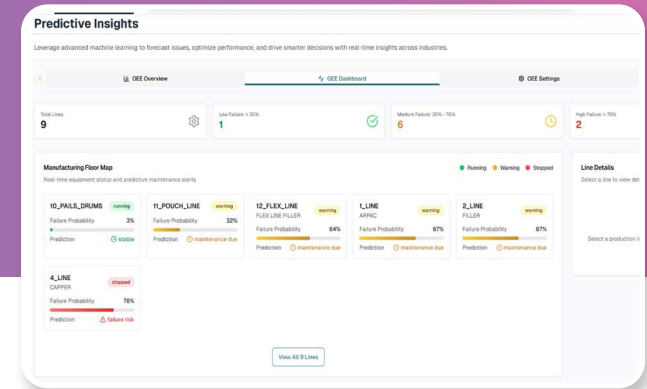
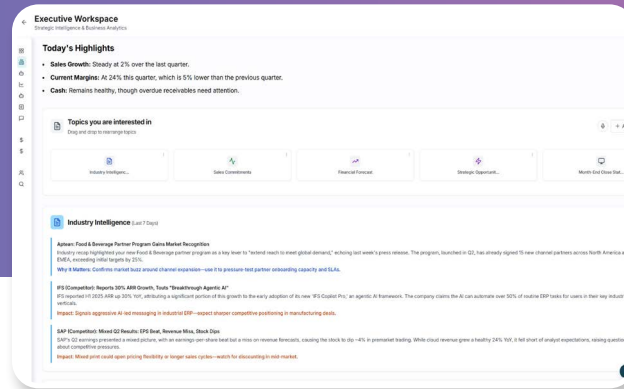
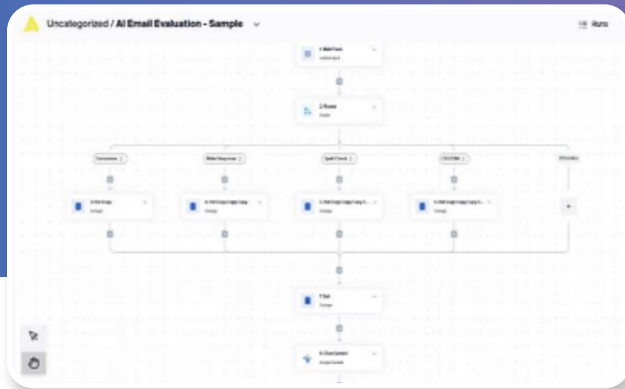
- » Replace static decks and spreadsheets with real-time answers and digests, helping you go from data to decisions more quickly
- » Automate with event-driven workflows to eliminate manual handoffs across your systems
- » Use prebuilt agents and workflows that reflect manufacturing and distribution realities so you see impact faster



GenAI Query

Ask questions in plain language and get real-time answers and charts; no BI queue, no spreadsheets. This feature gives every role a faster path from data to decision, reducing reporting delays and revealing issues before they grow.

- » Ask questions to get natural-language answers with visualizations
- » Pin favorites for a live personal pulse
- » Speak to chat/voice assistant with one-click share/export



Intelligent Workflows

Enable no/low-code event-driven automation that listens for business signals and orchestrates cross-system actions in real time. Replace firefighting with automated workflows and human-in-the-loop approvals that cut manual effort and protect margin.

- » Deploy real-time event triggers across systems (350+ connectors)
- » Set up AI-driven steps with human-in-the-loop approvals
- » Leverage reusable templates with full audit trails

Role-Based Workspace

Enable all staff with AI-first, role-based workspaces that offer daily digests, natural-language Q&A and instant drilldowns. Get a live pulse of your business and one-tap delegation to move decisions forward—anytime, anywhere.

- » Distribute AI-driven daily digests by role and topic
- » Find answers via natural-language Q&A with instant drill-downs
- » Stay agile with one-tap delegation and mobile/voice access

Predictive Intelligence

Get ahead of issues before they happen. Predictive Intelligence uses machine learning to detect risks, forecast downtime and recommend proactive actions, so your teams can plan, not react.

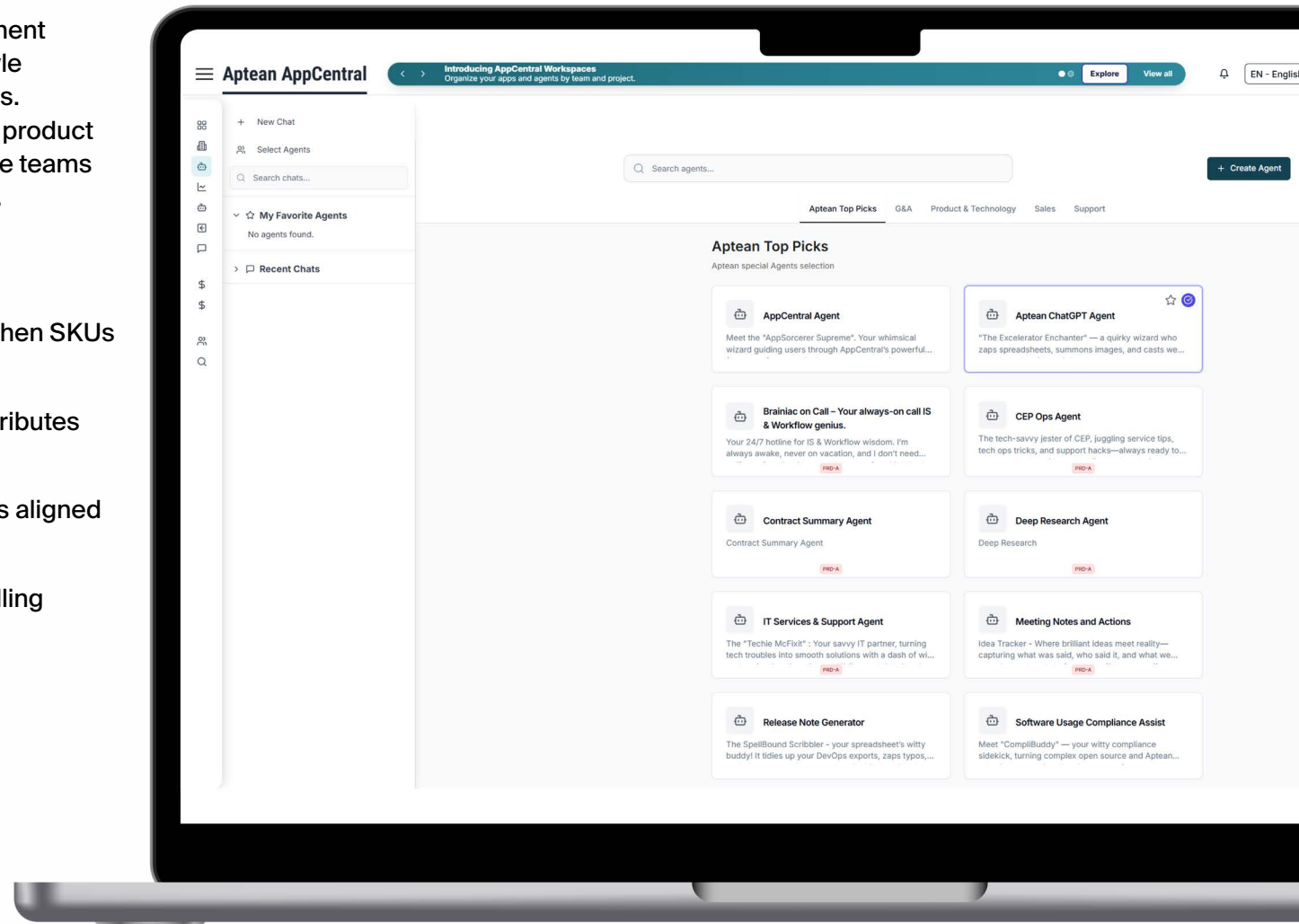
- » Analyze live and historical data to predict unplanned events and performance trends
- » Implement real-time alerts and probability scoring to flag issues early
- » Drive continuous improvement of self-learning models through user feedback

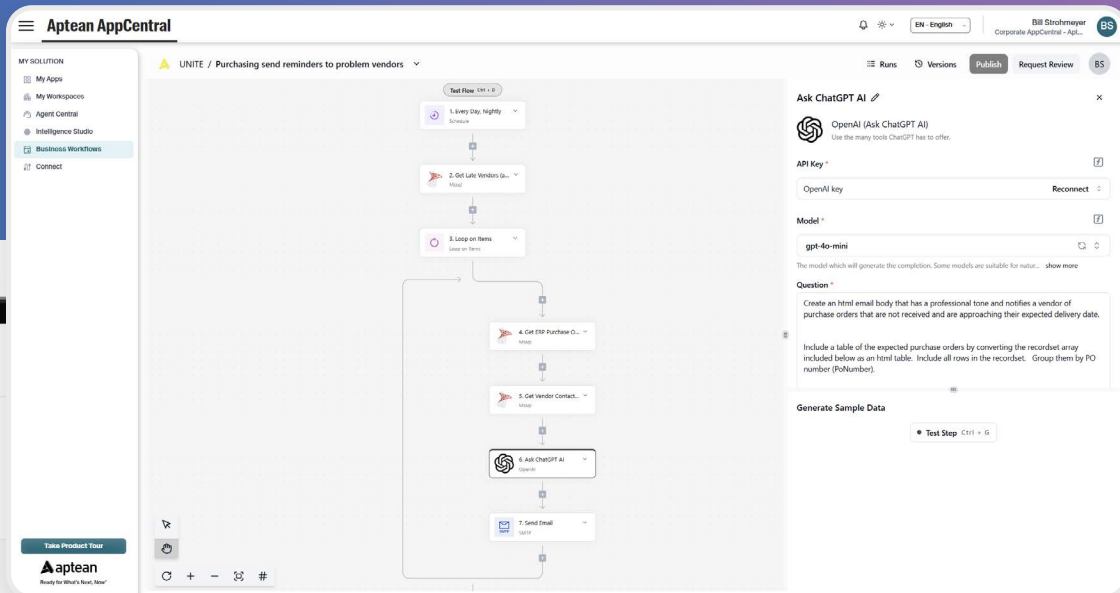
AI Agents That Automate Product Data, Style Substitutions and Merchandising Content.

Aptean AI Agents simplify product management by automating tagging, substitutions and style descriptions across collections and channels. They eliminate repetitive catalog work, keep product data consistent and ensure sales and service teams always have accurate, ready-to-use content.

Use Cases

- » Suggest substitute styles automatically when SKUs go out of stock
- » Generate consistent product tags and attributes across systems and marketplaces
- » Create AI-generated product descriptions aligned with brand voice and regional standards
- » Surface insights like “Which styles are selling fastest?” using conversational search





**AI Agents deliver faster launches,
cleaner product data and higher
merchandising productivity from
design to sale.**

Key Benefits

- » **Product Continuity:** Keep assortments live with automated substitutions
- » **Operational Efficiency:** Eliminate manual tagging and rework across channels
- » **Content Consistency:** Ensure every style description matches brand tone and data rules
- » **Insight on Demand:** Enable instant answers for merchandisers and planners
- » **Built for Apparel:** Embed fashion-specific data models and workflows to reduce errors and time-to-market

Trusted and Proven

Accelerate growth with Aptean's cloud-based solutions tailored for fashion and apparel brands, wholesalers and manufacturers. Backed by a dedicated team of industry experts, we empower your apparel business with the tools to streamline product development, automate business processes and optimize manufacturing operations for lasting success.



10,000+

Customers
Across the Globe

50+

Specialized
Software Solutions

80+

Available in
Over 80 Countries

4,000+

Talented
Employees



“I really felt like they were **invested in the success of the implementation...**I think that was instrumental in making the rest of the johnnie-O team feel invested and that **we were being taken care of...**”

-Derek Karnatz, Director of Operations, **johnnie-O**

[Read Their Success Story >>](#)



“Aptean is a **true partner**, always looking for ways to help us **improve and enhance** our business. As we have grown, Aptean Apparel ERP and Aptean Shop Floor Control have grown with us.”

-Carrie Bovender, CEO, **Grand Forest Inc.**

[Read Their Success Story >>](#)



Take the Next Step Today

Purpose-Built Solutions Supported by Industry Experts

Request Pricing >>

Request Your Demo >>



Aptean is a global provider of industry-specific software that helps manufacturers and distributors effectively run and grow their businesses. Aptean's solutions and services help businesses of all sizes to be Ready for What's Next, Now®. Aptean is headquartered in Alpharetta, Georgia and has offices in North America, Europe and Asia-Pacific.

To learn more about Aptean and the markets we serve, visit **www.aptean.com**.

Aptean and Ready for What's Next, Now are Registered Trademarks of Aptean, Inc. All other company and product names may be trademarks of the respective companies with which they are associated.