



Compiere 3.2 Installation Instructions Windows System - Oracle Database

Compiere Learning Services Division

Table of Contents

Compiere ERP & CRM Installation Instructions – Windows System Oracle Database

<u>Compiere ERP & CRM - Installation Instructions – Oracle</u>	3
Prerequisites	3
Database Installation	3
<u>Compiere 3.2 New Installation Instructions</u>	7
Java Installation	7
Download Compiere	7
Complete Server Setup	14
Start Compiere	15

Compiere ERP & CRM - Installation Instructions – Oracle

Prerequisites

- Database approved Windows Operating System: Windows 2003 or Windows XP
- Disk Space: > 5 GB (includes database)
- Recommended: Hardware RAID 10
- Memory: > 512 MB - Recommended: > 1 GB
- TCP/IP connection to Clients

Note: It will ease the installation tremendously, if you have your network set up with **DNS** server and a domain (actually a must for non-Windows environments). Check with your system administrator - do NOT use IP addresses, but names!

Database Installation

1. Install Database



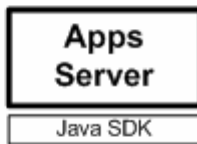
2. Install Java



Java SDK

3. Download Compiere

unzip / tar



4. Setup Compiere

RUN_setup



5. Complete Server Setup

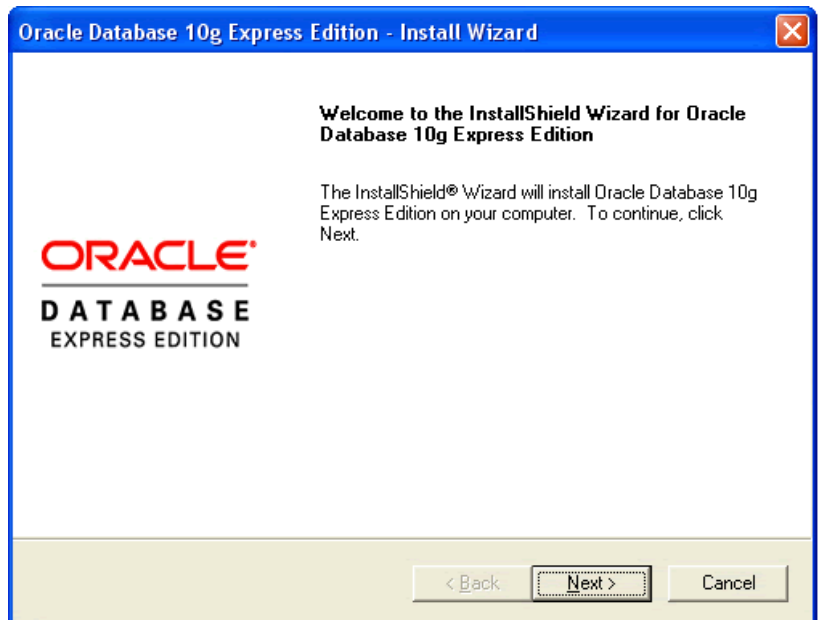
RUN_Server2



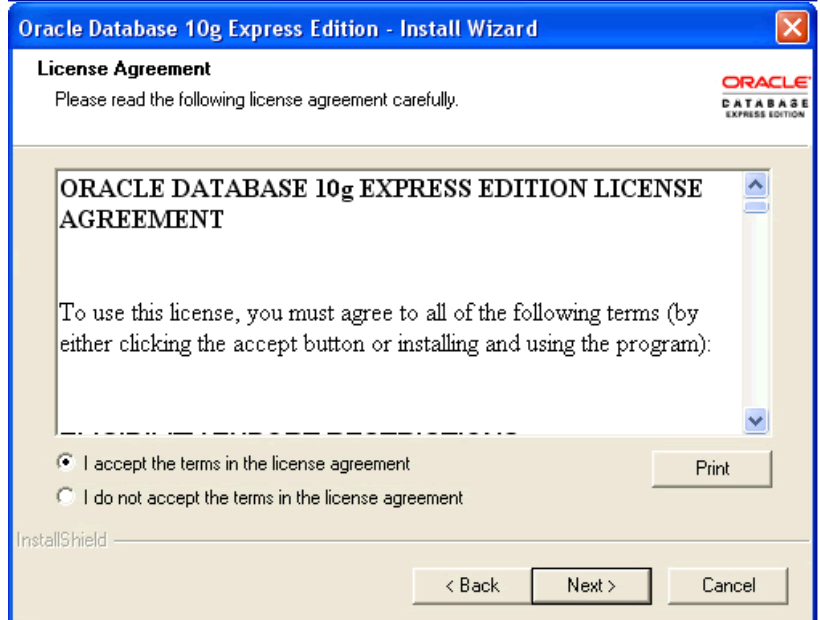
1. Install Database – this document will use Oracle XE. While Oracle XE is free to use without any license fee, it is your responsibility to ensure you have the appropriate version and licenses. For any other Oracle Edition (Standard One, Standard, Enterprise) please see the appropriate Oracle documentation.

- 1) Get the Oracle XE, Oracle 10g R2, or Oracle 11g installation CDs or download the images from the Oracle Site.
(<http://www.oracle.com/technology/software/products/database/x/e/index.html>)
- 2) Make sure you are logged in as the Administrator or someone in the Administrators group.
- 3) Download the executable file appropriate for your OS (or select the executable file on the CD)

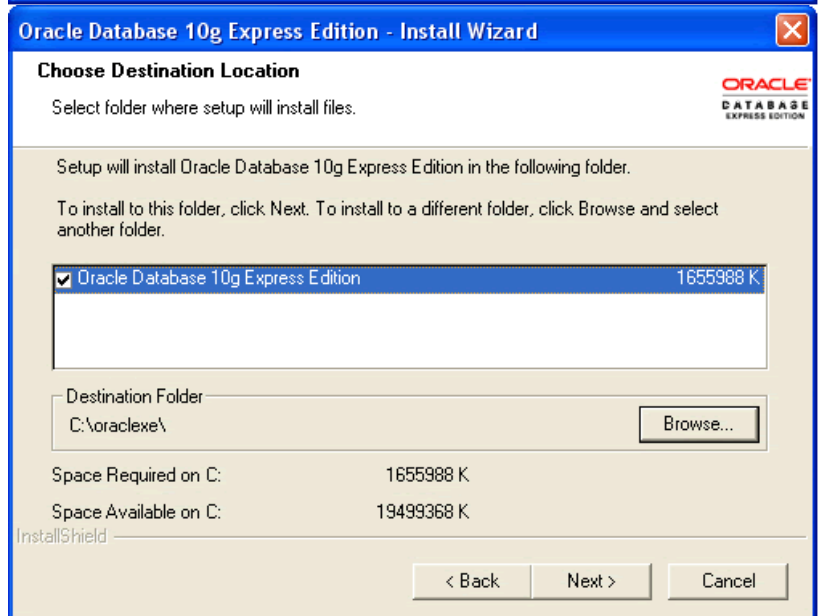
- 4) The welcome page displays.
- 5) Select the Next button to continue with the Installation.



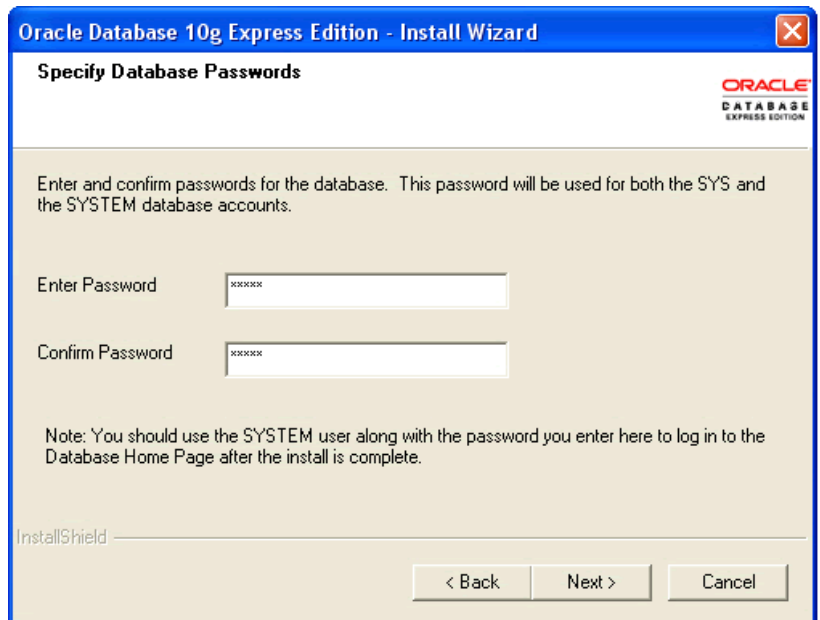
- 6) Review the License agreement and select the Next button.



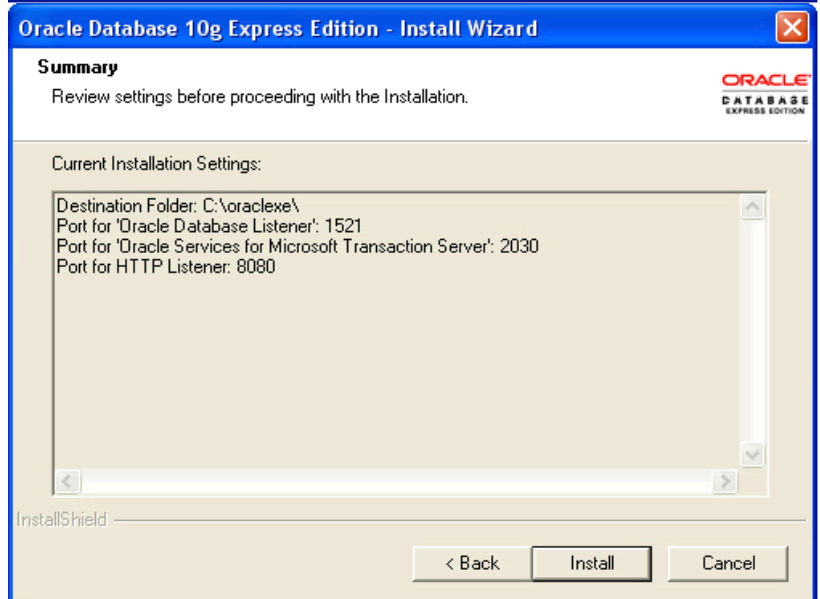
- 7) Select a Destination folder by selecting the Browse button.
- 8) Select the Next button to continue.



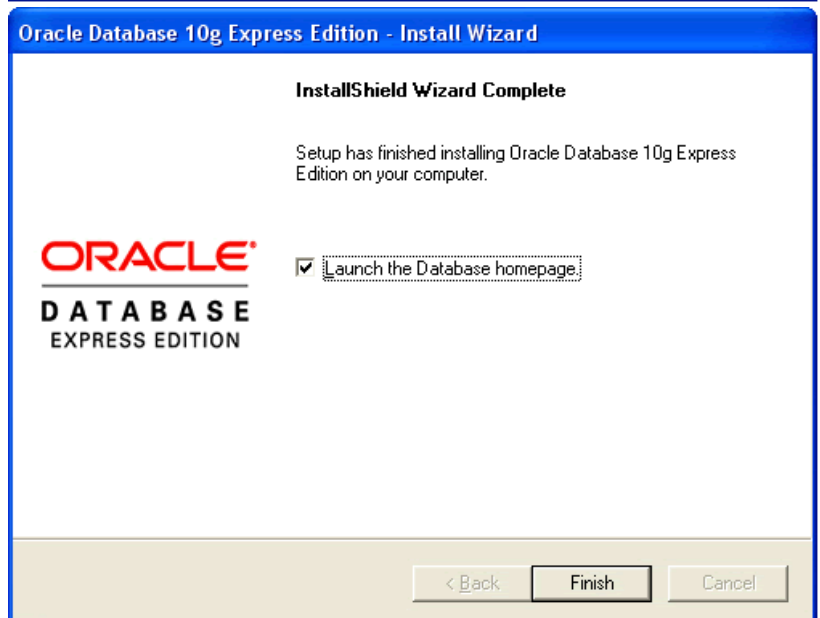
- 9) Enter and confirm a password for the database. This information will be necessary for a later step.
- 10) Select the Next button to continue.



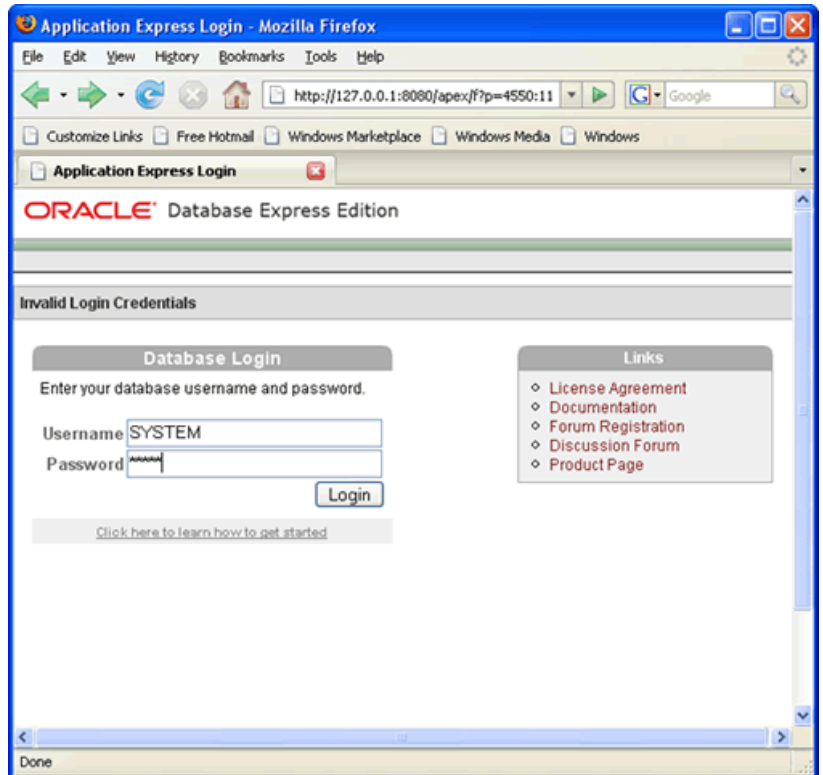
- 11) Review the Installation Settings. Select the Back button to make changes if necessary.
- 12) If the Installation settings are correct, select the Install button to start the Installation.



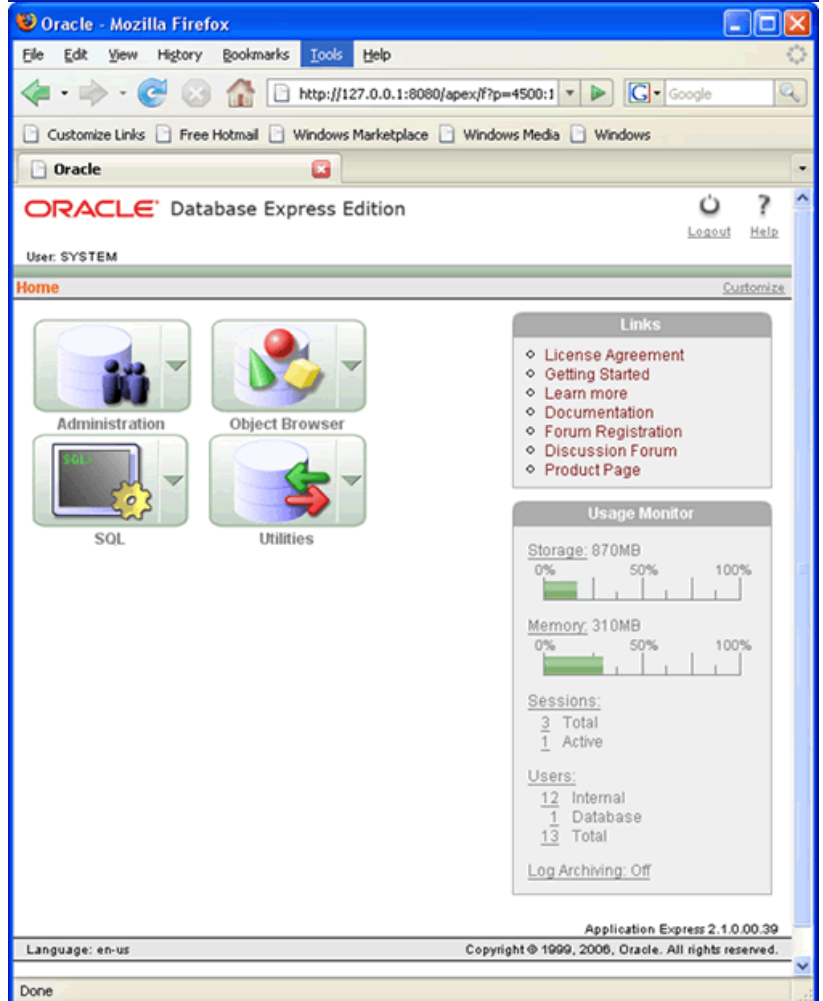
- 13) When the Installation is complete, the following confirmation window will display:
- 14) Select the "Launch the Database homepage" option.
- 15) Then select the Finish button to complete the Installation.



16) Enter a Username of SYSTEM and the Password entered in step 8.



17) The database Home Page is loaded.
Note: This confirms the Database Installation.



Compiere 3.2 New Installation Instructions

Java Installation

1. Download and install [Sun Java JDK 6](#) (SDK), update 5 or higher.
Important: The Compiere Server requires the JDK (not just JRE).

Download Compiere

2. Install /Setup Compiere Server (this includes the Client as well)
 - 1) Download the current version of Compiere: [Download Compiere](#). (3.2 or higher)
 - 2) Extract the .zip file. The steps shown assume that you extract to the root directory, resulting in a COMPIERE_HOME of C:\Compiere2 in Windows.
 - 3) Verify that the bin directory for your database executables is included in the PATH. Also, if using Oracle XE on Linux, run \$ORACLE_HOME/bin/oracle_env.sh
 - 4) Execute the script \$COMPIERE_HOME/RUN_Setup.
Note: if the following window does not display, please ensure that the following are updated.
 - Add the folder where you have installed JKD 165 at the beginning of the **PATH** system environment variable.
 - Set the **JAVA_HOME** system variable to the location of your java installation (i.e., 'C:\Program Files\Java\jdk1.6.0_5')
 - Set the **COMPIERE_HOME** system variable to the path of your Compiere installation (i.e., 'C:\Compiere2')
 - 5) Select Database Type Oracle XE, Oracle (for Standard or Enterprise Editions) or PostgreSQL (for EnterpriseDB).
 - 6) For System Password, enter the System database User password.
 - 7) For Database Password, enter the database user password, (i.e. 'compiere')
 - 8) For Server Names, i.e., (Application, Database and Mail) use the DNS name of the server. **Hint:** Do not use localhost (127.0.0.1) or IP address.

The screenshot shows the 'Compiere Server Setup - Release 3.2.0_Beta' window. It has a menu bar with 'File' and 'Help'. The configuration is as follows:

Java Home	C:\Program Files\Java\jdk1.6.0_5	Java VM	sun
Compiere Home	c:\compiere2	KeyStore Password	*****
Application Server	lap-js-new	Server Type	jboss
Deployment	c:\compiere2\jboss\server\conf	JNP Port	1099
Web Port	80	SSL	443
Database Server	lap-js-new	Database Type	oracleXE
Database Name	xe	Database Search	xe
Database Port	1521	System Password	*****
Database User	compiere	Database Password	*****
Mail Server	lap-js-new	Admin Email	info@lap-js-new
Mail User	info	Mail Password	

At the bottom, there are three buttons: 'Test' (with a wrench icon), a help button (with a question mark icon), and 'Save' (with a floppy disk icon).

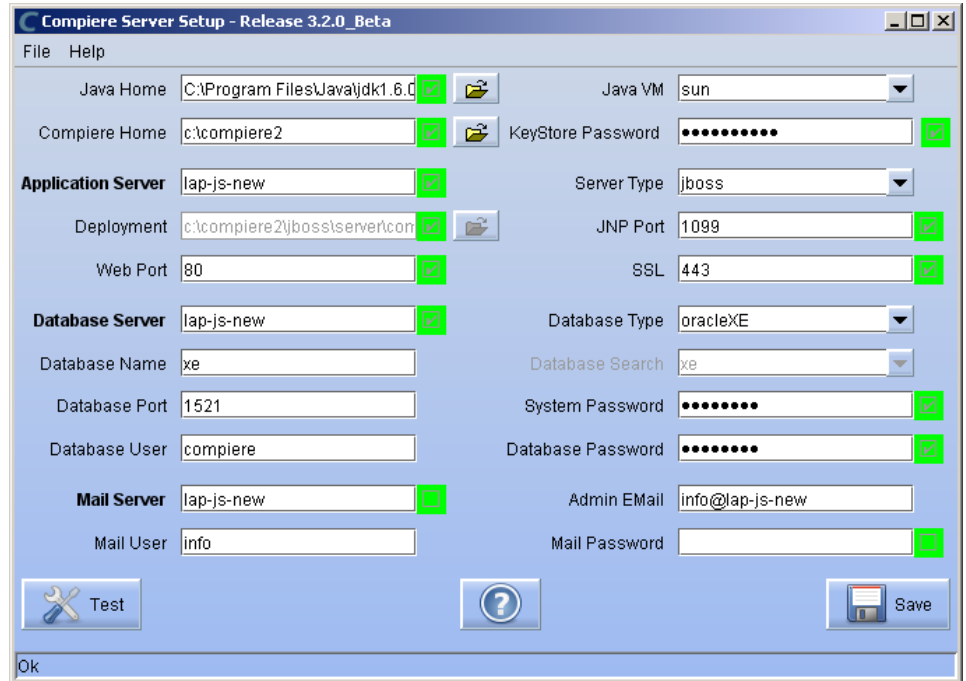
9) Enter or update any other parameters as necessary.

10) Select the Help button, for information on any field.

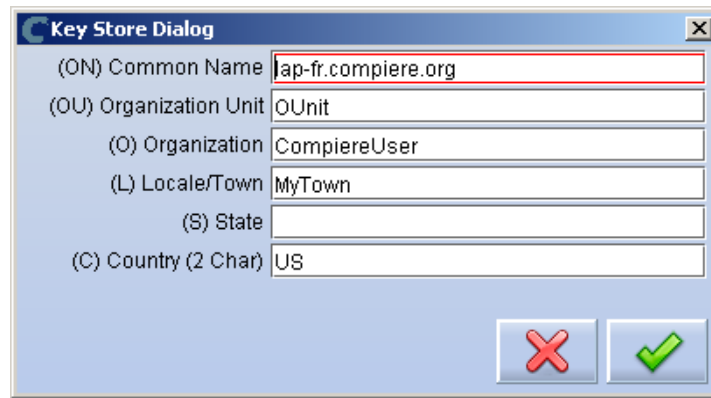
11) Select the Test button to check the parameters.
Note: The parameters will only save after they have been verified.

12) If an entry is unverifiable, it will display with a red X. Correct the entry and re-select Test/Save.

13) Once all fields are verified, click the Save button to proceed.

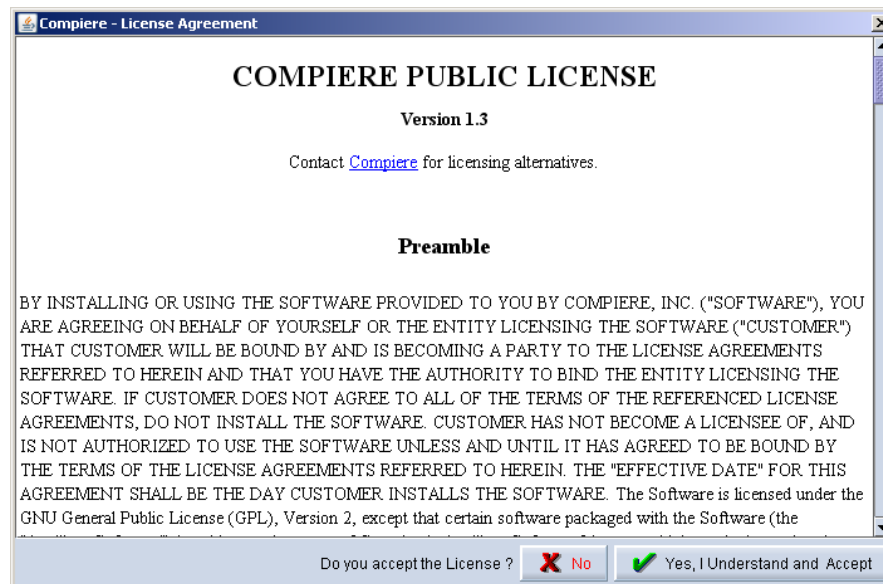


14) At the prompt enter your company information as appropriate and verify that the common name is the address of your application server. Once all fields are complete, click ok to continue.



15) Next, read and accept the license agreement.

Hint: You might get more than one license agreement, depending on the components that you are installing.



16) A default security key will be generated

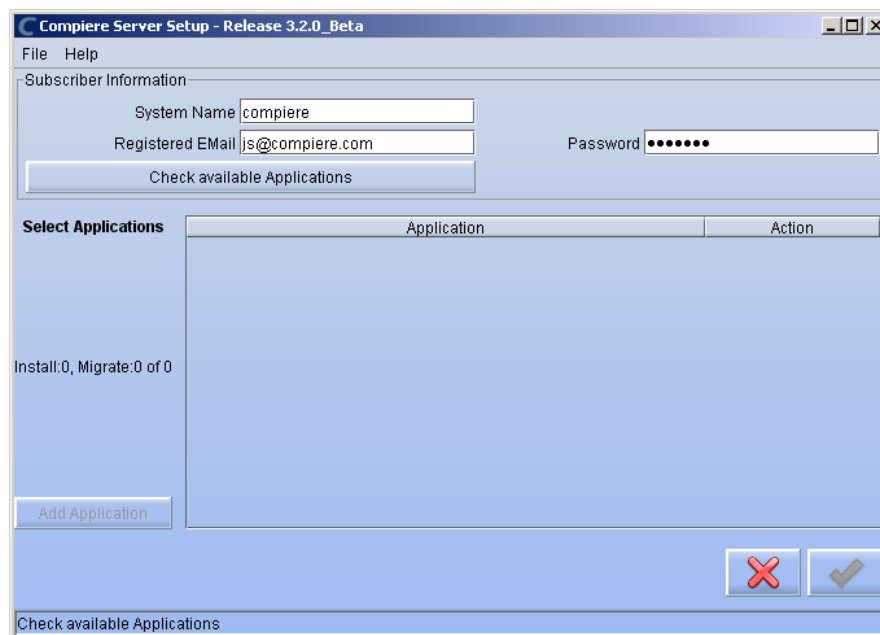


17) After accepting the Security Key creation, the Compiere Server Setup window will display.

18) Provide the Subscriber Information. Current customers should provide the subscriber information (**System Name, Email and Password**) exactly as it was registered in the Compiere Web Store to get a complete list of applications.

Click Check Available Applications to get a list of applications that are available to be installed.

Tip: Community Edition users may leave the fields blank and click “Check available components” to install the Community Edition.

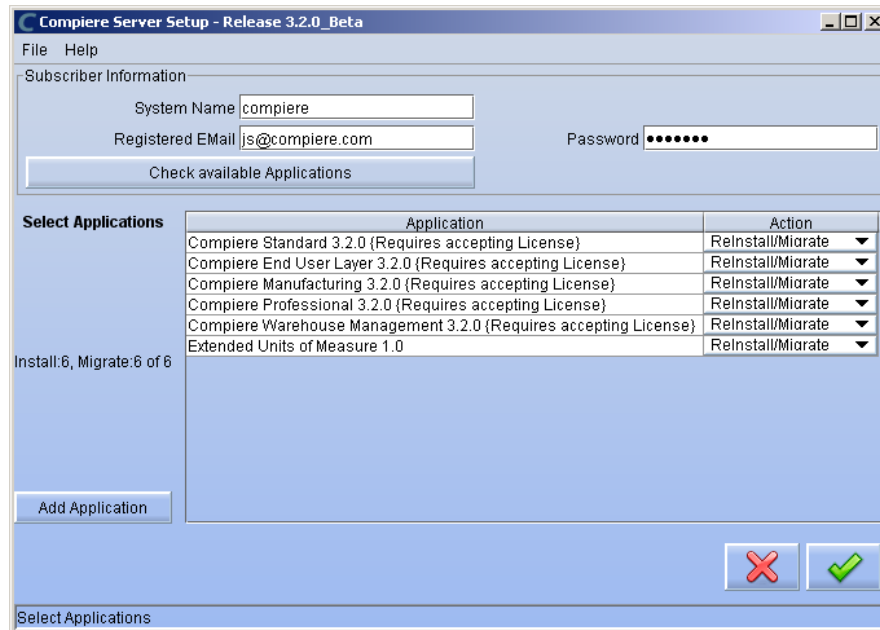


19) Click Check Available Applications to get a list of applications that are available to be installed.

- 20) Select the applications that you would like to install. You can include additional applications by using the button Add Application.

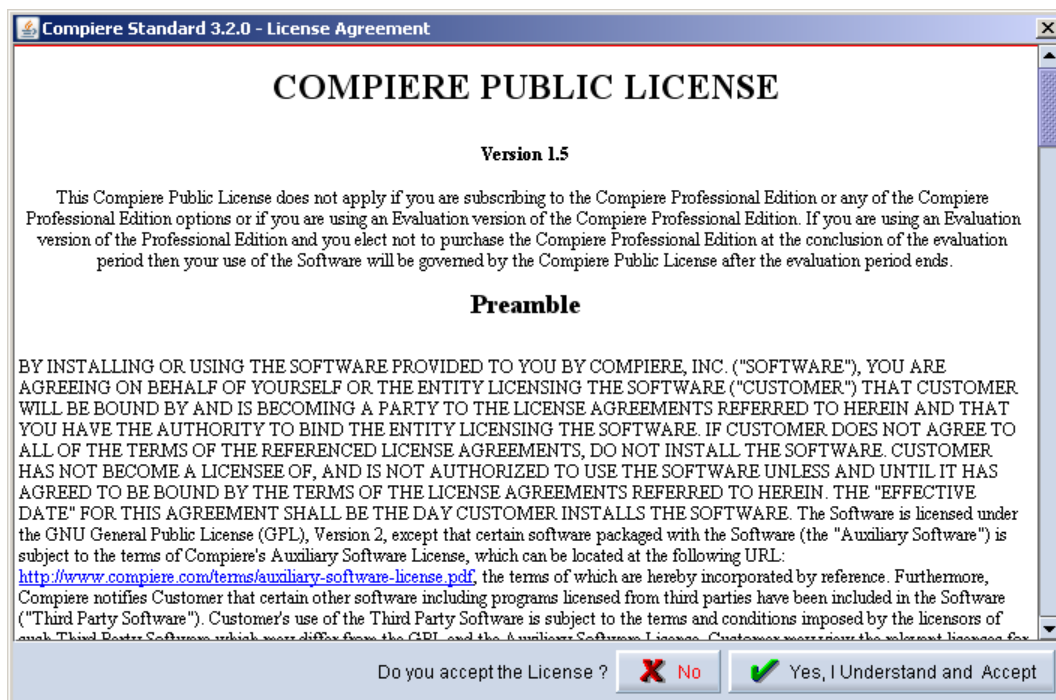
By default all available applications will be installed. If you do not wish to install one of them you should change the action field from "New Install" to "-None-". Notice that Compiere Core is a *Mandatory Prerequisite* and must be selected.

Select the OK button to continue.



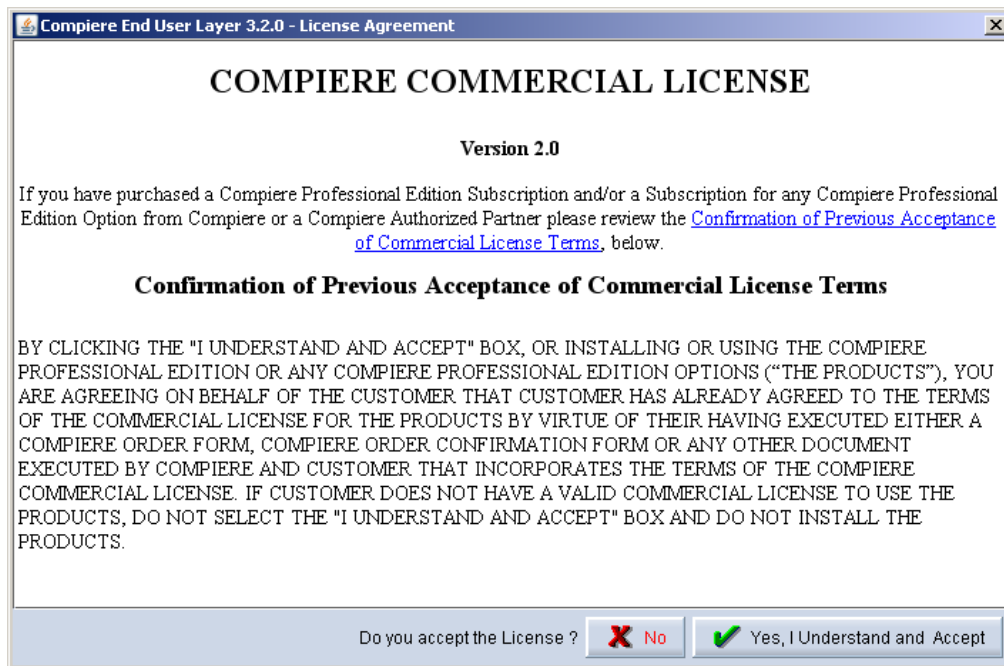
- 21) Next, read and accept the Compiere Public License agreement.

Hint: You might get more than one license agreement, depending on the applications that you are installing.

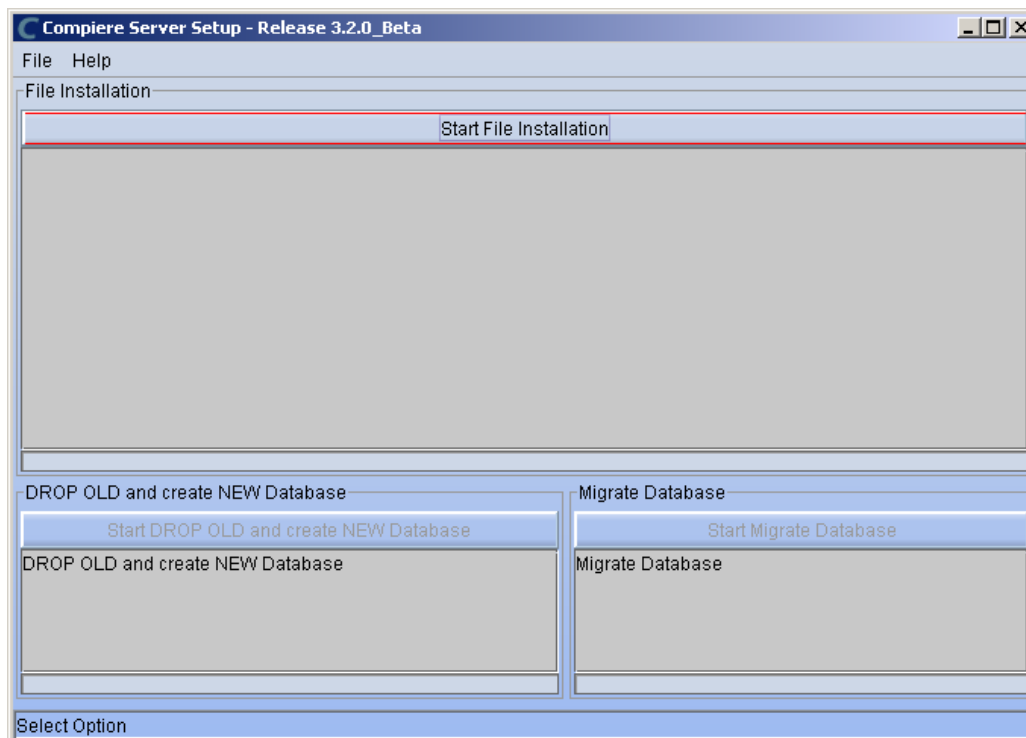


22) Then read and accept the Compiere Commercial License agreement.

Hint: You might get more than one license agreement, depending on the applications that you are installing.



23) After accepting the license agreement the following window will display.

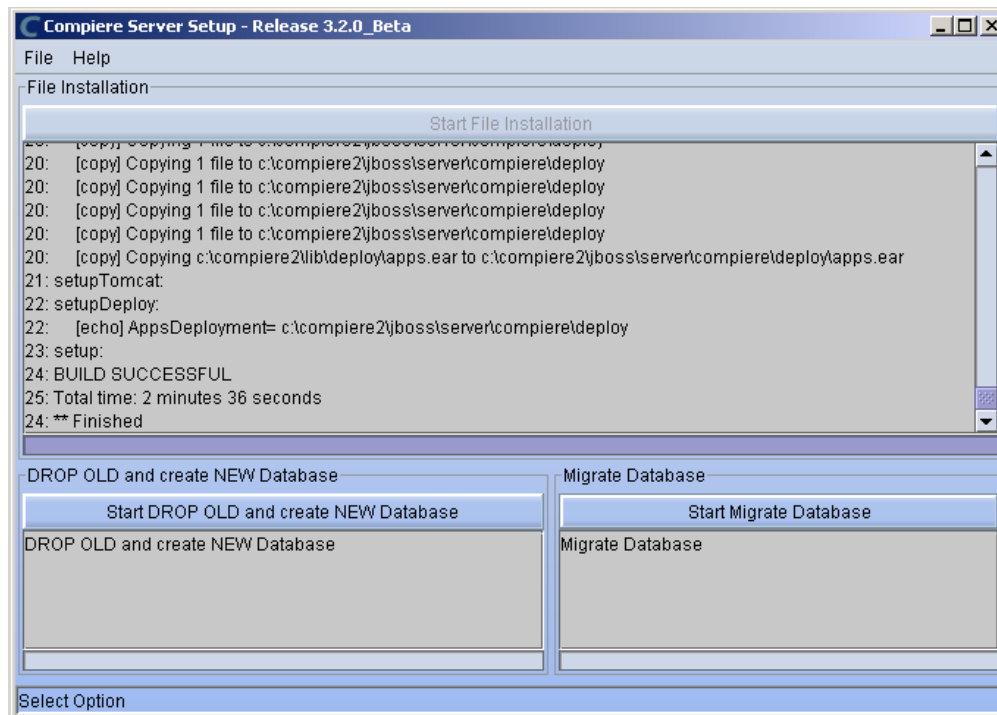


24) Select Start File Installation.

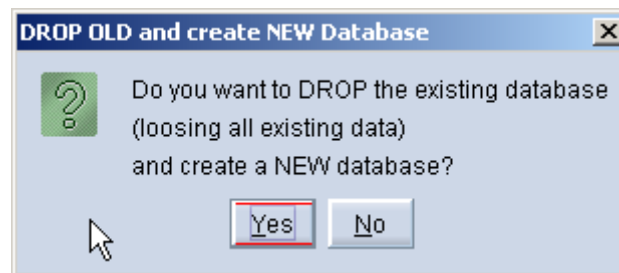
Important: At this point, you must be connected to the internet to continue or the installation will not succeed.

25) Once the Server install is complete, select Start DROP OLD and Create NEW Database.

Note: If you already have a Compiere database in your system, you will be presented with a split panel after 'Start Server Install'. Click the left panel if you want to replace the existing database with the new database.

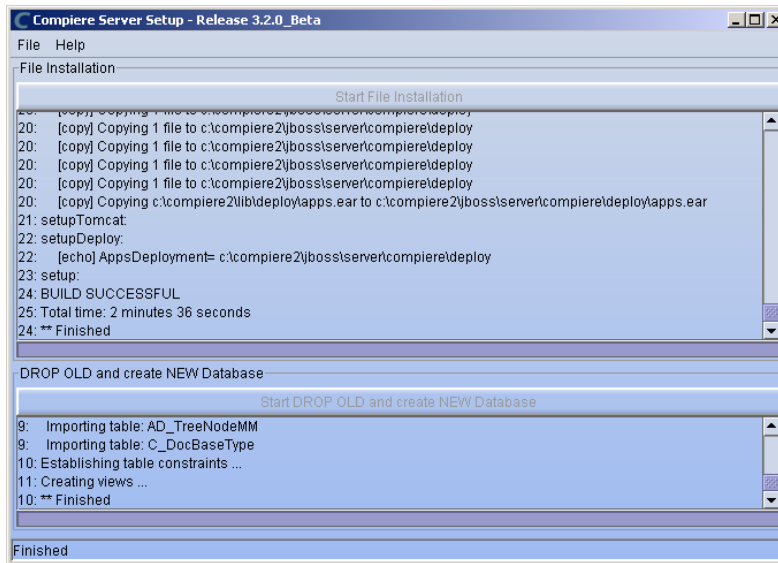


26) At the prompt select 'Yes' to Drop the existing Database and create a new database.



Warning: If you choose to replace the existing database, all data in the existing database will be removed.

27) Verify that you see a '10: ** Finished' message at the end of this step. Then a new window should pop-up to do the license validation.



Hint: If you only intend to use the Community Edition of Compiere 3.2, you may skip the following steps and go to the Application Server section.

Important: For customers with a valid support contract with Compiere, this is a required step to ensure that the features associated with the support level are enabled. If you are a customer and do not have a web store login, please contact your system administrator or Compiere Support first. If you are not a customer and would like to obtain a trial license for the Professional Edition, please [Contact Us](#) and request the files for the Professional Edition.

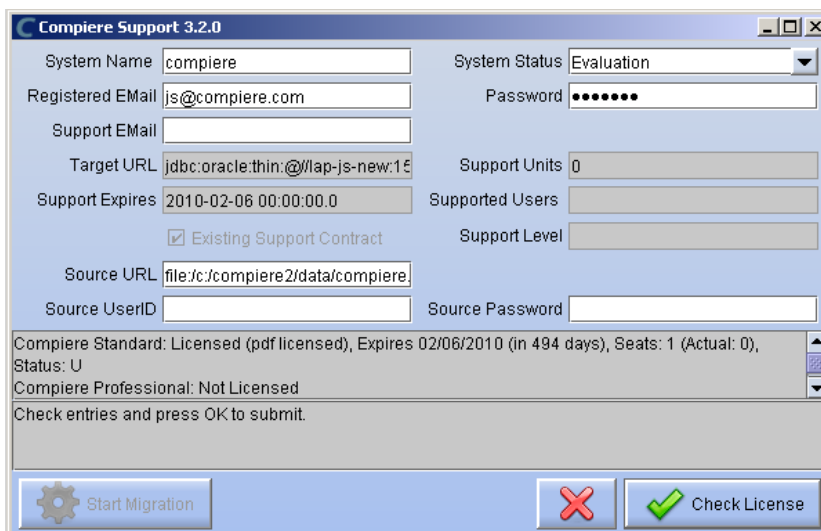
28) Provide the following information exactly as it was registered in the Compiere Web store and click Check License to validate your asset information.

- System Name (name provided in the web store registration)
- Registered Email (email address provided in the web store registration)
- Password (web store password)

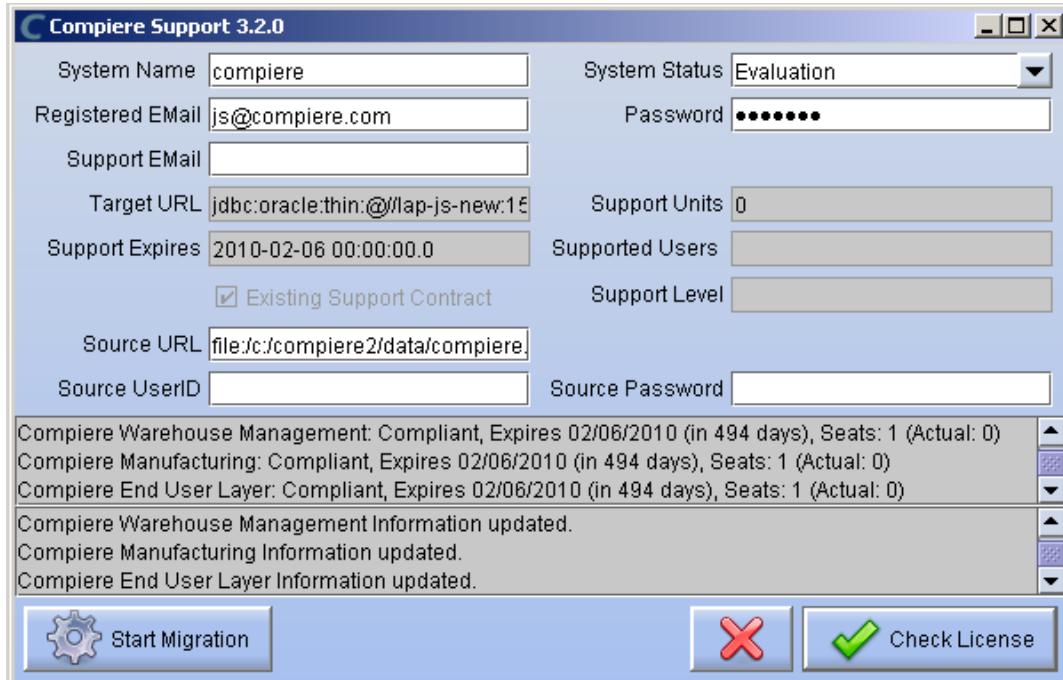
29) To verify your license, click the "Check License" button.

Tip: Do not click Start Migration.

Notice that internet access is required to validate the license information.



30) Review that your license information has been validated.



31) After Compiere Professional license has been verified, click the “X” to close the window.

Note: If you get the error “You do not have an appropriate license to use this feature” when starting the web UI, then login to the server and execute `utils/RUN_Support` to validate again your license and restart the application server.

32) Close any additional Setup and /or Support windows.

Complete Server Setup

3. Start the Compiere Application Server

- 1) To start the application server execute `utils/RUN_Server2`
- 2) There should be no errors. Check the logs in `$COMPIERE_HOME/jboss/server/compiere/logs` to verify this.
- 3) Common problems include ports already in use
 - 17:41:09,085 ERROR [NamingService] Could not start on port 1099
java.net.BindException: Address already in use: JVM_Bind
at java.net.PlainSocketImpl.socketBind(Native Method)
 - There is another program using port 1099; Stop it and restart `Run_Server2`
or setup Compiere to use another port in `RUN_setup`. Likely port conflicts:
 - 80 - You have some other web server running (or you need privileges under Linux/Unix)
 - 8080 - The Oracle Database uses that
 - 1099 - Often used by IDEs for debugging

Start Compiere

4. Start the Compiere Client

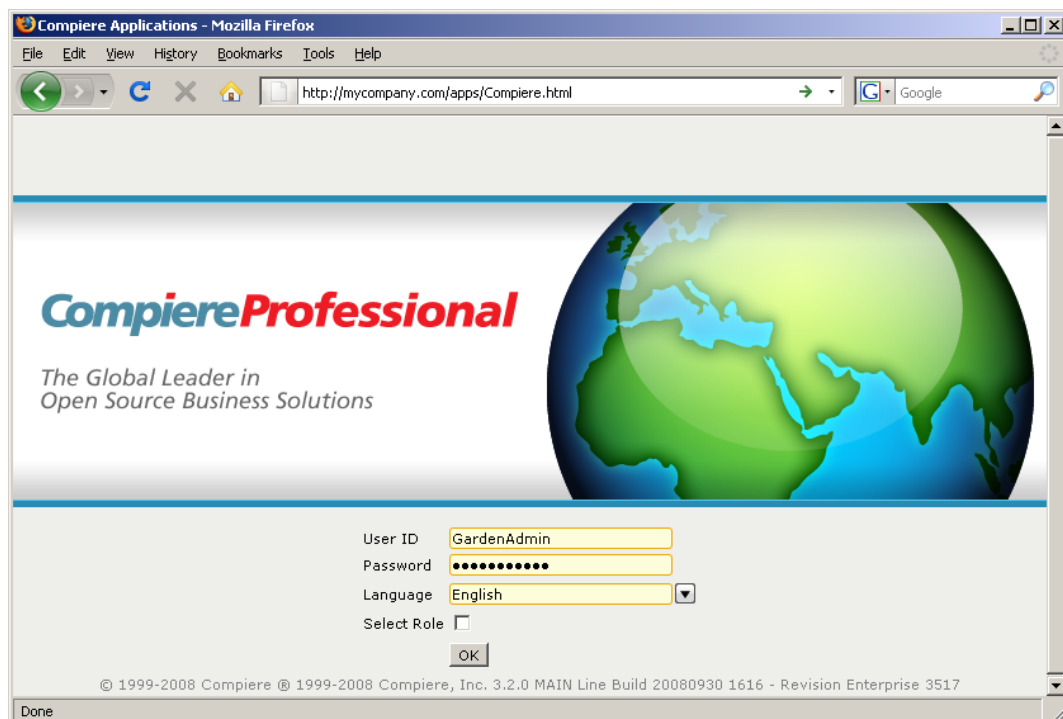
- 1) Start the Swing client by double clicking on the Compiere shortcut in your desktop or by executing **RUN_Compiere2** from the \$COMPIERE_HOME directory

Default users and passwords for the sample Garden World application:

- GardenUser/GardenUser
- System/System
- GardenAdmin/GardenAdmin
- SuperUser/System



- 2) Alternatively, if you have access to the Professional Edition, you can launch the application from the browser by using the URL: <http://server:port/apps> (e.g. <http://mycompany.com:80/apps>)



Information: For additional information see the Compiere home page <http://www.compiere.com>.