



Compiere 3.2 Installation Instructions Windows System - EnterpriseDB

Compiere Learning Services Division

Table of Contents

Compiere 3.2 Installation Instructions – EnterpriseDB – Windows System

Compiere 3.2 - Installation Instructions – EnterpriseDB **3**

Prerequisites	3
Database Installation	3

Compiere 3.2 New Installation Instructions **8**

Java Installation	8
Edit the Path	8
Download Compiere	8
Complete Server Setup	16
Start Compiere	17

Compiere 3.2 - Installation Instructions – EnterpriseDB

Prerequisites

- Database approved Windows Operating System: Windows 2003 or Windows XP
- Disk Space: > 5 GB (includes database)
- Recommended: Hardware RAID 10
- Memory: > 512 MB - Recommended: > 1 GB
- TCP/IP connection to Clients

Hint: It will ease the installation tremendously, if you have your network set up with DNS server and a domain (actually a must for non-Windows environments). Check with your system administrator - do NOT use IP addresses, use names.

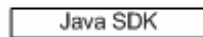
Database Installation

1. Install Database – this document will use Postgres Plus Advanced Server 8.3.
 - 1) First, login as the Administrator or someone in the Administrator group.
 - 2) Get the Postgres Plus Advanced Server 8.3 from the following website: <http://www.enterprisedb.com/products/download.do> Make sure download the 'Postgres Plus Advanced Server 8.3 for Windows
 - 3) Download the executable file appropriate for your OS.

1. Install Database

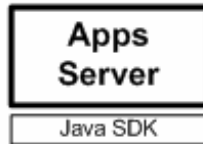


2. Install Java



3. Download Compiere

unzip / tar



4. Setup Compiere

RUN_setup



5. Complete Server Setup

RUN_Server2



- 4) The welcome page displays.

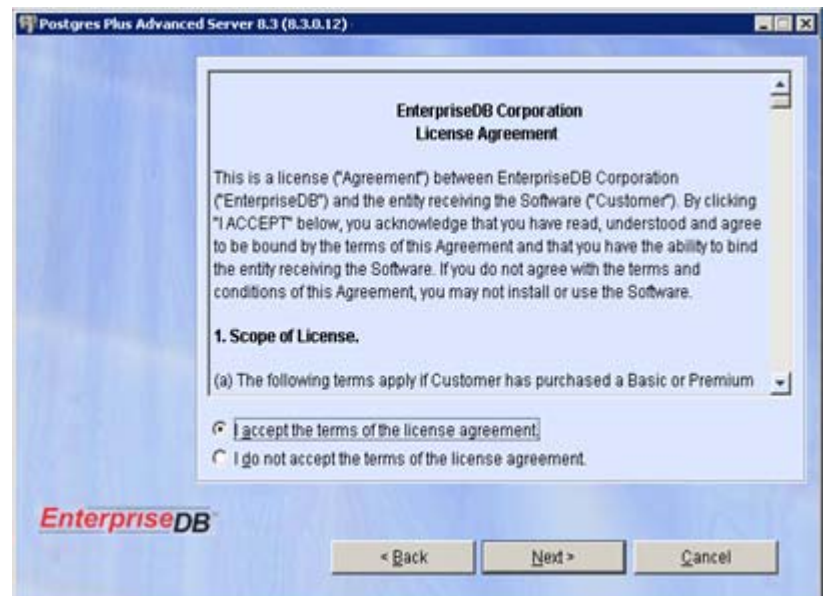
Hint: you may be using a later version.

- 5) Select the Next button to continue with the Installation.



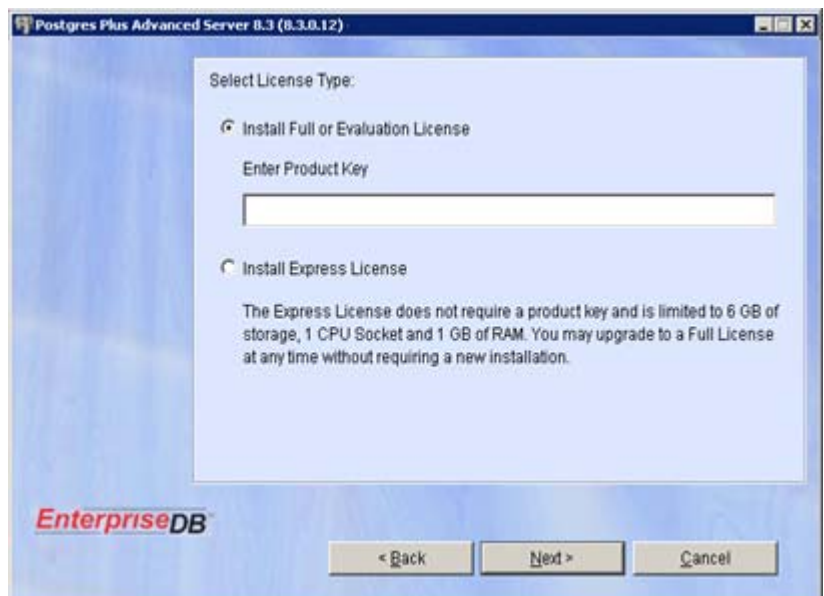
- 6) Review and accept the License agreement.

- 7) Then select the Next button to continue.

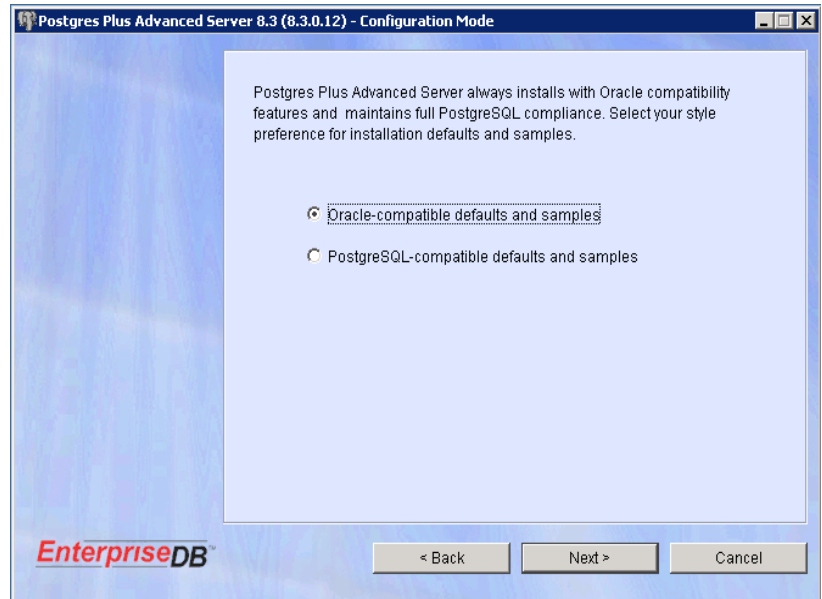


- 8) Provide a Product key for either the Full or Evaluation License of EnterpriseDB or simply select the Express License Option.

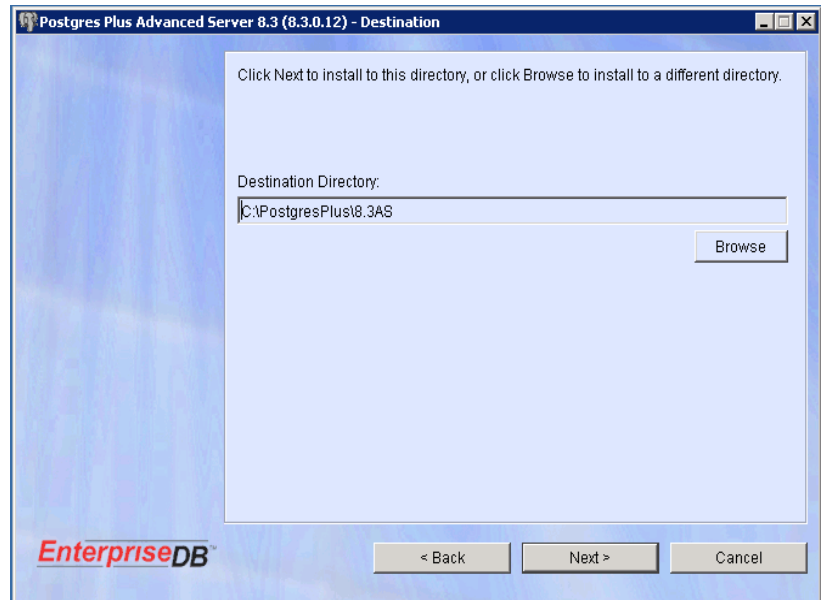
- 9) Select the Next button to proceed.



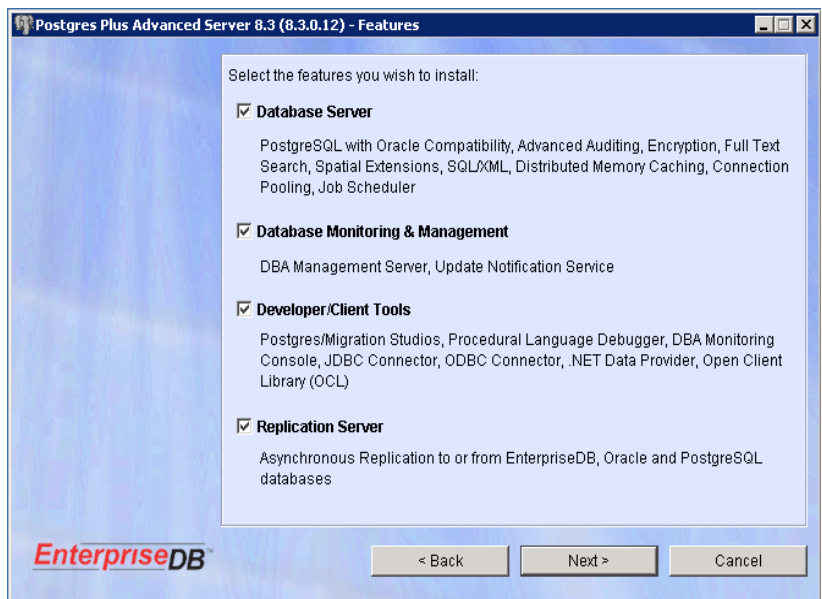
- 10) Select the Oracle-Compatible defaults and samples option.
- 11) Select the Next button to continue.



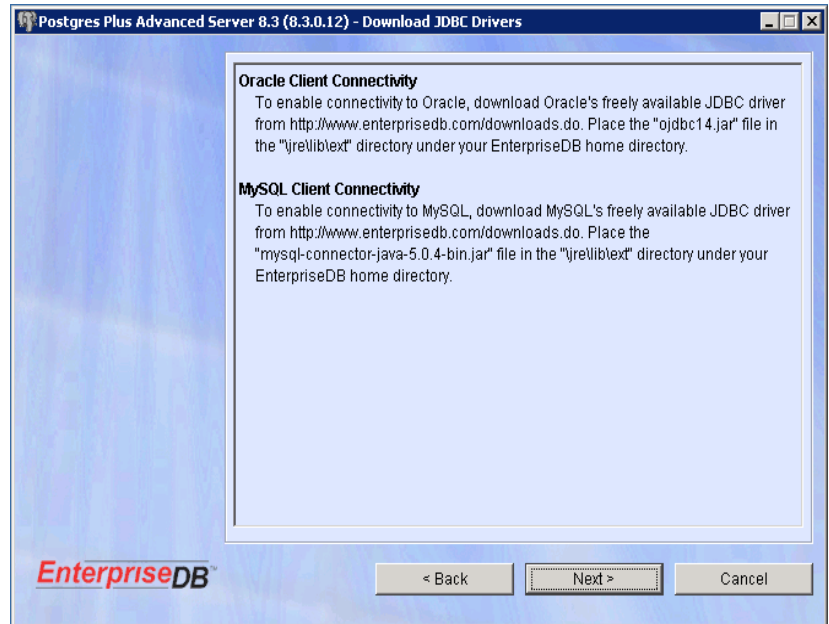
- 12) Select the destination folder by selecting the Browse button.
- Hint:* This document will assume C:\ is the selected directory.
- 13) Select the Next button to continue.



- 14) Under EnterpriseDB features, Accept the default selections.
- 15) Select the Next button to continue.



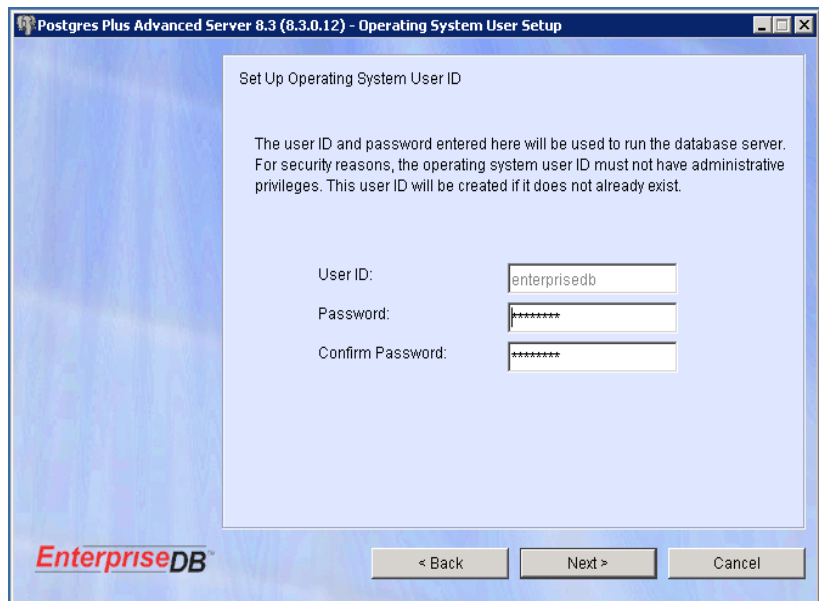
- 16) Take note of the following instructions provided by EnterpriseDB on Oracle Client connectivity.
- 17) Select the Next button to proceed.



- 18) Enter and confirm a User ID and Password for the System Administrator.

Hint: The User ID and Password entered here will be used to run the Database Server.

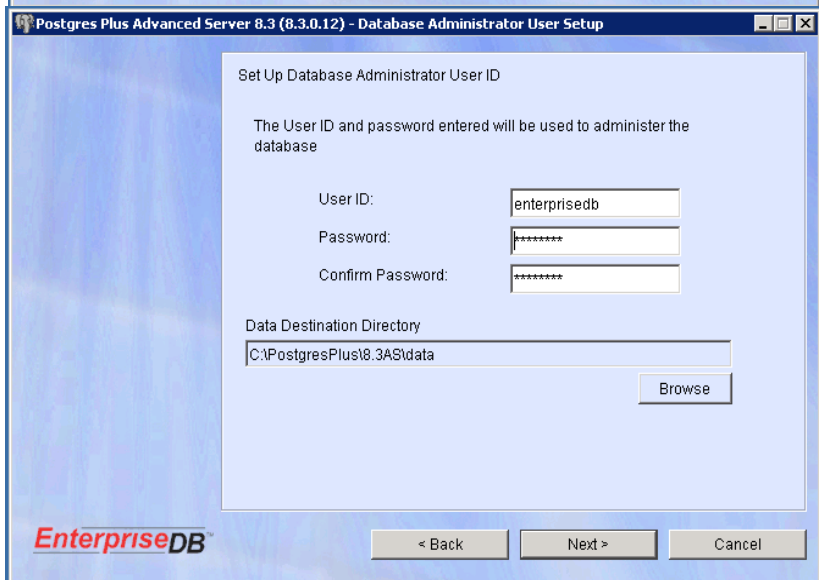
- 19) Then select the Next button to continue.



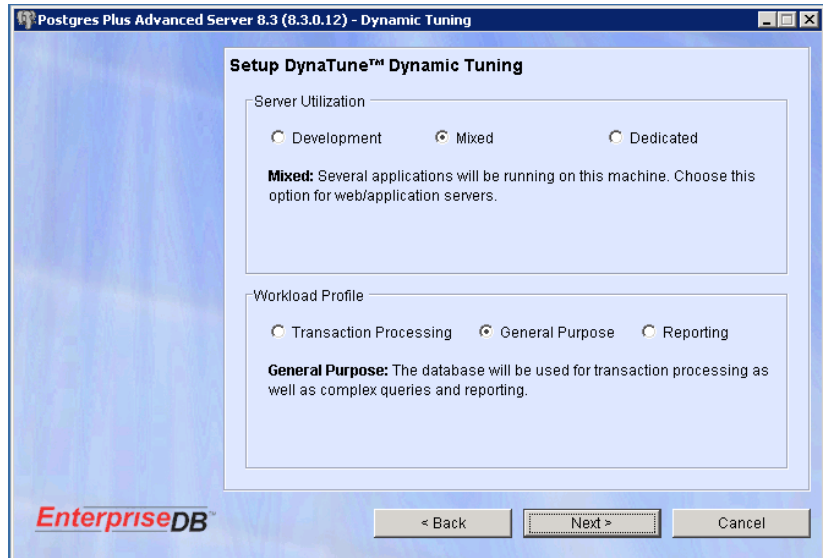
- 20) Next, enter and confirm a User ID and Password for the Database Administrator.

Hint: It is acceptable to use the System Administrator Password entered in Step 17. (This is optional)

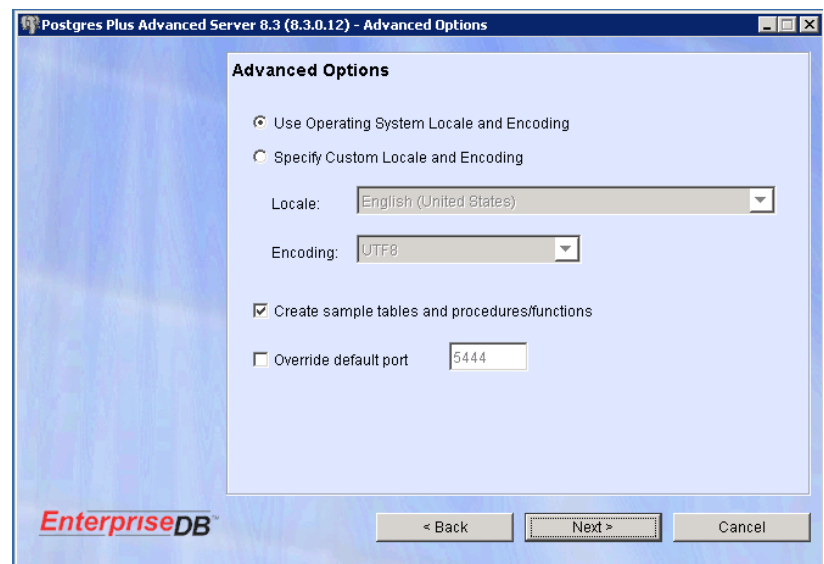
- 21) Select the Next button to continue.



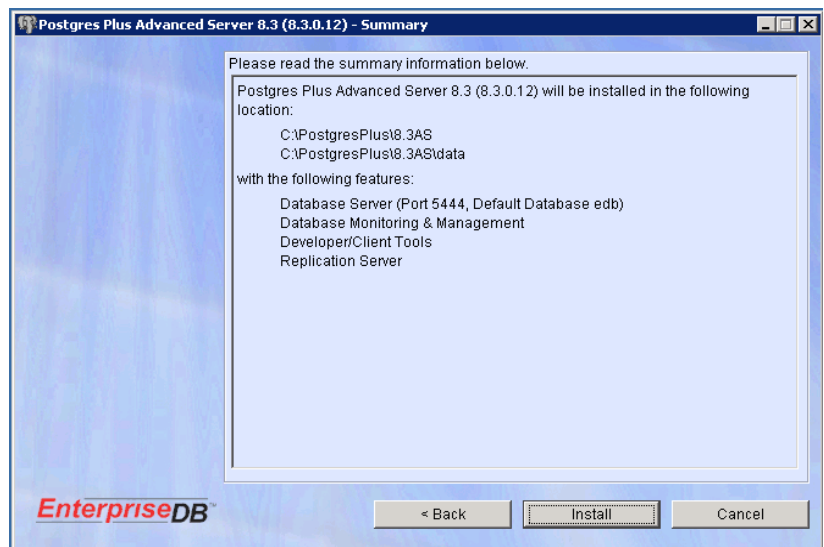
- 22) Select the appropriate option for Dynamic Tuning.
- 23) Select the Next button to continue.



- 24) Under Advanced Options, accept the default options.
- 25) Select the Next button to proceed.



- 26) Review the Installation Settings. Select the Back button to make changes if necessary.
- 27) If the Installation settings are correct, select the Install button to start the Installation.



28) When the Installation is complete, the following confirmation window will display:

29) Check the Launch Developer Studio Option and select Finish to complete the Installation.



30) Once the Developer Studio opens, enter the System Administrator User ID and Password entered in step 17.
Note: This confirms the Database Installation.

Compiere 3.2 New Installation Instructions

Java Installation

1. Download and install [Sun Java JDK 6](#) (SDK), Update 5 or a later version.
Important: The Compiere Server requires the JDK (not just JRE).

Edit the Path

2. Add EnterpriseDB path into PATH
 - 1) Go to Control Panel > System > Advanced > Environment Variables.
 - 2) Add EnterpriseDB path to the end of the PATH environment variable (e.g. C:\EnterpriseDB\8.1\dbserver\bin)

Download Compiere

3. Install /Setup Compiere Server (this includes the Client as well)
 - 1) Download the current version of Compiere: [Download Compiere](#). (3.2 or higher)
 - 2) Extract the .zip file. The steps shown assume that you extract to the root directory, resulting in a COMPIERE_HOME of C:\Compiere2 in Windows or \Compiere2 in Linux.
 - 3) Verify that the bin directory for your database executables is included in the PATH.
 - 4) Execute the script \$COMPIERE_HOME/RUN_Setup.
Note: if the following window does not display, please ensure that the following are updated.
 - Add the folder where you have installed JDK 1.6 at the beginning of the **PATH** system environment variable.
 - Set the **JAVA_HOME** system variable to the location of your java installation (e.g., 'C:\Program Files\Java\jdk1.6.0_5')
 - Set the **COMPIERE_HOME** system variable to the path of your Compiere installation (e.g., 'C:\Compiere2')

- 5) Select Database Type of postgresQL.
- 6) In System Password, use the Database Administrator User password.
- 7) For Database Password, use 'compiere' (or any password.)
- 8) Enter or update the Parameters as necessary.
- 9) For Server Names, i.e., (Application, Database and Mail) use the DNS name of the server.
Hint: Do not use localhost (127.0.0.1) or IP address.

The screenshot shows the 'Compiere Server Setup - Release 3.2.0_Beta' window. It has a menu bar with 'File' and 'Help'. The configuration is organized into several sections:

- Java:** Java Home (C:\Program Files\Java\jdk1.6.0), Java VM (sun).
- Compiere:** Compiere Home (c:\compiere2), KeyStore Password (masked).
- Application Server:** Application Server (lap-js-new), Deployment (c:\compiere2\jboss\server\com), Web Port (80), Server Type (jboss), JNP Port (1099), SSL (443).
- Database Server:** Database Server (lap-js-new), Database Name (xe), Database Port (1521), Database User (compiere), Database Type (oracleXE), Database Search (xe), System Password (masked), Database Password (masked).
- Mail Server:** Mail Server (lap-js-new), Mail User (info), Admin Email (info@lap-js-new), Mail Password (masked).

At the bottom, there are three buttons: 'Test' (highlighted with a red box), a help button (question mark), and a 'Save' button.

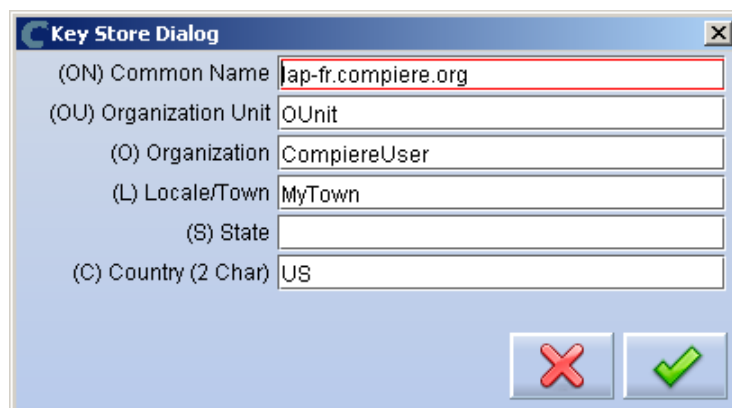
- 10) Select the Help button, for information on any field.
- 11) Select the Test button to check the parameters.
Note: Parameters must be verified in order to save
- 12) If an entry is unverifiable, it will display with a red X. Correct the entry and re-select Test/Save.
- 13) Once all fields are verified, click the Save button to proceed.

This screenshot shows the same 'Compiere Server Setup' window after the 'Test' button was clicked. Green checkmarks are now visible next to the following fields:

- Java Home
- Compiere Home
- Application Server
- Deployment
- Web Port
- Database Server
- Database Type
- Database Search
- System Password
- Database Password
- Mail Server
- Mail Password

The 'Test' button is still highlighted with a red box. The 'Save' button is also visible. The status bar at the bottom shows 'Ok'.

- 14) At the prompt enter your company information as appropriate and verify that the common name is the address of your application server. Once all fields are complete, click ok to continue.



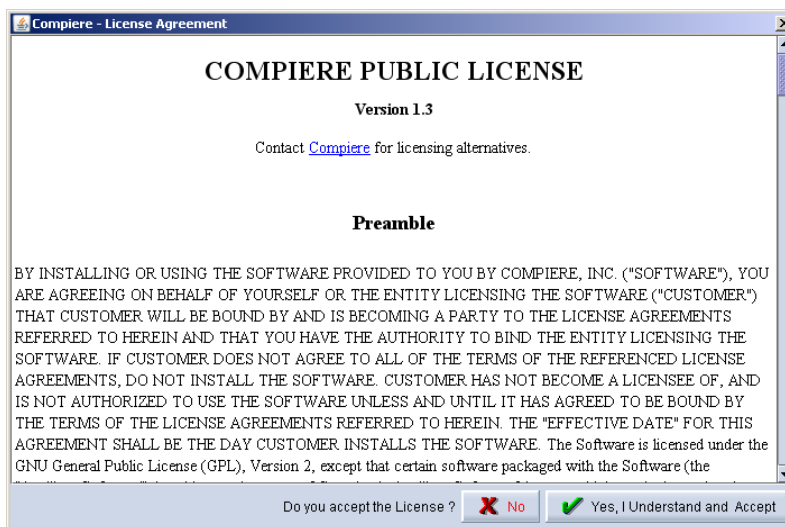
The 'Key Store Dialog' window contains the following fields:

Field Label	Value
(ON) Common Name	lap-fr.compiere.org
(OU) Organization Unit	OUnit
(O) Organization	CompiereUser
(L) Locale/Town	MyTown
(S) State	
(C) Country (2 Char)	US

Buttons: [X] [Checkmark]

- 15) Next, read and accept the license agreement.

Hint: You might get more than one license agreement, depending on the components that you are installing.



COMPIERE PUBLIC LICENSE
Version 1.3
Contact [Compiere](#) for licensing alternatives.

Preamble


BY INSTALLING OR USING THE SOFTWARE PROVIDED TO YOU BY COMPIERE, INC. ("SOFTWARE"), YOU ARE AGREEING ON BEHALF OF YOURSELF OR THE ENTITY LICENSING THE SOFTWARE ("CUSTOMER") THAT CUSTOMER WILL BE BOUND BY AND IS BECOMING A PARTY TO THE LICENSE AGREEMENTS REFERRED TO HEREIN AND THAT YOU HAVE THE AUTHORITY TO BIND THE ENTITY LICENSING THE SOFTWARE. IF CUSTOMER DOES NOT AGREE TO ALL OF THE TERMS OF THE REFERENCED LICENSE AGREEMENTS, DO NOT INSTALL THE SOFTWARE. CUSTOMER HAS NOT BECOME A LICENSEE OF, AND IS NOT AUTHORIZED TO USE THE SOFTWARE UNLESS AND UNTIL IT HAS AGREED TO BE BOUND BY THE TERMS OF THE LICENSE AGREEMENTS REFERRED TO HEREIN. THE "EFFECTIVE DATE" FOR THIS AGREEMENT SHALL BE THE DAY CUSTOMER INSTALLS THE SOFTWARE. The Software is licensed under the GNU General Public License (GPL), Version 2, except that certain software packaged with the Software (the

Do you accept the License ? [X] No [Checkmark] Yes, I Understand and Accept

- 16) A default security key will be generated, click 'Ok' to continue.



Compiere Server Setup

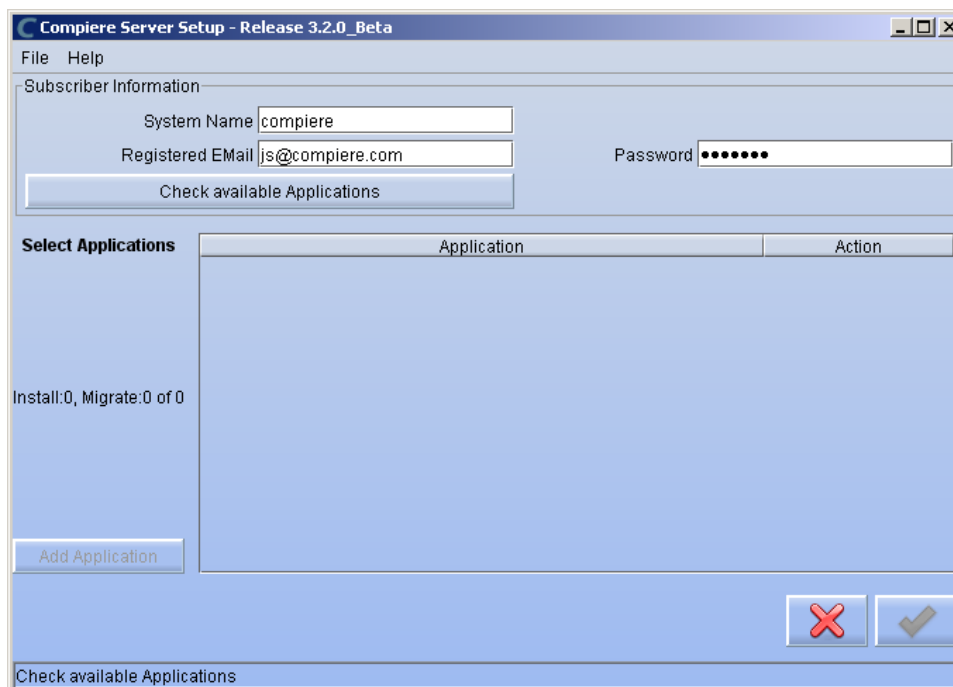
 Your new Security Key (lib/CompiereSecure.dat) was created for you to be used for Encryption. Please make sure to back it up securely. If lost, you are not able to recover encrypted data.

[OK]

- 17) The Next step is to provide the Subscriber Information. Current customers should provide the subscriber information (**System Name, Email and Password**) exactly as it was registered in the Compiere Web Store to get a complete list of applications.

Click Check Available Applications to get a list of applications that are available to be installed.

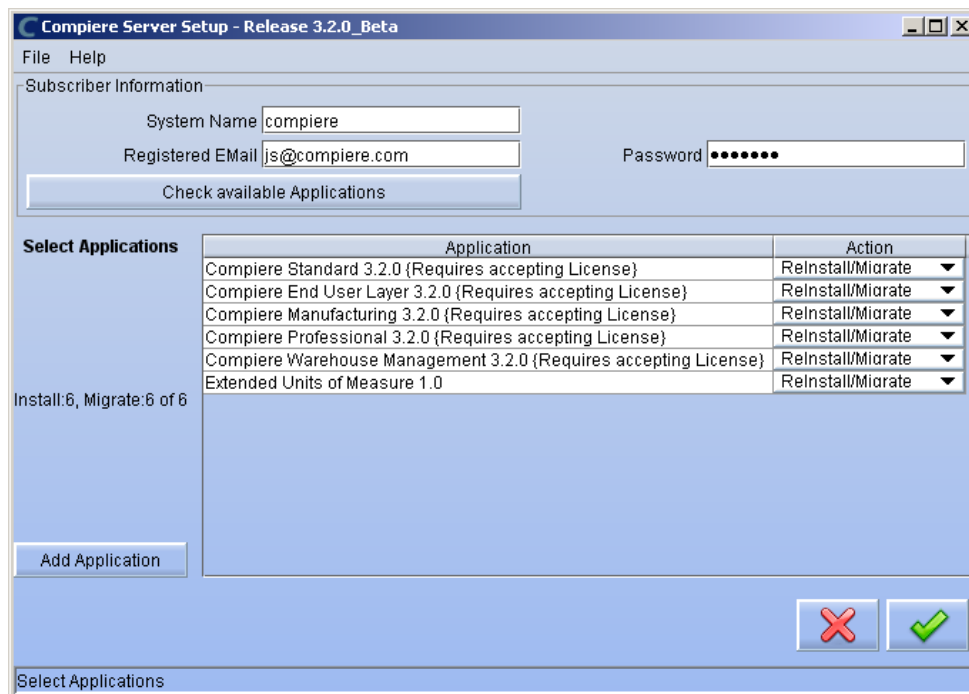
Tip: Community Edition users may leave the fields blank and click “Check available components” to install the Community Edition.



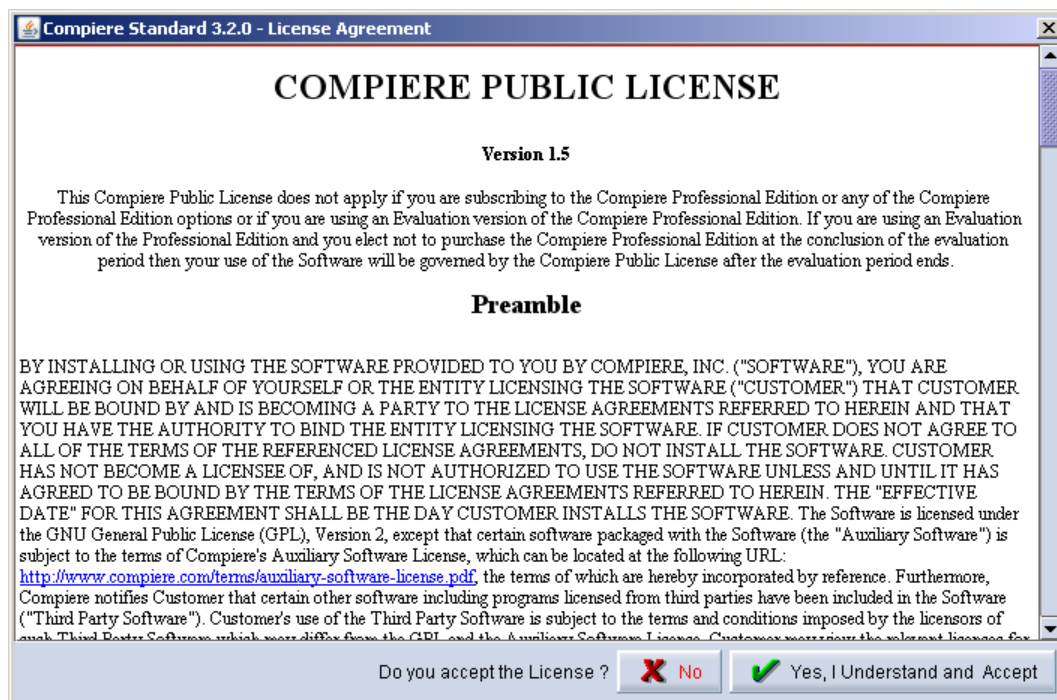
- 18) Select the applications that you would like to install. You can include additional applications by using the button Add Application.

By default all available applications will be installed. If you do not wish to install one of them you should change the action field from “New Install” to “-None-“. Notice that Compiere Core is a *Mandatory Prerequisite* and must be selected.

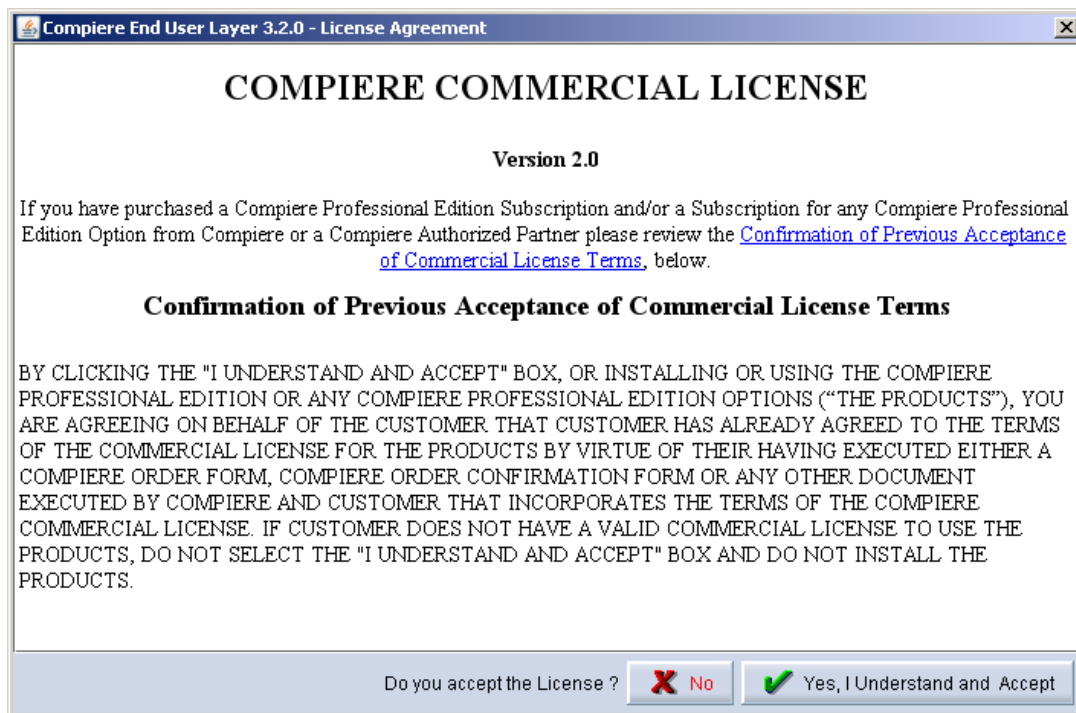
Select the OK button to continue



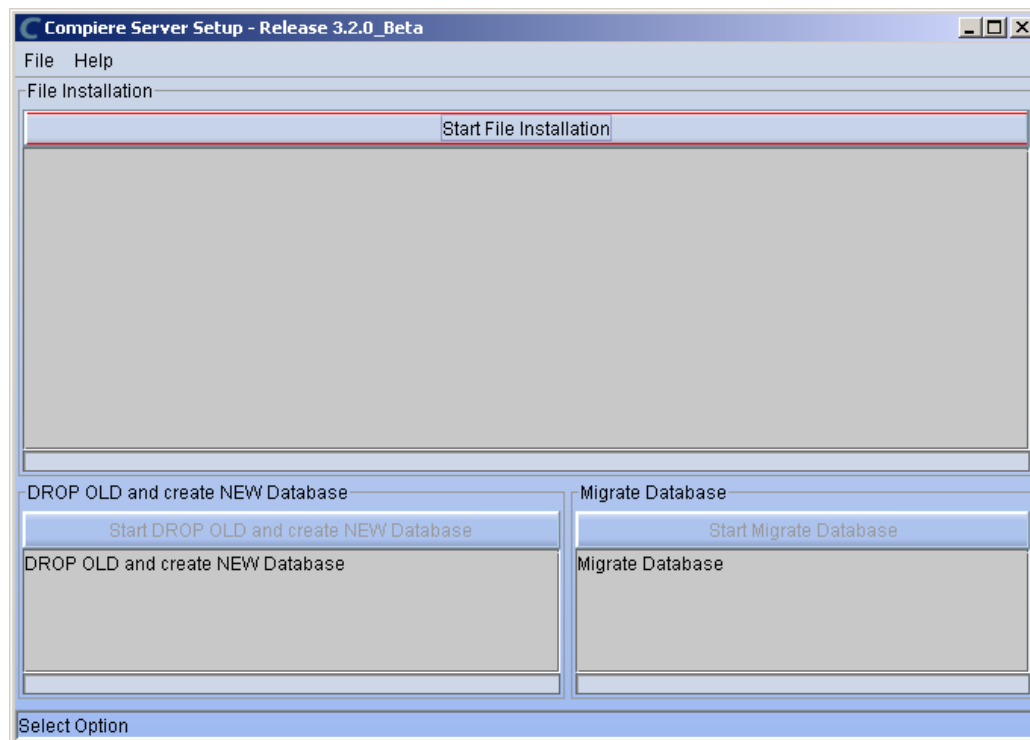
- 19) Next, read and accept the Compiere Public License agreement.
Hint: You might get more than one license agreement, depending on the applications that you are installing.



- 20) Then read and accept the Compiere Commercial License agreement.
Hint: You might get more than one license agreement, depending on the applications that you are installing.



21) After accepting the license agreement the following window will display:

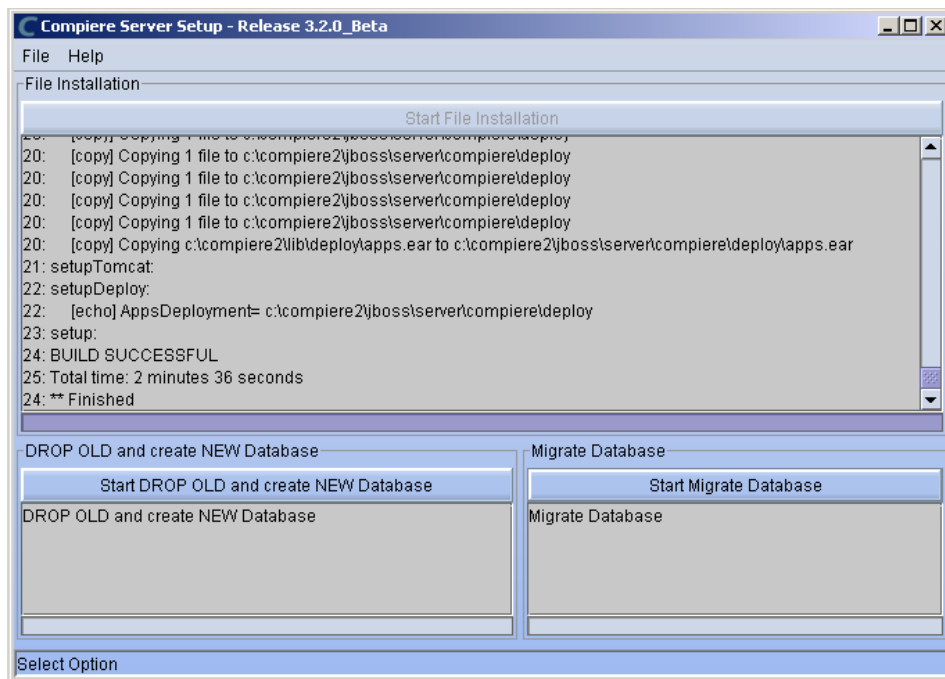


22) Select Start File Installation.

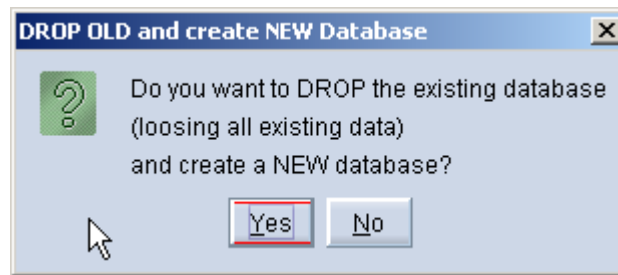
Important: At this point, you must be connected to the internet to continue or the installation will not succeed.

23) Once the file installation is complete, select Start Create New Database.

Note: If you already have a Compiere database in your system, you will be presented with a split panel after 'Start Server Install'. Click the left panel (Start DROP OLD and create NEW Database) if you want to replace the existing database with the new database.

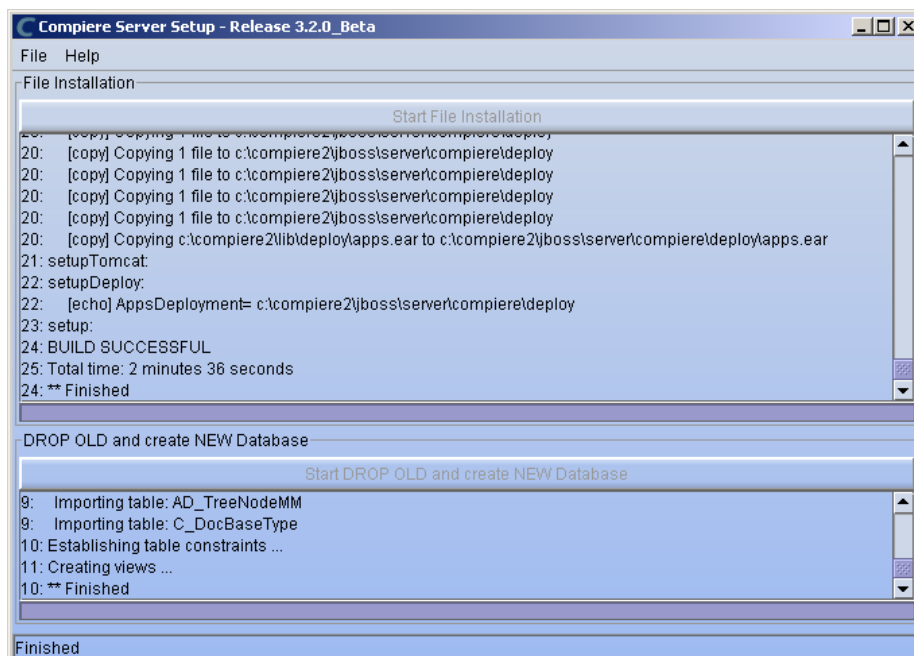


24) At the prompt select 'Yes' to Drop the existing Database and create a new database.



Warning: If you choose to replace the existing database, all data in the existing database will be removed.

25) Verify that you see a '10: ** Finished' message at the end of this step. Then a new window should pop-up to do the license validation.



Hint: If you only intend to use the Community Edition of Compiere 3.2, you may skip the following steps and go to the Application Server section.

Important: For customers with a valid support contract with Compiere, this is a required step to ensure that the features associated with the support level are enabled. If you are a customer and do not have a web store login, please contact your system administrator or Compiere Support first. If you are not a customer and would like to obtain a trial license for the Professional Edition, please [Contact Us](#) and request the files for the Professional Edition.

26) Provide the following information exactly as it was registered in the Compiere Web store and click Check License to validate your asset information.

- System Name (name provided in the web store registration)
- Registered Email (email address provided in the web store registration)
- Password (web store password)

Compiere Support 3.2.0

System Name	compiere	System Status	Evaluation
Registered Email	js@compiere.com	Password
Support Email			
Target URL	jdbc:oracle:thin:@lap-js-new:1E	Support Units	0
Support Expires	2010-02-06 00:00:00.0	Supported Users	
<input checked="" type="checkbox"/> Existing Support Contract		Support Level	
Source URL	file:/c:/compiere2/data/compiere.		
Source UserID		Source Password	

Compiere Standard: Licensed (pdf licensed), Expires 02/06/2010 (in 494 days), Seats: 1 (Actual: 0), Status: U
Compiere Professional: Not Licensed

Check entries and press OK to submit.

27) To verify your license, click the “Check License” button.

Tip: Do not click Start Migration.

Notice that internet access is required to validate the license information.

28) Review that your license information has been validated.

29) After Compiere Professional license has been verified, click the “X” to close the window.

Note: If the error “You do not have an appropriate license to use this feature” appears when starting the Web Application, execute `utils/RUN_Support` to validate your license and restart the application server.

30) Close the Support and the Setup windows.

Complete Server Setup

4. Start the Compiere Application Server

- 1) You can now start the JBoss based Compiere Application Server via **RUN_Server2** in the `$COMPIERE_HOME/utils` directory.
- 2) There should be no errors. Check the logs in `$COMPIERE_HOME/jboss/server/compiere/logs` to verify this.
- 3) Common problems include ports already in use
 - 17:41:09,085 ERROR [NamingService] Could not start on port 1099
java.net.BindException: Address already in use: JVM_Bind
at java.net.PlainSocketImpl.socketBind(Native Method)
 - There is another program using port 1099; Stop it and restart `Run_Server2` or setup Compiere to use another port in `RUN_setup`.

Likely port conflicts:

- 80 - You have some other web server running (or you need privileges under Linux/Unix)
- 8080 - The Oracle Database uses that
- 1099 - Often used by IDEs for debugging

Start Compiere

5. Start the Compiere Client

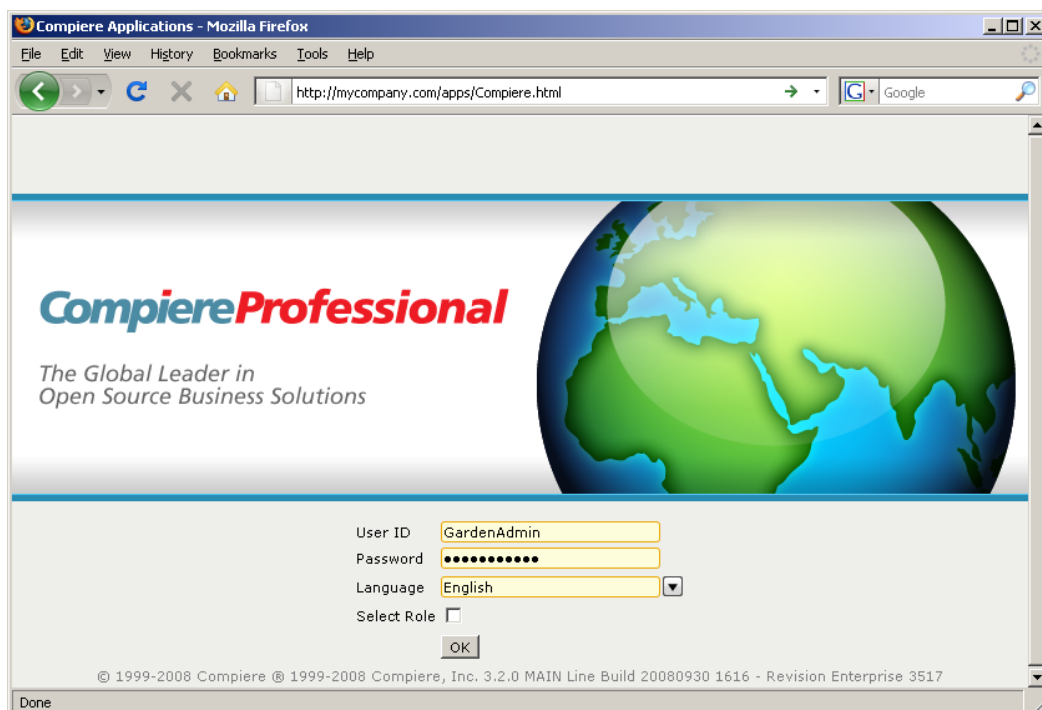
- 1) Start the Swing client by double clicking on the Compiere shortcut in your desktop or by executing **RUN_Compiere2** from the \$COMPIERE_HOME directory.

Default users and passwords for the sample Garden World application.

- GardenUser/GardenUser
- System/System
- GardenAdmin/GardenAdmin
- SuperUser/System



- 2) Alternatively, if you have access to the Professional Edition, you can launch the application from the browser by using the URL: <http://server:port/apps> (e.g. <http://mycompany.com:80/apps>)



Information: For additional information see the Compiere home page <http://www.compiere.com>.