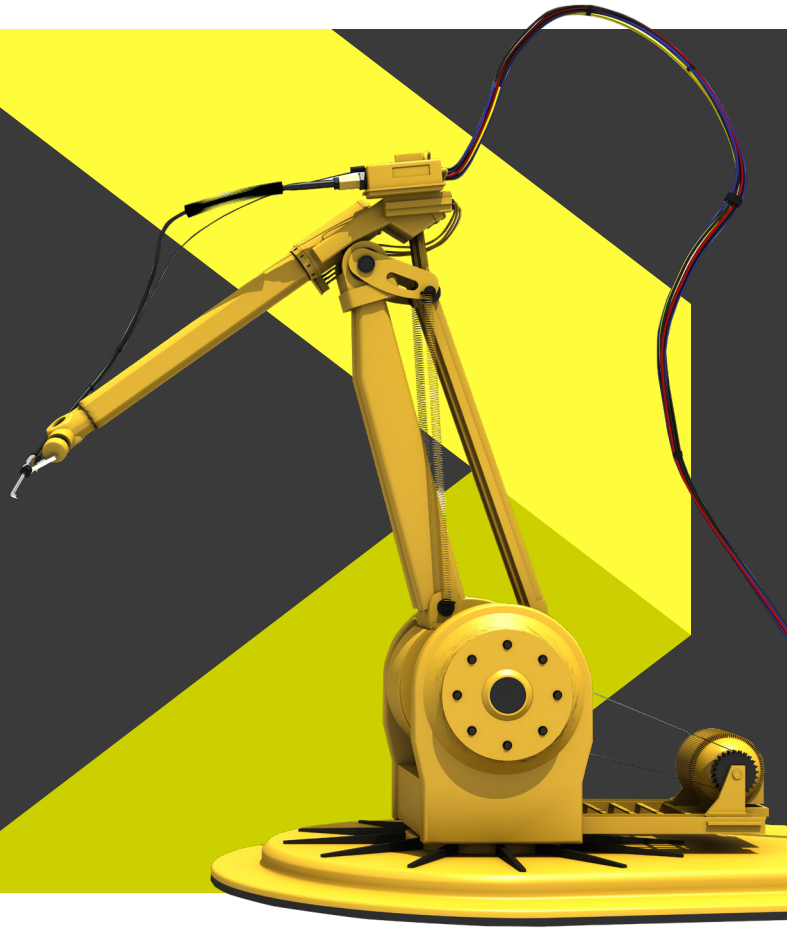


Aptean EAM

Asset Maintenance Made Easy



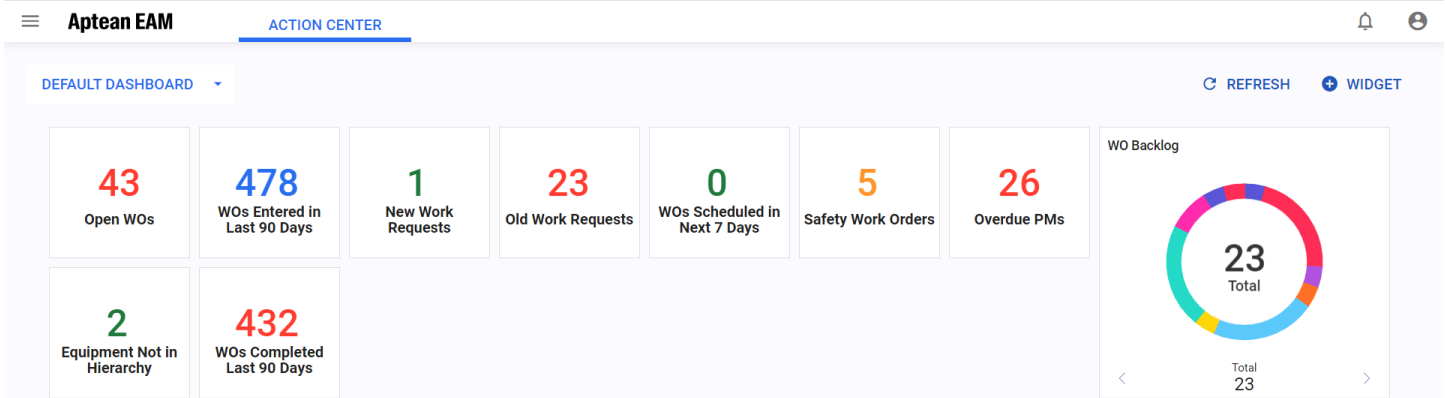
Maintenance across plants, lines and even individual machines is essential for protecting your bottom line. Any downtime or stoppages can halt production and cost time and money.

A solution that allows you to streamline work orders, free up your technicians to inspect and repair on demand and maintain just the right level of spare parts, will save time, money and reduce maintenance costs.

Aptean EAM is designed by maintenance professionals for maintenance professionals with the right features you need to get the job done without slowing you down. Aptean EAM provides real-time visibility of your maintenance operations and allows you to take action ahead of any potential downtime. Our solution is mobile and easy to use for quicker adoption and easily configurable, eliminating the need for costly customizations.

Benefits

- » Connect your data across all machines, lines, teams and sites, ensuring accurate metrics and maintenance efficiency.
- » Create work orders or stock removals for selected objects with a new, intuitive interface with only a single click.
- » Monitor asset performance and the effectiveness of the maintenance process with visual dashboards and reporting at your fingertips.
- » Get ahead of costly downtime with automatic data collection with actionable insights.



Boost asset performance with a new intuitive experience

Aptean EAM allows users a unique combination of simplicity and deep functionality featuring a visual interface, graphical scheduling and thoughtful functionality for your processes. Configurable dashboards and standard reports present critical KPI's creating awareness of asset performance and effectiveness in the maintenance process to make informed decisions.

- › **Streamlined Experience** – A new modern interface with intuitive workflows that help increase efficiency. The solution can be implemented in only a matter of hours.
- › **Greater Transparency** – Provides visibility while controlling access to data and work processes for staff at each site to make sure only authorized users are making updates.
- › **Stay Ahead of the Curve** – You will always stay updated with the latest features and best practices.
- › **Global Visibility** – The solution supports multilingual sites. Additionally, users can translate data from multiple languages to maintain visibility across all of your locations.
- › **Document Compatibility** – Multiple document types such as PDF, Word, Excel and others can be linked and printed with your work orders.

Key Features

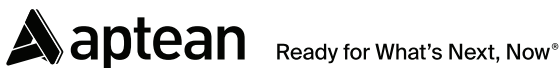
- › **Simplify Processes** – Provides management visibility and operation execution for either a single site, or across multiple sites and warehouses, by channeling information for analysis and reporting .
- › **Preventive and Proactive Maintenance** – Reduce downtime by keeping machines running optimally and reliably.
- › **Improved Inventory Control** – Optimizes your MRO inventory by ensuring the right parts are available and get to the right place at the right time, reducing your overhead costs.
- › **Increase Technician Efficiency** – Enables mobile work orders, automatic email alerts and review/ approve requests all through smartphones or tablets.
- › **Audit and Regulatory Compliance** – Ensure governance of all regulatory and audit standards to achieve compliance. Perform mobile inspections regularly to capture data, maintain assets and extend machine life.
- › **Easy Resource Management** – Tracks staff and contractor data to assign the right work tasks to the right people at the right time, minimizing unplanned downtime and improving efficiency.
- › **Decisions Anytime Anywhere** – Sends automatic email alerts when review or approval is needed to keep things moving. Maintenance work requests can be sent real-time through a tablet or smartphone.



Are you Ready to Learn More?

Want to learn more about Aptean EAM?

Contact Us at info@aptean.com or visit www.aptean.com.



About Aptean

Aptean is one of the world's leading providers of industry-specific software. Our enterprise resource planning and supply chain solutions are uniquely designed to meet the needs of specialized manufacturers and distributors, while our compliance solutions serve specific markets such as finance and life sciences. With both cloud and on-premise deployment options, Aptean's products, services and unmatched expertise help businesses of all sizes, across many industries, to scale and succeed.

For more information, visit www.aptean.com.