

Aptean PLM
Lascom Edition

Streamline Your Entire Product Lifecycle

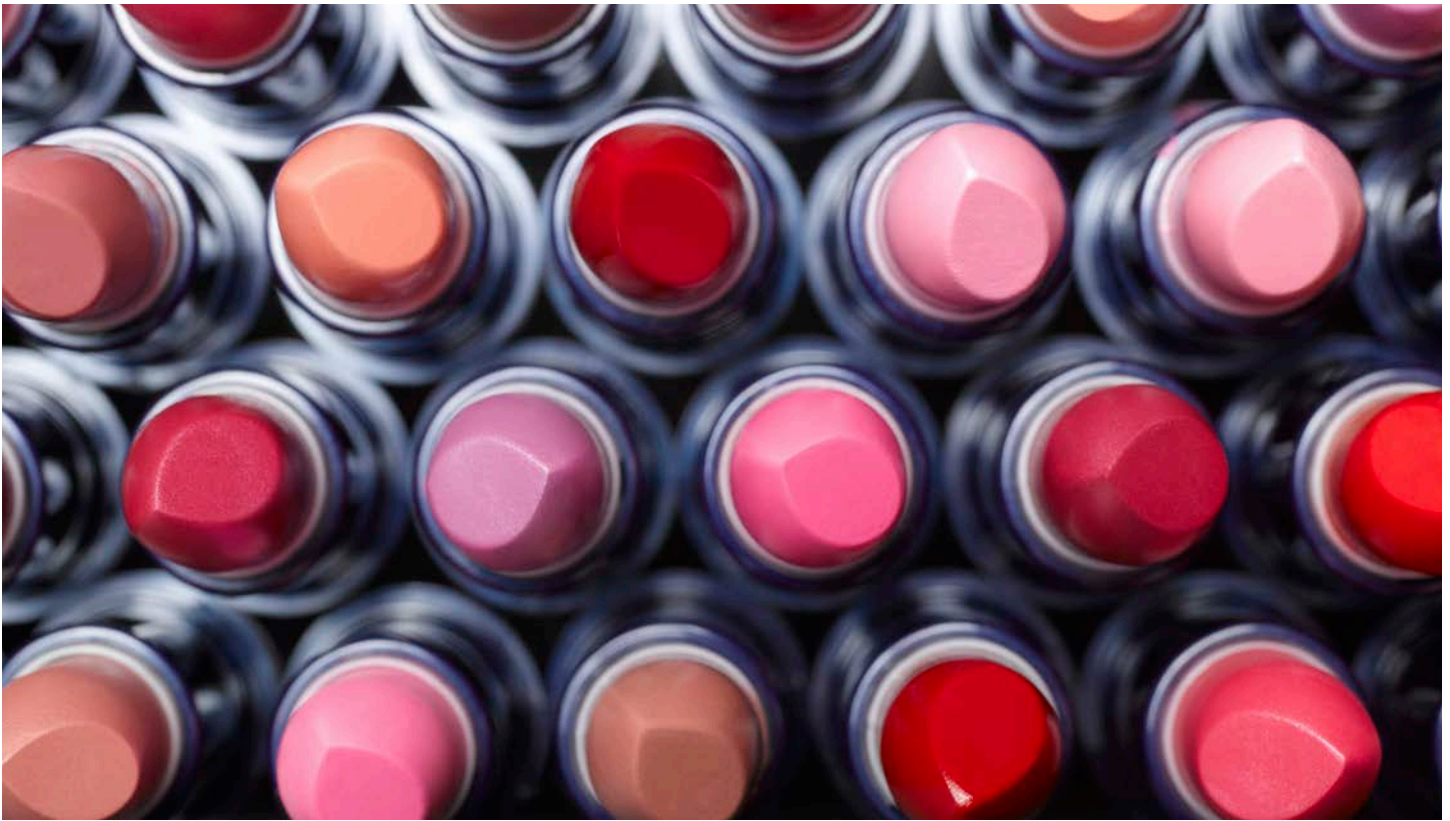


Aptean PLM *Lascom Edition* is a prepackaged solution dedicated to the development and portfolio management of Consumer Packaged Goods (CPG). While the solution can be used for goods across a wide range of industries, the cosmetics and food/beverage industries see Aptean PLM *Lascom Edition* as a must-have.

Our solution streamlines each step of a project from ideation to product launch. The entire product lifecycle is tracked from the original marketing brief to any necessary disposal – including the formulation, packaging design and compliance review steps. All your business functions can work around a single, secure platform to develop compliant products efficiently and effectively. Plus, you can share information across different ERP systems and even external suppliers for added functionality.

Benefits

- » Streamline the creation of your product portfolio
- » Shorten time to market and product launch timelines
- » Effectively manage innovation
- » Equip your teams with the ability to adhere to regulations and remain compliant
- » Centralize the documentation relating to your products
- » Start projects quickly and easily monitor each milestone
- » Enable R&D with formulation tools that even keep track of prototypes
- » Capture information of all types across both internal and external teams



Working with Apteon PLM *Lascom Edition* not only helps you manage innovation, but also makes your teams more efficient. If you're looking to better meet customer demands or improve your time to market while maintaining product quality—look no further.

- ▶ **Product Lifecycle Management (PLM)** – Manage the lifecycle of your products and their components. All evolutions of the product are traced through the different versions allowing you to have one version of the truth.
- ▶ **Product Portfolio Management** – Manage your product repository easily using classification and search tools. Take advantage of our integrated Business Intelligence tool to manage the data.
- ▶ **Project Management** – Launch new projects and easily monitor milestones. Keep an eye on your teams' workload and quickly identify any bottlenecks or delays.
- ▶ **Product Development** – Manage your product innovation, from planning all the way through to implementation including formulation, labeling, regulatory monitoring and more.
- ▶ **Quality and Regulatory Compliance** – Every ingredient and nutritional fact of each product is stored in a centralized location where it can be easily queried. Quality events can be easily recorded for reference.
- ▶ **Collaboration** – Both internal and external suppliers can share information with you directly in Apteon PLM *Lascom Edition*. No more pen-and-paper ambiguity or time-consuming information silos.
- ▶ **Electronic Document Management** – Store and manage the evolution of your documents using electronic document management (EDM) integrated with Apteon PLM *Lascom Edition*. You can easily document your product development.
- ▶ **Cloud-Ready Software** – Experience a lower total cost of ownership, faster adoption, real-time access and an ability to focus on growing your business instead of managing your technology.



Key Features

- › **Specification & Document Management** – Effectively manage the data and documents related to your products and their components.
- › **Project and Workflows** – Manage your innovation project using a powerful tool combining workflow and a task list (Gantt chart).
- › **Formulation** – Formulate your products with a tool capable of verifying the brief requirements in real time. It automatically generates the lists of ingredients, nutritional values and costs based on the components used.
- › **Labeling** – Save precious time with the integrated labeling tool which generates the declarative list of ingredients in several languages and a selection of regional formats. It can also produce the Nutrition Facts panel in one click.
- › **Manufacturing Process** – Define your manufacturing process based on the quantities used in formulation. The tool allows you to break down the quantities used over several steps, to define the machines, parameters and documents to be used (such as SOPs).
- › **Substance Screening** – Check the compatibility of your products based on criteria from regulatory libraries defining the thresholds of substances according to the type of product, the marketing area and its use.
- › **Artwork Proofing** – Save time when checking your artwork with our comparison and annotation tool; differences are automatically detected with just the click of a button.
- › **Supplier Portal** – See your suppliers as partners helping you innovate. External partners are able to feed information and packaging data into a shared repository to save you time.
- › **Quality** – Track all the quality events occurring during the life cycle of your products: non-compliance, complaints, incorrect delivery, etc.

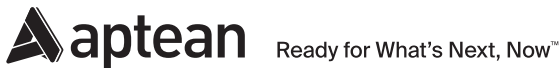


Additional Capabilities

The applications within Aptean PLM *Lascom Edition* are modular, yet completely integrated, enabling manufacturers to implement what they need today while retaining the flexibility to grow tomorrow. You can be confident our solution will scale with you as your business grows. Aptean PLM *Lascom Edition* also easily integrates with other management systems to ensure a single source of the truth.

Are you Ready to Learn More?

Contact Us at info@aptean.com or visit www.aptean.com.



About Aptean

Aptean is one of the world's leading providers of industry-specific software. Our enterprise resource planning and supply chain solutions are uniquely designed to meet the needs of specialized manufacturers and distributors, while our compliance solutions serve specific markets such as finance and life sciences. With both cloud and on-premise deployment options, Aptean's products, services and unmatched expertise help businesses of all sizes, across many industries, to scale and succeed.

For more information, visit www.aptean.com.