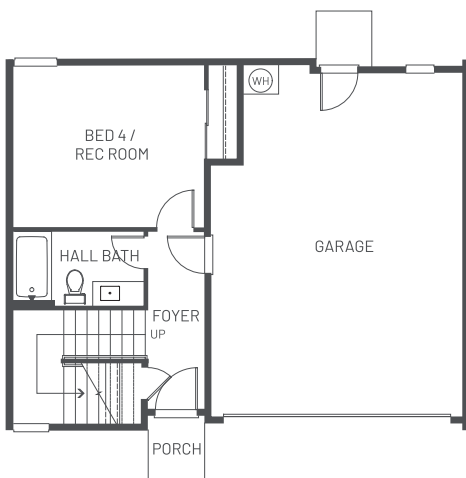




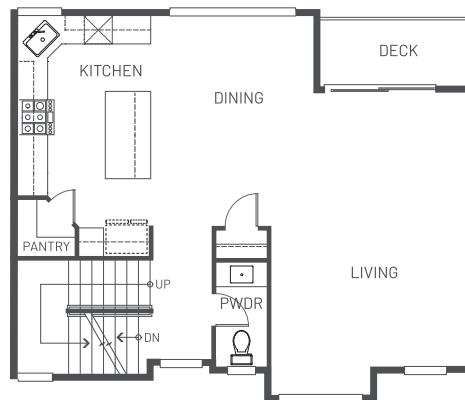
THE BRISTOL Interior Townhome

- 3 Story Townhome
- approx. 2,084 sq. ft.
- 4 Beds, 3.25 Baths
- Bed and Bath on Entry Level
- Covered Deck
- 2-Car Garage

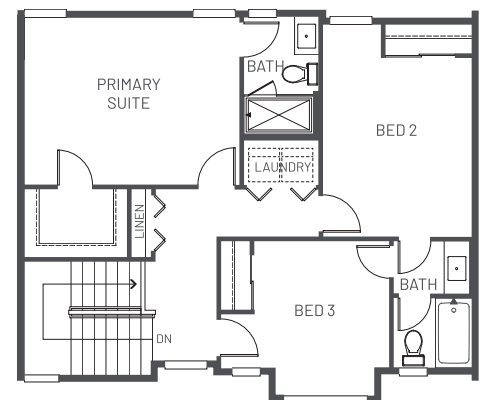
Sitting at just over 2,000 sq. ft., the Bristol is a bright, airy, modern townhome - an ideal place to call home. The living and dining rooms flow beautifully into the open kitchen featuring a large island and a spacious pantry. Sliding doors to the deck provide ample space to play and entertain. Private and sun-filled, the primary bedroom has a walk-in closet and is the perfect place to retreat and rejuvenate.



FIRST FLOOR



SECOND FLOOR



THIRD FLOOR

17417 W. MAIN STREET, MONROE, WA 98272 | SAGEHOMESNW.COM

ALEX WHITNEY : 425.260.8383 | ALEX@SAGEHOMESNW.COM

Prices, plans, and terms are effective on the date of publication and subject to change without notice. Square footage/ acreage shown is only an estimate and actual square footage/acreage will differ. Buyer should rely on his or her own evaluation of useable area. Depictions of homes or other features are artist conceptions. Hardscape, landscape, and other items shown may be decorator suggestions that are not included in the purchase price and availability may vary. © 2022 Sage Home Northwest ®

