

WOODBERRY

THE CYPRESS

2,690 SQ.FT. | 3 BEDROOMS | 2.25 BATHS

Welcome home to the Cypress. At approximately 2,700 square feet, this 3-bedroom plus office home checks all the boxes. From the covered front porch to the spacious main floor office, light and bright living room with cozy fireplace and vaulted ceilings, and primary suite on the main level with a giant walk-in closet, this home is sure to please. If the main floor wasn't incredible enough, upstairs you will find a loft/study along with two more bedrooms and shared bath, a great additional office space or guest retreat.



A



B

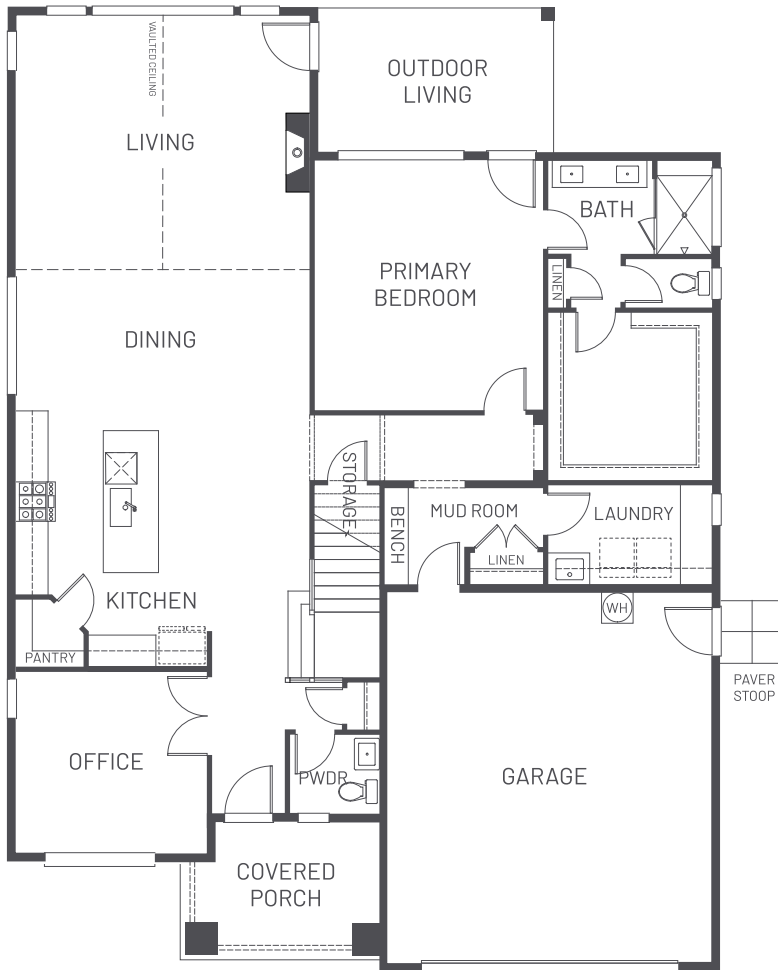


9000 SEMIAHMOO PKWY, BLAINE, WA 98230 | SAGEHOMESNW.COM

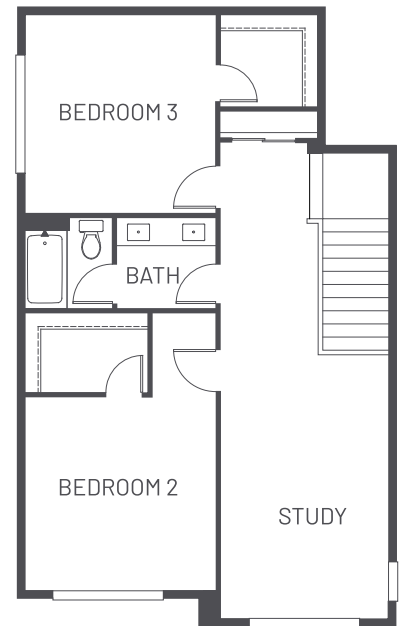
BRIAN SOUTHWICK : 360.815.6638 | JIM KAEMINGK JR. : 360.224.5465

THE CYPRESS

2,690 SQ.FT. | 3 BEDROOMS | 2.25 BATHS



MAIN FLOOR



UPPER FLOOR

