

WOODBERRY

THE DOUGLAS

3,029 SQ.FT. | 4 BEDROOMS | 2.5 BATHS

The Douglas is just over 3,000 square feet and features a formal dining room/parlor, a large kitchen with oversized pantry, breakfast nook, and generously sized living room perfect to sit back, relax, and unwind. The primary suite is a retreat of its own with a large soaking tub, walk in shower, and spacious closet. A home office or additional bedroom on the main floor, plus 3 more bedrooms and a loft ensures you have all the room you need in this exceptional home.

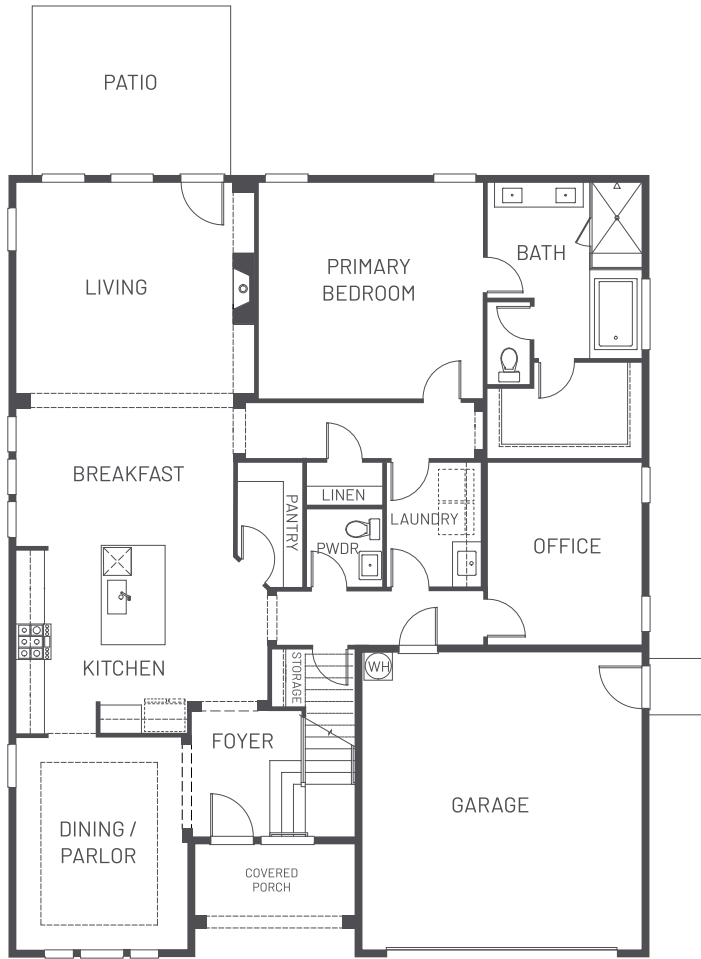


9000 SEMIAHM00 PKWY, BLAINE, WA 98230 | SAGEHOMESNW.COM

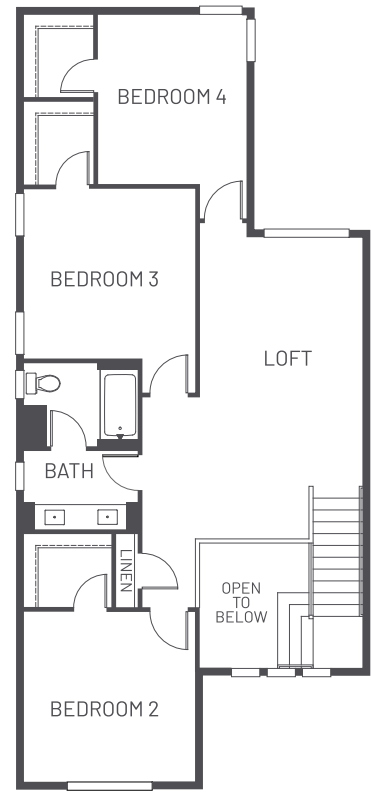
BRIAN SOUTHWICK : 360.815.6638 | JIM KAEMINGK JR. : 360.224.5465

THE DOUGLAS

3,029 SQ.FT. | 4 BEDROOMS | 2.5 BATHS



MAIN FLOOR



UPPER FLOOR

