

# WOODBERRY

## THE ALDER

2,454 SQ.FT. | 4 BEDROOMS | 2.75 BATHS

At just under 2,500 square feet, the Alder floorplan is sure to please. The cozy covered front porch is the perfect place to sit and watch the sunrise while you sip your morning coffee. Open concept kitchen, dining and living room with gas fireplace provides plenty of room to entertain comfortably. The spacious primary suite on the main floor is tucked conveniently towards the rear of the home and boasts an oversized bath with dual vanities, large shower, and walk in closet. A second bedroom, office and laundry complete the main floor, while upstairs you will find another two bedrooms and hall bathroom perfect for guests or extended family.

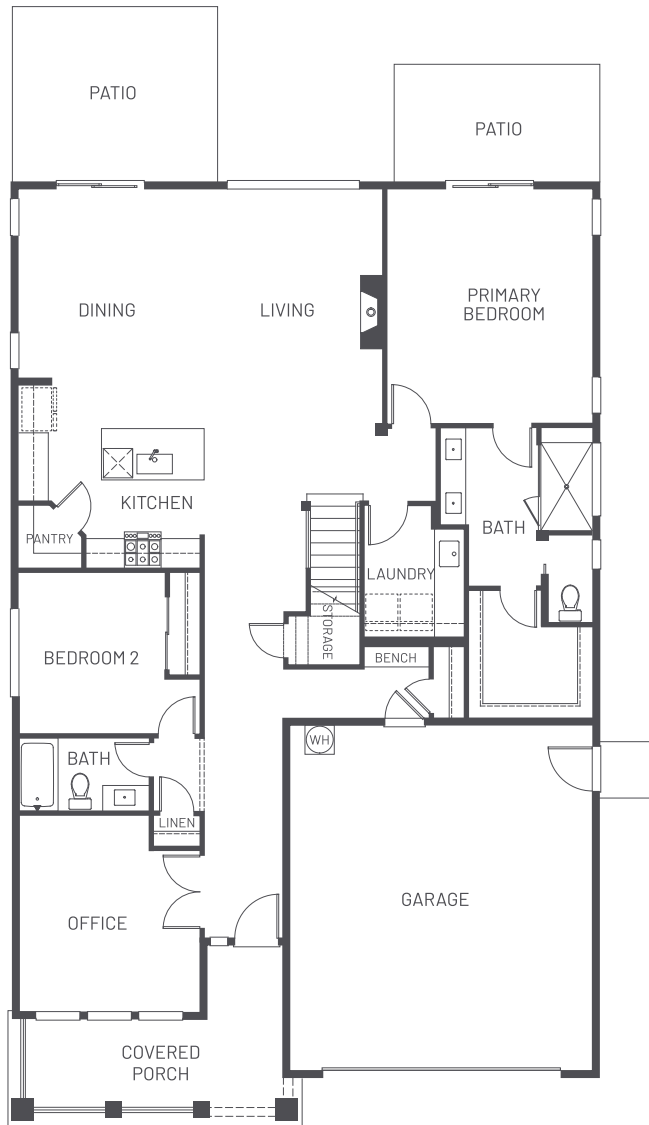


9000 SEMIAHMOO PKWY, BLAINE, WA 98230 | SAGEHOMESNW.COM

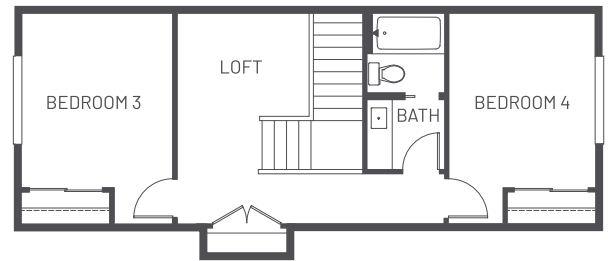
BRIAN SOUTHWICK : 360.815.6638 | JIM KAEMINGK JR. : 360.224.5465

## THE ALDER

2,454 SQ.FT. | 4 BEDROOMS | 2.75 BATHS



MAIN FLOOR



UPPER FLOOR

