

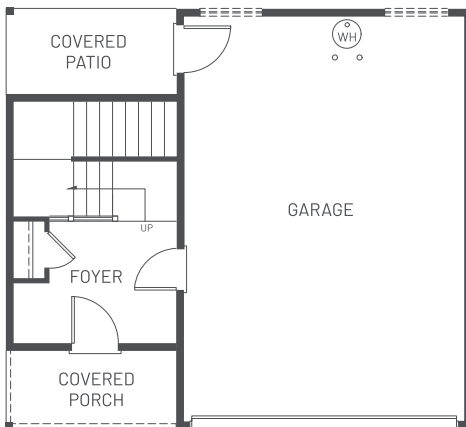


THE PELLI

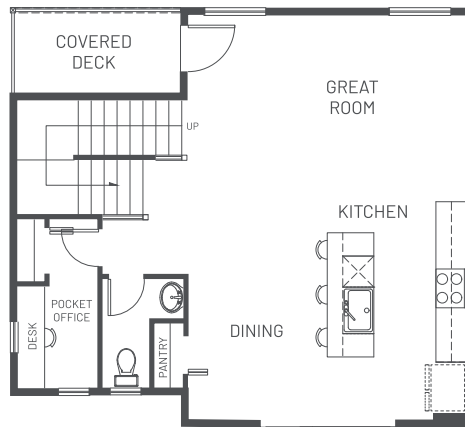
Exterior Townhome

- 3 Story Townhome
- approx. 1,706 sq. ft.
- 3 Beds, 2.25 Baths
- Pocket Office on Main Level
- Covered Deck
- 2-Car Garage

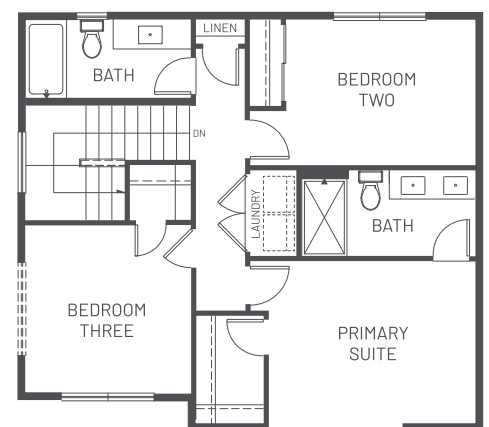
With 3 bedrooms, 2.25 bathrooms, and a pocket patio, the Pelli is the townhome you've been dreaming of. Next to the 2-car garage you will find the covered patio; a perfect place to enjoy the fresh air. The spacious second floor hosts an open kitchen, a pocket office, and access to the covered deck. Private and light-filled, the primary bedroom has large windows, an en-suite bath, and walk-in closet. The ideal place to relax and rest! At just above 1,700 sq. ft., this townhome is the new standard of living.



FIRST FLOOR



SECOND FLOOR



THIRD FLOOR



Prices, plans, and terms are effective on the date of publication and subject to change without notice. Square footage/acreage shown is only an estimate and actual square footage/acreage will differ. Buyer should rely on his or her own evaluation of useable area. Depictions of homes or other features are artist conceptions. Hardscape, landscape, and other items shown may be decorator suggestions that are not included in the purchase price and availability may vary. © 2022 Sage Home Northwest ®