

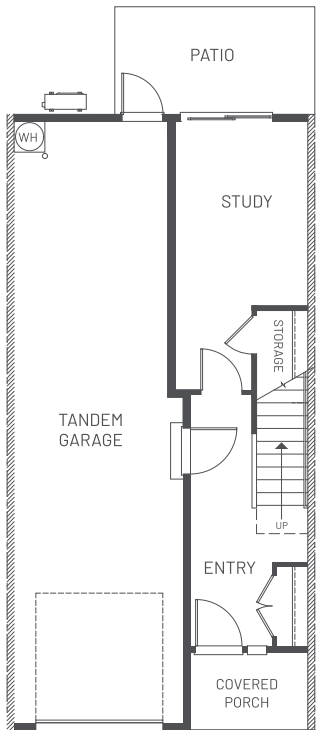


THE RENZO

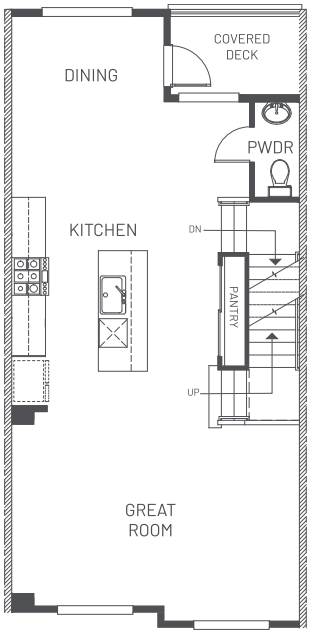
Interior Townhome

- 3 Story Townhome
- approx. 1,886 sf
- 3 Beds, 2.25 Baths
- Study with Large Walk-Out Patio
- Covered Deck
- 2-Car Tandem Garage

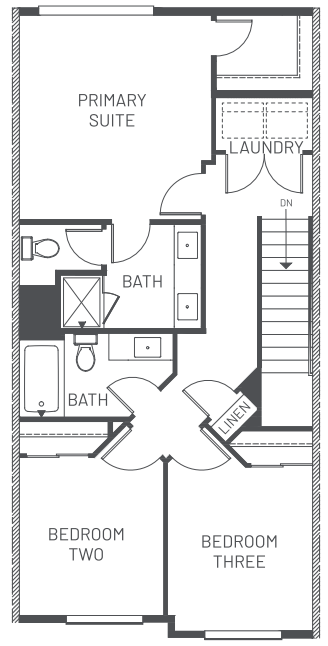
Sitting at just over 1,860 sq. ft., the Renzo is a bright, airy, and modern townhome. Next to the 2 car tandem garage sits a private study, the perfect place to catch up on work or enjoy the fresh air on the patio through the sliding doors. The great room flows beautifully into the open kitchen featuring a large island and a spacious pantry. Sliding doors to the covered deck provide ample space to play and entertain. Private and sun-filled, the primary bedroom has a walk-in closet and is the perfect place to retreat and rejuvenate.



FIRST FLOOR



SECOND FLOOR



THIRD FLOOR

Prices, plans, and terms are effective on the date of publication and subject to change without notice. Square footage/acreage shown is only an estimate and actual square footage/acreage will differ. Buyer should rely on his or her own evaluation of useable area. Depictions of homes or other features are artist conceptions. Hardscape, landscape, and other items shown may be decorator suggestions that are not included in the purchase price and availability may vary. © 2022 Sage Home Northwest ®

