



# Congressional District Health Dashboard

Trusted Health Data About Congressional Districts Fueling Policy Efforts to Improve Health

Launch Webinar

January 25, 2023



# Webinar Overview

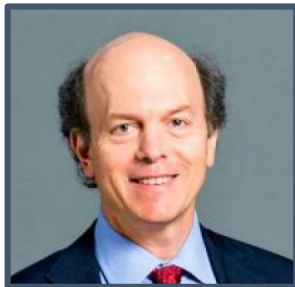
- Welcome and Introduction
- Introducing the Congressional District Health Dashboard
- Using the Dashboard to Drive Policy Change
- Q&A

# Session Speakers



**Dr. Giridhar Mallya**

Senior Policy Officer,  
Robert Wood  
Johnson Foundation



**Dr. Marc Gourevitch**

Primary Investigator,  
Congressional District  
Health Dashboard

NYU Grossman  
School of Medicine



**Andrew Hu**

Director, Bipartisan  
Policy Center Action



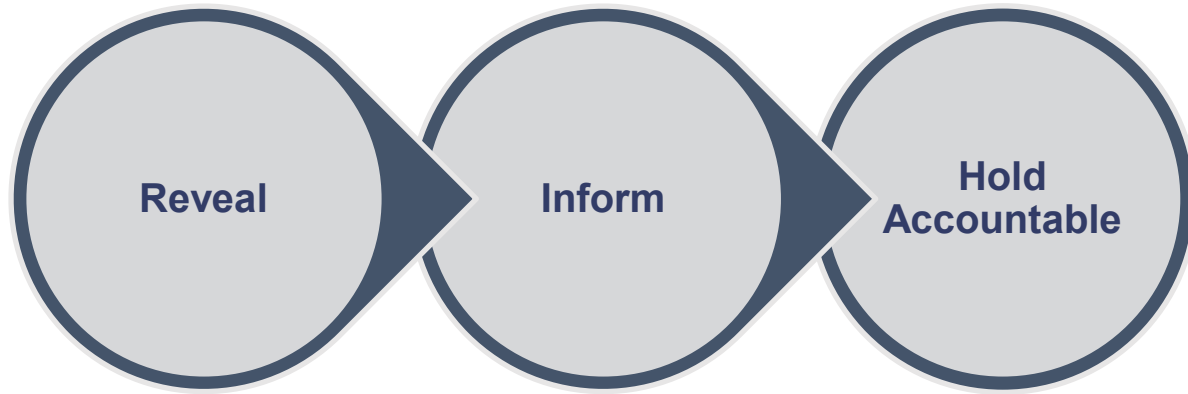
**Carolyn Mullen**

Senior Vice President of  
Government Affairs and  
Public Relations,  
ASTHO

# Housekeeping

- Webinar is being recorded and will be shared later
- Use the “raise your hand” feature if you are having technical difficulties such as no audio and we’ll send you a chat
- Use the chat feature to share questions or comments
- All participants are muted

# The Power of Data



# Introducing the Congressional District Health Dashboard

Exploring the data, features, and findings of the CDHD

**Dr. Marc Gourevitch**

Primary Investigator,  
Congressional District Health Dashboard  
NYU Grossman School of Medicine

# Introducing the Dashboard

**Challenge:** Until now, rigorous, non-partisan data on health and conditions that affect health have not been widely available at the congressional district level.

# Introducing the Dashboard

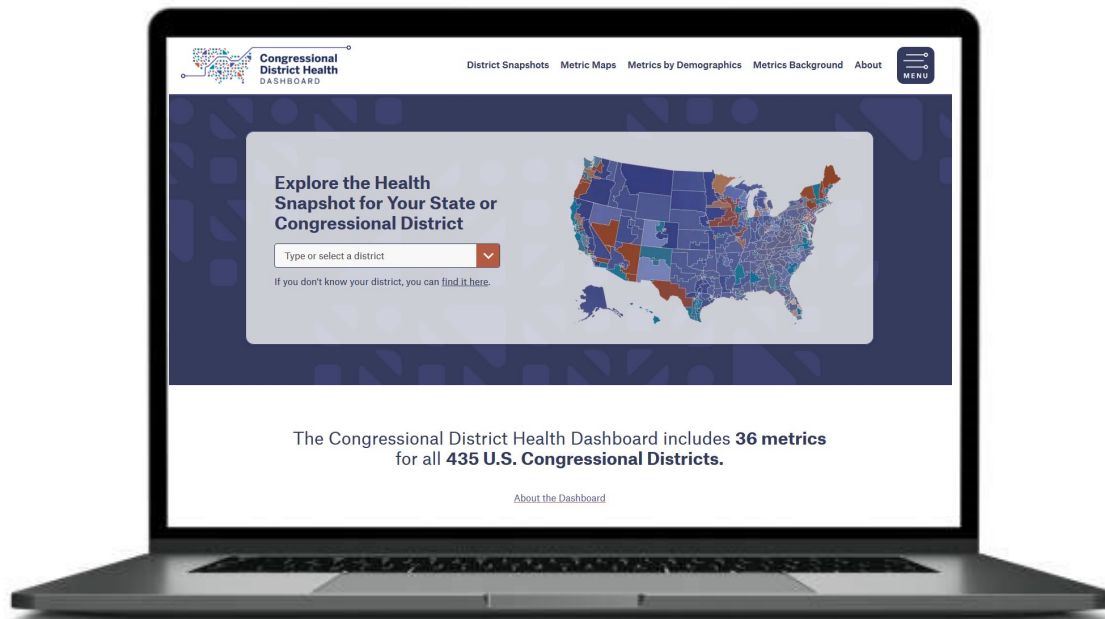
**Goal:** Provide granular data at district level – straightforward and unbiased – to help inform and catalyze priority-setting.



# Introducing the Dashboard

**Audiences:** Elected officials and their staff, advocates, journalists, researchers, media and the general public.

- Build on our experience developing and leading the City Health Dashboard



[www.CongressionalDistrictHealthDashboard.org](http://www.CongressionalDistrictHealthDashboard.org)





## Health Outcomes

Breast cancer deaths ▴  
Cardiovascular disease deaths ▴  
Colorectal cancer deaths ▴  
COVID Local Risk Index  
Diabetes  
Firearm homicides ▴  
Firearm suicides ▴  
Frequent mental distress  
Frequent physical distress  
High blood pressure  
Life expectancy  
Low birthweight ▴  
Obesity  
Opioid overdose deaths ▴  
Premature deaths (all causes) ▴



## Social & Economic Factors

Broadband connection  
Children in poverty ▴  
High school completion ▴  
Income inequality  
Neighborhood racial/  
ethnic segregation  
Racial/ethnic diversity  
Rent burden  
Unemployment ▴



## Health Behaviors

Binge drinking  
Physical inactivity  
Smoking  
Teen births ▴



## Physical Environment

Air pollution – particulate matter  
Housing with potential lead risk  
Lead exposure risk index  
Limited access to healthy foods ▴



## Clinical Care

Dental care  
Prenatal care ▴  
Preventative services, 65+ ▴  
Routine checkups, 18+  
Uninsured ▴

Those shown with a "▴" have demographic breakdowns available (pending large enough racial/ethnic groups within the district).

# Live Site Demo

# Dashboard Findings and Examples

Find a State or Congressional District

Type to find a state or district

METRIC  
Broadband Connection

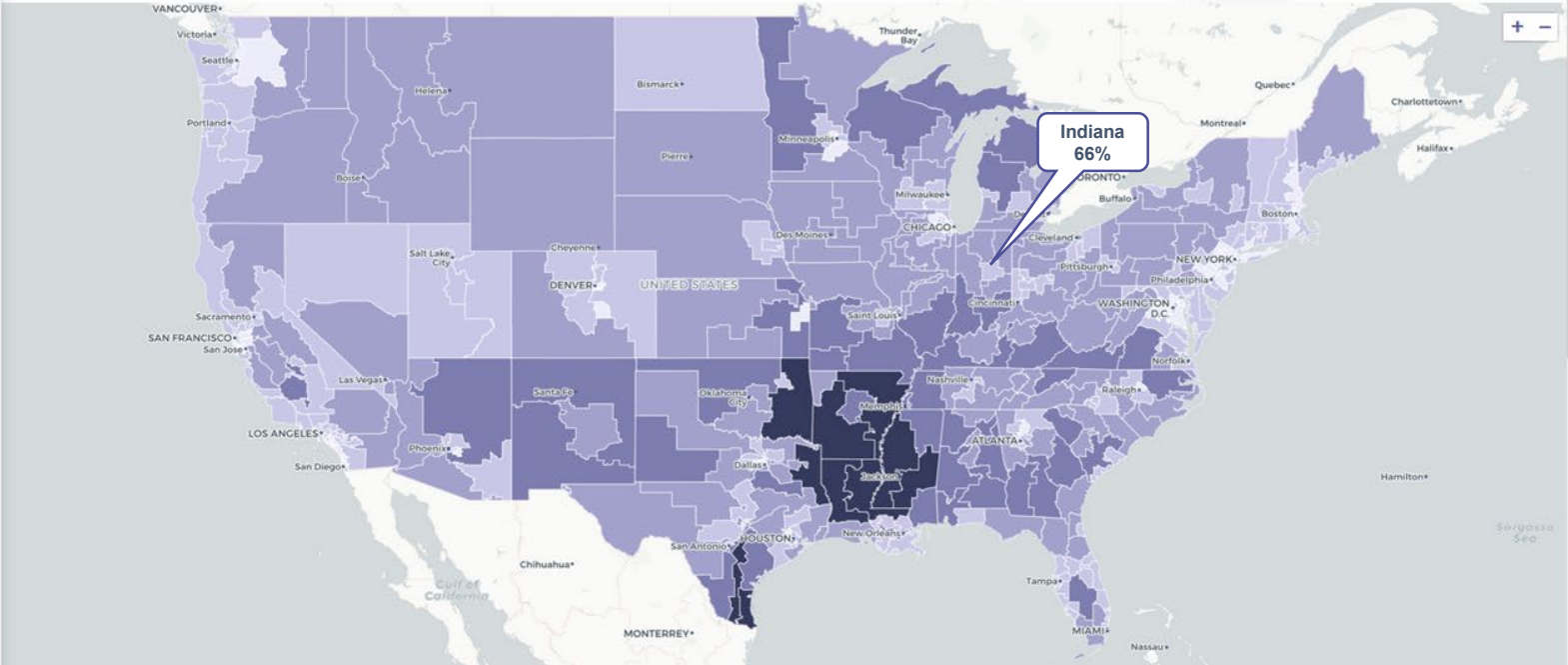
Percentage of households with high speed broadband internet connection (cable, fiber optic, DSL)

Change Metric

METRIC YEAR  
2020

 [Tips & Cautions for Using the Data](#)

The **United States** had an estimated **70.5%** of households with high speed broadband internet in **2020**, as an average of all congressional districts.



# Metric Map of Indiana Congressional Districts

## Find a State or Congressional District



### METRIC

## Broadband Connection ?

Percentage of households with high speed broadband internet connection (cable, fiber optic, DSL)

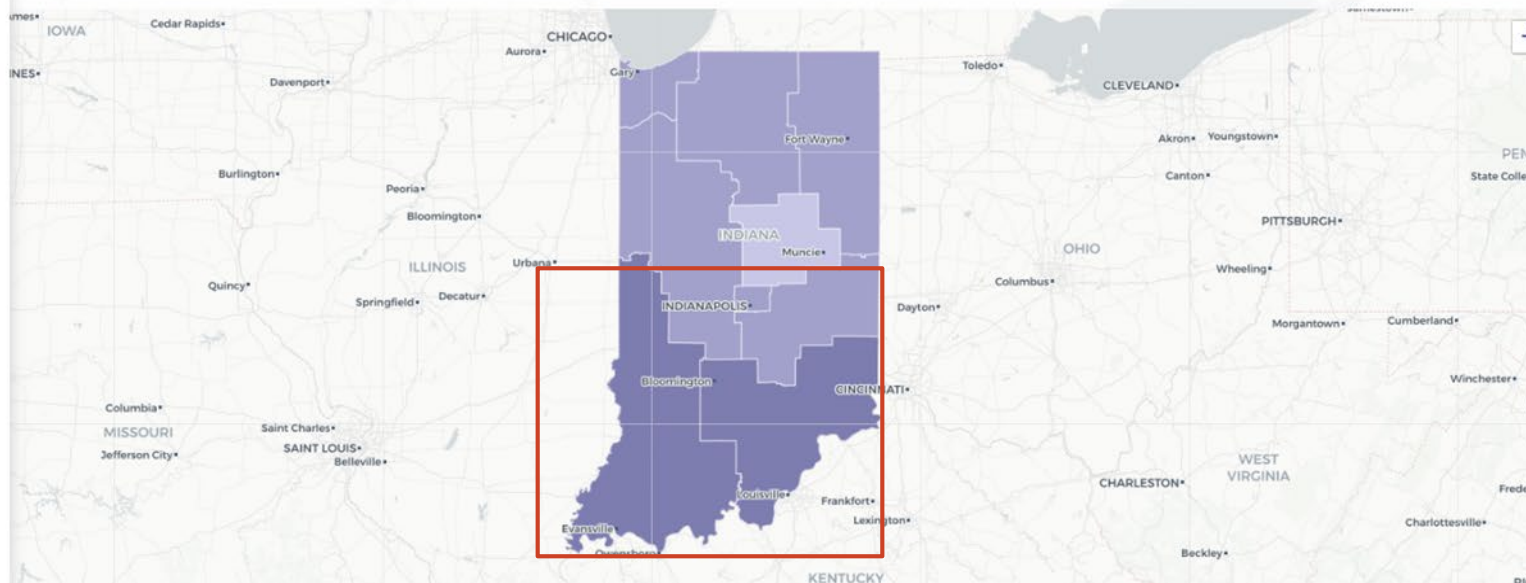
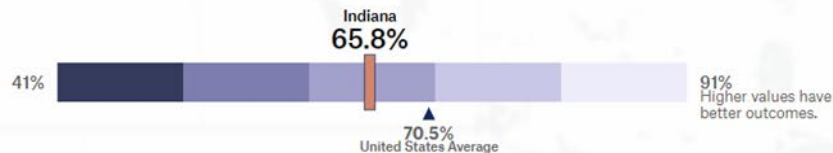
[Change Metric](#)

### METRIC YEAR

2020

[Tips & Cautions for Using the Data](#)

Indiana had an estimated **65.8%** of households with high speed broadband internet in **2020**, compared to the national average of **70.5%**.



## Find a State or Congressional District



METRIC

### Low Birthweight ?

Percentage of live births with low birthweight (<2500 grams)

Change Metric

METRIC YEAR

2020



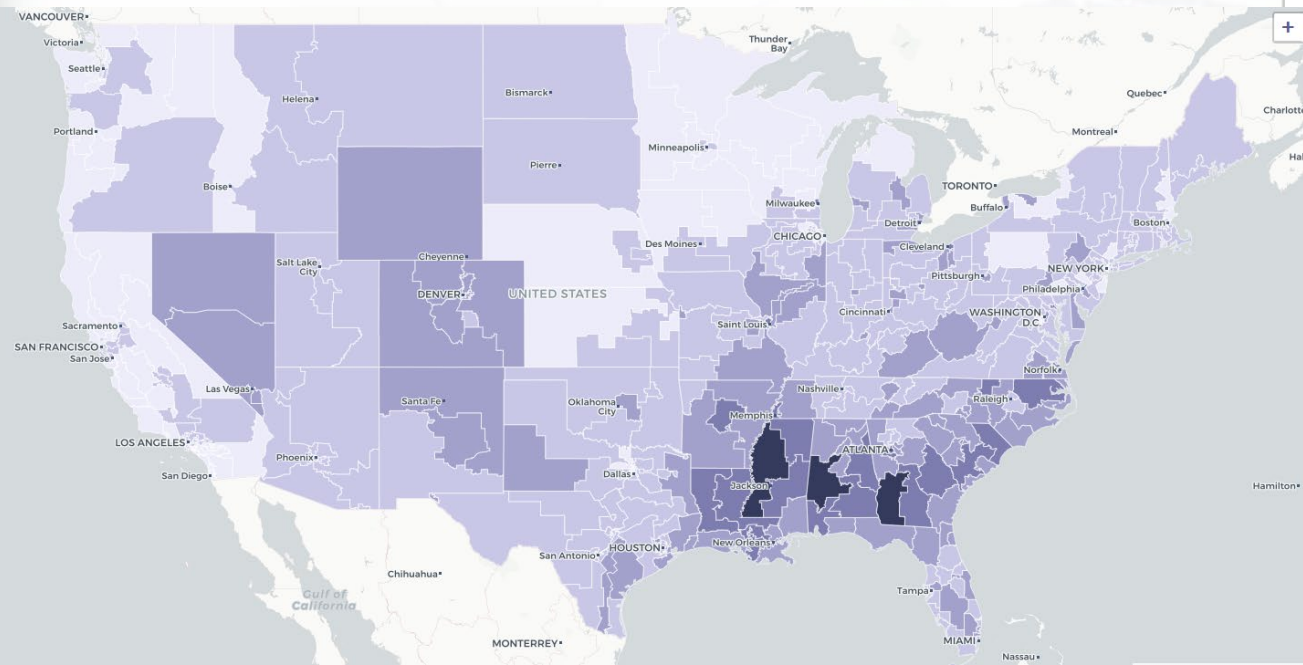
Tips & Cautions for Using the Data

The **United States** had an estimated **8.2%** of live births that were low birthweight in **2020**, as an average of all congressional districts.

5%  
Lower values have better outcomes.

▲  
8.2%  
United States Average

14%





# Metrics by Demographics for the South Carolina 2nd



## Find a Congressional District

Type or select a district



METRIC

## Low Birthweight ?

Percentage of live births with low birthweight (<2500 grams)

Change Metric

METRIC YEAR

2020

## Race/Ethnicity Breakdown for Low Birthweight in the South Carolina 2nd, 2020

Lower values represent better outcomes.

Total



10%

Asian



9.7%

Black



14.7%

Hispanic



7.4%

White

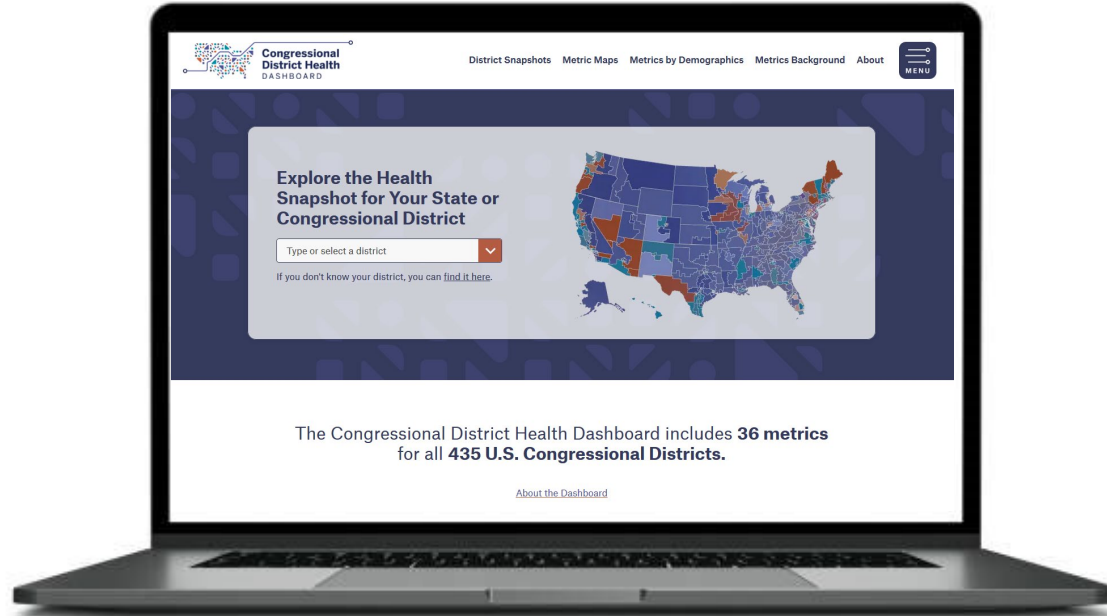


6.9%

Other



11%



[www.CongressionalDistrictHealthDashboard.org](http://www.CongressionalDistrictHealthDashboard.org)

# Moving from Data to Action

How Dashboard data can inform policy and advocacy



**Andrew Hu**

Director, Bipartisan  
Policy Center Action



**Carolyn Mullen**

Senior Vice President of  
Government Affairs and  
Public Relations, ASTHO

# Audience Q&A

# Partners

## Thank you

- The Dashboard Team
- Forum One
- Burness Communications
- Dr. SV (Subu) Subramanian,  
Harvard T.H. Chan School of Public Health

## Our Bridging Partners:

- Center on Budget and Policy Priorities
- Bipartisan Policy Center



# Stay in Touch



[info@CDhealthdashboard.org](mailto:info@CDhealthdashboard.org)



[@CDhealthdata](https://twitter.com/CDhealthdata)



[www.CongressionalDistrictHealthDashboard.org/subscribe](http://www.CongressionalDistrictHealthDashboard.org/subscribe)