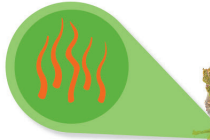


Components of cannabis flower

1. Pistils

plays a crucial role in pollination and reproduction. The pistil consists of three main parts: the stigma, the style, and the ovary. Pistils can change from white to orange, red, or brown, depending on the state of maturity.



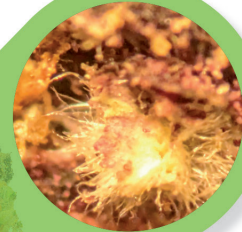
2. Glandular trichomes

can be unicellular and multicellular, and some produce cannabinoids and terpenes.



3. Cystolithic trichomes

have a characteristic bear claw shape* and may have calcium carbonate crystals (cystoliths) visible at their bases.



4. Sugar leaves

protect the plant's trichomes. Sugar leaves, like buds, contain cannabinoids and terpenes.



5. Steam

is known for its incredible strength and durability, and gives the flower firmness and support.



Definition

Trichome

Trichomes are hair-like structures and an essential component of the cannabis plant. They are responsible for the release of terpenes and flavonoids.

Cystolithic trichome

For the cannabis cultivars, the formation of cystolithic trichomes is typical. These trichomes may contain basal deposits of calcium carbonate, which appear as bright whitish spots. The white trichomes do not affect the quality of Aurora cultivars in any way.

E-Beam

E-beam treatment of the flowers avoids microbial contamination and increases product safety. Doctors should take care to use irradiated flowers to increase patient safety.

Contact

medical@auroramedicine.com

uk@auroramedicine.com

