

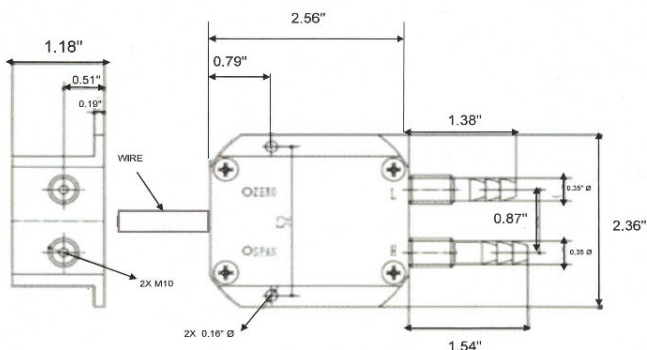


Model D600A Differential Pressure Transducer

- 0.5% BFSL Accuracy (Standard)
- Differential pressure ranges from 0-.01 BarD to 0-1 BarD
- Standard Pressure Outputs: 4-20 mA DC, 0.5–4.5VDC, 1-5 VDC, 0-5 VDC
- M12x1.5 process connection standard – contact factory for other options
- Compact design for use in measuring air pressure in HVAC, compressed air and pneumatic systems
- MEMS Technology
- Most economical differential pressure transmitter available
- 5 VDC or 24 VDC power supply options



REFERENCE DIMENSIONS:



FEATURES:

- Extremely sensitive to pressure changes
- Piezoresistive Sensing Element
- External zero & span controls
- IP65 protection
- Wiring leads standard electrical connection

Spectre Corp
7912 Root Road
Suite C/D
North Ridgeville, Ohio 44039



www.SpectreCorp.com
Phone: (440) 250-0616
Fax: (440) 353-0269
E-Mail: info@spectresensors.com



Model D600A Differential Pressure Transducer

Ordering Guide: D600A--C-(0-12"WCD)-D-5-EC1-24V

| A | (0-50PSID) | D | 5 | EC1 | 24V |
|---------------|--------------------|-----------------|-----------------|-------------------|--------------|
| PRESSURE PORT | RANGE ¹ | PRESSURE OUTPUT | ACCURACY (BFSL) | CONNECTOR | POWER SUPPLY |
| C = OTHER | PSID | D = 4-20 mA | 5 = 0.5% | EC1 = 36" PIGTAIL | 24V = 24 VDC |
| | BarD | E = 0-5 VDC | | | 5V = 5 VDC |
| | WCD | X = OTHER | | | |

¹ OTHER RANGES AVAILABLE, CONSULT FACTORY

TYPICAL APPLICATIONS

| | |
|---------------------|---------------------|
| Oil & Gas Equipment | Fuel Systems |
| Pneumatics | Building Automation |
| Labs / Metrology | HVAC |

Electrical Data

| |
|--|
| Excitation: 5VDC, 24 VDC |
| Current Consumption: < 10 mADC |
| Zero Offset: $\leq \pm 0.1\%$ of FS |
| Span Tolerance: $\leq \pm 1.0\%$ of FS |
| Output Load: >10K Ω |
| Reverse Polarity Protection: Yes |

Physical Data

| |
|-------------------------|
| Sensor |
| Wetted Material: 316 SS |
| Housing: 316 SS |
| Connections |
| Pressure: M12X1.5 |

Environmental Data

Temperature

| |
|--------------------------|
| Operating: -20°C to 85°C |
| Storage: -40°C to 125°C |

Thermal Limits

| |
|---|
| Compensated Range: 0°C to 50°C |
| Thermal Effect Zero: $\leq \pm 0.03\%$ FS |
| Thermal Effect Span: $\leq \pm 0.03\%$ FS |

Performance @ 25 °C

| |
|--|
| Accuracy: < $\pm 0.5\%$ BFSL ² |
| Stability: (1 year): < $\pm 0.25\%$ FSO, Typical |
| Differential Pressure: 0-0.01Bar to 0-1 Bar |
| Burst Pressure 3.0X FS Minimum |
| Pressure Cycles: > 50 Million |
| Temperature Range: 0°C to +50°C |
| Temperature Accuracy: $\pm 1^\circ\text{C}$ |

² Accuracy includes non-linearity, hysteresis and non-repeatability

