

Workhuman Cloud Integrations

Make your workflow Workhuman



Features

Packaged integrations for the applications your employees use daily, including Workday, Microsoft Teams, Microsoft Outlook, Slack, and Yammer

Flexible open Application Programming Interfaces (API) and iLinks so the Workhuman Cloud® can fit anywhere within employee workflows

Lightweight design that supports a common set of actions to help users stay productive and engaged with their work community

Reduces friction of users having to log in to multiple applications



Challenge

To meet the needs of dispersed, hybrid, and remote workforces, companies are adding more digital applications to keep teams connected and productive. While this helps employers be flexible, there is a risk of losing the human moments of connection employees shared in person – like saying congratulations or celebrating a birthday – which could leave them feeling lonely and isolated. Organizations need a way to integrate their digital solutions with sources of positivity and community so that employees can work efficiently and stay connected from wherever they are working.

Solution

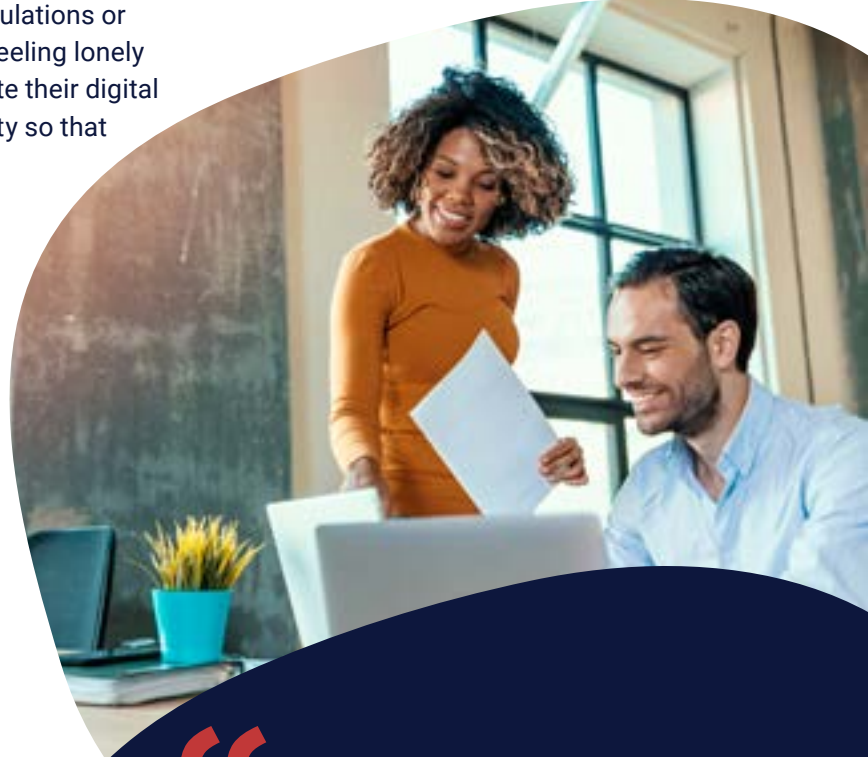
The Workhuman Cloud is the community meeting place for all employees to catalog moments of appreciation and celebration from their one-to-one interactions that may have otherwise been lost in digital workplaces. Workhuman Cloud Integrations make it seamless for employers to maximize their investment in technology and enable employees to stay connected and work together around a shared set of values that instill and reinforce culture.

With our **Workday Cloud Certified Connect** integration, you can streamline onboarding new employees into your recognition program and give them access to all Workhuman® tools right from Workday, making it easier than ever to build a culture of appreciation.

In **Microsoft Teams**, you can give recognition with the click of a button – without ever leaving the app. Employees receive the recognition in real time within Teams, too.

The **Slack** integration fosters a culture of recognition where conversation happens. Employees get award notifications, create check-ins, and send feedback within the Slack app, so they don't miss a thing.

The **Yammer** integration amplifies the positive moments happening on the Workhuman Cloud to your Yammer social feeds.



IT leaders transforming HCM must improve the employee experience by resisting 'one size fits all' solutions, and instead deploying flexible, human-centric HR processes and tools to meet diverse workforce needs.

Source: Gartner: HCM Technologies Enable Employee Experience to Support the "New Normal" of Work

Proof

Workhuman data shows that when employers recognize life events and work milestones, employees are:

3x as likely to
strongly agree they feel
connected to culture

3x as likely to
strongly agree their organization
cares about their well-being

More than 30%
more likely to say they plan to be at their
organization in five years

Reach out to your Workhuman team to build a culture of connection.

Get in touch today.

+1 888.743.6723 | workhuman.com
Read more on Customer Central: customercentral.workhuman.com

workhuman*

Join HR's leading innovators and trailblazers
at our next Workhuman Live conference.

©2023 Globoforce Limited trading as Workhuman®. All rights reserved. 2158907