

23 Haylock Ave. Elora

2,506 SQ.FT.
+ 830 SQ.FT. finished basement

Bedrooms:
4+1

Bathrooms:
3.5



*Virtual landscaping has been added and is not included with the home.
Asphalt driveway base-coat paving, sod and grading may not be completed at time of closing.

\$1,449,990

SOUTH  RIVER



Your Designer Home Awaits

MOVE-IN READY

Expertly designed and curated by our Interior Design Team at Granite Homes, this home comes with the benefits of quick occupancy, a functional floor plan and premium features and finishes.



*Furniture and accessories not included

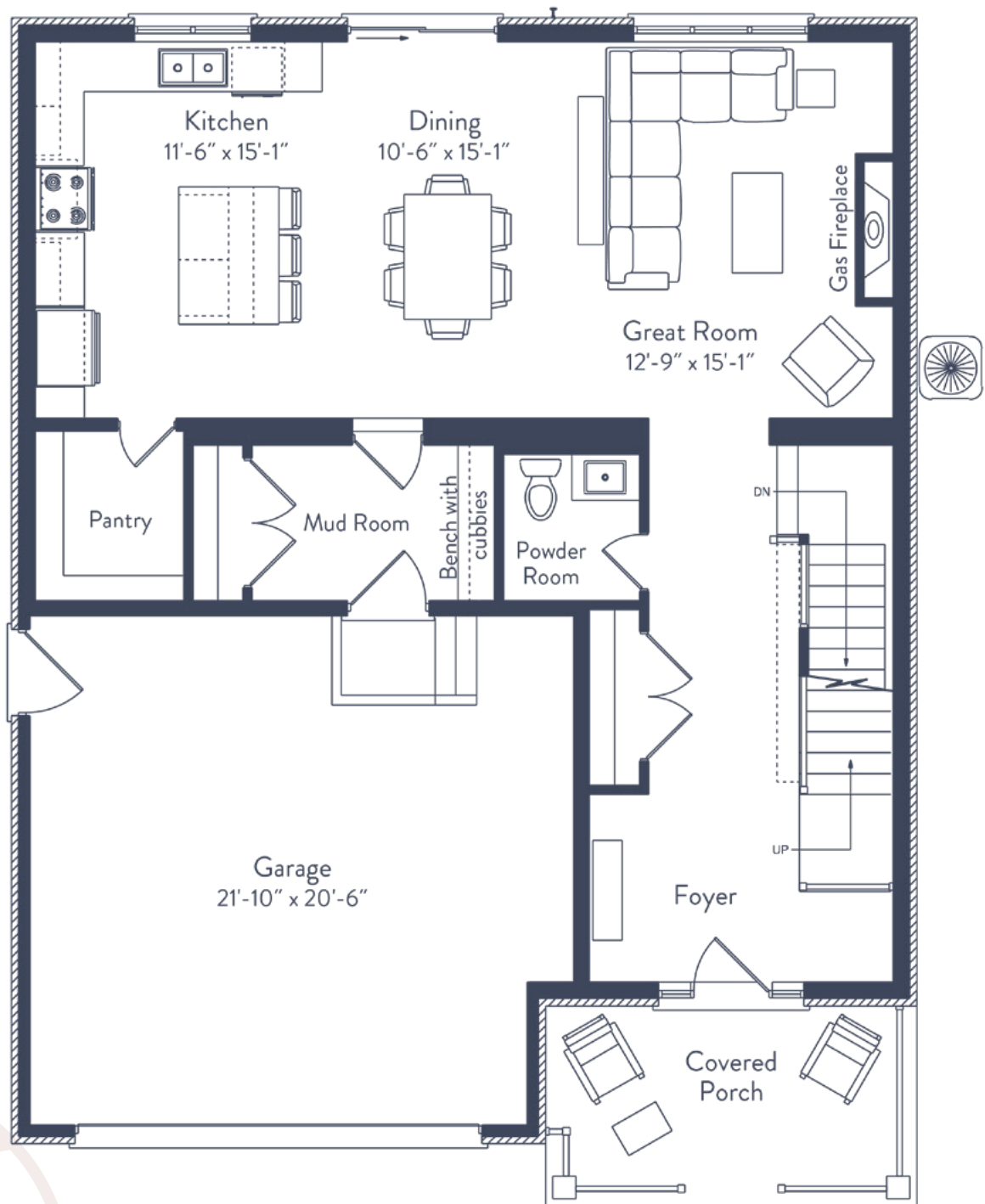
Designer Homes provide the benefits of a new home, without the wait.



*Furniture and accessories not included

Floor Plan

MAIN FLOOR

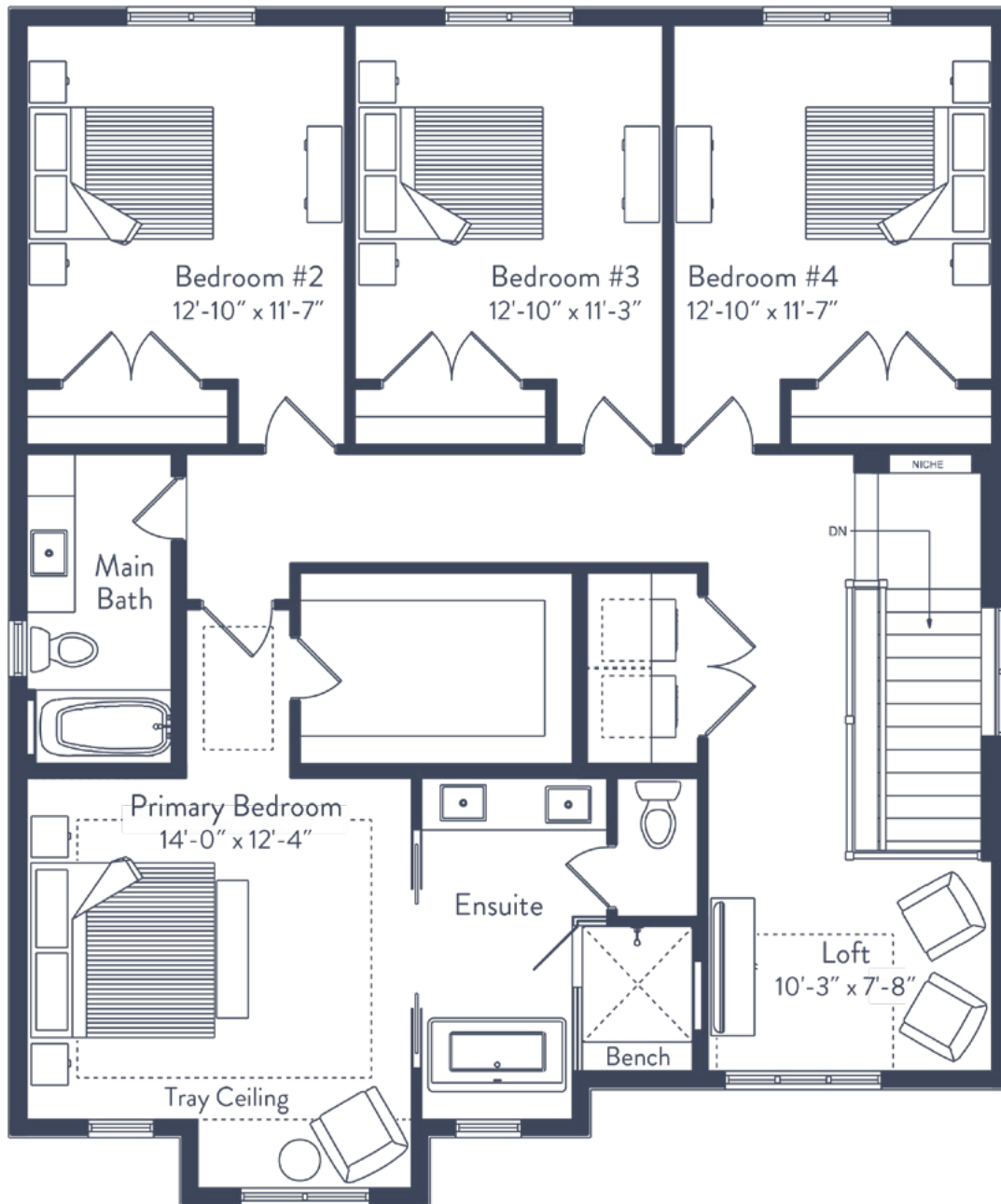


MAIN FLOOR HIGHLIGHTS

- 9' ceilings throughout the main floor
- Wide plank engineered hardwood floors
- Hickory hardwood stairs with black iron pickets
- Full appliance package in kitchen with a walk-in pantry, decorative cabinet hood fan, quartz countertops and an apron-style farmhouse sink
- Linear gas fireplace within a striking 9' high buildout, clad in tongue and groove black shiplap
- Custom mudroom built-ins, featuring a bench, coat hooks and cubbies

Floor Plan

SECOND FLOOR

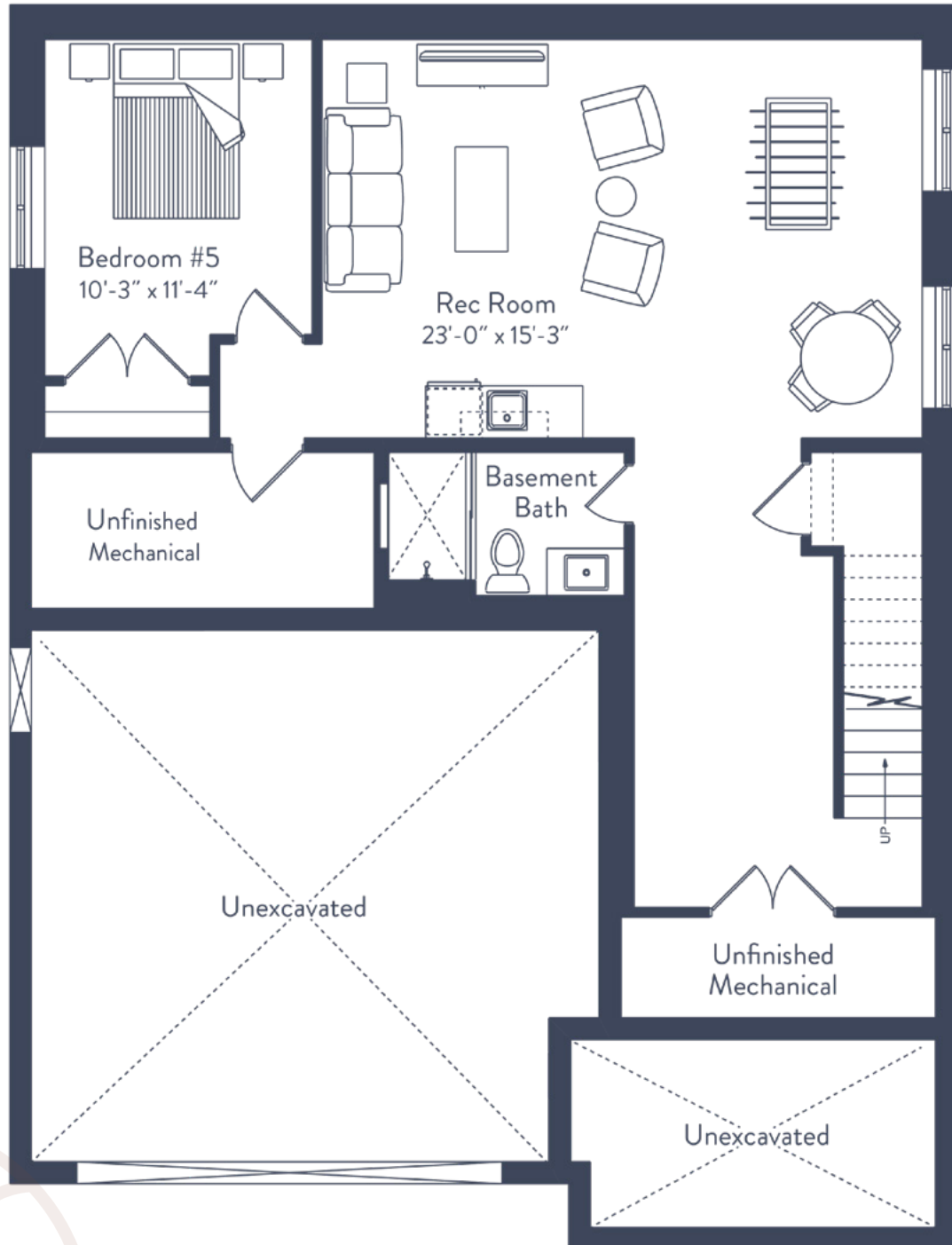


SECOND FLOOR HIGHLIGHTS

- Spacious loft with wide plank engineered hardwood floors
- Tray ceiling with rustic natural wood inlay and custom light fixtures in the primary bedroom
- Luxurious ensuite with an oversized vanity, double sinks, private water closet, custom tiled shower with built-in bench and a beautiful free-standing tub
- Side-by-side washer and dryer with quartz countertop and wall-to-wall shelf above
- Stylish main bathroom, featuring a full-height linen cabinet, decorative hexagon floor tile and quartz countertops

Floor Plan

BASEMENT



BASEMENT HIGHLIGHTS

- Oversized windows and extended ceiling height
- Custom wet bar with beverage fridge, floating shelves and accent pendant lighting
- Three-piece bathroom with tiled shower and sliding glass door
- Pot lights with dimmer switches

Features of This Designer Home

INTERIOR

- 9' ceilings throughout main floor
- Black interior windows
- Engineered hardwood throughout main floor living spaces, second floor hallway and loft
- Hardwood stairs with wrought-iron spindles from main to second floor
- Railing at basement stairs, foyer stairs and upper hallway
- Matte black interior door hardware
- Upgraded interior doors, including 8' high doors on the main floor and updated trim throughout
- Designer-selected lighting throughout with pot lights and dimmer switches
- Garden doors from dining area to backyard
- Smooth ceilings on main and second floor
- Water softener

BATHROOMS

- Powder room: floating vanity with under-cabinet lighting, quartz countertops, matte black faucet, matte hexagon floor tile and ghostwood clad ceiling
- Ensuite: free-standing tub, tiled shower with bench, water closet, matte black plumbing fixtures, herringbone floor tile and double pocket glass door entry from primary bedroom
- Main: tub and shower combination with tiled surround and shampoo niche, upgraded cabinetry with crown moulding, linen tower and custom polished edge mirror

GREAT ROOM

- Linear fireplace with black shiplap
- Oversized window

MUDROOM

- Custom built-in bench, cubbies, drawers and hooks with shiplap back panel
- Herringbone floor tile

KITCHEN

- Extended upper cabinets with crown moulding to ceiling
- Upgraded cabinetry and countertops
- Custom wood hood fan with floating shelves on either side
- Brushed gold high arc pulldown faucet
- Apron front sink
- Spacious walk-in pantry with melamine shelving and pocket door
- Oversized island with quartz waterfall and microwave shelf
- Two sets of pot drawers
- Garbage pull-out system
- Fridge with water dispenser

LAUNDRY ROOM

- Quartz countertop over included washer and dryer
- Hex floor tile

FINISHED BASEMENT

- Custom wet bar with bar sink, bar fridge, floating shelves, pendant lighting, quartz countertops, matte black bar faucet and ghostwood backsplash
- 3 piece basement bathroom with quartz countertops and walk-in tiled shower with shampoo niche and matte black plumbing fixtures
- Pot lighting and dimmer switches throughout
- Three oversize windows

EXTERIOR

- Timber columns and header over front entry
- Ghostwood inlay over front porch
- Holiday receptacle added to soffit with indoor switch
- Coach lights with 3 pot lights in second floor soffit
- Gas line for future BBQ
- Garage door opener
- Hot and cold hose bib in garage

All drawings and renderings are an artist's concept and may vary slightly from the final product. E. & O.E. Actual usable floor space may vary from stated area, and square footage has been calculated based on usable living space according to the Tarion rules. Drawings may show optional features which may not be included in the base price. Bulkheads and box outs may be required as chases for plumbing and mechanical. Location of mechanical room equipment will be located by the builder and may change based on plan. Garage man door location may vary subject to grade. Number of steps in front entry, rear entry (if applicable) and garage entry may vary based on grade. Actual finishes may differ from what is shown in rendering.

South River Site Plan



LEGEND

- Trail Network
- Fence





southriverelora.ca

SANDRA AVEIRO

519.222.3988

saveiro@granitehomes.ca

BUILT BY:

