



CENTER for
BRAINHEALTH[®]
THE UNIVERSITY OF TEXAS AT DALLAS

PEER Brain Health Study

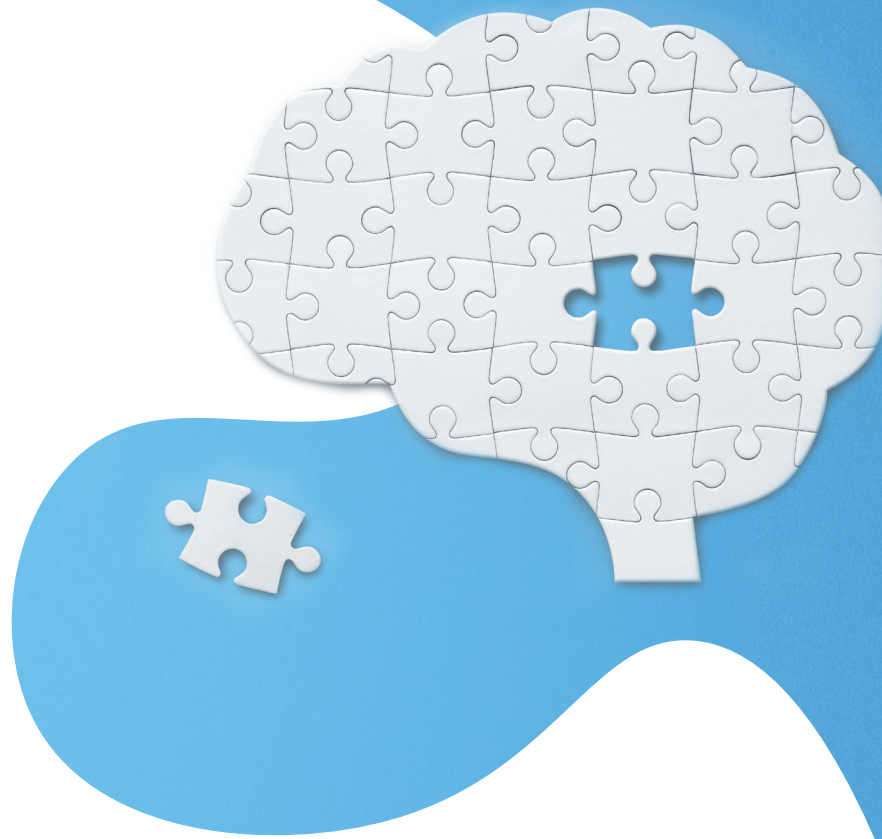
Help us understand how participating in a health program with a peer might affect the brain!

Participation Includes:

1 in-person visit involving questionnaires, peer health group, and fMRI scanning

3 required virtual follow-ups (online and phone call)

Compensation for time and travel up to \$225



Eligibility Includes:

- ✓ Speak Fluent English
- ✓ Ages 18 & 19
- ✓ Have no unremovable metal on or in body (e.g., braces or implants)



Interested in Participating?

Scan the QR Code to determine eligibility

Call: (972) 883-3360]

Email: Filbeylab@utdallas.edu

www.FilbeyLab.com

NiRD Lab
Neuroimaging of Reward Dynamics