

conSTIC 150

High-performance, adhesive metal waterstop

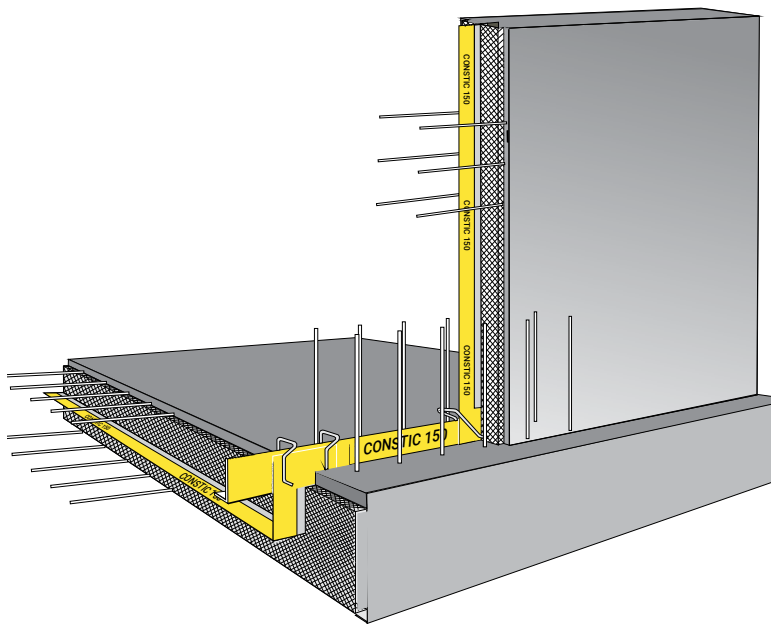
conSTIC 150

High-performance, cost-effective metal waterstop

conSTIC 150 is a metal waterstop made of galvanized sheet steel with a special elastic adhesive coating on both sides.

The special elastic coating consists of a pressure-sensitive adhesive that is activated after removing the protective foil film by concrete pressure and concrete heating and creates a permanently very strong adhesive bond between the metal and the concrete.

conSTIC 150 is intended for the use as a permanent internal seal against pressurised water for construction and control joints in walls, floors and base slabs in impermeable to water concrete constructions ("White tanking") without additional concrete upturn.



The Benefits

- Cost-effective, proven technology offering great value
- Flexible, multi-purpose product suitable for sealing in a variety of situations (horizontally and vertically useable)
- Pressure sensitive adhesive bond technology
- Extremely strong adhesive bond to concrete
- Elastic, non rigid coating
- High safety/reliability from adhesive overlap
- Straightforward on-site application – simply remove foil film to activate adhesive
- No additional kicker in base slab to wall joint required
- Embedment depth in concrete at least 3 cm
- Tested for joint expansion of up to 1.0 mm at 5 bar water pressure with 3 cm embedded depth
- Suitable for the use in changing water levels
- General building authority test certificate (abP)

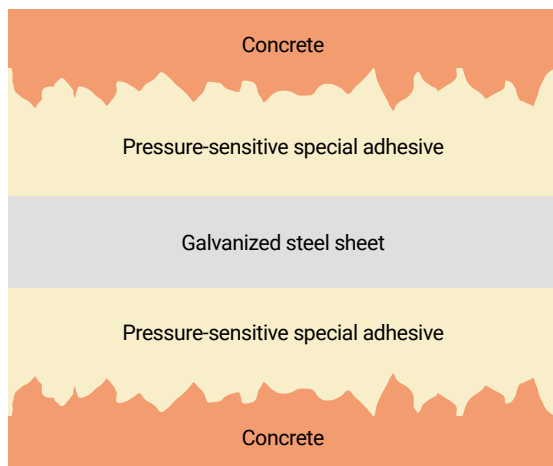
Application

conSTIC 150 provides long-lasting internal waterproofing of construction and control joints on structural and civil engineering projects. It is suitable for joints of up to 1mm crack width, and for protecting against penetration by both pressurized and unpressurized water. It can also be used in situations where water levels may change. conSTIC 150 is suitable for white tanking construction and installation in walls, floors and base slabs, and between different types of concrete section (base slab to wall, wall to wall, base slab to base slab, wall to floor). Typical applications are in-situ and precast concrete constructions. Many other variations of conSTIC 150 in combination with RECOSTAL® Shuttering Units are possible.

Technology

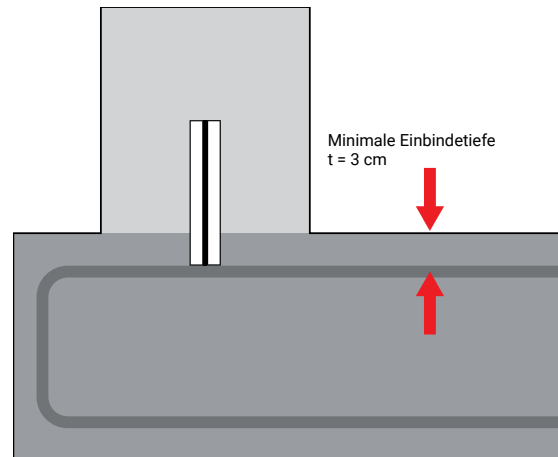
conSTIC 150 has been tested with up to 50 m (5.0 bar) hydrostatic head and, in accordance with the abP (German approval regulations), is approved for up to 20 m (2.0 bar) hydrostatic head in case of joint expansions of up to 1.0 mm with an embedment depth of the metal waterstop of only 3 cm. The use of conSTIC 150 metal waterstops is also approved for control joints in in-situ and precast concrete constructions. conSTIC 150 is also suitable and has been tested for the use in changing water levels. The self-adhesive overlaps ensure a high level of functional reliability.

Composition metal waterstop



Installation

conSTIC 150 metal waterstops are normally installed into the middle of the section of construction to be waterproofed (base slab to wall, wall to wall, base slab to base slab, wall to floor) with 5 cm wide lap joints between the individual conSTIC 150 metal waterstops.



Fold back the protective film at the respective contact points (overlaps) of the individual waterstops and press the waterstops firmly together. Fix all lap joints with related Fixing Clips for example KS23, Fixing Clips XL or Formbraces MBA23 (available separately).

If using conSTIC 150 metal waterstops are used for base slab to wall construction joint applications, they should be fixed on top of the top layer of the base slab reinforcement using Formbraces MBA23 or, alternatively, Formbraces 3/70 (at a minimum of one formbrace per metre).

Fixings have to be rigid enough to prevent the conSTIC 150 metal waterstops from moving during concrete pour. The minimum anchoring depth into the base slab or the first pour area is $t = 3$ cm.

The maximum anchoring depth in the first pour area is not to exceed half of the metal waterstop height. The protective film, which is split in the middle on both sides, must be completely removed shortly before concreting the next section. Corners and diversions are installed on site by simply bending the conSTIC 150 metal waterstops by hand.

conSTIC 150 metal waterstops with missing or damaged coating must not be used.

Technical data

- Galvanized sheet steel waterstop
- Unit length: 2000 m
- Unit height: 150 mm
- Total thickness including coating approx. 0.9 mm
- special elastic coating of pressure-sensitive elastic adhesive on both sides
- Protective film on both sides
- Color coating: transparent

Packaging unit

- Robust wooden crate containing 50x conSTIC 150 metal waterstops
- 50 pc. Fixing Clips type 100/95
- Formbrace MBA23 or Formbrace 3/70 + Fixing Clip KS23 or Fixing Clip XL available for separate order

Storage

- Store conSTIC 150 metal waterstops in their original packaging in a dry place. Protect from frost.
- Shelf-life approx. 24 months

Other conSTIC 150 variants

conSTIC 150 F

conSTIC 150 F is available with footing and holes for attachment to the reinforcement with tying wire.

Length: 2.00 m

Height: 150 mm

conSTIC 150 R

conSTIC 150 R is in roll in various lengths.

Lengths: 10 m, 15 m, 20 m

Height: 150 mm

