



## **CONTEC® Joint system for precast walls**

- CFS/CFE joint profile
- FTS/FTE joint profile
- Swelltite 3000 system

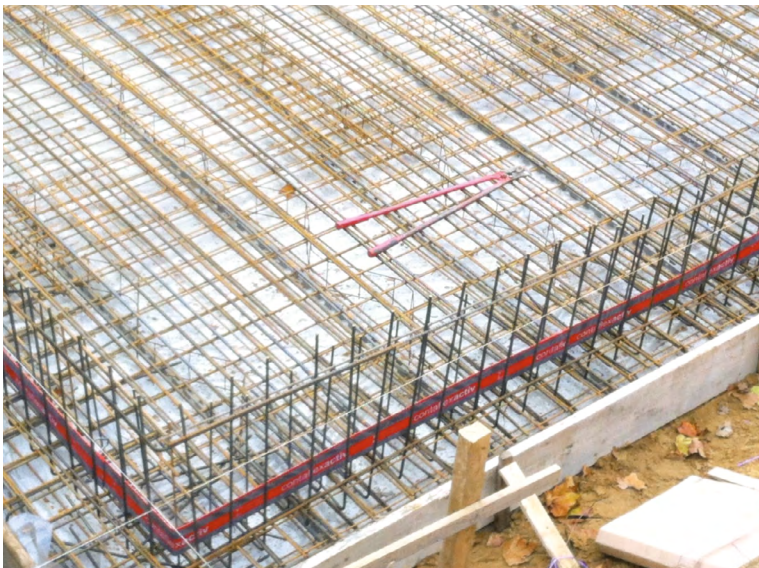
# CFS/CFE joint profile

## Internal waterproofing of precast walls

The CFS/CFE joint sealing profiles are specially designed for the application in precast walls with a core thickness of  $\geq 12$  cm and meet the high demands for effective waterproofing against hydrostatic pressure.

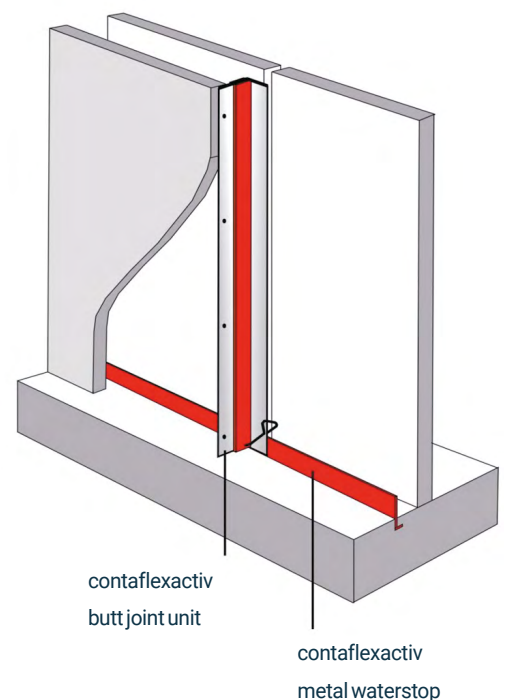
The system consists of galvanized folded profiles coated with bentonite, with excellent active sealing effect and ease of handling during installation and in providing the butt joints. The water that penetrates along the profile contacts the contaflexactiv coating and activates the swellable bentonite to form a highly impervious barrier. The joint profiles are here also continuously installed during erection of the precast double walls. The butt joints of the joint metal profiles sheets are available in 1.5 m and 1.25 m length. As active butt joints, they have overlaps of 10 cm and are fixed in place with knock-in clamps. The width of the contaflexactiv joint profile is dimensioned for an ideal ratio between the width of the concrete core and the height of the joint sheet. A special folded joint profile butt joints and corner joints is available. Contaflexactiv active metal waterstop type ACF used in the connecting joints between floor and wall. The angled stand leg ensures a straight joint sheet, to aid careful pouring and compacting the core concrete.

The coating of the metal waterstops consists of highly swelling bentonite.

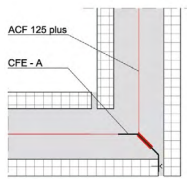
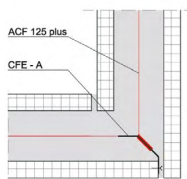
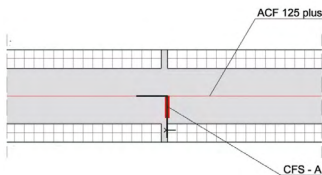
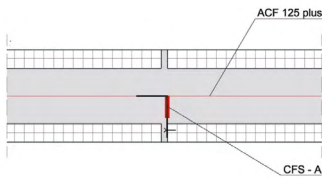


## The Benefits

- Activ bentonite sealing system
- Safe active overlaps
- Easy and fast installation
- Water pressure resistance up to 5 bar
- Tested for joint expansion of up to 0.5 mm
- General building authority test certificate (abP)







## CFS-A 250 butt joint unit

with active coating for precast walls

d= 25 cm, incl. fixing clips

L= 1.50 m

21314110

1 box = 6 units

L= 1.25 m

21314111

## CFS-A 300 butt joint unit

with active coating for precast walls

d= 30 cm, incl. fixing clips

L= 1.50 m

21314120

1 box = 6 units

L= 1.25 m

21314121

## CFE-A 250 angle joint unit

with active coating for precast walls

d= 25 cm, incl. fixing clips

L= 1.50 m

21314210

1 box = 6 units

L= 1.25 m

21314211

## CFE-A 300 angle joint unit

with active coating for precast walls

d= 30 cm, incl. fixing clips

L= 1.50 m

21314220

1 box = 6 units

L= 1.25 m

21314221

## ACF 100 plus metal waterstop

with active coating and base

b= 10.0 cm,

12242110

1 box = 10 units

L= 2.25 m, incl. 10 fixing clips

## ACF 125 plus metal waterstop

with active coating and base

B= 12.5 cm,

12242210

1 box = 10 units

L=2.25 m, incl. 10 fixing clips

Additional dimensions on request



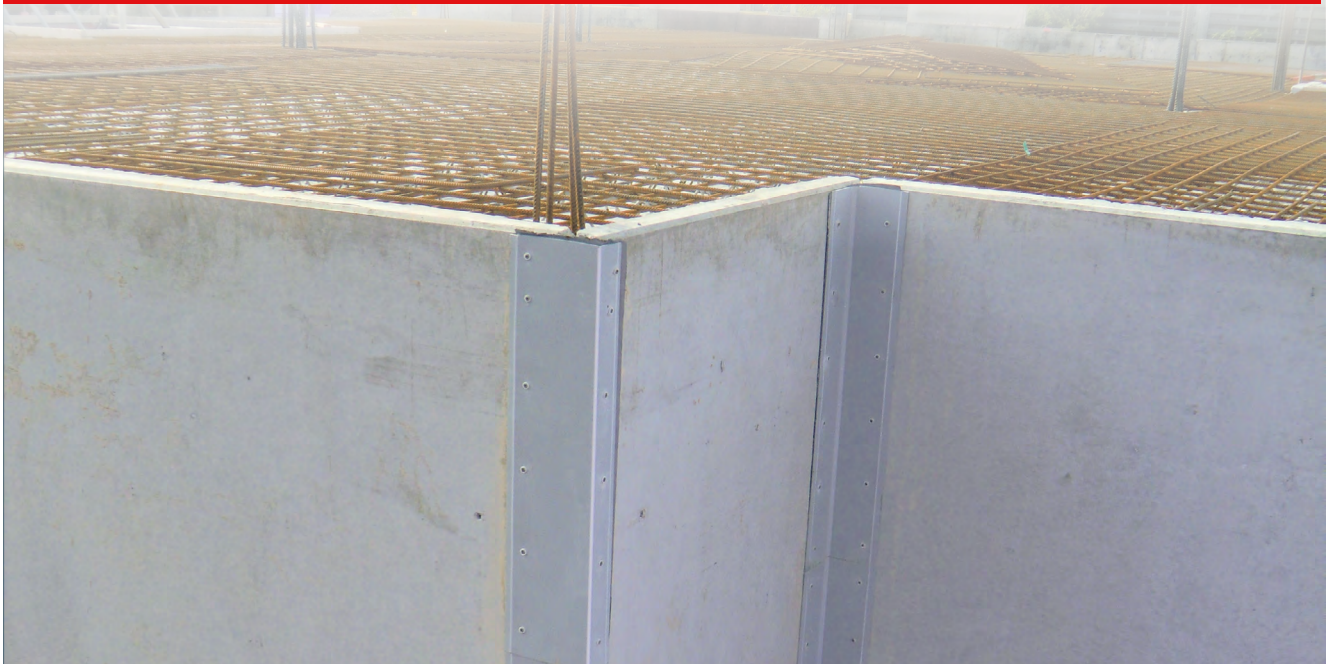
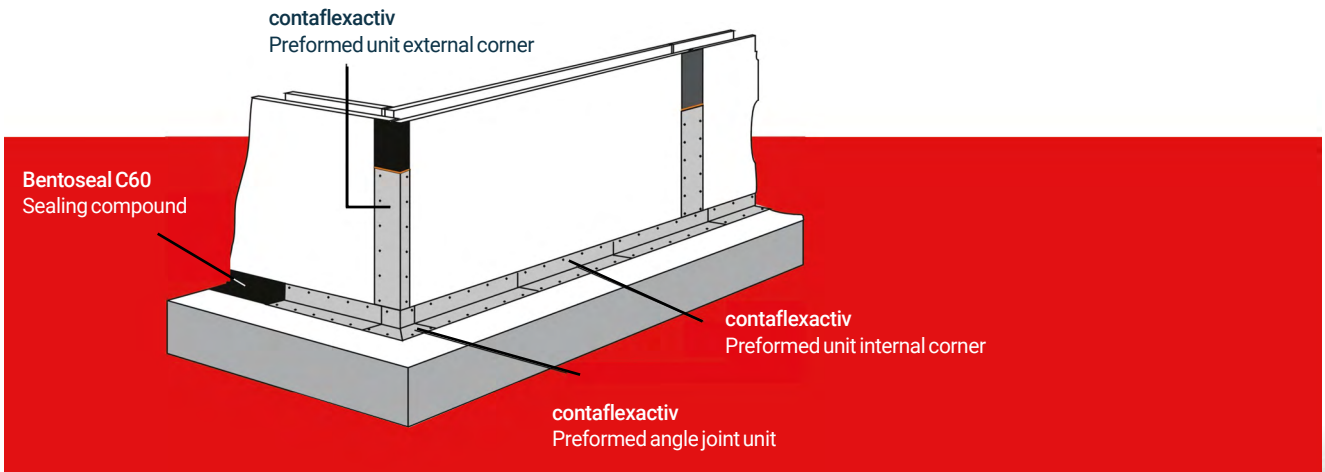
# Swelltite 3000 system

## External waterproofing of precast walls

Swelltite 3000 is a system for sealing horizontal and vertical construction and butt joints in waterproof concrete structures against hydrostatic pressure, as encountered in precast and double-wall constructions. Swelltite 3000 is attached to the outer side of double walls, where it develops its sealing effect. The bentonite, used as sealing material, here provides the system with a permanently active swelling joint seal. The ready-to-install bentonite film strips (delivered as roll material) are especially flexible to use. Other system components are Bentoseal C60 sealing compound and profiled cover sections made of stainless steel or PVC with stainless steel knock-in anchors. The system moves the sealing level to the exterior of the wall. All joint areas are covered over a width of 24 cm with highly swelling, bentonite strips which effectively prevent water from penetrating. Installation can be carried out in any kind of weather. In cases of high security standard, we recommend the installation of contaflexactiv metal waterstop.

## The Benefits

- Sealing level exterior to the wall (no water penetration into construction)
- Activ bentonite sealing system
- Easy and fast installation
- Water pressure resistance up to 2 bar
- Tested for joint expansion of up to 0.5 mm
- General building authority test certificate (abP)



# System with bentonite strips and cover plates

05



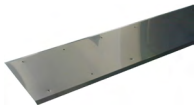
<b>Bentonite composite Swelltite 3000</b>		
Strip width b= 24 cm,	22432000	1 roll = 10 m 1 pallet = 56 rolls



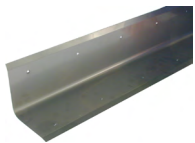
<b>Bentoseal C 60</b>		
sealing compound for levelling surfaces	22420000	1 cont. = 18 kg 1 pallet = 48 container



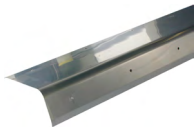
<b>Fixing Plugs <math>\varnothing</math> 6 mm</b>		
L= 35 mm stainless steel	21193150	1 box = 100 pcs.



<b>Cover plate flat</b>		
0.7 x 250 x 1000 mm, V2a	on request	1 piece
3.0 x 250 x 1000 mm, PVC	22413100	1 piece



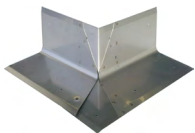
<b>Preformed unit internal wall to base slab joint &amp; internal wall to wall</b>		
0.7 x 125 x 125 x 1000 mm, V2a	on request	1 piece
3.0 x 125 x 125 x 1000 mm, PVC	22413200	1 piece



<b>Preformed unit external wall to wall</b>		
0.7 x 70 x 180 x 1000 mm, V2a	on request	1 piece
3.0 x 70 x 180 x 1000 mm, PVC	22413600	1 piece



<b>Preformed unit internal cover</b>		
V2a	on request	1 piece
PVC	22413300	1 piece



<b>Preformed unit external corner</b>		
V2a	on request	1 piece
PVC	22413400	1 piece



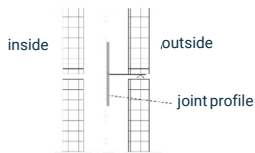


# FTS/FTE joint profile

The FTS/FTE units, as vertical butt joint profiles, are a galvanized, folded-steel sheet, both sides of which are coated with polymer bitumen over their entire surface. The butt joint profiles are continuously installed during erection of the precast double walls. The sealing profiles, attached to the wall joint of the elements and fixed in place with knock-in anchors, will then be located in the core of the double wall. A borehole grid in the joint profile facilitates installation and helps prevent errors in execution. contaflex CF or CFR metal waterstop is used in the connecting joints between floor and wall. Special profiled sections for butt joints and corner joints, as well as suitable knock-in anchors and drive clamps complete the system that is optimally suited for double walls of 25 or 30 cm. FTS/FTE units for double wall thickness > 30cm available on request.

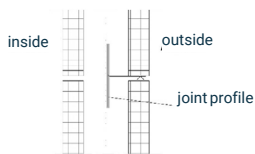
## The Benefits

- Robust water barrier
- Strong adhesive bond through bitumen coating
- Easy and fast installation
- Water pressure resistance up to 5 bar
- Tested for joint expansion of up to 2.0 mm
- General building authority test certificate (abP)



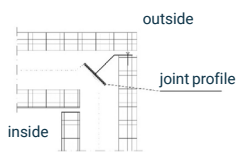
### FTS-250 butt joint unit

with contaflex coating for precast walls d= 25 cm, incl. fixing clips L= 2.50 m	21391110	1 piece
---	----------	---------



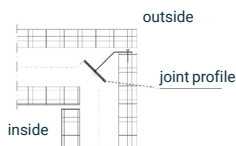
### FTS-300 butt joint unit

with contaflex coating for precast walls d= 30 cm, incl. fixing clips L= 2.50 m	21391120	1 piece
---	----------	---------



### FTE-250 angle joint unit

with contaflex coating for precast walls d= 25 cm, incl. fixing clips L= 2.50 m	21391210	1 piece
---	----------	---------



### FTE-300 angle joint unit

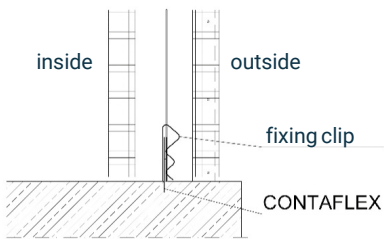
with contaflex coating for precast walls d= 30 cm, incl. fixing clips L= 2.50 m	21391220	1 piece
---	----------	---------



### FTE-165E Preformed internal corner

with contaflex coating H= 16.5 cm	21391300	1 piece
--------------------------------------	----------	---------

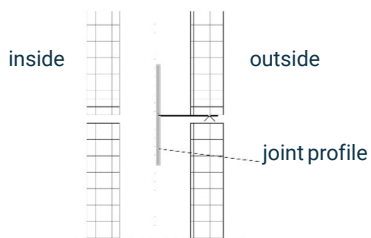
### Base slab/ Wall



### CFR 303

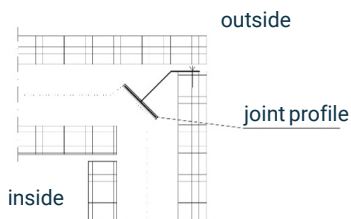
Metal waterstop with contaflex coating and additional formbrace for installation

### Wall/Wall



## FTS 250/300 butt joint profile with contaflex coating

### Wall/Wall



## FTE 250/300 corner joint profile with contaflex coating

### contaflex CFR

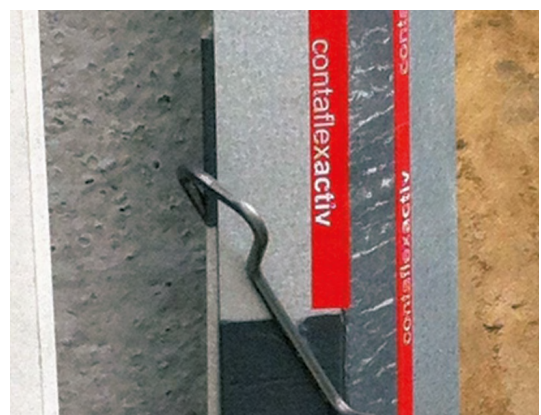


Watertight joint sealing with suitable profiled sections are an important topic in concrete construction when precast double walls are used and at interfaces between precast double walls and in-situ concrete components. The safety requirements that must be met for sealing the joints of precast double walls cannot be high enough. We offer three different sealing technologies (CFS/CFE joint profile, FTS/FTE joint profile and Swelltite 3000 system) for meeting the safety requirements, while taking into consideration the working methods of conventional construction companies. Where joint profiles of standard dimensions cannot be applied due to a special construction measure, we offer, in addition, project-related dimensions for such construction.

### CFS/CFE joint profile, FTS/FTE joint profile and Swelltite 3000 system

are tested as system by recognized testing bodies and the quality is confirmed by national technical approvals (abP). In addition, numerous inter-system tests were conducted by materials -testing institutes.

### Installation of CONTEC® joint system for precast walls



[dywidag.com](http://dywidag.com)

### Get in touch.

For local contact details, please visit our website.



© Copyright 2023 DYWIDAG. All rights reserved. Specifications subject to change without notice.

[dywidag.com/contact](http://dywidag.com/contact)