

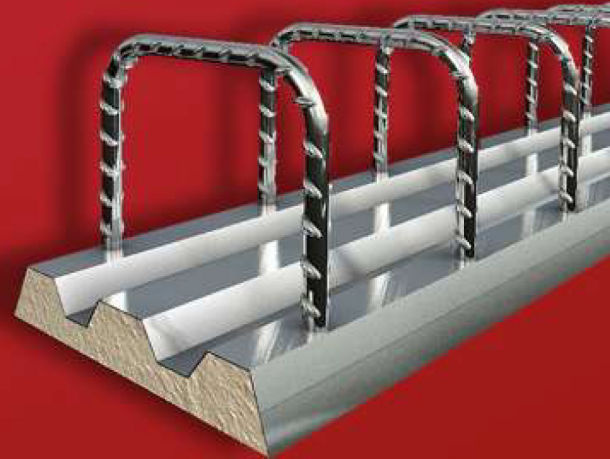
# CARES Technical Approval Report TA2 5075

Issue 1



**DYWIDAG-SYSTEMS  
INTERNATIONAL**  
recostal® RSH Key Profiled  
EC2 Starter Pack

Assessment of the  
DYWIDAG-Systems International  
recostal® RSH Key Profiled EC2  
Starter Pack Product  
and Quality System  
for Production



TECHNICAL  
APPROVAL  
5075



002

# Product

DYWIDAG-Systems  
International recostal® RSH  
Key Profiled EC2 Starter  
Pack Reinforcement  
Continuity System

## Product approval held by:

DYWIDAG-Systems International Ltd.,  
Northfield Road, Southam,  
Warwickshire,  
CV47 0FG

Tel: 01926 813980  
Fax: 01926 812273  
Email: Info@dywidag.co.uk

## 1 Product Summary

DYWIDAG-Systems International recostal® RSH Key Profiled EC2 Starter Packs consist of specially selected pre-bent reinforcement housed in a uniquely trapezoidal profiled corrosion resistant casing, this is designed to provide continuity over construction joints while providing the highest key (indented) profile at the joint according to "BS EN 1992 1-1 Eurocode 2: Design of Concrete Structures".

The unit is cast into the front face of the first concrete pouring section. After the formwork is struck, the backing is removed to reveal the starter bars inside. These legs are then bent out by the contractor and lapped onto the main reinforcement of the next pour.

The rear casing remains embedded in the first concrete pouring section, providing a trapezoidal profiled rebate into which the concrete is poured. This eliminates the need for traditional preparation at the joint. Trapezoidally profiled construction joints according to EC2 represent the highest category with regard to the transfer of shear forces.

### 1.1 Scope of Application

DYWIDAG-Systems International recostal® RSH Key Profiled EC2 Starter Pack system with bar diameters ranging from 10mm to 16mm has been evaluated in accordance with the "BS EN 1992 1-1 Eurocode 2: Design of Concrete Structures".

### 1.2 Design Considerations

DYWIDAG-Systems International recostal® RSH Key Profiled EC2 Starter Pack system product types are used in UK construction as a jointing method that requires construction sites to bend in-situ reinforcement bars.

The design recommendations in "BS EN 1992 1-1 Eurocode 2: Design of Concrete Structures." Can be applied to all aspects of this product with particular attention being paid to the sections relating to bearing stresses (8.3), anchorage (8.4) and primarily for this product (6.2.5) Shear at the interface between concrete cast at different times.



### 1.3 Conclusion

It is the opinion of CARES the DYWIDAG-Systems International recostal® RSH Key Profiled EC2 Starter Pack reinforcement continuity system is satisfactory for use within the limits stated in paragraph 1.1 when installed and used in accordance with the manufacturer's instructions and the requirements of this certificate.

*Lee Brankley*

L. Brankley  
Chief Executive Officer

September 2019

