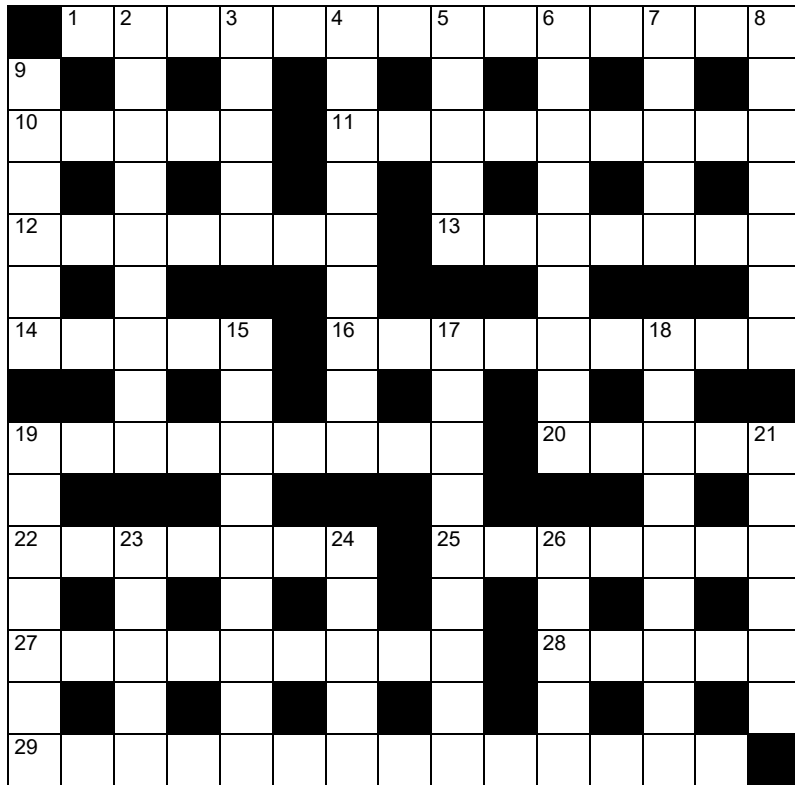


## Quick Crossword



### ACROSS

1. Inclination (14)
10. Cool (5)
11. Limits (9)
12. Fine, crisp fabric (7)
13. Release (3,4)
14. Blunder (5)
16. Surprising (9)
19. Works out (9)
20. Postpone (5)
22. Sceptical (7)
25. Echo (7)
27. Subsequently (9)
28. Trite (5)
29. Full-costume practice (5,9)

### DOWN

2. Strengthen (9)
3. Dig into (5)
4. Exceeds (9)
5. Sanctuary (5)
6. Annoyed (9)
7. Bring upon oneself (5)
8. Savings (4,3)
9. Large cutting tool (6)
15. Rebounds (9)
17. Self-confidence (9)
18. Winter illness (9)
19. Thrilled (7)
21. Conundrum (6)
23. Female relative (5)
24. Become invalid (5)
26. Sombre (5)

### Yesterday's solution

**Across:** 1. Assail, 5. Myriad, 10. Surplus, 11. Sublime, 12. Banger, 15. Resist, 16. Palaver, 17. Reek, 18. Ague, 19. Distort, 20. Data, 22. Apes, 25. Engross, 27. Tyrant, 28. Secret, 31. Crevice, 32. Initial, 33. Foment, 34. Errand.

**Down:** 2. Strange, 3. Asleep, 4. Lost, 5. Mask, 6. Robber, 7. Abiding, 8. Isobar, 9. Mettle, 13. Radiant, 14. Capture, 15. Redress, 20. Detect, 21. Torpedo, 23. Portion, 24. Settle, 25. Entire, 26. Senior, 29. Beat, 30. Aide.

## WordBuilder

How many words of three or more letters, including plurals, can you make from the five letters, using each letter only once?

No foreign words or words beginning with a capital are allowed. There's at least one five-letter word.

## R W T A H

Good 7 Very Good 10 Excellent 14

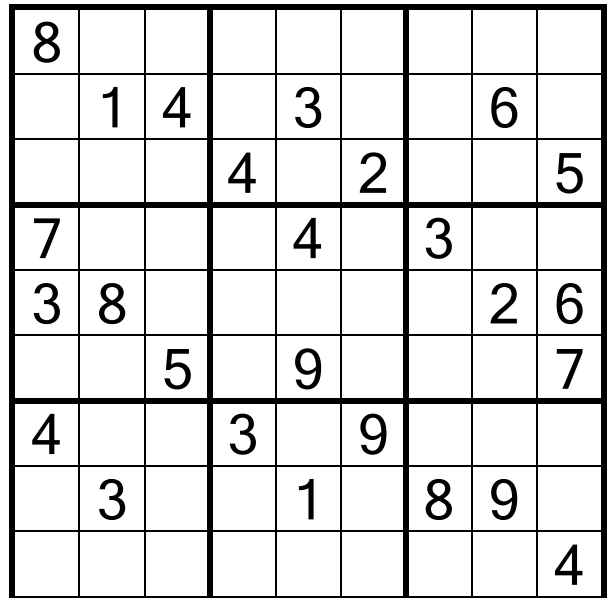


Sunday  
October 10  
2021

## Sudoku

Fill in the grid so that every row, column and 3x3 box contains the digits 1 to 9

Medium



## Simon Shuker's Mini Code-Cracker

1	2	3	4	5	1	
5				6		2
6	7	1	5	8	6	7
3		4		4		3
2	9	8	1	5	7	6
0		0				7
	9	7	0	5	7	6

Numbers have been substituted for letters. Use the letter(s) given to work out the rest of the puzzle.

**5 = P**  
**6 = R**

8	3	2	7	6	5	1	4	9
1	4	6	2	9	3	8	5	7
9	5	7	4	8	1	6	2	3
5	7	8	6	1	9	2	3	4
4	6	3	5	7	2	9	1	8
2	1	9	8	3	4	5	7	6
3	9	5	1	4	8	7	6	2
6	8	1	3	2	7	4	9	5
7	2	4	9	5	6	3	8	1

### Yesterday's solutions

C	I	R	C	U	I	T
				U		
S		R	E	D		T
E	M	U		O	R	E
E		M	E	T		E
			R			
S	E	C	R	E	T	S

able, alb, ale, amble, bale, balm, bam, beam, bel, bema, blame, elm, lab, lam, lamb, lame, lea, male, meal

Do you enjoy WordFit puzzles? Magazine available at [www.thepuzzlecompany.co.nz](http://www.thepuzzlecompany.co.nz)

