

What's On

Your bi-monthly guide to what's on at **Belong Macclesfield**

March / April 2024

Musical Moments

Fun and interactive musical workshops



We're recruiting top talent

Join our care, nursing or bistro teams



New music therapy workshops

The benefits of music as a way of connecting with people with dementia are well documented and at Belong Macclesfield, we use music extensively to bring joy and wellbeing to people's lives.

So we're delighted to announce that we will be joined by Helen Fehilty for two new music therapy workshops taking place on Wednesday 20 March and Wednesday 17 April, in The Venue from 2:30pm – 3:30pm on both dates. Helen is experienced in teaching people with Parkinson's Disease to sing in a choir and encouraging people to sing together and join in with musical challenges. The workshops are free to attend so please contact the village on 01625 508700 if you'd like to find out more, or to book.



Tombola



Try your luck in our Easter tombola, on Friday 22 March, for the chance to win a selection of prizes.

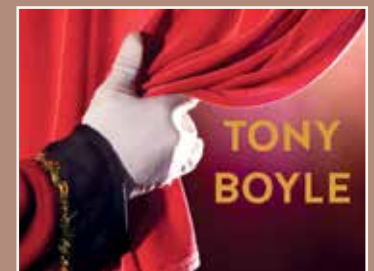


Breakfast club

Come along to our weekly breakfast club in The Bistro. We meet every Tuesday and Thursday, from 9:30am – 10:30am.

Treat yourself to something from our tasty breakfast menu, or purchase a speciality coffee, then sit back and relax amongst friends as we enjoy solving the clues to our weekly crossword. Entry is

free, so it's only the cost of a coffee or breakfast, and there's no need to book; new faces very welcome.



Sing-along

We are looking forward to welcoming back talented musician and singer, Tony Boyle, on Friday 1 March, from 2pm – 3pm. Tony will treat us to a vocal and instrumental performance covering a variety of popular and well-known songs for us to sing along to. Join us in The Venue for an afternoon of music and laughter; free entry.

Ready, steady, roll

Can you roll your egg the furthest? Find out in our fun Easter egg rolling competition on Wednesday 27 March.

Join us from 2:30pm – 3:30pm in The Venue, for the chance to be crowned this year's winner. We'll also be hosting an interesting discussion group to explore the history of Easter egg races and other Easter traditions from around the world. Come along and join in the fun; it's free and there's no need to book.



Breakfast club

Weekly crossword and breakfast club



New music therapy workshops

Connecting people through music



BELONG
MACCLESFIELD

We welcome members of the whole community

B's Café

B's Café, in Belong Macclesfield, offers a warm and welcoming space where families, friends and carers of people living with dementia

can come together with their loved ones over a lovely cup of tea or coffee and cake! The next sessions will take place on Friday 15 March and Friday 19 April, from 2pm – 4pm, in The Venue. Also on-hand, Belong Admiral Nurse Bridget Lawler, provides a dedicated dementia nurse service available through the organisation's partnership with Dementia UK. Sessions are free to attend and are open to everyone, including non-residents, so please contact the village on 01625 508700 for further details and to book.



B's Café

We're recruiting top talent

We're looking to recruit experienced support workers, as well as nurses and bistro staff. Join an organisation that believes in recognising the achievements of our colleagues, as seen in the recent celebration of our annual Champion Awards at the historic Hallé St Peter's venue in Manchester. Colleagues from Belong Macclesfield joined finalists from around the organisation to celebrate the exceptional work carried out to support older people to live an active and fulfilling life. Sound like something you'd like to be a part of? Get in touch on 01625 508700, or visit www.belong.org.uk/careers to find out more.



Congratulations to Jackie Green, Lead Hairdresser at Belong Macclesfield, who won the Made-My-Day Award 2023.

Coffee morning

Come along to our weekly coffee mornings held every Monday from 11am – 12noon in The Venue, for an opportunity to meet with friends and take part in a crossword. Cost £1, which includes a cup of tea or filter coffee and a biscuit; new faces welcome.



Belong Local



The Venue will be transformed into your friendly 'Belong Local' on Friday 8 March and Friday 12 April. Join us from 2:30pm – 3:30pm for a good old-fashioned sing-along with your favourite tittle. Entry £4.50, which includes a choice of alcoholic drinks or a soft drink and a bag of crisps. We hope you will join us.



Musical Moments

Explore your musical talents in our upcoming interactive musical workshops

with Vicky from Musical Moments. Join us in The Venue on Friday 22 March and Friday 26 of April, from 2:30pm – 3:30pm on both dates, to join in with a sing-along, games, quizzes and movement to music. Sessions are very popular and lots of fun. Come along and find out for yourself; entry is free!

Our events programme is inspired by the interests of our community. If there is anything you would like to see added, please share your ideas with our Experience Coordinator, Anna Seaton, or email: anna.seaton@belong.org.uk



For more updates of special offers and events like/follow us on Facebook and X.