

External Hotel Partners London

Academic Year 22/23
Jan 2023

- Campus Services and Procurement have agreed rates with 11 hotels in London, which are valid until 31st July 2023 (with the exception of the Dorset Square, which is valid till December 2023). The rates are available to all members of the London Business School Community. These rates are not based on last room availability, so may be closed out during peak times. In order to guarantee the rate, the reservation must be made as far in advance as possible. The increase in the amount of properties we have selected has been decided based on demand across LBS, as well as the lack of on site accommodation, due to the Bwing closure.
- Individual bookings must be directly with the hotel selected, using the relevant contact details for the property. In order to secure the corporate rate, please ensure you clearly state London Business School when contacting the property to make your reservation. Where possible, use an london.edu email address, or reference the programme and/or event you are attending.
- All bookings and rates are subject to availability and are bound by the terms and conditions in each property. All bookings should be made as far in advance as possible, as our rates may not be available during the high seasons. All rates are based on single occupancy, supplements will apply for double/ family rooms. Our rates are set for specific room categories, should these not be available, an alternative may be offered and a supplement may apply
- London Business School rates are NOT available to third party travel agents. Should a booking be made online via a 3rd party reservation/ travel site, or via an agent, the terms and conditions of the rate booked, or the specific agent terms and conditions will be applicable and you will not be eligible for any additional London Business School benefits.
- Group booking terms and conditions will apply to block reservations, particularly in relation to cancellation timeframes. During some periods group rates may be higher, subject to availability.
- All bookings that are made & are to be paid for by LBS must have a Purchase Order reference number, either LBS or CMD. Contracts must only be signed by the company paying for the booking, LBS does not guarantee as per TOM policy. Group contracts must be signed by the company that are guaranteeing/ paying for the booking.
- For further assistance, including Serviced Apartment options & alternative hotels, please contact Sam Bishop – sbishop@london.edu

2022 and 2023 will be busy years for the Hospitality industry, as events that were delayed in 2020/2021 and taking place, alongside the usual annual events.

All bookings should be made as far in advance as possible, the cancellation terms for individual bookings are 24 hours, with groups generally around 30 days (subject to size & availability), so key is to book sooner rather than later.

As our rates are not based on last room availability, should a property see their occupancy increase, they will close out all corporate rates, at which point, we will generally receive around 15% discount on the best available rate showing on the hotel's website.

Restricted availability dates could include:-

Notting Hill Carnival	28/29 August
Rugby League World Cup	15 th Oct – 19 th Nov
December	Whole month
London Marathon	30 th Sep – 2 nd Oct & 21-24 th April
London Fashion Week	16 th – 20 th September & February 2023
King Charles III Coronation	1 st May – 10 th May (actual date is 6 th , but London will be full either side)
Chelsea Flower Show	23 – 27 May 2023
London Pride	1 st July 2023
Wimbledon	3 rd – 16 th July 2023
Formula One – Silverstone	7 th – 9 th July 2023

The summer months are always busy, so last minute bookings may incur higher costs

Danubius Hotel Regents Park

Hotel Details

Rating	4*
Rooms	360
Food & Beverage outlets	3
Meeting Rooms	10
Fitness Centre	Yes
Website	www.danubiushotels.com
Distance from LBS	12 min

Rate	
Standard Room	£150
Deluxe Room	£170

Cancellation	
Groups	28 days
Individual	24 hrs

Reservations
Individual:
reservation@danubiuslondon.co.uk

Group:
group.reservations@danubiuslondon.co.uk



The Dorset Square Hotel

Hotel Details

Rating 4*
Rooms 38
Food & Beverage outlet 1
Fitness Centre No
Website
www.firmdalehotels.com
Distance from LBS 5 min

Rate (Individual)
Superior Room £275

Cancellation
Individual 24 hrs

Reservations

Individual & Group:
reservations@dorsetsquarehotel.co.uk



The Landmark London

Hotel Details

Rating 5*
Rooms 351
Food & Beverage outlets 4
Meeting Rooms 10
Fitness Centre Yes
Website
www.landmarklondon.co.uk
Distance from LBS 9 min

Rate (Individual)
Superior Room £264
Deluxe Room £288

Cancellation
Groups TBC per individual group
Individual 24hrs

Reservations
Individual:
Reservations@thelandmark.co.uk

Groups:
Event.sales@thelandmark.co.uk



Hotel Details

Rating 4*
Rooms 118
Food & Beverage outlets 2
Meeting Rooms 4
Fitness Centre Yes
Website www.holmeshotel.com
Distance from LBS 12 min

Rate
Superior Double £240

Cancellation
Groups (max 25 rooms) 30 days
Individual 24 hrs

Reservations
Individual:
reservations@holmeshotel.com

Group:
hhgroupsadmin@pphe.com



Thistle London Marble Arch (AMBA)

Hotel Details

Rating 4*
Rooms 692
Food & Beverage outlets 3
Meeting Rooms 15
Fitness Centre Yes
Website
www.thistle.com/marble-arch
Distance from LBS 20 min

Rate

Classic Room (Sep-Jun) £199
Classic Room (Jul-Aug) £260

Cancellation

Groups (TBC on size) 30 days
minimum
Individual 24 hrs

Reservations

Individual:
stay.marblearch@guoman.com
<https://www.glhhotels.com/londonbusinessschool.html>

Group:
groupsadmin@thistle.co.uk



Hard Rock Hotel London

Hotel Details

Rating	4*
Rooms	900
Food & Beverage outlets	3
Meeting Rooms	14
Fitness Centre	Yes
Website	www.hardrockhotels.com/london
Distance from LBS	25 min

Rate	
Classic Room (Sep-Jun)	£199
Classic Room (Jul-Aug)	£260

Cancellation	
Groups (TBC on size)	30 days minimum
Individual	24 hrs

Reservations

Individual:
reservations@hrhlondon.com
<https://www.glhhotels.com/londonbusinessschool.html>

Group
Groupsadmin@hrhlondon.com



Holiday Inn Regents Park

Hotel Details

Rating 3*
Rooms 339
Food & Beverage outlets 2
Meeting Rooms 9
Fitness Centre No
Website www.ihg.com
Distance from LBS 20 min

Rate
Standard Room (1-4n) £130
(5-9+ or groups) £120
Executive Room (1-4n) £155
(5-9+ or groups) £145

Cancellation
Groups 30 days
Individual 24 hrs

Reservations
Individual: reservations@hiregentspark.co.uk
Corporate Code 954299010

Groups: reservations@hiregentspark.co.uk



The Marylebone Hotel

Hotel Details

Rating 5*
Rooms 248
Food & Beverage outlets 2
Meeting Rooms 10
Fitness Centre Yes

Website

www.doylecollection.com/hotels/the-marylebone-hotel

Distance from LBS 20 min

Rate – Individual bookings

Classic Room £288
Deluxe Queen Room £384
Deluxe King Room £420

Cancellation

Groups 30 days
Individual 24 hrs

Reservations

Individual:
Marylebone_Hotel@doylecollection.com

Group:

London_events@doylecollection.com



Wilde by StayCity Paddington

Hotel Details

Rating 4* (Aparthotel)

Rooms 249

Food & Beverage outlet 1

Fitness Centre Yes

Website

www.staycity.com/wilde/london/paddington

Distance from LBS 20 min

Rate - Transient

Studio Apartment

1-7 nights £195

7-14 nights £185

14+ nights £175

Cancellation

Groups 30 days

Individual 24 hrs

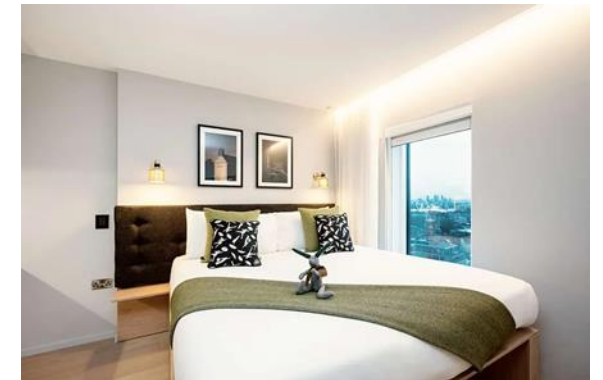
Reservations:

Individual:

wilde.paddingtonsales@staycity.com

Group:

Martin.Haymes@staycity.com



Hotel Details

Rating 4*
Rooms 239
Food & Beverage outlets 1
Meeting Rooms 4
Fitness Centre Yes
Website
www.Marriott.co.uk
Distance from LBS 35 min

Rate 15% off Best Available Rate

Cancellation
Groups 30 days
Individual 24 hrs

Reservations
Individual & Group:
Cork.regional.reservations@Marriott-service.com

Corporate Code ZLB

