



*Hair Color
Collection*



Sophisticated Soft Grege

Translucent cool grege that gives a soft and refined impression by suppressing orange and yellow with CG.





Sheer Lavender Pink

By adding a touch of blue with IV, MP can deliver a cool pink impression with a silky, sheer finish.



Airy Olive

You can create a subtle olive beige on a bleached base.
Grayish BG is also good at creating an airy impression.





Soft Blue Beige



A smoky cool color that strongly controls redness.

IB can achieve translucency even in dark tones with a sophisticated impression.



Smoky Blue

Healthy-looking bluish beige.
IB is good at controlling redness
while achieving a soft, refined finish.



A close-up portrait of a woman with shoulder-length, smoky pearl pink hair. Her hair has a soft, layered texture with some strands swept across her face. She is looking directly at the camera with a neutral expression. She is wearing a dark, sheer top with a white and black patterned trim along the neckline and shoulders.

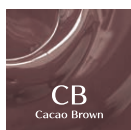
Pearl Beige Pink

Smoky pearl pink with translucency and softness. Recommended for those who want a cool impression.





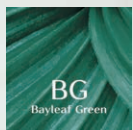
Nude Chocolat Brown



The slight pinkness in CB controls the yellow and orange in the hair, enabling you to express a soft-looking neutral brown.

Natural Olive Grege

Olive grege that naturally enhances the look of your skin.
BG creates a soft impression without getting dull.





Shiny Violet Brown

Refined, shiny brown created by IV.
Its bluish violet can suppress the brassiness
unique to color fading for gray hair,
making it look soft and elegant.





Soft Chiffon Beige

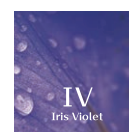
A soft, veil-like beige thanks to TG's smoky grege.

The healthy finish helps you forget you're covering gray hair.



Gentle Grayish Lavender

IV's purple controls the yellow in hair even during the fading process.
The lavender color leaves a gentle impression that anyone can enjoy.











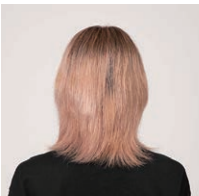



Cool Deep Blue

The classic blue made by IB is recommended for those who want to enjoy a strong, cool color. The deep-toned finish makes it easy to try.



RECIPE LIST

BEFORE	AFTER	RECIPE
		<p>Before : Lv 7</p> <p>1) Roots-Ends LT/13 10 BM CREAM 1 (6%) to Lv 14</p> <p>2) Roots CG/9 : CG/7 = 4 : 1 (3%) Middle-Ends CG/11 (3%)</p>
		<p>Before : Lv 15</p> <p>1) Roots-Ends BM POWDER (6%) to Lv 18</p> <p>2) Roots MP/11 : IV/11 = 1 : 3 (3%) Middle-Ends MP/13 : IV/13 = 1 : 1 (3%)</p>
		<p>Before : Lv 5</p> <p>Roots-Ends 1) BM POWDER (6%) to Lv 15 2) BG/11 : BG/9 = 1 : 1 (6%)</p>
		<p>Before : Lv 12</p> <p>Roots-Ends IB/9 : IB/7 = 3 : 1 (6%)</p>
		<p>Before : Lv 10 (a strong reddish tint remains)</p> <p>Roots IB/7 (3%) Middle-Ends IB/9 : CG/5 = 10 : 1 (3%)</p>
		<p>Before : Lv 18</p> <p>Middle-Ends MP/9 : CB/11 = 1 : 1 (3%)</p>

<Hair color / Hair bleach> • Read the precautions carefully and follow the instructions before using the product.
 <Hair bleach> • Contain persulfate and it might cause allergic reaction • Avoid using product if you have ever experienced rashes or irritations due to hair bleaching.

BEFORE

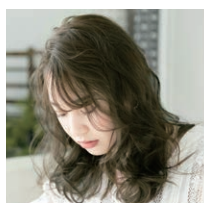
AFTER

RECIPE



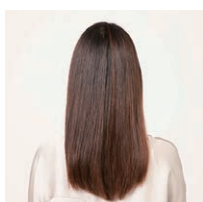
Before : Lv 12

- 1) **Roots-Ends** BM CREAM (6%) to Lv 16
- 2) **Roots** CB/11 : CG/11 = 3 : 1 (6%)
Middle-Ends CB/13 (3%)



Before : Lv 11

- Roots** BG/9 : BG/7 = 1 : 1 (6%)
- Middle-Ends** BG/9 (3%)



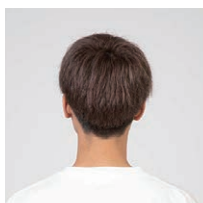
Before : Lv 8

- Roots** IV/9 : CB/3 = 4 : 1 (6%)
- Middle-Ends** IV/11 (3%)



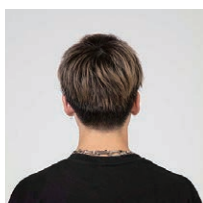
Before : Lv 8

- 1) **Roots-Ends** LT/13 (6%) to Lv 14
- 2) **Roots** TG/11 : CG/3 = 4 : 1 (6%)
Middle-Ends TG/9 : CG/9 = 4 : 1 (3%)



Before : Lv 13 (a grayish tint remains)

- Roots-Ends** IV/9 (6%)



Before : Lv 16

- Roots** IB/5 : CG/3 = 10 : 1 (3%)
- Middle-Ends** IB/7 (3%)

BM...BLEACH MASTER

<Hair color> • Avoid using product if you have ever experienced rashes or irritations due to hair coloring.
 • Check for allergic reaction before applying the hair color by performing a patch test.



Special Thanks

Hair color : Reiko Iima / Uta Mihara / Daigo Abe / Koji Hagiwara (Shiseido Professional)
 Styling : Yusuke Obana / Atsuhiko Kaneko / Sayaka Sumiyoshi (Shiseido Beauty Salon)
 Make up : Emi Sugiyama / Yukari Hara / Go Fujiwara (SABFA Alumni)
 Direction : YUKA ISHIZUKA (Shiseido Hair&Makeup Artist)



Official Instagram
 @shiseidopro_official



COLOR MIRROR
 Meet your color design
 <hair color simulator>



SHISEIDO Co., Ltd.

6F, Shiodome FS Building, Higashi-Shimbashi 1-1-16, Minato-ku, Tokyo 105-0021

TEL +81 3-6218-7982 FAX +81 3-6218-7949 <https://www.shiseido-professional.com>

For detail product
 information,
 please check
 Official Website.

