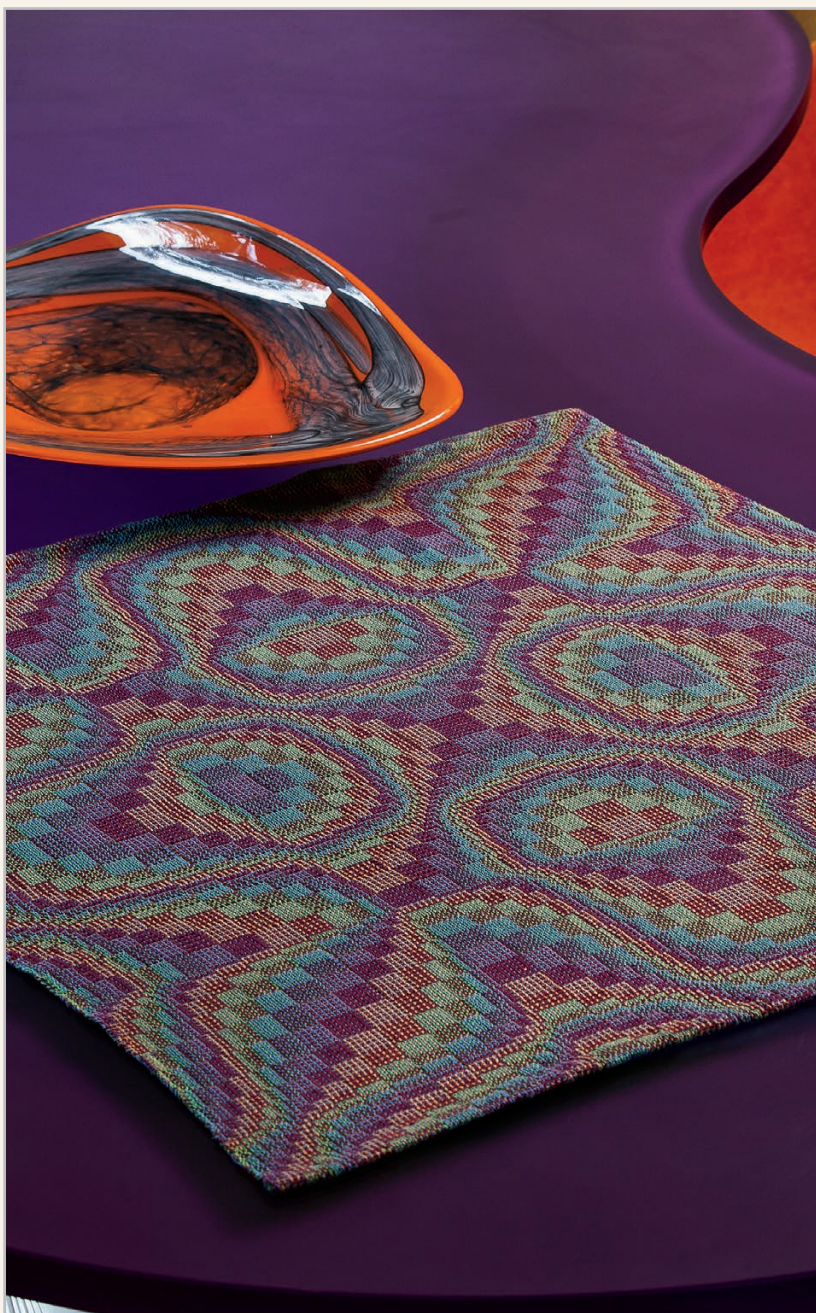


Iridescent Echoes Table Mats

MARIAN STUBENITSKY



JOECOCCA

STRUCTURE

Polychrome doubleweave on an echo weave threading.

EQUIPMENT

8-shaft loom, 33" weaving width; 10-dent reed; 2 shuttles.

YARNS

Warp: organic cotton Ne 8/2 (3,200 yd/lb; Venne Colcoton-Unikat), Jaffa 5-2002 (orange), Burgundy 5-3039, Java 5-4058 (blue), and Green 5-5002, 609 yd each.

Weft: organic cotton Ne 8/2, Steel Blue 5-4003 and Deep Plum 5-4077, 848 yd each.

WARP LENGTH

812 ends 3 yd long (allows 5" for take-up, 35" for loom waste).

SETTS

Warp: 25 epi (2–3/dent in a 10-dent reed).

Weft: 25 ppi.

DIMENSIONS

Width in the reed: 32½".

Woven length (measured under tension on the loom): 68" (34" each square).

Finished size after washing: 2 hemmed squares 26" × 28½".

During the years before I actually wrote my book *Weaving with Echo and Iris*, I did a lot of research and sampling on echo weave. In my experiments, I tried weaving more “echoes.” By serendipity I discovered that an 8-shaft echo weave threading with four parallel lines that was woven using a 3/1/1/3 tie-up produced both woven iridescence and sections of pocket weave. By changing the treadling order, I could make a polychrome, block doubleweave, with pocket weave in one block and integrated doubleweave in the other.

The same threading can also weave a structure similar to turned taqueté by weaving the twill tie-up as pattern picks, alternated with two ground picks acting as a sort of tabby. (Because of the way echo weave is threaded, true plain weave cannot be woven.)

Here I present two table mats in two structures with four parallel lines in the threading. (The draft for the doubleweave version is presented here, and the draft for the turned taqueté variation can be found at weavingtoday.com.) Both are woven on the same threading and tie-up. The warp is long enough to weave two table squares. You can thread one warp and weave both structures, or weave two of the same structure. And if you are interested in learning to design echo weave patterns, the resources at right can start you on your own experiments.

RESOURCES

- Elkins, Barbara. “Peacock Scarf in Networked Echo Weave.” *Handwoven*, September/October 2007, pp. 64–67.
- Inouye, Bonnie. “Two Patterns for Two Scarves on One Warp.” *Handwoven*, January/February 2008, pp. 64–67.
- Schlein, Alice. “Echo Weave: Something Old and Something New.” *Weaver’s*, Issue 32, Summer 1996, pp. 18–22.
- Stubenitsky, Marian. *Weaving with Echo and Iris*. (Margreet Ward, translator.) Uden, Netherlands: Drukwerk der Kinderen, 2015. (Available from the Lone Star Loom Room.)

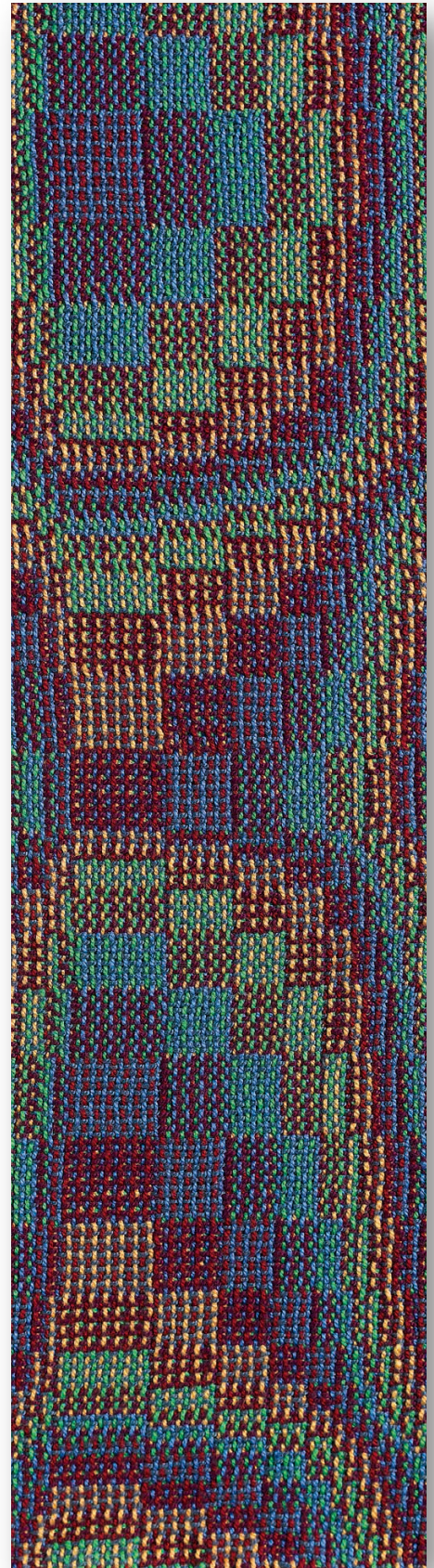
1 Wind 812 warp threads 3 yd long, following the color sequence in the warp color order, Figure 1. With the complicated threading of echo weave, it is probably easiest to warp back to front using two crosses and a raddle. Hold one end of each of the 4 colors in your hand, keeping a finger between each one to prevent twisting, and take them through both crosses as a group. Spread the warps in the raddle with 3 groups of 4 threads in each ½" raddle section, centering for a width of 34". (The last section will contain only 2 groups.) Beam the warp. Place the threading cross into lease sticks suspended behind the heddles, and thread following the draft in Figure 2. Sley 2–3 percent in a 10-dent reed for a total of 25 ends per inch, centering for a weaving width of 32½". Do not use floating selvages.

2 Spread the warp with scrap yarn, using treadles 9 and 10 (echo weave threadings cannot produce true plain weave). Wind a bobbin with each of the weft colors.

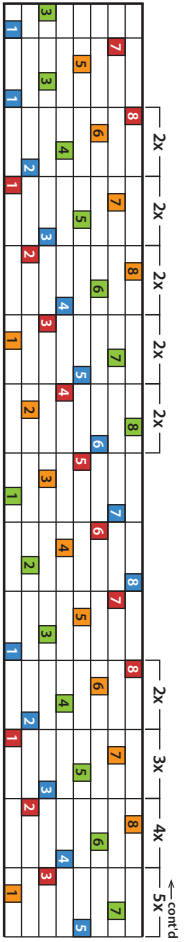
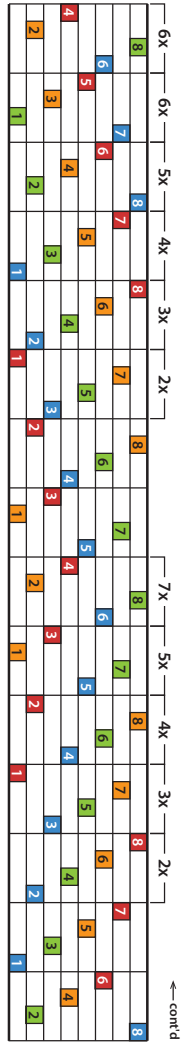
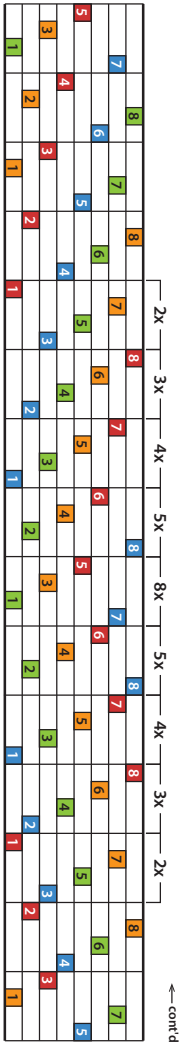
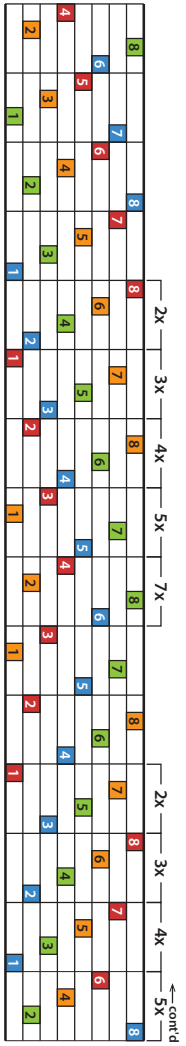
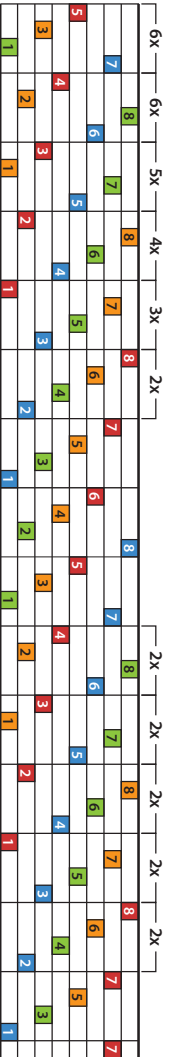
3 Weave the first table square following the treadling and alternating the two weft colors as indicated in Figure 2. Note that where the treadling sequence reverses direction, the treadling group contains only 3 picks to avoid a doubled pick. Weave 2 picks of scrap yarn using treadles 9 and 10 to separate the first square from the next. Either weave a second mat using the doubleweave treadling, or use the turned taqueté treadling found in Figure 4.

4 Remove fabric from the loom. Machine zig-zag or serge the raw edges and on both sides of the scrap yarn between squares. Cut the squares apart between the scrap yarn. To make the hems, turn ⅜" of the cut edges to the wrong side and press. Turn again ½", enclosing the raw edges. Press and handstitch the hem.

5 Handwash using mild soap. Hang to dry. Press smooth using cotton setting on the iron. 



2. Draft



Warp threads (numbers are shaft numbers)

- 4 8/2 cotton, Java 5-4058
- 3 8/2 cotton, Green 5-5002
- 2 8/2 cotton, Burgundy 5-3039
- 1 8/2 cotton, Jaffa 5-2002

Wef threads

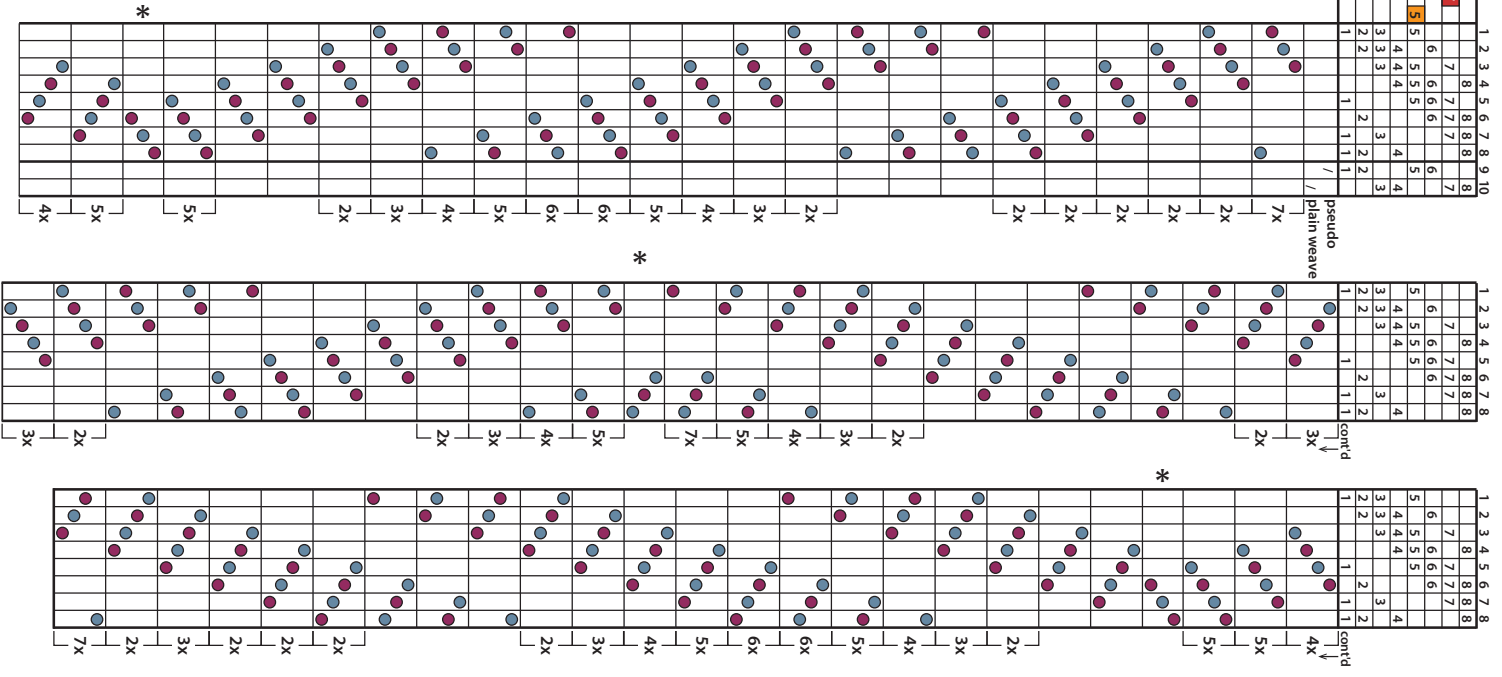
- 8/2 cotton, Deep Plum 5-4077
 - 8/2 cotton, Steel Blue 5-4003
- Note: True plain weave is not possible on this threading.
To weave tabby, alternate treaders 9 and 10.
At places where the treadling direction changes in the treadling sequence (*), one pick is omitted to prevent a doubled thread.

1. Warp color order



3. Heddle count

Shaft 8	104
Shaft 7	99
Shaft 6	104
Shaft 5	99
Shaft 4	104
Shaft 3	99
Shaft 2	104
Shaft 1	99
Total	812



4. Taquete draft

