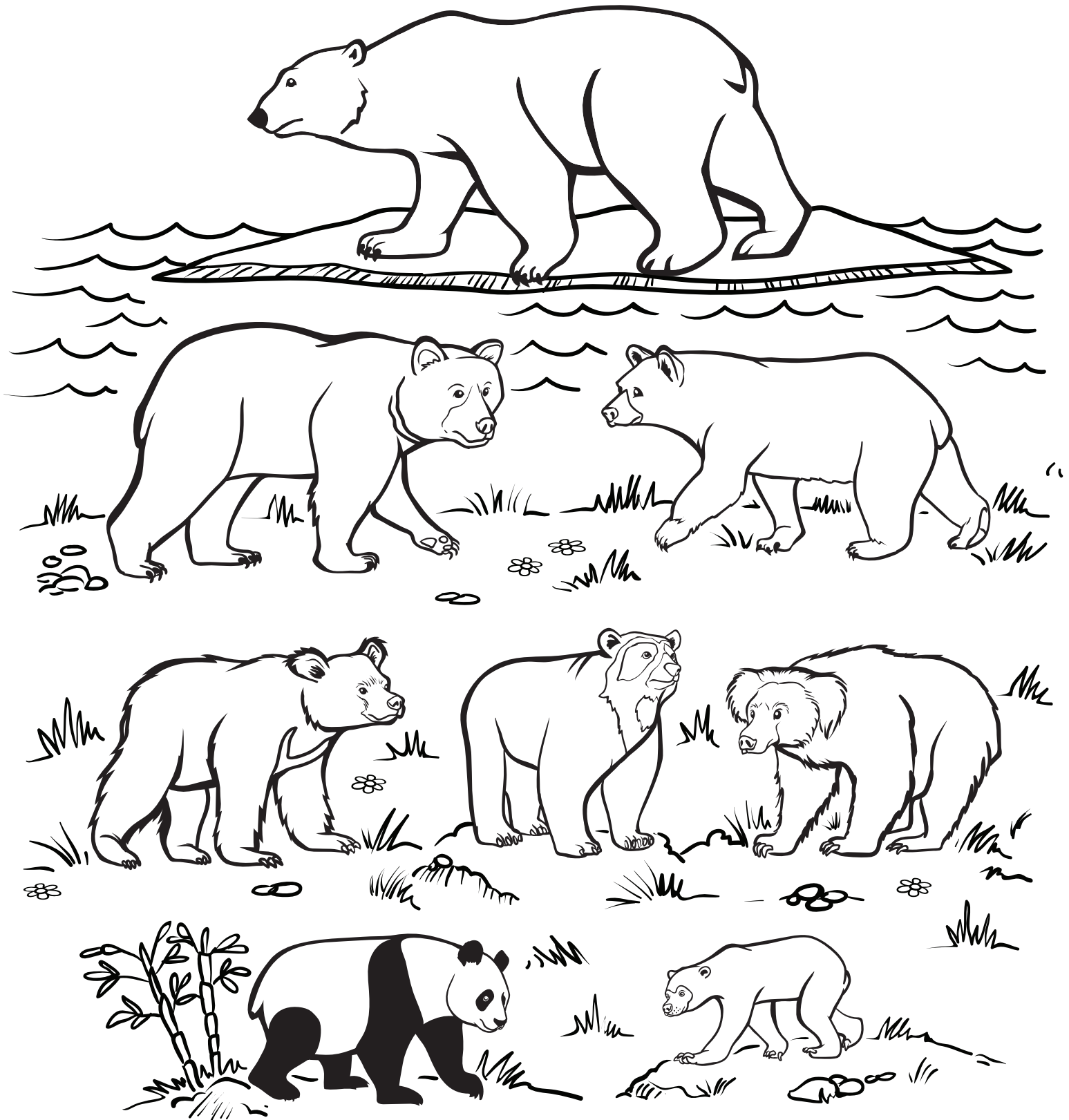


WHAT IS A POLAR BEAR?

COLOR IN THE BEARS AND HABITATS BELOW TO HELP YOU REMEMBER WHAT THEY LOOK LIKE IN THE WILD AND HOW THEY ARE DIFFERENT FROM EACH OTHER.

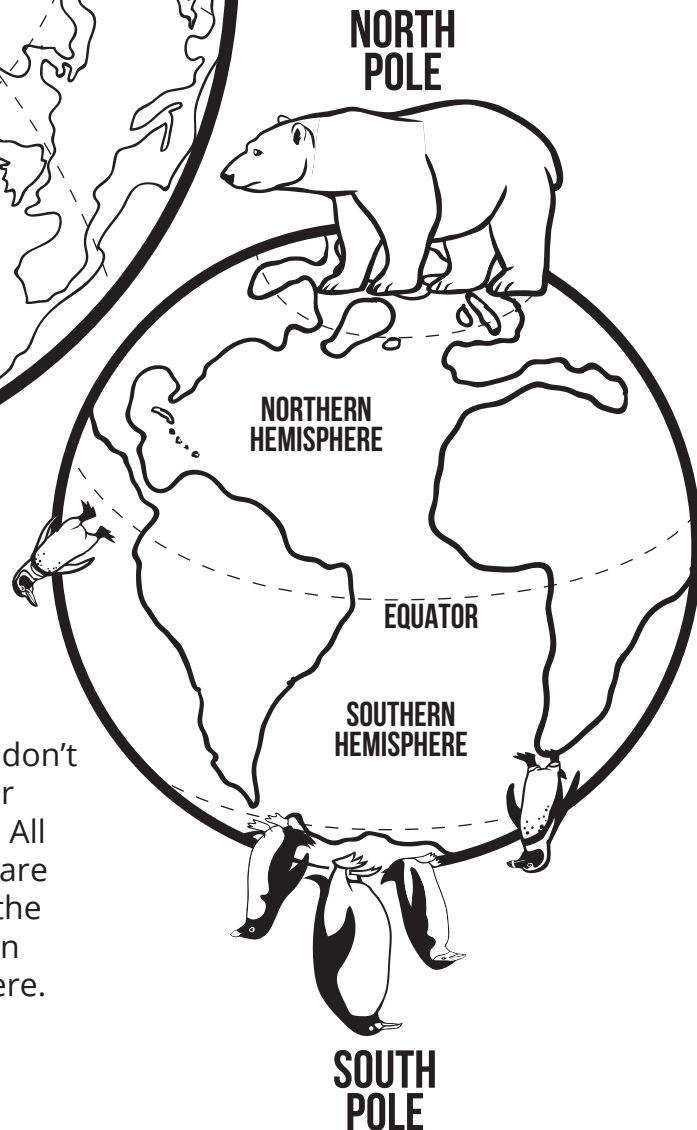
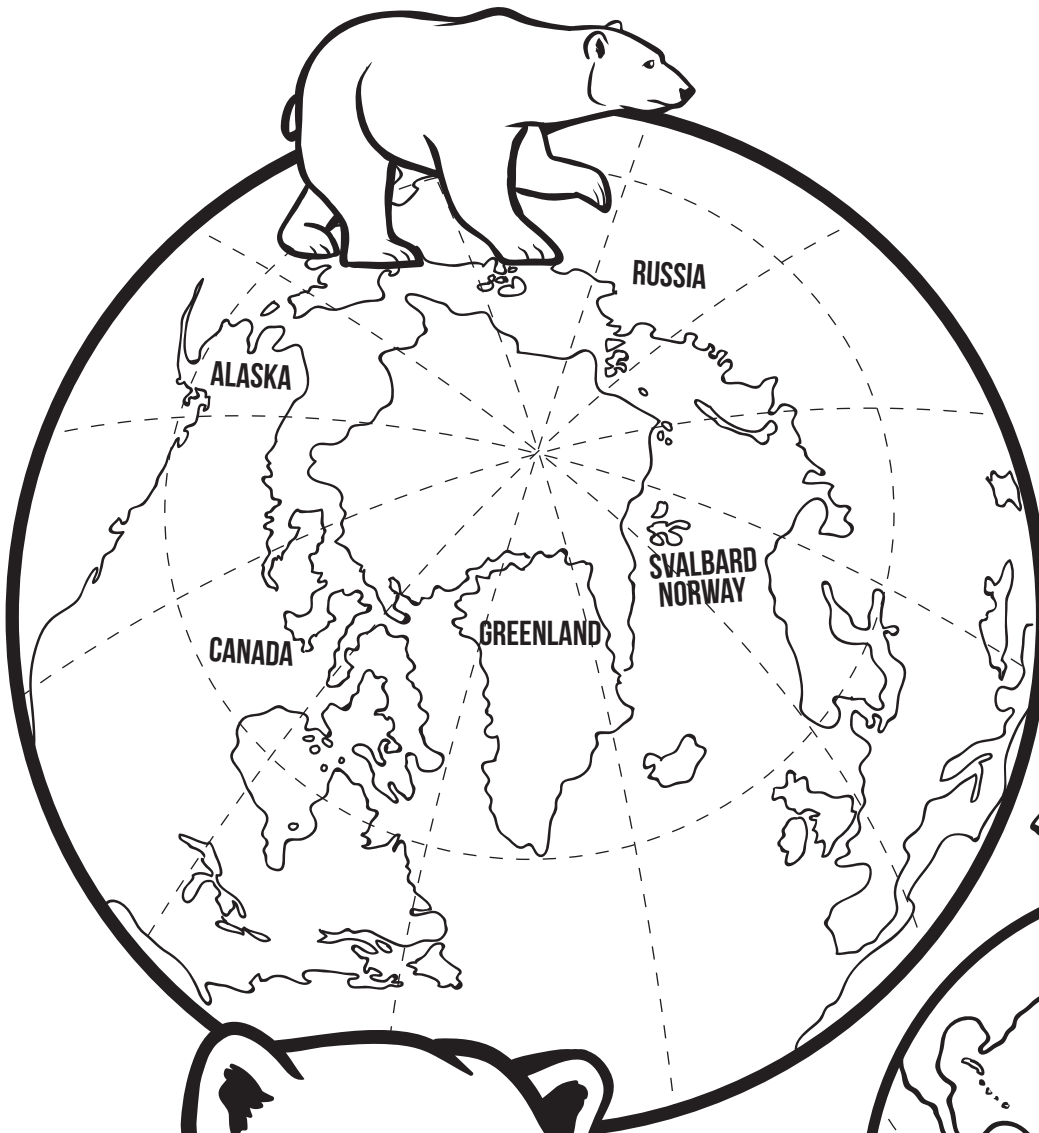


Polar bears are the biggest bears of all! They are also the only bear that needs the land and the sea, because they use sea ice as a platform to find food. Polar bears need sea ice to survive!

WHERE DO POLAR BEARS LIVE?

Polar bears are found in Canada, the U.S. (Alaska), Greenland, Norway (Svalbard), and Russia.

They are called by different names across the Arctic, including nanuq and isbjørn.



Polar bears don't live near penguins! All penguins are found in the Southern Hemisphere.

