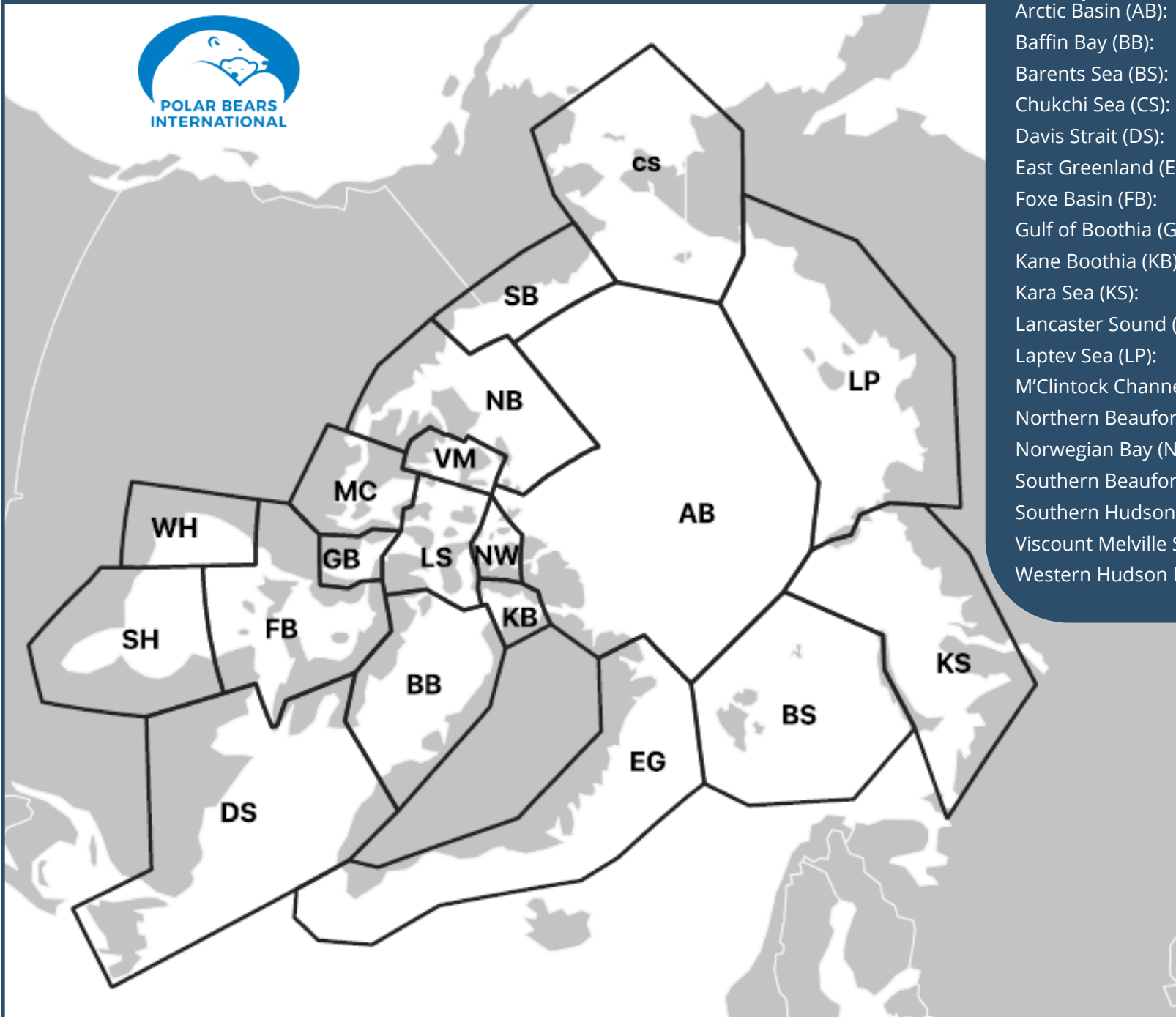


COLOR BY ECOREGIONS

Directions: Shade in each polar bear subpopulation on the map according to the ecoregion that they live in. Use your color key and ecoregion key to help you.



ECOREGION KEY:

Sub Populations

Arctic Basin (AB):	Convergent Ice
Baffin Bay (BB):	Seasonal Ice
Barents Sea (BS):	Divergent Ice
Chukchi Sea (CS):	Divergent Ice
Davis Strait (DS):	Seasonal Ice
East Greenland (EG):	Convergent Ice
Foxe Basin (FB):	Seasonal Ice
Gulf of Boothia (GB):	Archipelago
Kane Boothia (KB):	Archipelago
Kara Sea (KS):	Divergent Ice
Lancaster Sound (LS):	Archipelago
Laptev Sea (LP):	Divergent Ice
M'Clintock Channel (MC):	Archipelago
Northern Beaufort Sea (NB):	Convergent Ice
Norwegian Bay (NW):	Archipelago
Southern Beaufort Sea (SB):	Divergent Ice
Southern Hudson Bay (SH):	Seasonal Ice
Viscount Melville Sound (VM):	Archipelago
Western Hudson Bay (WH):	Seasonal Ice

COLOR KEY:

Convergent Ice:	Green
Divergent Ice:	Blue
Seasonal Ice:	Red
Archipelago:	Yellow