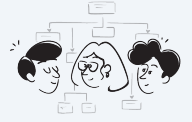


# Report by a contemporary witness

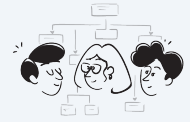


Name:

Date:



# Report by a contemporary witness



Name:

Date:

## Assignment

Read the following text and then answer the questions.

### **A Day in the Life of John the Barber**

Hello! My name is John, and I am a barber living in the Jim Crow Era, around the 1930s. Life is tough, but I make the best of it. Let me take you through a day in my life.

I am 45 years old, and that's quite an age for a Black man in this era. Many of my peers don't live past 50 due to poor living conditions and lack of medical care. I own a small barbershop in our segregated community, where I cut hair for other Black men. It's a decent job, but it doesn't offer much beyond the basics.

Life expectancy for us is low. Diseases, poor nutrition, and lack of access to healthcare take a heavy toll. We have to rely on home remedies and the rare visit from a traveling doctor. Despite these hardships, we find ways to support each other.

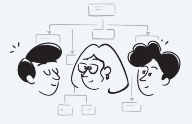
Social life revolves around our community and the church. We gather for services on Sundays, and it's a time for singing, praying, and sharing our struggles and joys. It's one of the few places where we can relax and feel a sense of belonging. Outside of our community, we face constant discrimination and segregation.

Everyday life under Jim Crow laws is harsh. We are separated in schools, buses, theaters, and even water fountains. Signs reading "Whites Only" or "Colored" are everywhere. We can't eat at the same restaurants or sit in the same sections as white people. It's a constant reminder that we are seen as second-class citizens.

Despite the oppression, we influence society in many subtle ways. Our music, like jazz and blues, becomes popular even among white audiences. Our resilience and determination to survive and thrive in the face of adversity inspire future generations to fight for civil rights and equality.

It's not an easy life, but we find strength in our community and our faith. We hope for a better future where our children won't have to face the same injustices we do. Until then, we continue to work hard, support each other, and keep our hope alive.

# Report by a contemporary witness



Name:

Date:

## Choose the correct answer.

**Based on John's experiences, what was one significant factor contributing to the low life expectancy of Black people during the Jim Crow era?**

- Poor living conditions and limited access to healthcare
- Excessive labor demands in factories
- High crime rates in their communities
- Lack of educational opportunities

**How did John and his community find solace and a sense of belonging despite the oppressive Jim Crow laws?**

- By organizing protests against segregation
- By gathering at the church for services and community support
- By attending integrated schools
- By moving to northern cities to escape discrimination

**In what way did John's community subtly influence broader society during the Jim Crow era?**

- By establishing successful businesses in white neighborhoods
- Through their music, like jazz and blues, becoming popular among white audiences
- By holding political offices despite segregation laws
- By introducing new agricultural techniques

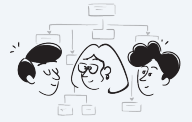
**Despite facing constant discrimination, what element gives John hope for a better future?**

- The success of his barbershop business
- The resilience and determination of his community
- The possibility of migrating to another country
- The promise of governmental reforms

**How did Jim Crow laws affect the daily lives of Black people like John?**

- They were denied access to education entirely
- They were required to pay higher taxes than white citizens
- They were prohibited from owning any property
- They faced separation in public spaces like schools and transportation

# Report by a contemporary witness

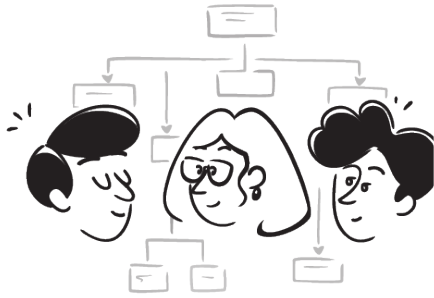


Name:

Date:

## Work order

Fill in the profile using the information from the text.



**Name**

**Occupation**

**Life expectancy**

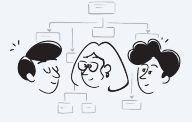
**social life**

**Everyday life**

**Influence**

**Challenges**

# Report by a contemporary witness



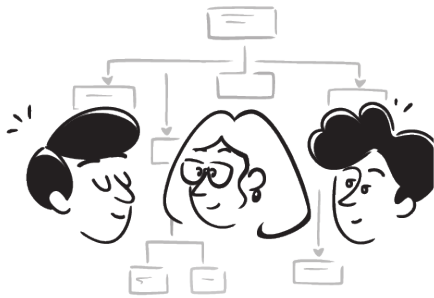
Name:

Date:



## Info

Here you will find the solutions for the teacher.



### Name

John

### Occupation

Barber

### Life expectancy

Low, usually not past 50 due to poor living conditions and lack...

### Social life

Revolves around the community and the church, with gatherings for services on Sundays for singing, praying, and sharing experiences

### Everyday life

Harsh under Jim Crow laws, with constant segregation in schools, buses, theaters, water fountains, restaurants, and other public places

### Influence

Music like jazz and blues becomes popular even among white audiences; resilience and determination inspire future generations to fight for civil rights and equality

### Challenges

Facing constant discrimination and segregation, poor nutrition, diseases, lack of access to healthcare, and being seen as second-class citizens

