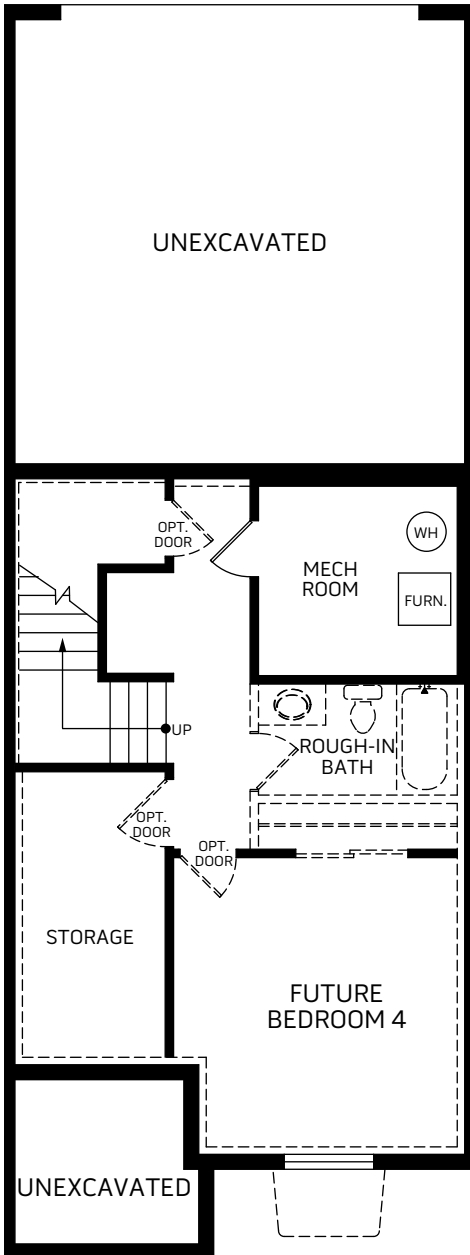
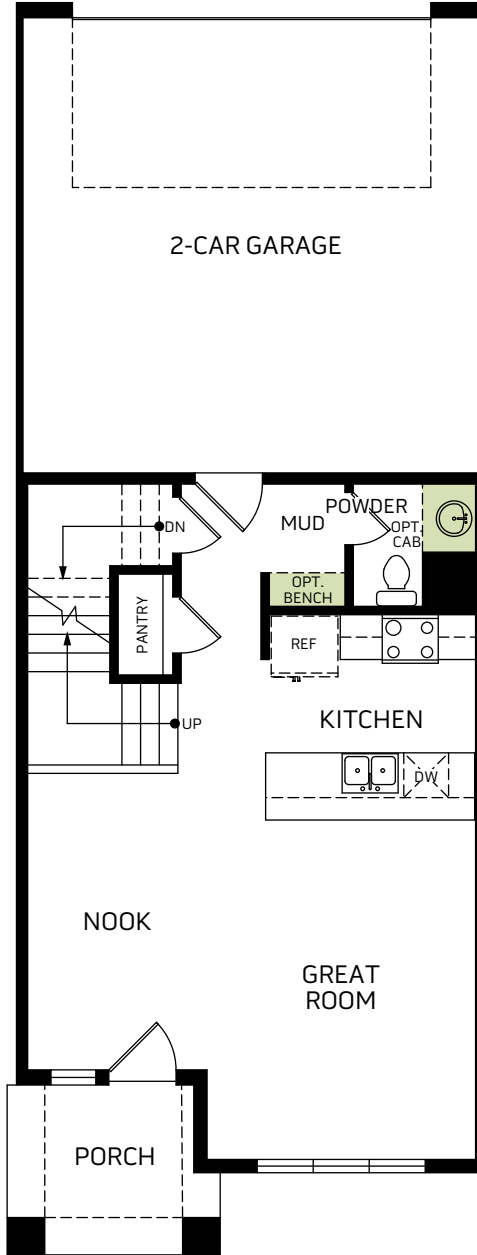


Madison

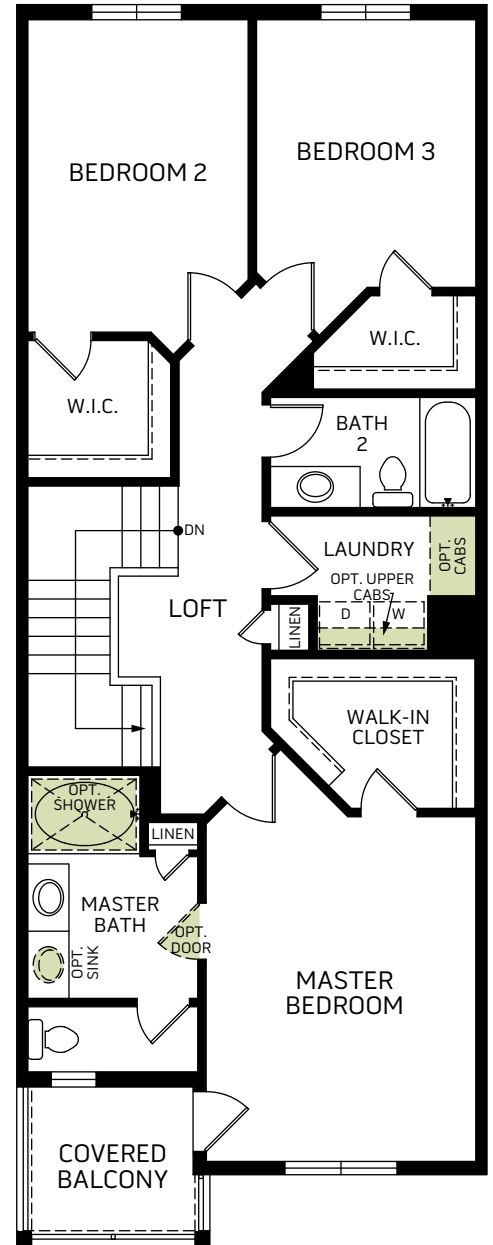
Two-story • 1,620 Finished Sq. Ft • 2,193 Total Sq. Ft. • 3-4 Bedrooms • 2.5-3.5 Baths • Great Room • Walk-In Closet & Mud Room • 2 Car Garage



BASEMENT
573 Sq. Ft.



FIRST FLOOR
625 Sq. Ft.



SECOND FLOOR
995 Sq. Ft.



Woodside Homes reserves the right to change elevations, specifications, materials and prices without notice. All square footages are approximate. Window location, porches, ceiling heights and room dimensions vary per elevation. The availability of certain options is subject to construction status and schedule. Optional features may be predetermined and included at additional cost on select homes. Renderings are artist's conception only.
Rev. 07/20

DAY RANCH

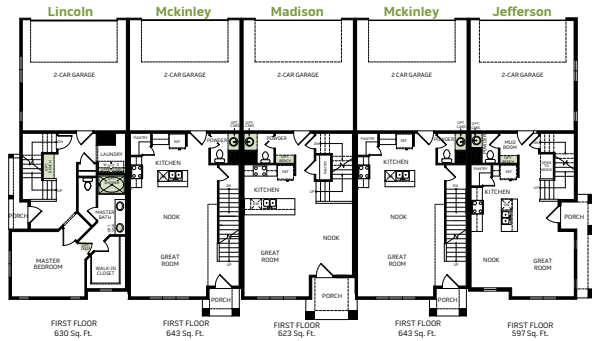


WoodsideHomes.com
1202 West Dun Way, Bluffdale, UT 84065

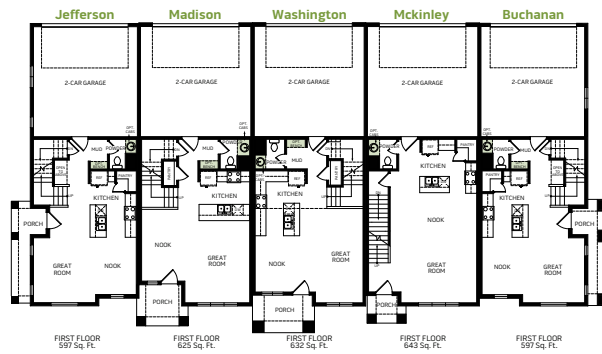
5 PLEX A, 5 PLEX B, 6 PLEX B & 7 PLEX



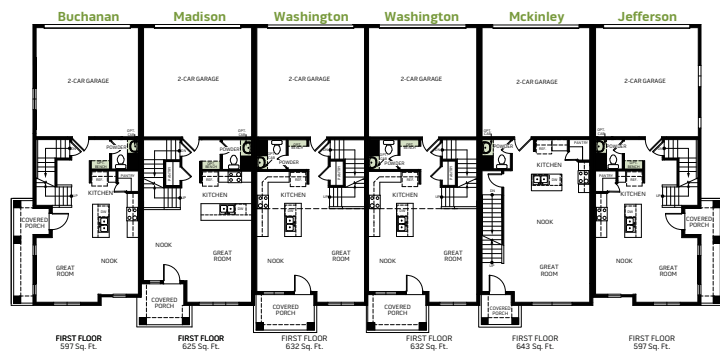
5 PLEX A



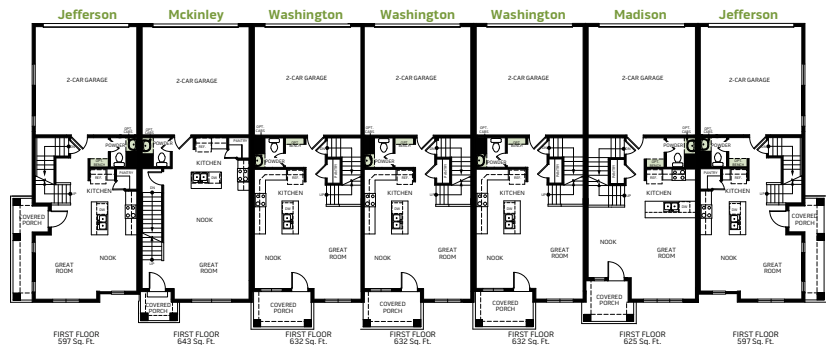
5 PLEX B



6 PLEX B



7 PLEX



Woodside Homes reserves the right to change elevations, specifications, materials and prices without notice. All square footages are approximate. Window location, porches, ceiling heights and room dimensions vary per elevation. The availability of certain options is subject to construction status and schedule. Optional features may be predetermined and included at additional cost on select homes. Renderings are artist's conception only.
Rev. 01/21

