

# Palo Verde

At North Creek

REDWING | PLAN 5035



Spanish Elevation (A)

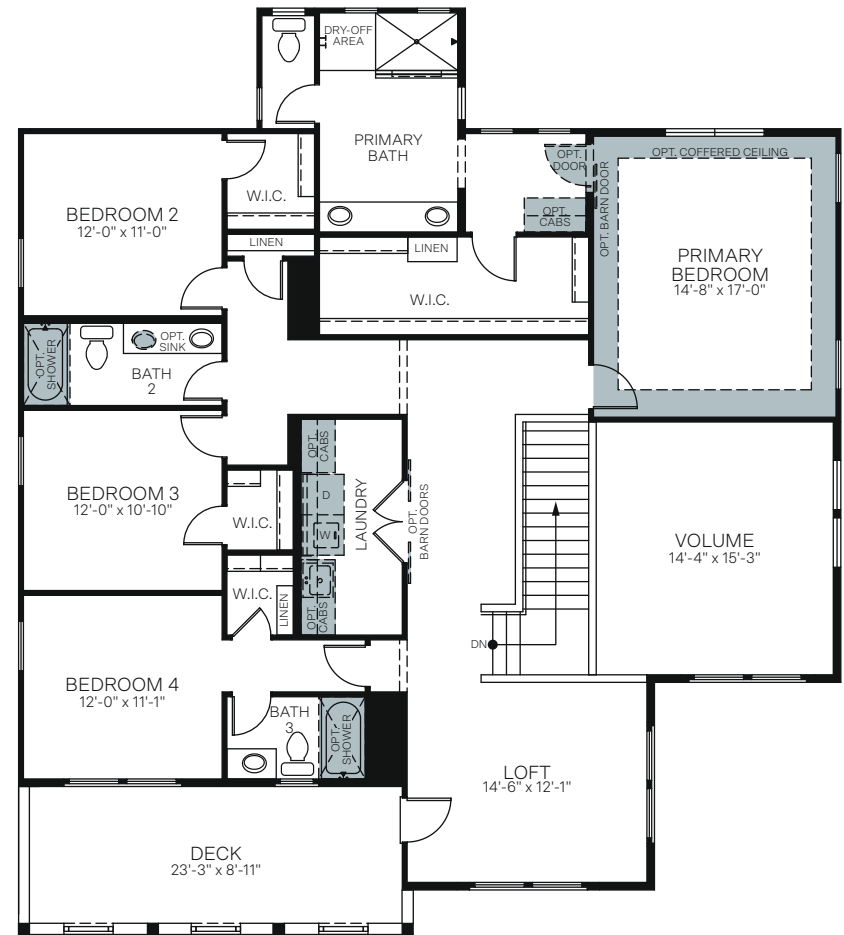
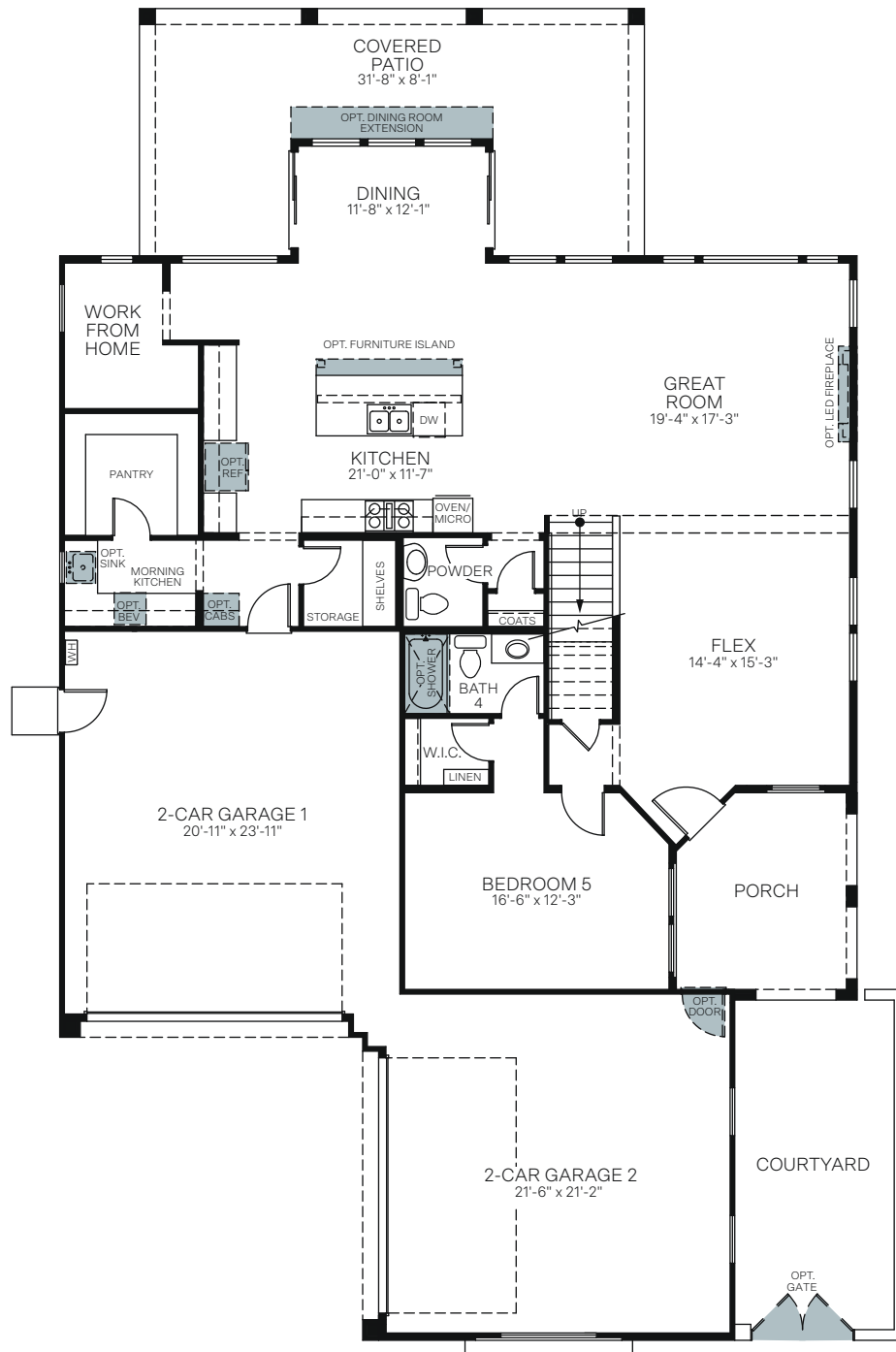


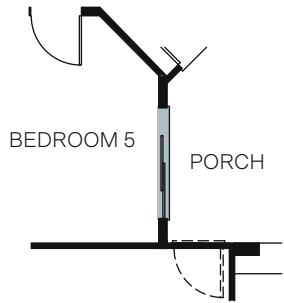
Craftsman Elevation (B)



Western Prairie Elevation (C)

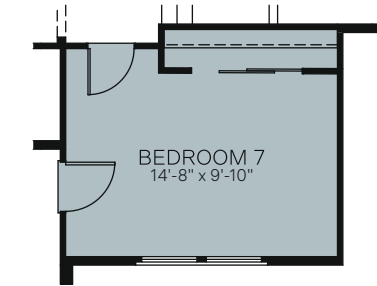
TWO-STORY • 3,594 SQ. FT.





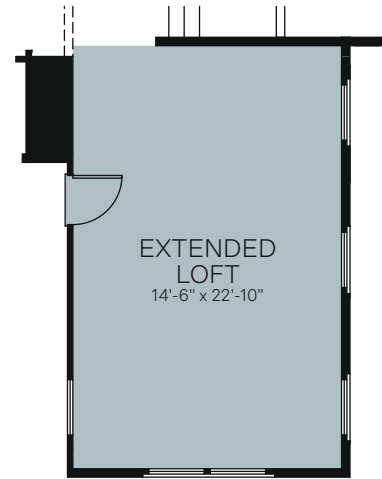
BEDROOM 5  
PORCH

OPTIONAL 6 FT. SLIDING  
GLASS DOOR AT BEDROOM 5



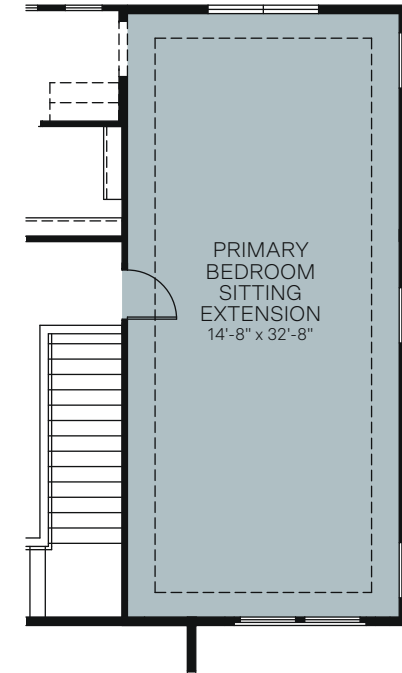
BEDROOM 7  
14'-8" x 9'-10"

OPTIONAL BEDROOM 7 ILO LOFT



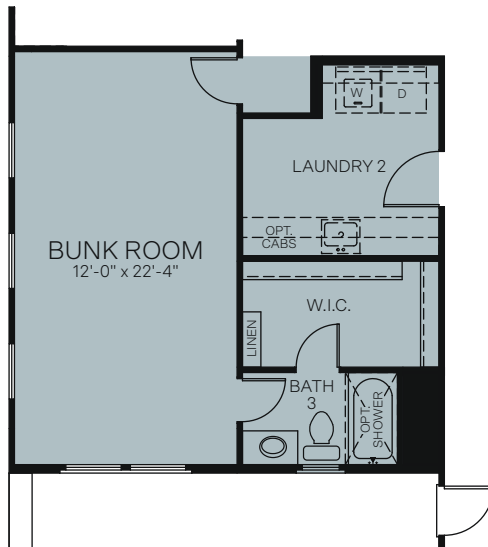
EXTENDED  
LOFT  
14'-6" x 22'-10"

OPTIONAL EXTENDED LOFT  
(NOT AVAILABLE WITH BEDROOM 7)



PRIMARY  
BEDROOM  
SITTING  
EXTENSION  
14'-8" x 32'-8"

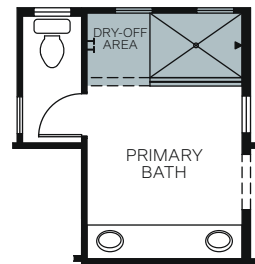
OPTIONAL PRIMARY  
BEDROOM SITTING EXTENSION



BUNK ROOM  
12'-0" x 22'-4"

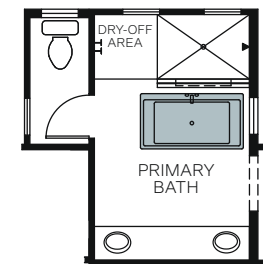
LAUNDRY 2  
OPT. CABS  
W.I.C.  
LINEN  
BATH 3  
OPT. SHOWER

OPTIONAL BUNK ROOM WITH LAUNDRY 2



DRY-OFF AREA  
PRIMARY BATH

OPTIONAL EXTENDED SHOWER WITH  
FULL GLASS AT PRIMARY BATHROOM



DRY-OFF AREA  
PRIMARY BATH

OPTIONAL FREESTANDING  
TUB AT PRIMARY BATHROOM  
(NOT AVAILABLE WITH EXTENDED SHOWER WITH FULL GLASS)



Woodside Homes reserves the right to change floor plans, features, elevations, prices, materials and specifications without notice. All square footages and measurements are approximate. Please see Sales Professional for full details. 1/2023

