

Single Story • 1,369 Sq. Ft. • 2 Bedrooms • 2 Baths • 2-Bay Garage



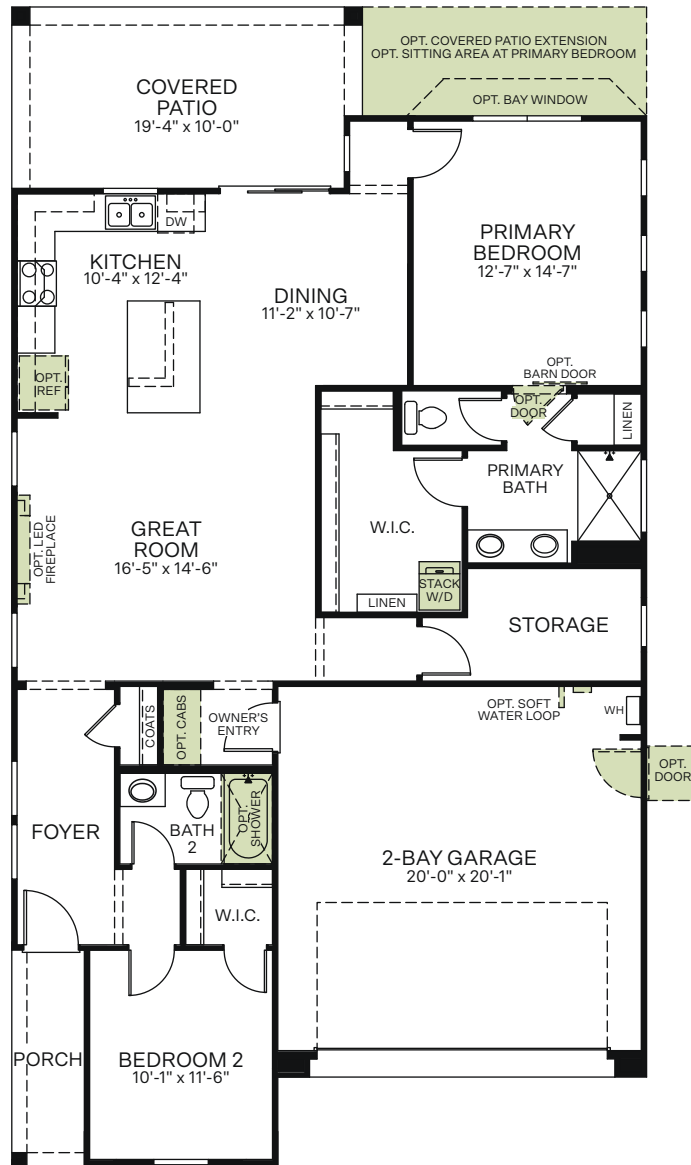
Spanish (A)



Craftsman (B)

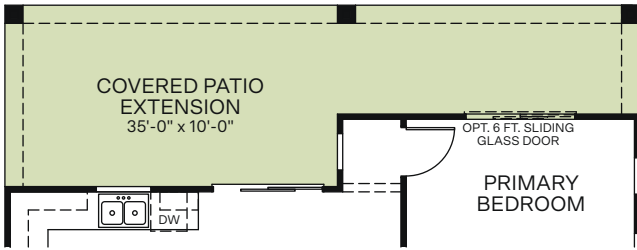


Western Prairie (C)

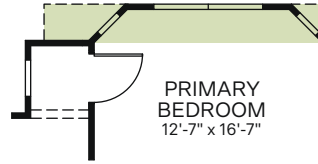


Woodside Homes reserves the right to change floor plans, features, elevations, prices, materials and specifications without notice. All square footages and measurements are approximate. Please see Sales Professional for full details. 02/2022

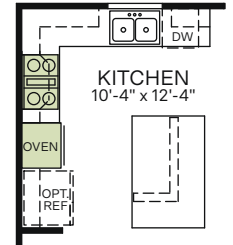
OPTIONS



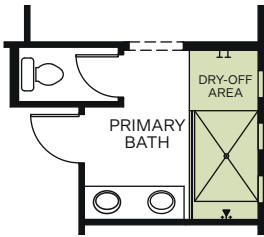
OPTIONAL COVERED PATIO EXTENSION
(OPT. 6 FT. SLIDING GLASS DOOR AT PRIMARY BEDROOM ONLY
AVAILABLE WITH COVERED PATIO EXTENSION)



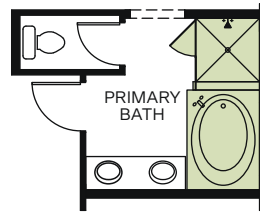
OPTIONAL BAY WINDOW AT PRIMARY BEDROOM
(NOT AVAILABLE WITH COVERED PATIO EXTENSION)
(NOT AVAILABLE WITH SITTING AREA AT PRIMARY BEDROOM)



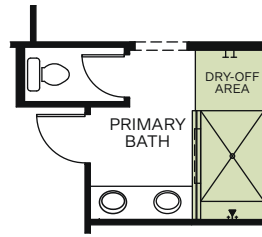
OPTIONAL KITCHEN APPLIANCE LAYOUT



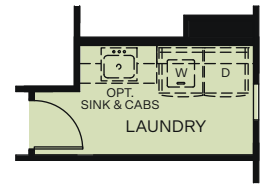
OPTIONAL EXTENDED SHOWER WITH FULL GLASS AT PRIMARY BATHROOM



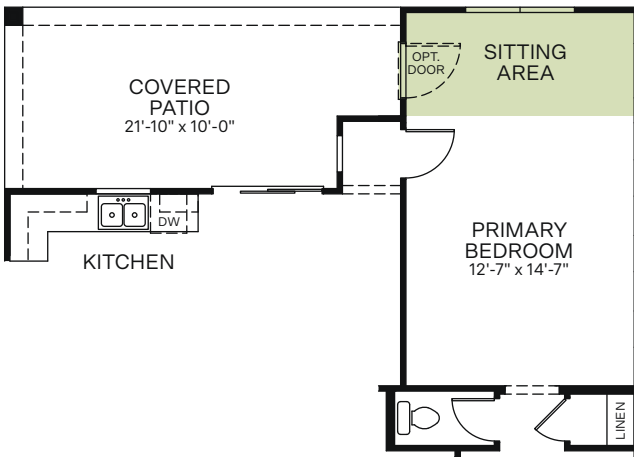
OPTIONAL SEPARATE TUB/SHOWER AT PRIMARY BATHROOM



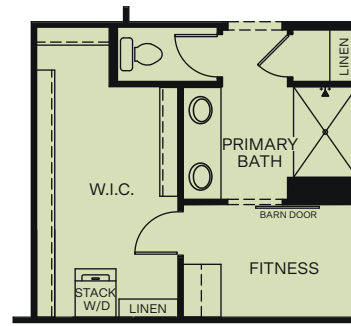
OPTIONAL EXTENDED SHOWER WITH HALF WALL AT PRIMARY BATHROOM



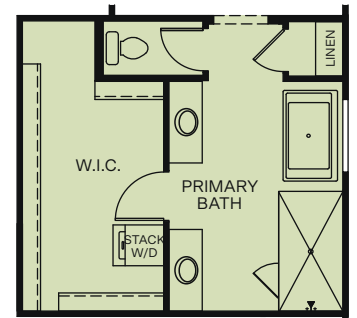
OPTIONAL LAUNDRY ROOM I/O STORAGE
(NOT AVAILABLE WITH FITNESS OR LUXURY PRIMARY BATH OPTIONS)



OPTIONAL SITTING AREA AT PRIMARY BEDROOM
(NOT AVAILABLE WITH BAY WINDOW AT PRIMARY BEDROOM)
(NOT AVAILABLE WITH COVERED PATIO EXTENSION)



OPTIONAL FITNESS ROOM
(NOT AVAILABLE WITH LAUNDRY ROOM OR LUXURY PRIMARY BATHROOM OPTIONS)



OPTIONAL LUXURY PRIMARY BATHROOM
(NOT AVAILABLE WITH FITNESS OR LAUNDRY ROOM OPTIONS)



Woodside Homes reserves the right to change floor plans, features, elevations, prices, materials and specifications without notice. All square footages and measurements are approximate. Please see Sales Professional for full details. 02/2022

