

WoodsideHomes.com

Let's get you home.

Bayview At Shoreline

CEDAR



Traditional (A)



Farmhouse (B)

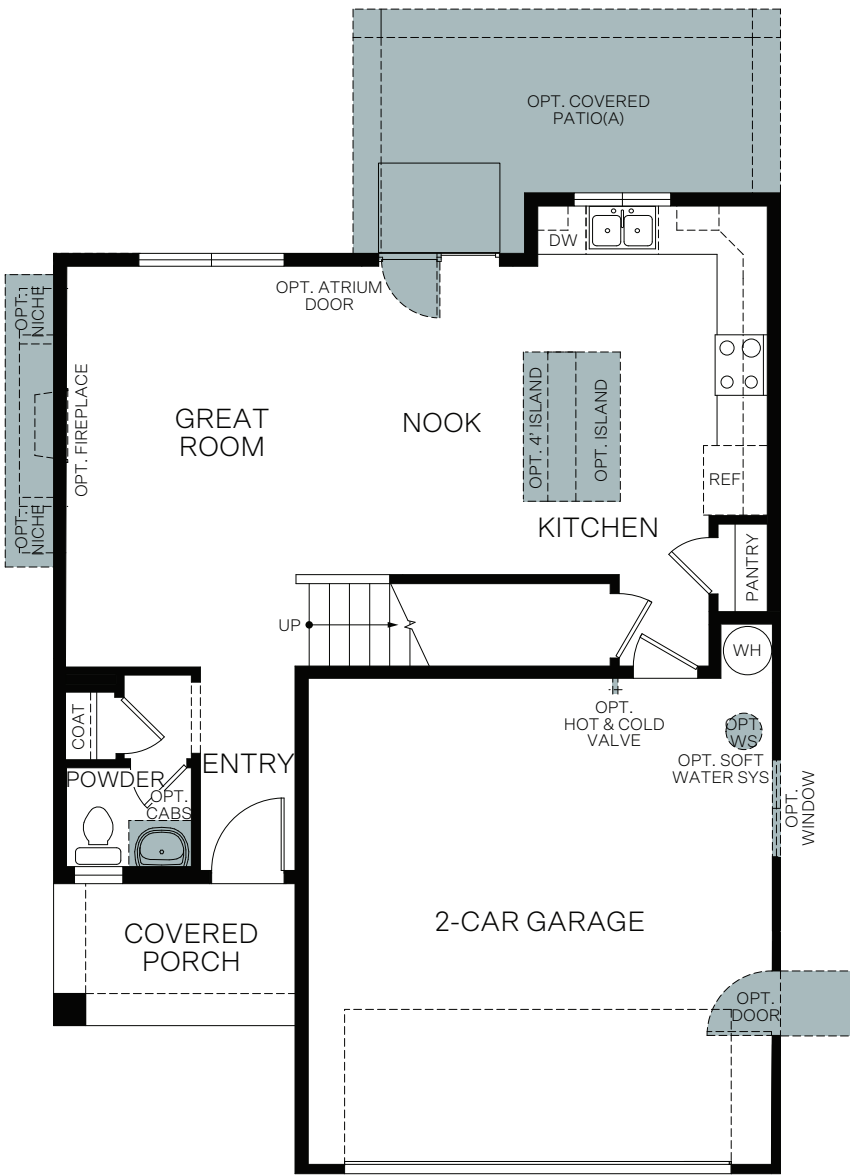


Craftsman (C)

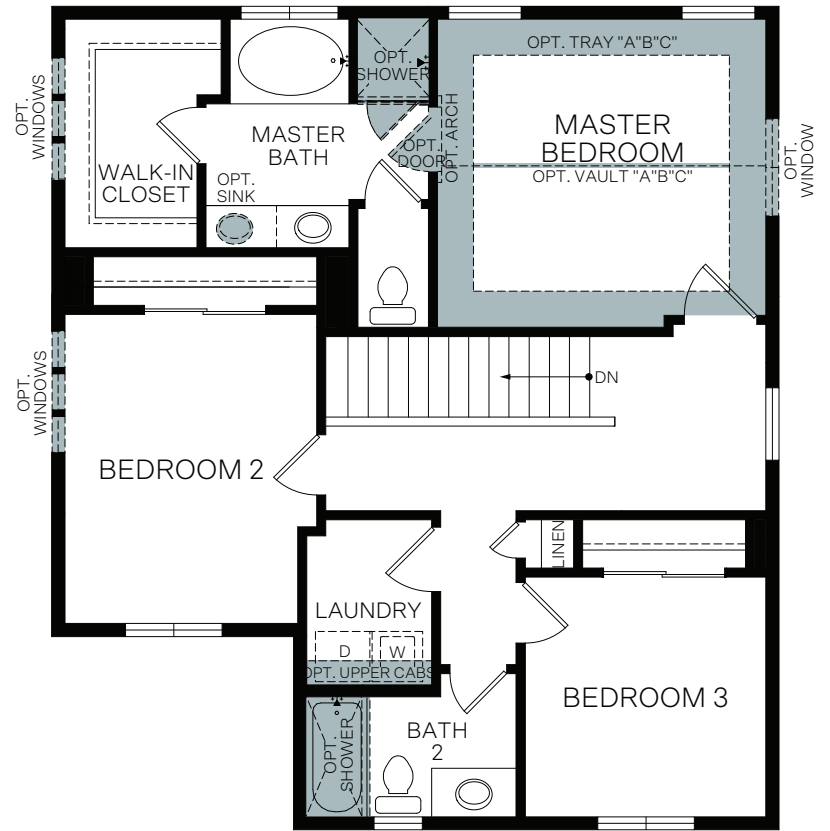


Prairie (D)

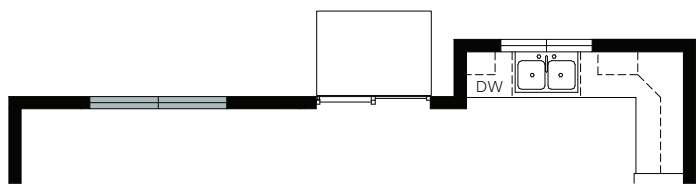
TWO-STORY 1,529 SQ. FT.



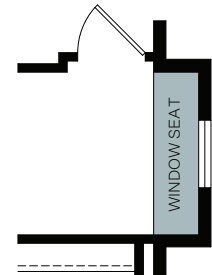
FIRST FLOOR
629 Sq. Ft.



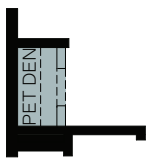
SECOND FLOOR
900 Sq. Ft.



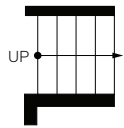
OPT. TRANSOM WINDOW PACKAGE



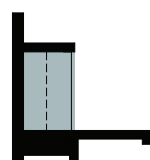
OPT. WINDOW SEAT
Adds: 16 Sq. Ft.



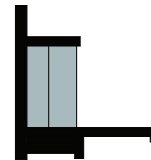
OPT. PET DEN



OPT. CHARGING STATION



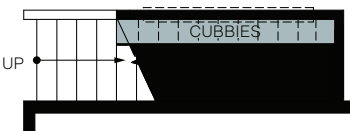
OPT. CHARGING STATION WITH SHELVES



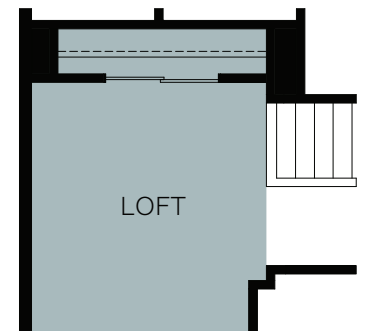
OPT. OFFICE SPACE AT STAIRS



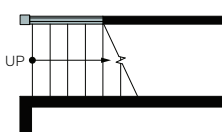
OPT. READING NOOK AT STAIRS



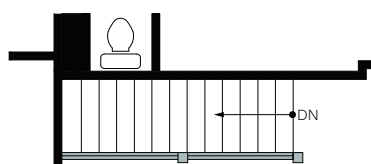
OPT. CUBBIES AT STAIRS



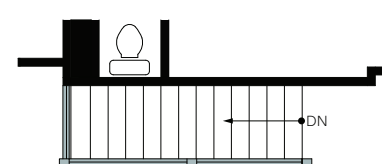
OPT. LOFT



OPT. RAILING 1



OPT. RAILING 2



OPT. RAILING 3