

Two Story • 2,093 Sq. Ft. • 3 Bedrooms • 2.5 Baths • 2-Bay Garage



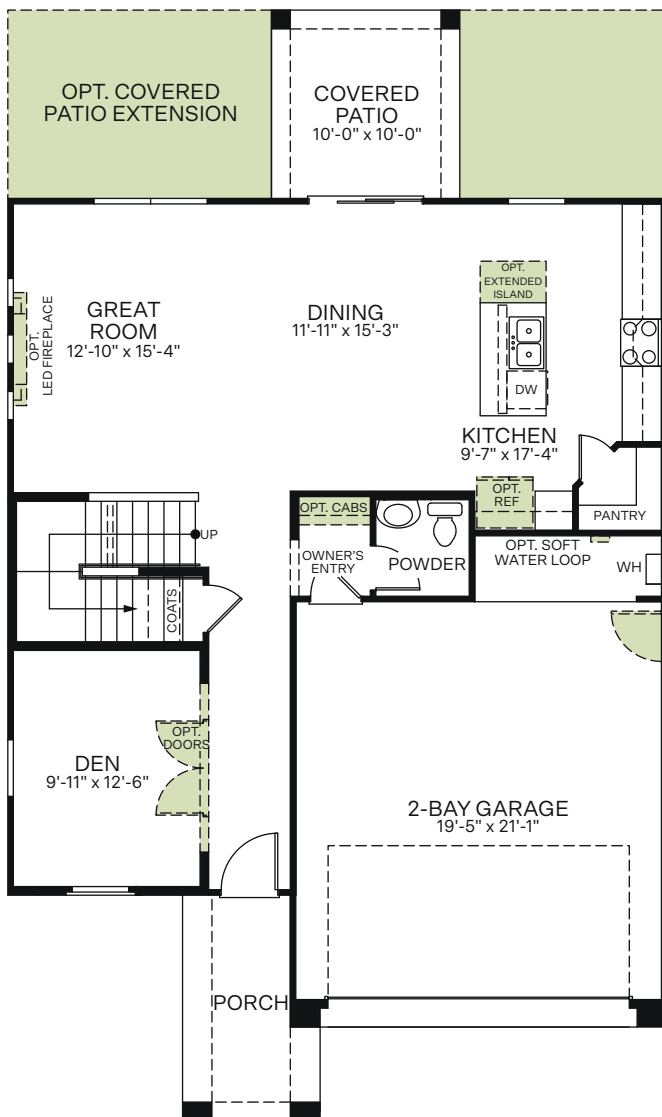
Spanish (A)



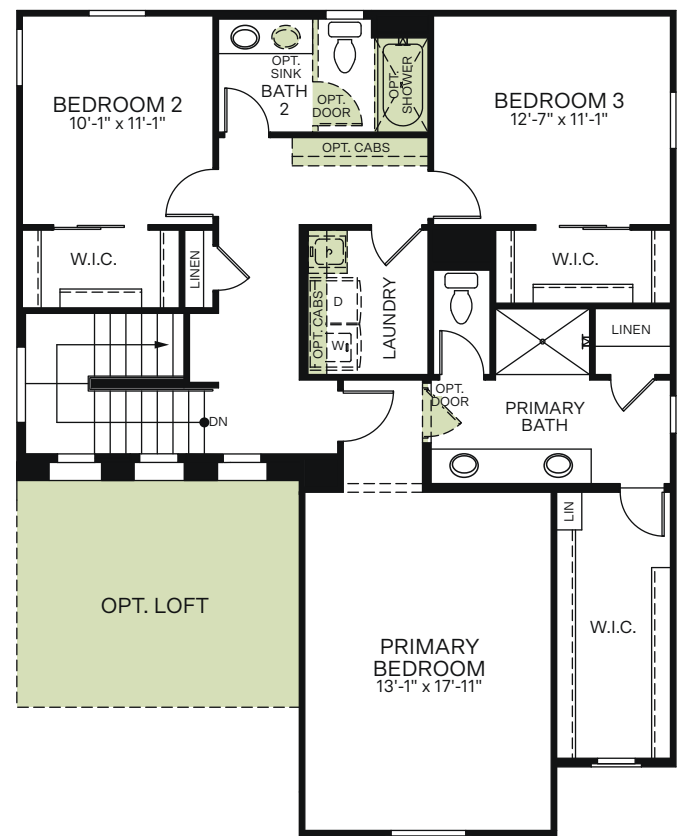
Craftsman (B)



Western Prairie (C)



FIRST FLOOR

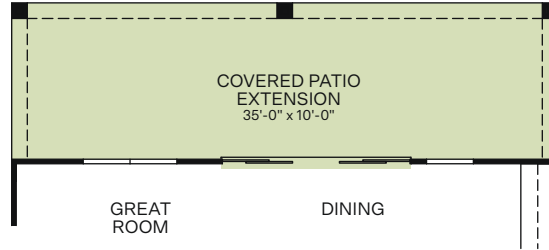


SECOND FLOOR

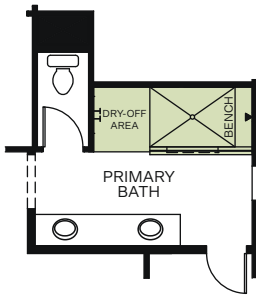


Woodside Homes reserves the right to change floor plans, features, elevations, prices, materials and specifications without notice. All square footages and measurements are approximate. Please see Sales Professional for full details. 02/2022

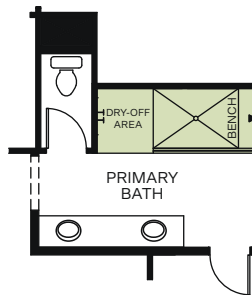
OPTIONS



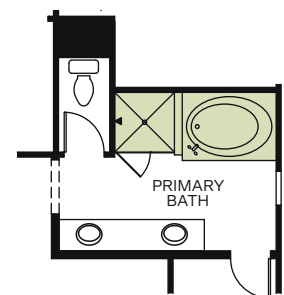
OPTIONAL 12 FT. CENTER SLIDING GLASS DOOR AT DINING
(ONLY AVAILABLE WITH OPTIONAL COVERED PATIO EXTENSION)



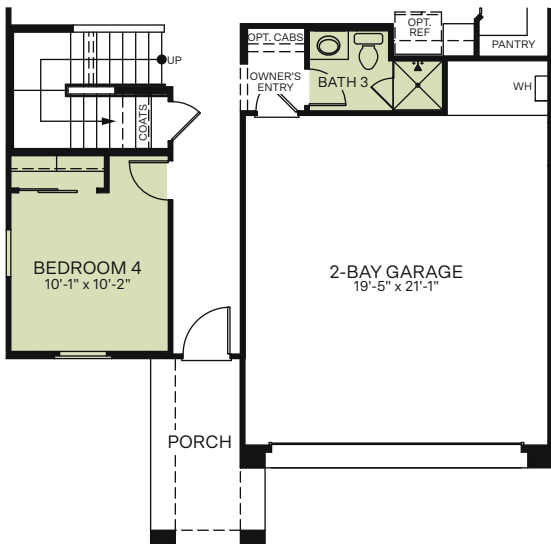
OPTIONAL EXTENDED SHOWER WITH HALF WALL AT PRIMARY BATHROOM



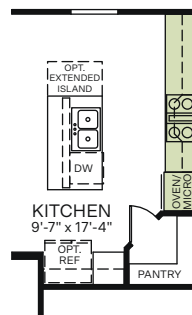
OPTIONAL EXTENDED SHOWER WITH FULL GLASS AT PRIMARY BATHROOM



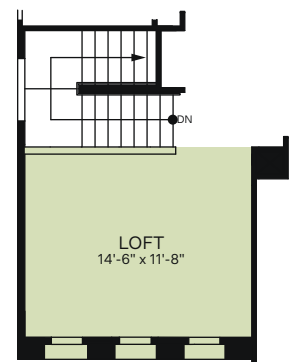
OPTIONAL SEPARATE TUB/SHOWER AT PRIMARY BATHROOM



OPTIONAL BEDROOM 4 WITH BATH 3 ILO DEN



OPTIONAL KITCHEN APPLIANCE LAYOUT



OPTIONAL LOFT

