

## Addison

Two-story • 2,577 Finished Sq. Ft. • 4,245 Total Sq. Ft. • 4-7 Bedrooms • 2.5-4.5 Baths • Open Great Room • Living Room • Main Floor Master Suite • Opt. Covered Patio • Opt. Bonus Room • 2 Car Garage



**Traditional (A)**



**Farmhouse (B)**

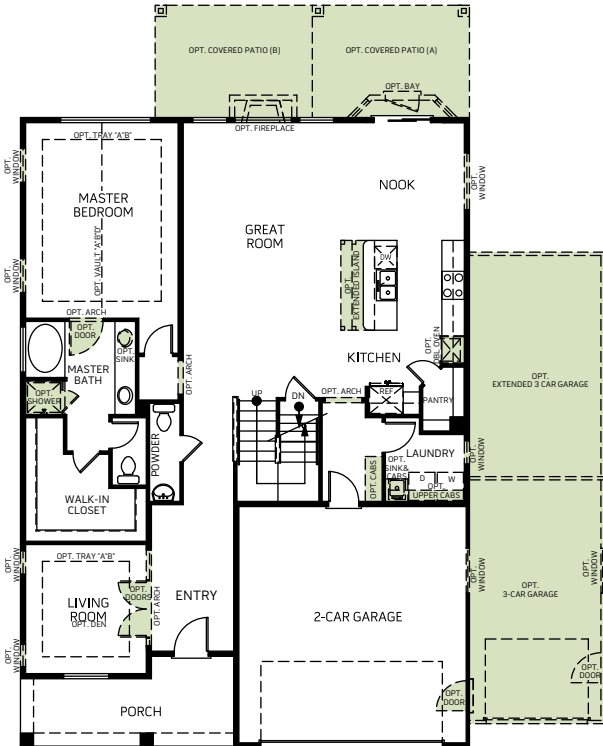


**Prairie (D)**

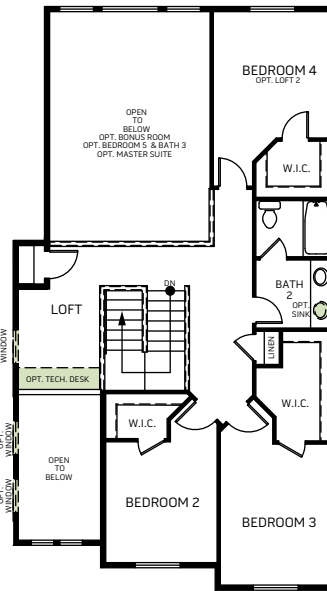
Woodside Homes reserves the right to change elevations, specifications, materials and prices without notice. All square footages are approximate. Window location, porches, ceiling heights and room dimensions vary per elevation. The availability of certain options is subject to construction status and schedule. Optional features may be predetermined and included at additional cost on select homes. Renderings are artist's conception only.  
Rev. 03/21

**Addison**

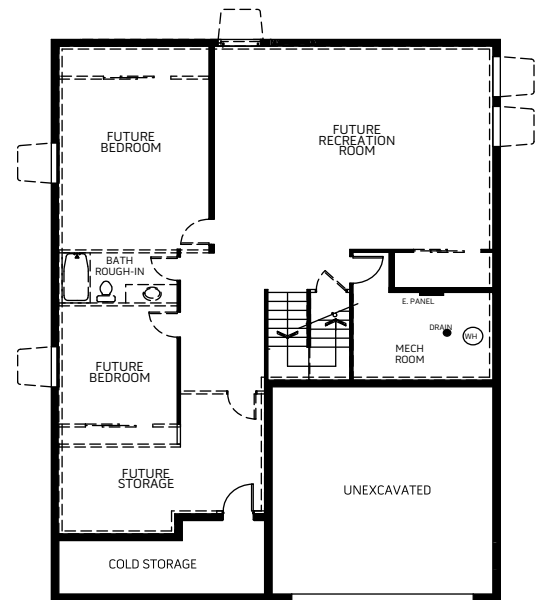
Two-story • 2,577 Finished Sq. Ft. • 4,245 Total Sq. Ft. • 4-7 Bedrooms • 2.5-4.5 Baths • Open Great Room • Living Room • Main Floor Master Suite • Opt. Covered Patio • Opt. Bonus Room • 2 Car Garage



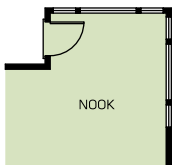
FIRST FLOOR  
1,670 Sq. Ft.



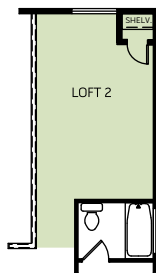
SECOND FLOOR  
907 Sq. Ft.



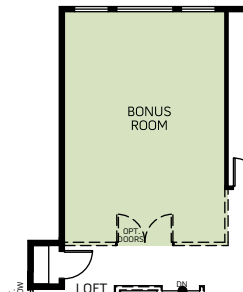
BASEMENT  
1,668 Sq. Ft.



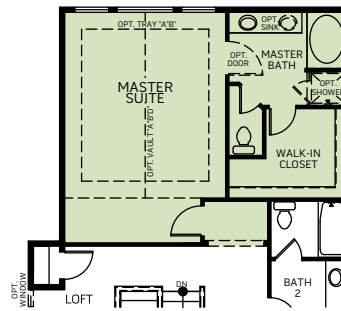
OPT. EXTENDED NOOK  
Adds: 56 Sq. Ft.



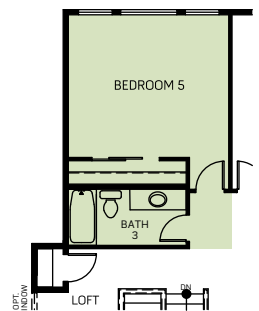
OPT. LOFT 2



OPT. BONUS ROOM  
Adds: 310 Sq. Ft.



OPT. MASTER SUITE  
Adds: 310 Sq. Ft.



OPT. BEDROOM 5 & BATH 3  
Adds: 310 Sq. Ft.

Woodside Homes reserves the right to change elevations, specifications, materials and prices without notice. All square footages are approximate. Window location, porches, ceiling heights and room dimensions vary per elevation. The availability of certain options is subject to construction status and schedule. Optional features may be predetermined and included at additional cost on select homes. Renderings are artist's conception only.

Rev. 03/21



WoodsideHomes.com

2729 S. Waterview Drive, Saratoga Springs, UT 84043

