

Two Story • 2,566 Sq. Ft. • 4 Bedrooms • 2.5 Baths • 2-Bay Garage



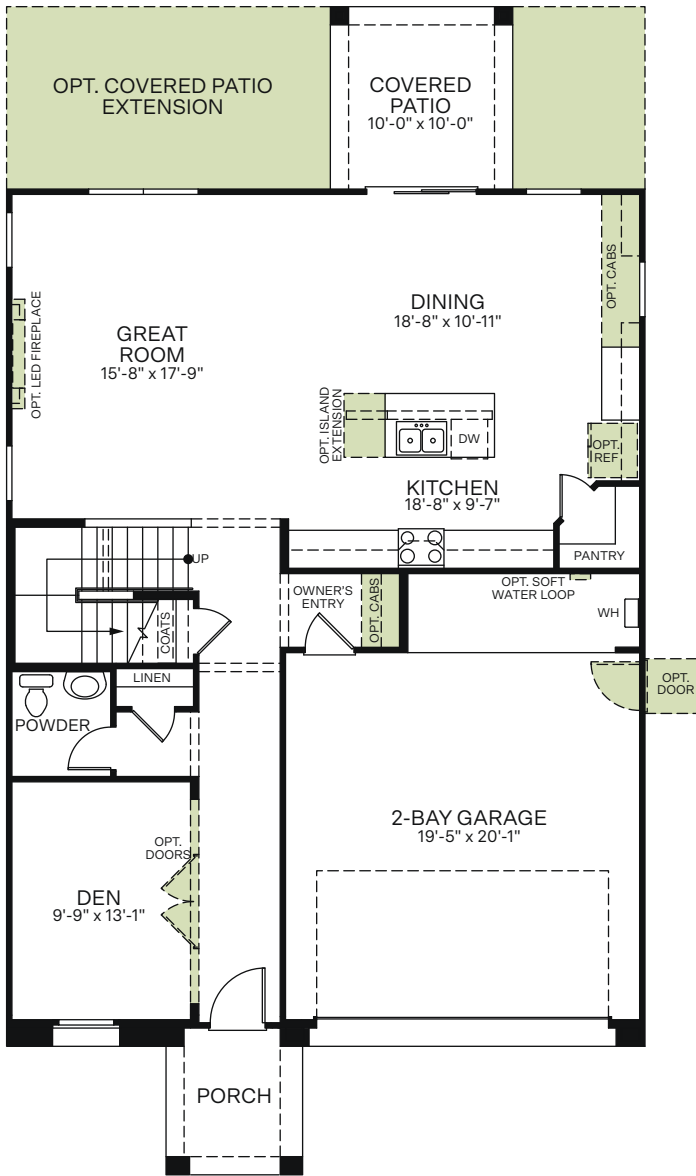
Spanish (A)



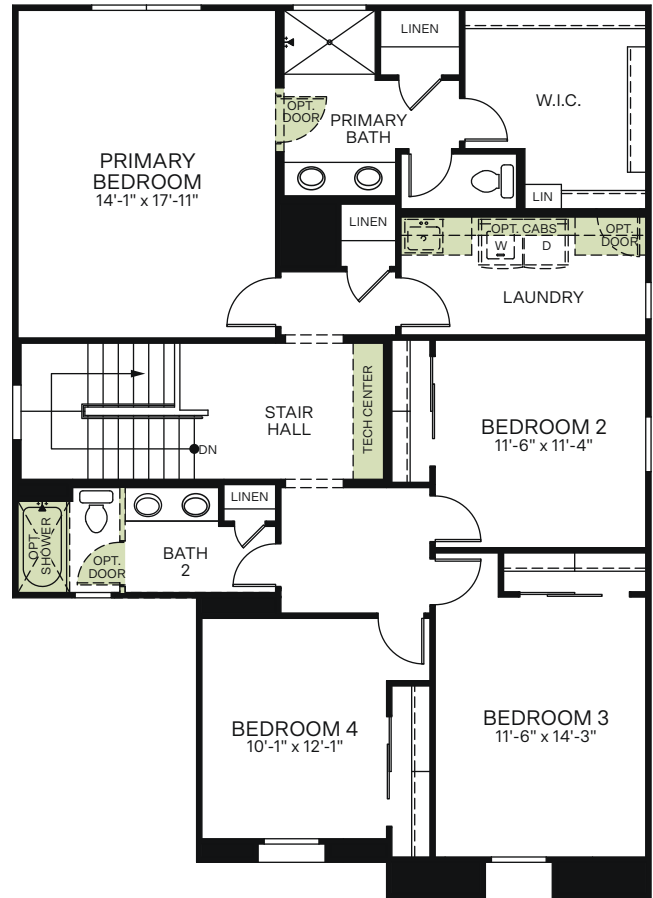
Craftsman (B)



Western Prairie (C)



FIRST FLOOR

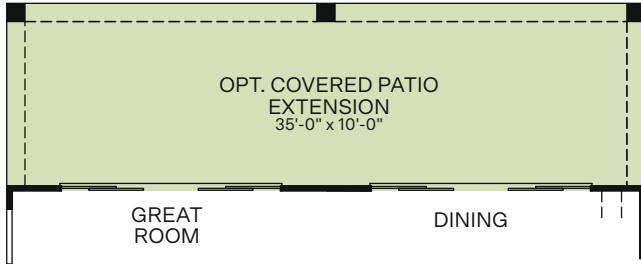


SECOND FLOOR

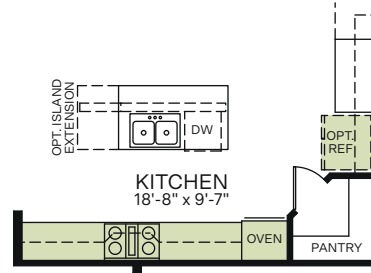


Woodside Homes reserves the right to change floor plans, features, elevations, prices, materials and specifications without notice. All square footages and measurements are approximate. Please see Sales Professional for full details.  
02/2022

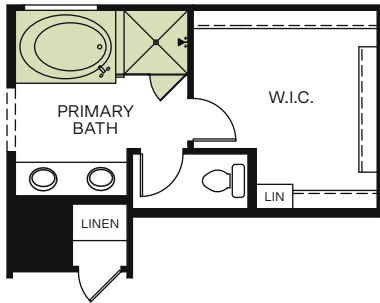
### OPTIONS



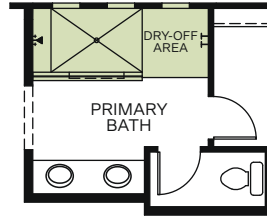
OPTIONAL 12 FT. CENTER SLIDING GLASS DOORS AT GREAT ROOM AND DINING  
(SLIDING DOORS SOLD INDIVIDUALLY AND ONLY AVAILABLE WITH COVERED PATIO EXTENSION)



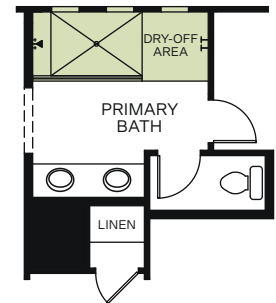
OPTIONAL KITCHEN APPLIANCE LAYOUT



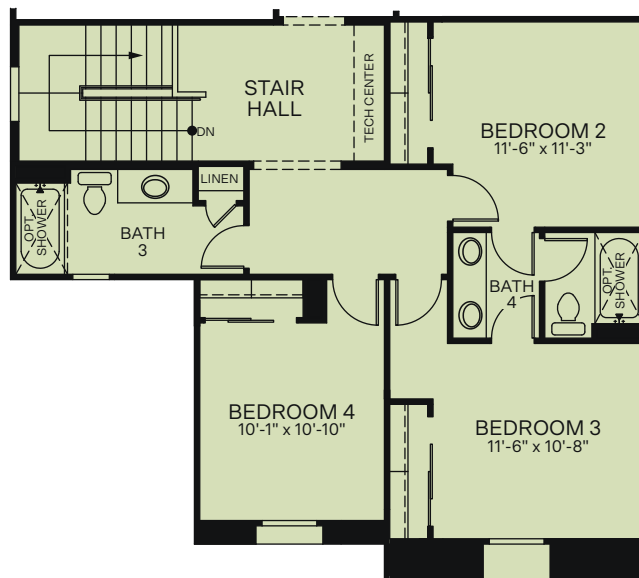
OPTIONAL SEPARATE TUB/SHOWER AT PRIMARY BATHROOM



OPTIONAL EXTENDED SHOWER WITH HALF WALL AT PRIMARY BATHROOM



OPTIONAL EXTENDED SHOWER WITH FULL GLASS AT PRIMARY BATHROOM



OPTIONAL JACK & JILL BATH 4