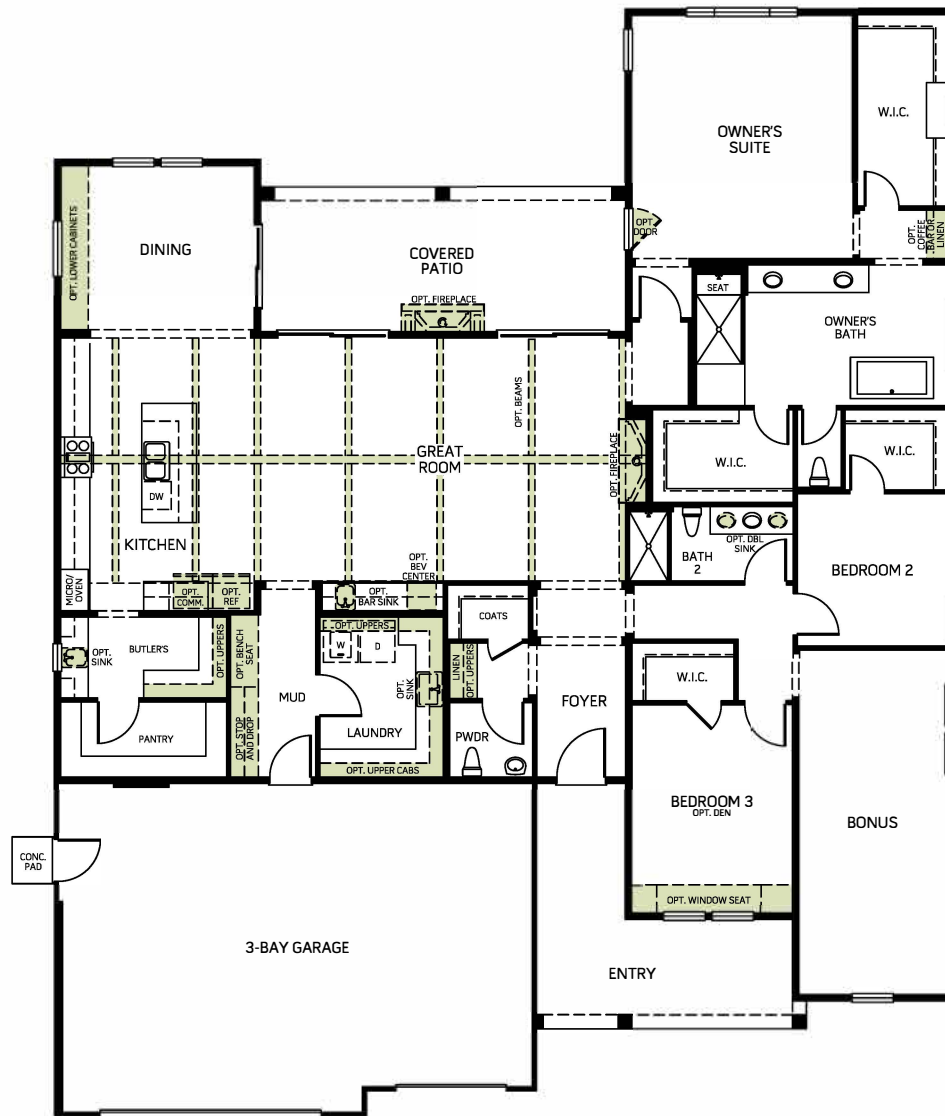


THE FOXFIELD - 6520

One Story • 3,164 Sq. Ft • 2-4 Bedrooms • 2.5 Baths
Great Room • Kitchen with Island • Dining • 3-Bay Garage



FLOOR PLAN

Woodside Homes reserves the right to change elevations, specifications, materials and prices without notice. All square footages are approximate. Window location, porches, ceiling heights and room dimensions vary per elevation. The availability of certain options is subject to construction status and schedule. Optional features may be predetermined and included at additional cost on select homes. Renderings are artist's conception only.

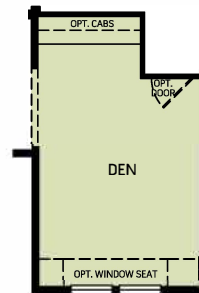


THE FOXFIELD - 6520

OPTIONS



OPT. BUNK ROOM ILO BONUS ROOM



OPT. DEN ILO BEDROOM 3

Woodside Homes reserves the right to change elevations, specifications, materials and prices without notice. All square footages are approximate. Window location, porches, ceiling heights and room dimensions vary per elevation. The availability of certain options is subject to construction status and schedule. Optional features may be predetermined and included at additional cost on select homes. Renderings are artist's conception only.

