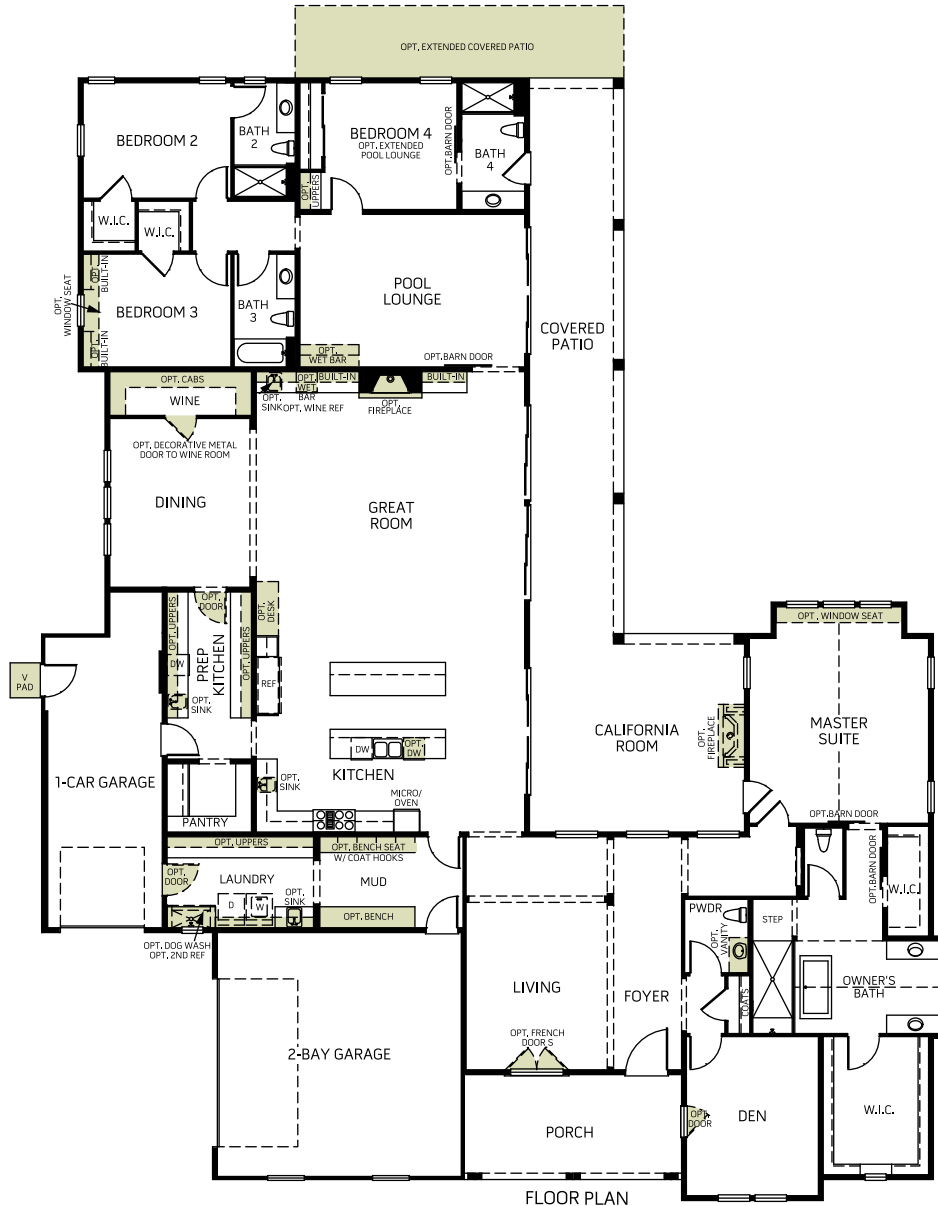


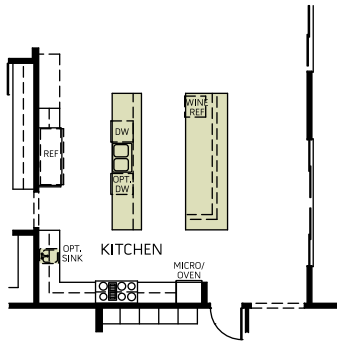
**The Ashdene - 8640**

One Story • 4,838 Sq. Ft • 3-4 Bedrooms • 4.5 Baths  
Great Room • Kitchen with Island • Nook • Dining • Den • 3-Bay Garage

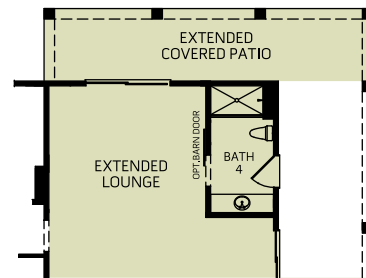


## The Ashdene - 8640

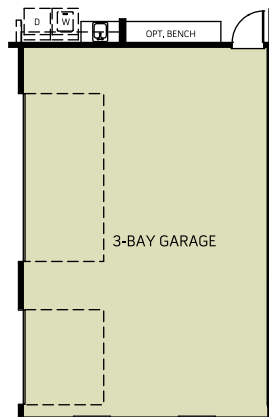
### OPTIONS



OPT. DOUBLE ISLAND AT KITCHEN



OPT. EXTENDED POOL LOUNGE AT BEDROOM 4



OPT. 3 CAR GARAGE

Woodside Homes reserves the right to change elevations, specifications, materials and prices without notice. All square footages are approximate. Window location, porches, ceiling heights and room dimensions vary per elevation. The availability of certain options is subject to construction status and schedule. Optional features may be predetermined and included at additional cost on select homes. Renderings are artist's conception only.



WoodsideHomes.com

Alison.Kuenzinger@woodsidehomes.com