

Ashwood at Cadence

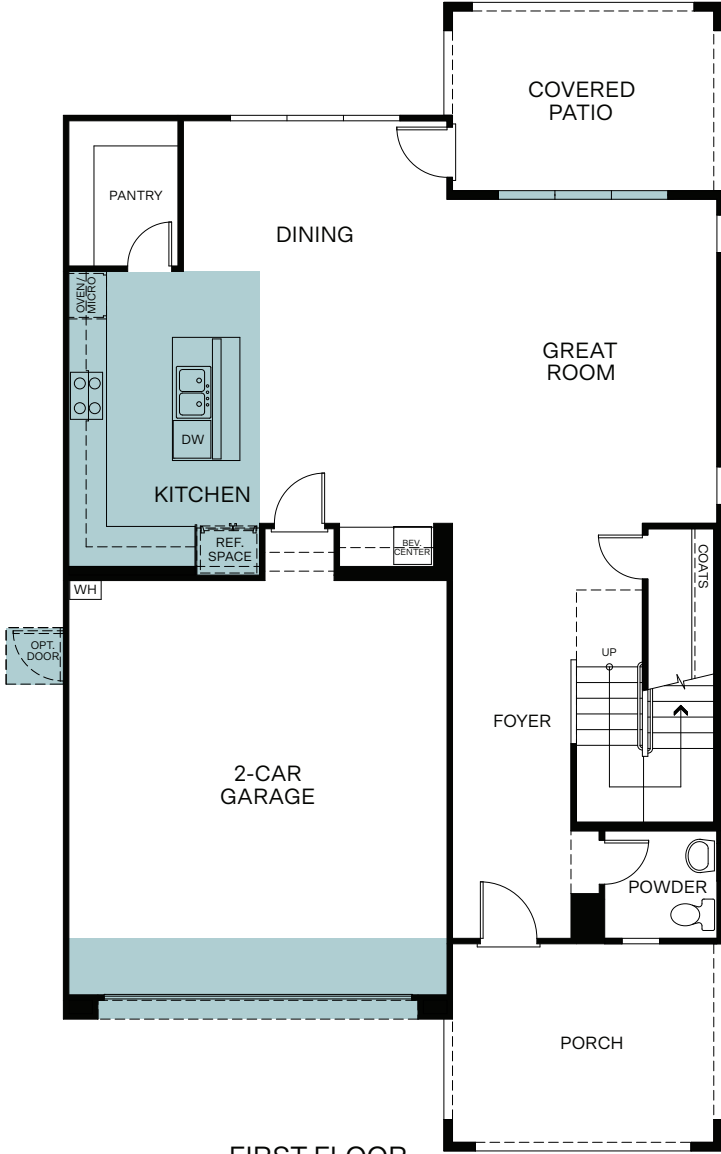
Plan 1-Oakley



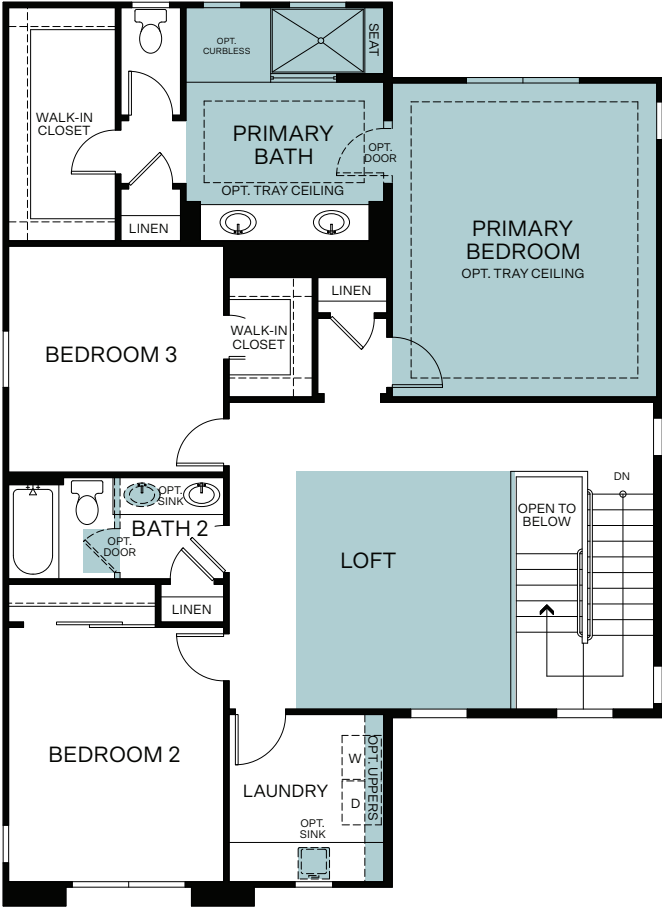
Two Story 2,441 Sq. Ft.

PLAN 1 - OAKLEY

2,441 Finished Sq. Ft. • 3 Bedrooms • 2.5 Baths



FIRST FLOOR



SECOND FLOOR

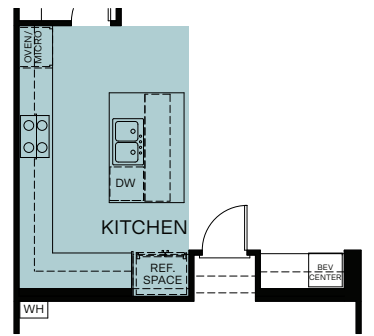
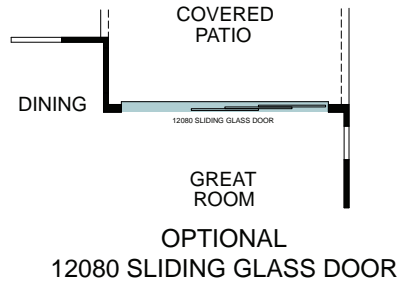
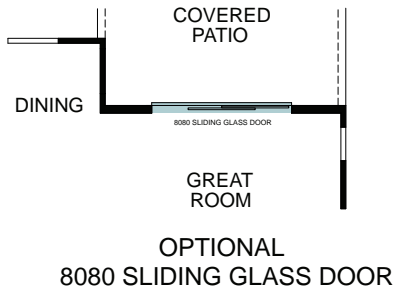


Woodside Homes reserves the right to change floor plans, features, elevations, prices, materials and specifications without notice. All square footages and measurements are approximate. Please see Sales Professional for full details. 04/2024

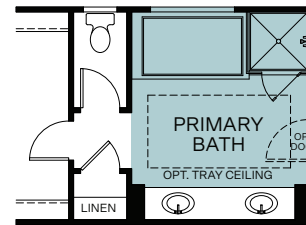
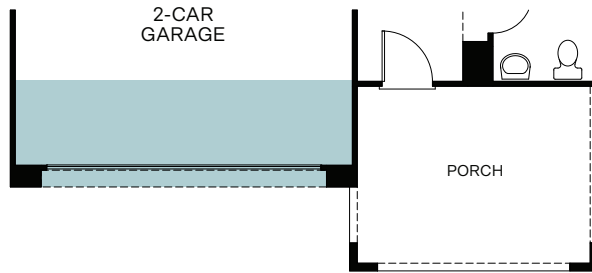


PLAN 1 - OAKLEY

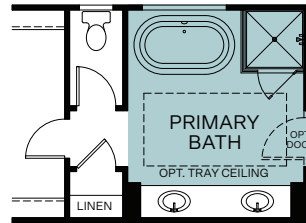
2,441 Finished Sq. Ft. • 3 Bedrooms • 2.5 Baths



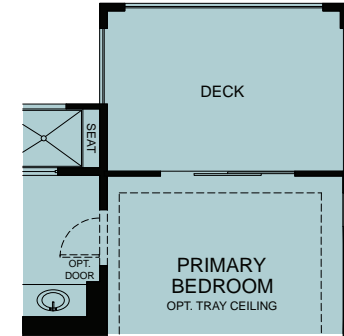
OPTIONAL SUPER ISLAND



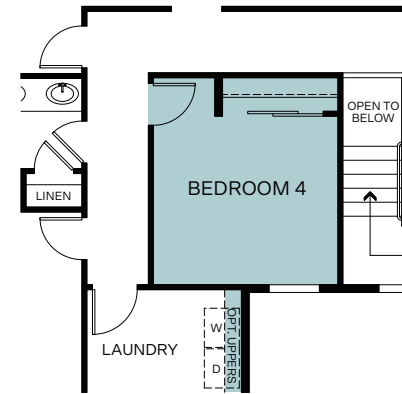
OPTIONAL DROP-IN TUB



OPTIONAL FREESTANDING TUB



OPTIONAL 2ND FLOOR DECK



OPTIONAL BEDROOM 4/ILO LOFT



Woodside Homes reserves the right to change floor plans, features, elevations, prices, materials and specifications without notice. All square footages and measurements are approximate. Please see Sales Professional for full details. 04/2024

