

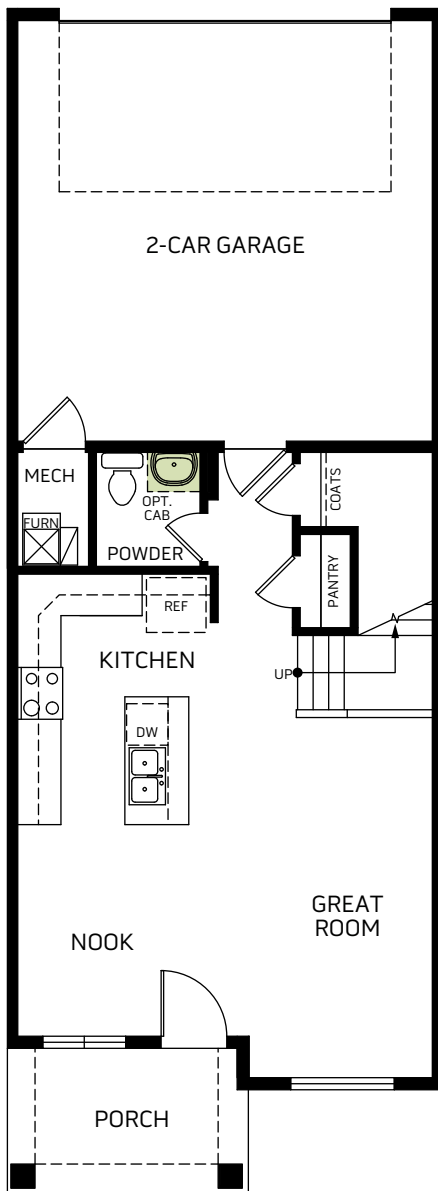


Woodside Homes®
BETTER BY DESIGN

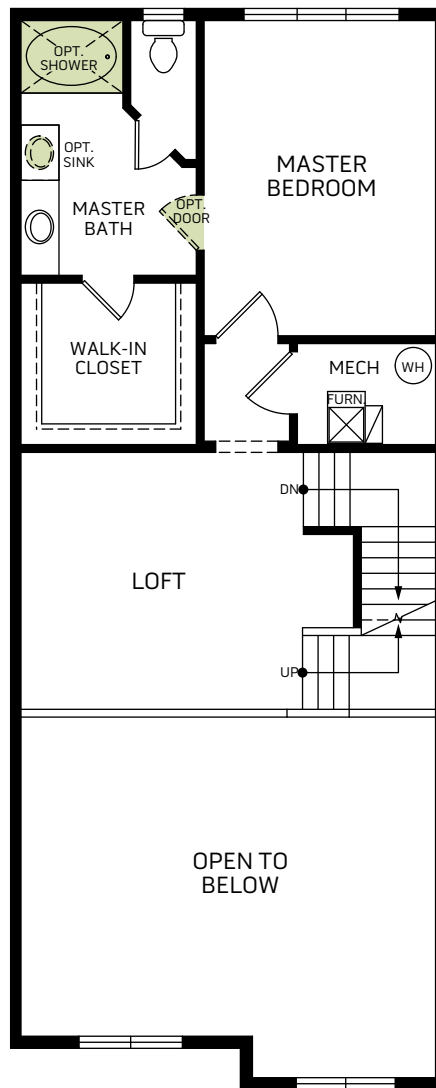
Legacy
at Salt Point

Washington

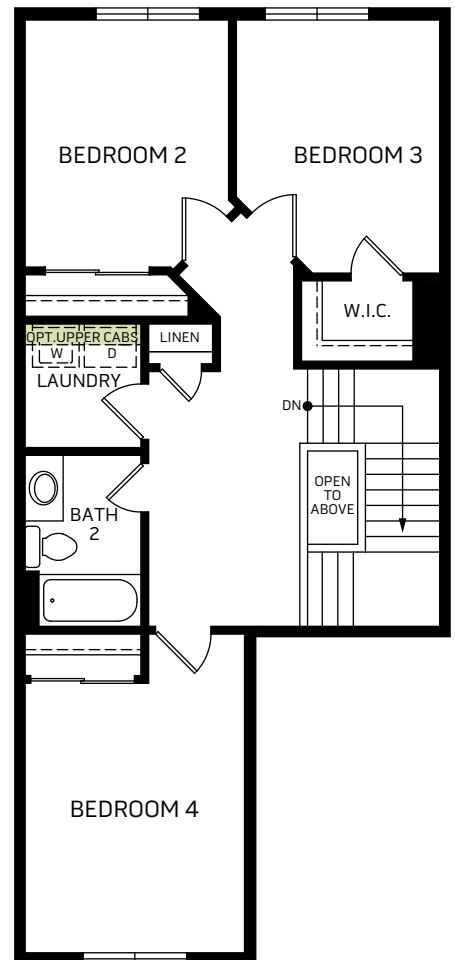
Three-story • 2,109 Finished Sq. Ft. • 4 Bedrooms • 2.5 Baths • Great Room •
Loft • Walk-In Closet • 2 Car Garage



FIRST FLOOR
632 Sq. Ft.



SECOND FLOOR
744 Sq. Ft.



THIRD FLOOR
733 Sq. Ft.



Woodside Homes reserves the right to change elevations, specifications, materials and prices without notice. All square footages are approximate. Window location, porches, ceiling heights and room dimensions vary per elevation. The availability of certain options is subject to construction status and schedule. Optional features may be predetermined and included at additional cost on select homes. Renderings are artist's conception only. Rev. 02/20



WoodsideHomes.com

3793 South 3250 West, West Haven, UT 84401



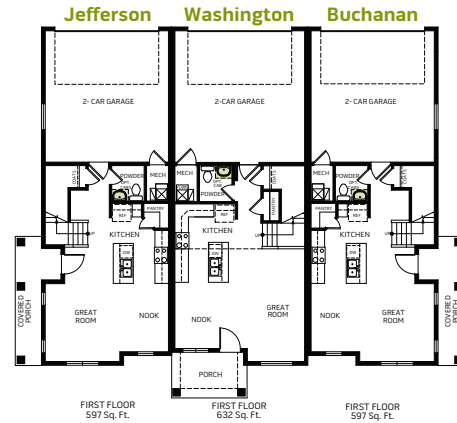
Woodside Homes®
BETTER BY DESIGN

Legacy
at Salt Point

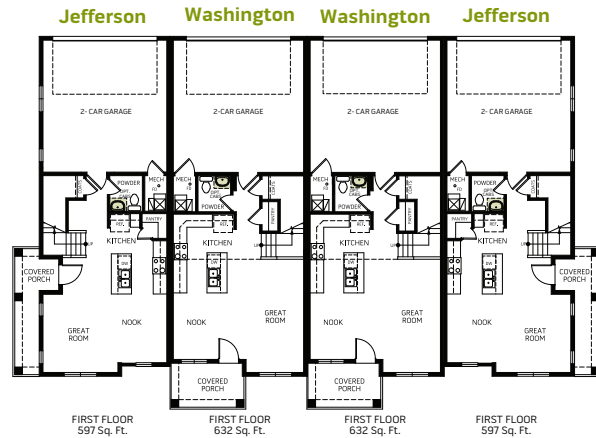
3 PLEX, 4 PLEX B & 5 PLEX



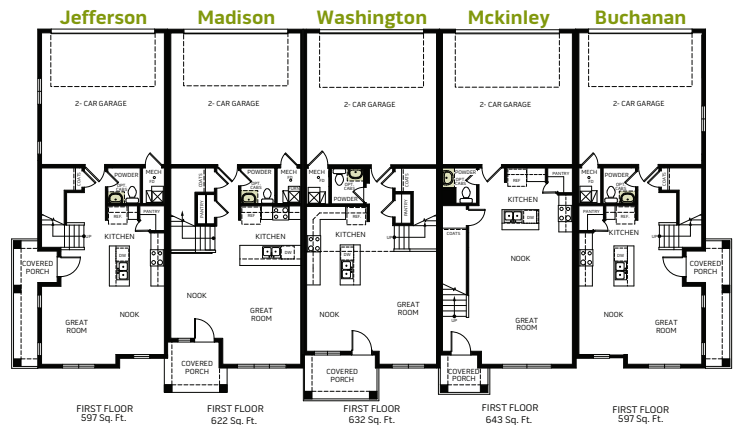
3 PLEX



4 PLEX B



5 PLEX



Woodside Homes reserves the right to change elevations, specifications, materials and prices without notice. All square footages are approximate. Window location, porches, ceiling heights and room dimensions vary per elevation. The availability of certain options is subject to construction status and schedule. Optional features may be predetermined and included at additional cost on select homes. Renderings are artist's conception only.
Rev.03/21



WoodsideHomes.com
3793 South 3250 West, West Haven, UT 84401