



Spanish (A)

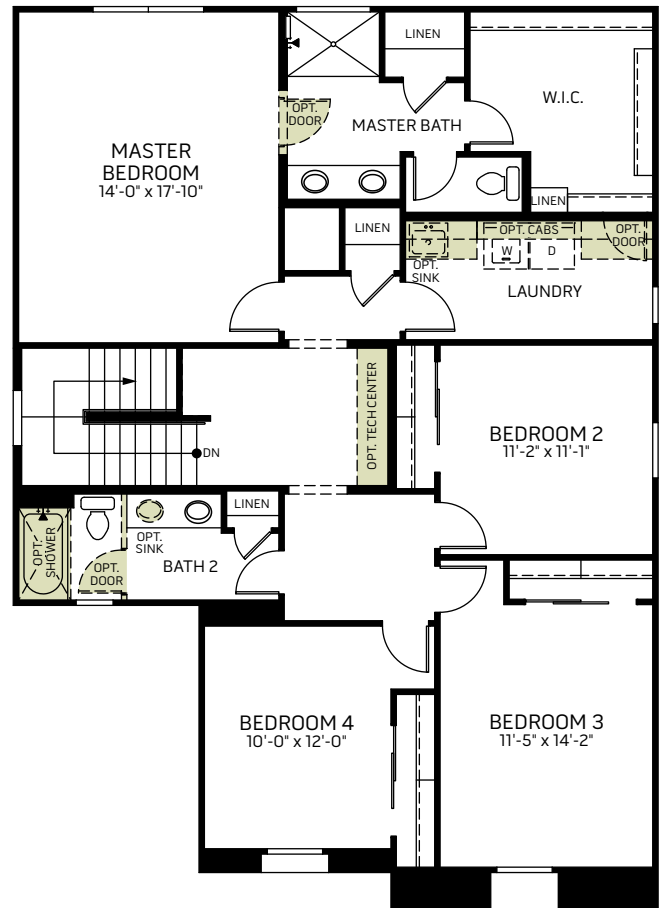
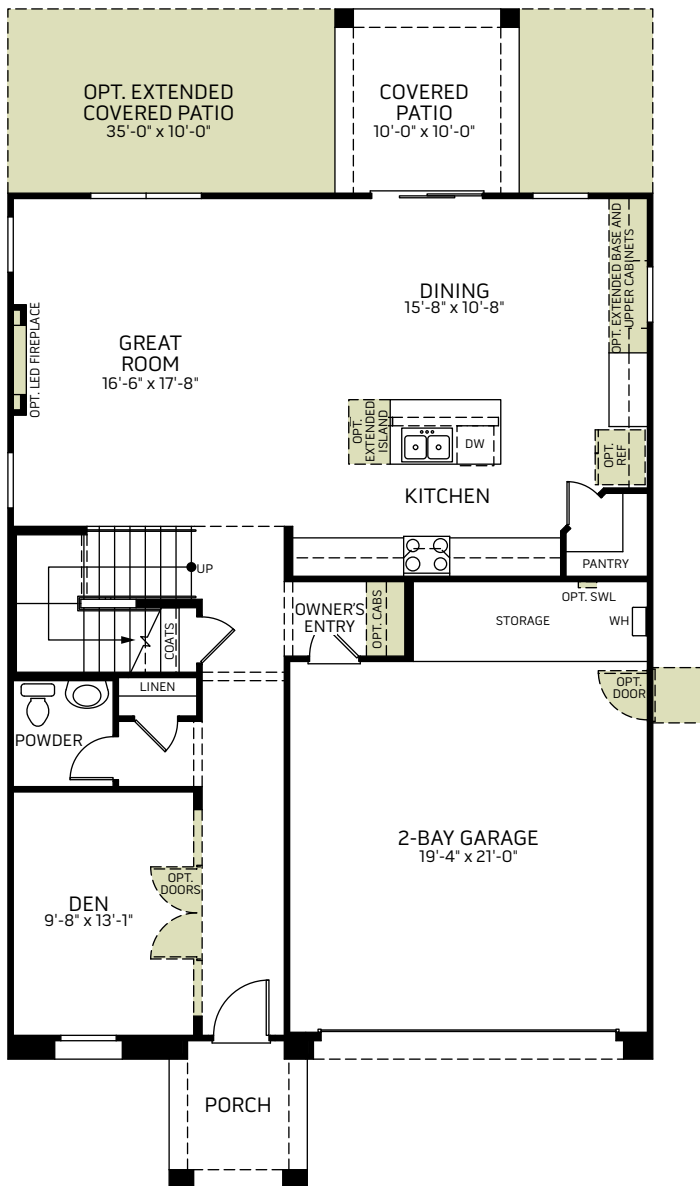


Craftman (B)



Western Prairie (C)

Two-Story • 2,566 Sq. Ft. • 4 Bedrooms • 2.5 Baths • Great Room • Dining
Kitchen with Island • Laundry • 2-Bay Garage

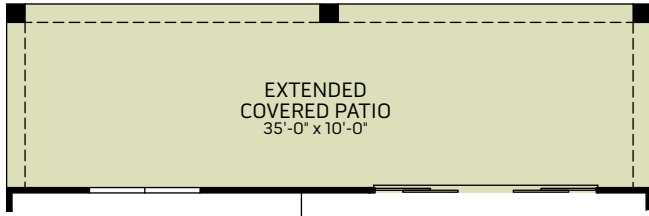


FLOOR PLAN

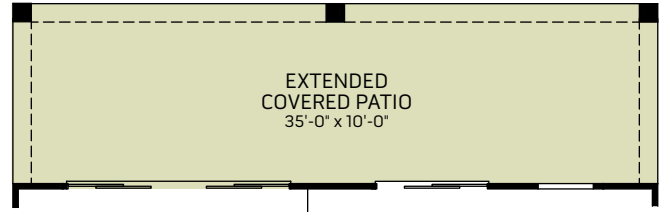
Woodside Homes reserves the right to change floor plans, maps, prices, and specifications without notice. Prices are subject to change without notice. The model information listed, including availability, floor plans, elevations, features, and other information are subject to change. Model home interior decorating, landscaping, fencing, and other amenities are for display purposes only. All renderings, floor plans, and maps are artist conceptions and are not intended to be an actual depiction of the buildings, fencing, driveways, or landscaping. Optional features may be included at additional cost and are subject to construction cut-off dates. All square foot measurements, elevations, features, and floor plans are approximate. This advertisement is for illustration purposes only and not part of a legal contract. Please see Sales Representative for full details, and additional information about options shown dashed on base floor plan. Woodside Homes Sales AZ, LLC. 12/2020



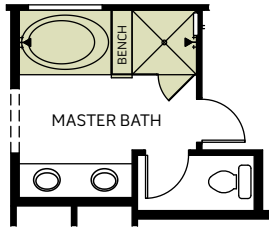
OPTIONS



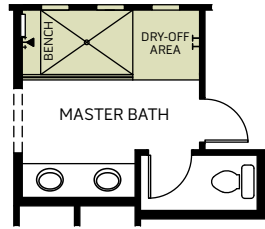
OPTIONAL 12 FT. CENTER SLIDING GLASS DOOR
AT DINING ROOM
(ONLY AVAILABLE WITH OPTIONAL EXTENDED COVERED PATIO)



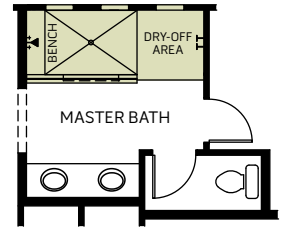
OPTIONAL 12 FT. CENTER SLIDING GLASS DOOR
AT GREAT ROOM
(ONLY AVAILABLE WITH OPTIONAL EXTENDED COVERED PATIO)



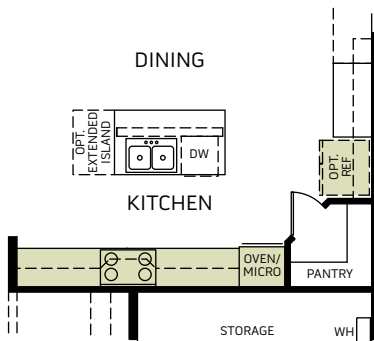
OPTIONAL SEPARATE TUB
AND SHOWER AT MASTER BATH



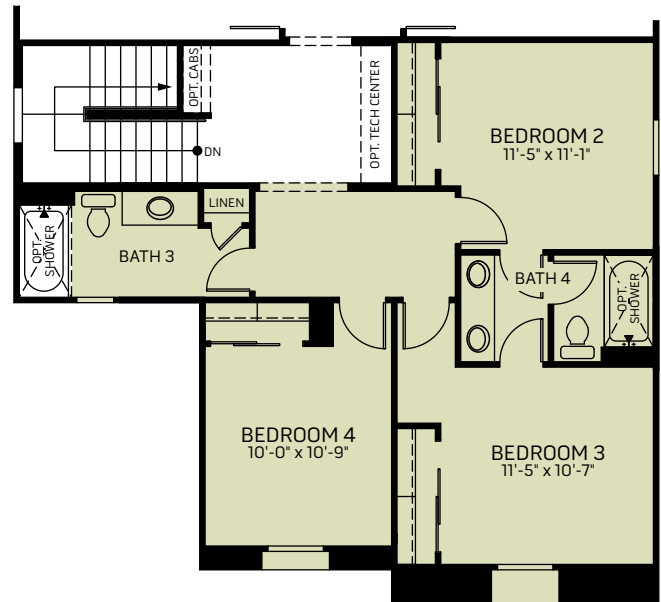
OPTIONAL EXTENDED SHOWER
WITH FULL GLASS AT MASTER BATH



OPTIONAL EXTENDED SHOWER WITH HALF
WALL AND GLASS AT MASTER BATH



OPTIONAL KITCHEN
APPLIANCE PACKAGE



OPTIONAL JACK AND JILL BATH 4