

Single Story • 1,485 Sq. Ft. • 3 Bedrooms • 2 Baths • 2-Bay Garage



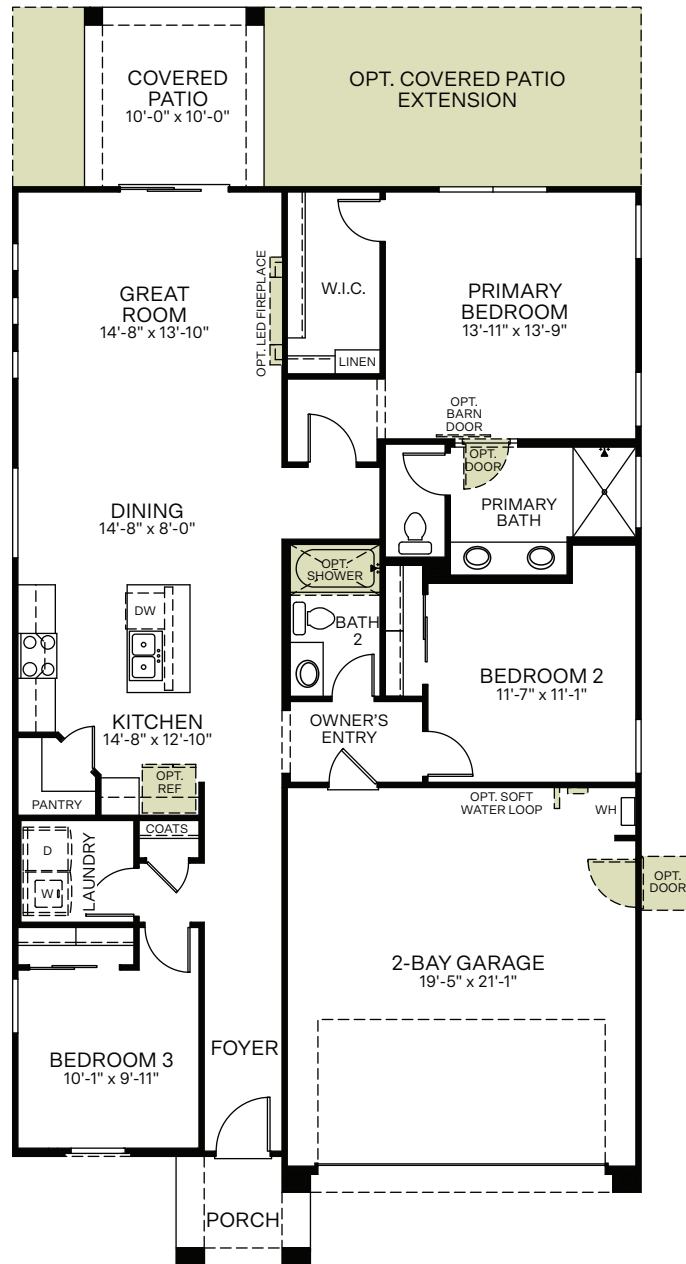
Spanish (A)



Craftsman (B)

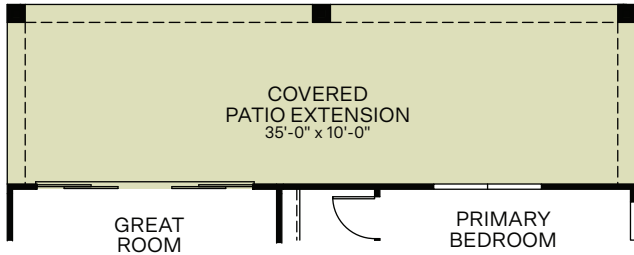


Western Prairie (C)

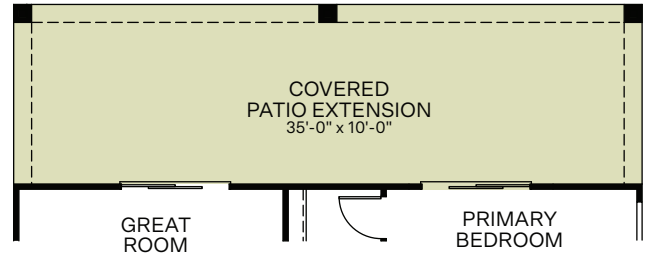


Woodside Homes reserves the right to change floor plans, features, elevations, prices, materials and specifications without notice. All square footages and measurements are approximate. Please see Sales Professional for full details.
02/2022

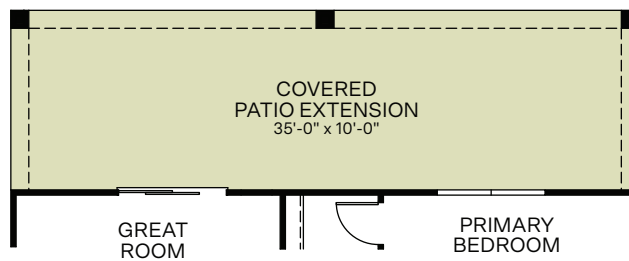
OPTIONS



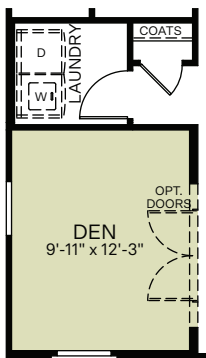
OPTIONAL 12 FT. CENTER SLIDING GLASS DOOR
AT GREAT ROOM
(ONLY AVAILABLE WITH COVERED PATIO EXTENSION)



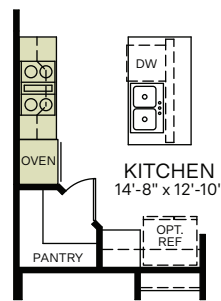
OPTIONAL 6 FT. SLIDING GLASS DOOR
AT PRIMARY BEDROOM
(ONLY AVAILABLE WITH COVERED PATIO EXTENSION)



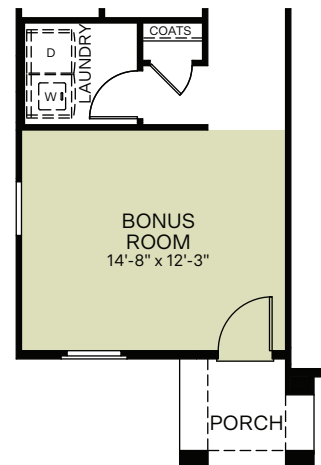
OPTIONAL COVERED PATIO EXTENSION



OPTIONAL DEN
ILO BEDROOM 3



OPTIONAL KITCHEN
APPLIANCE LAYOUT



OPTIONAL BONUS ROOM
ILO BEDROOM 3