

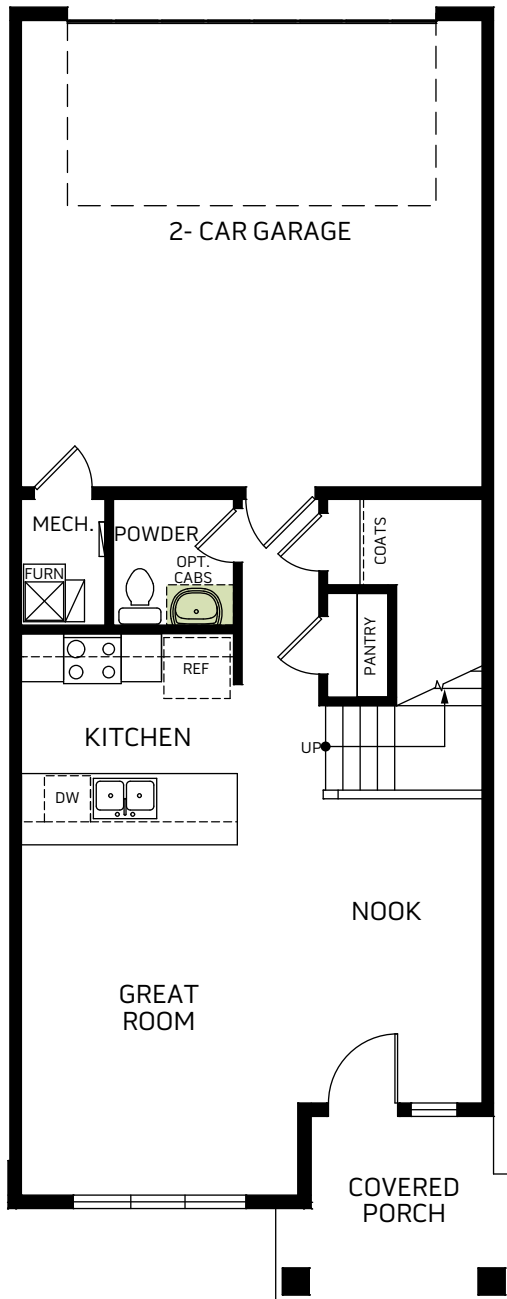


Woodside Homes®
BETTER BY DESIGN

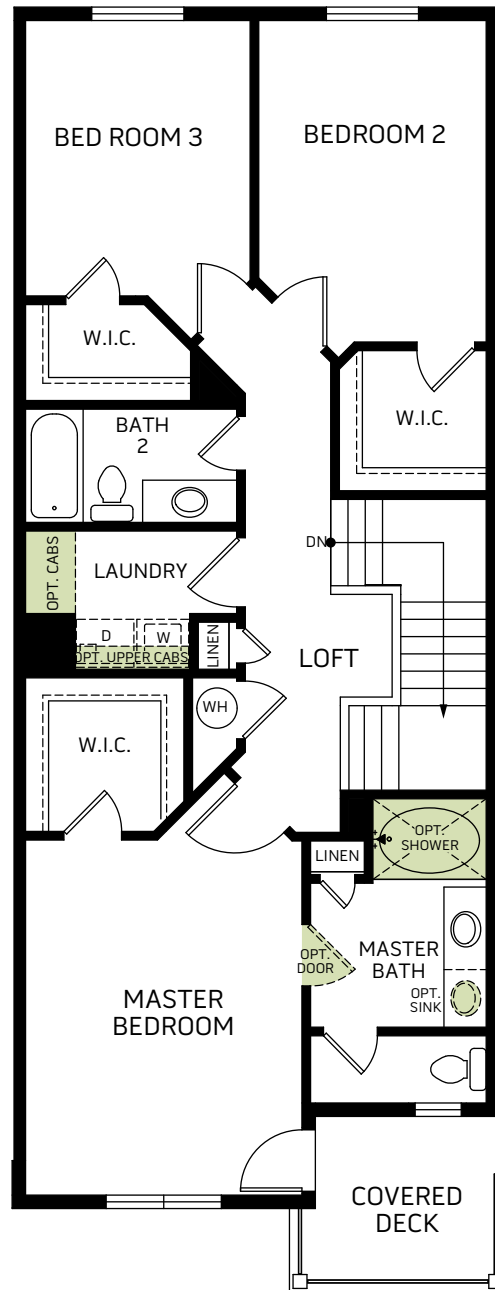
Legacy
at Salt Point

Madison

Two-story • 1,611 Finished Sq. Ft. • 3 Bedrooms • 2.5 Baths • Great Room •
Walk-In Closet • 2 Car Garage



FIRST FLOOR
622 Sq. Ft.



SECOND FLOOR
989 Sq. Ft.



WoodsideHomes.com

3793 South 3250 West, West Haven, UT 84401



Woodside Homes reserves the right to change elevations, specifications, materials and prices without notice. All square footages are approximate. Window location, porches, ceiling heights and room dimensions vary per elevation. The availability of certain options is subject to construction status and schedule. Optional features may be predetermined and included at additional cost on select homes. Renderings are artist's conception only. Rev. 07/20



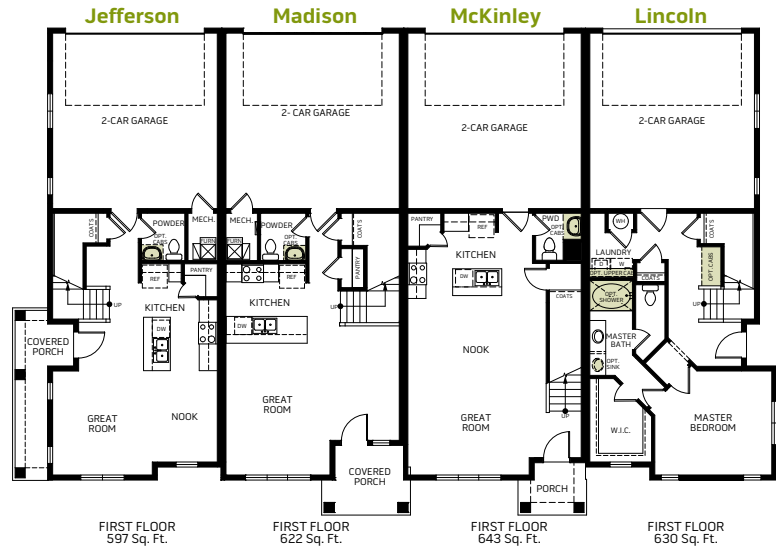
Woodside Homes®
BETTER BY DESIGN

Legacy
at Salt Point

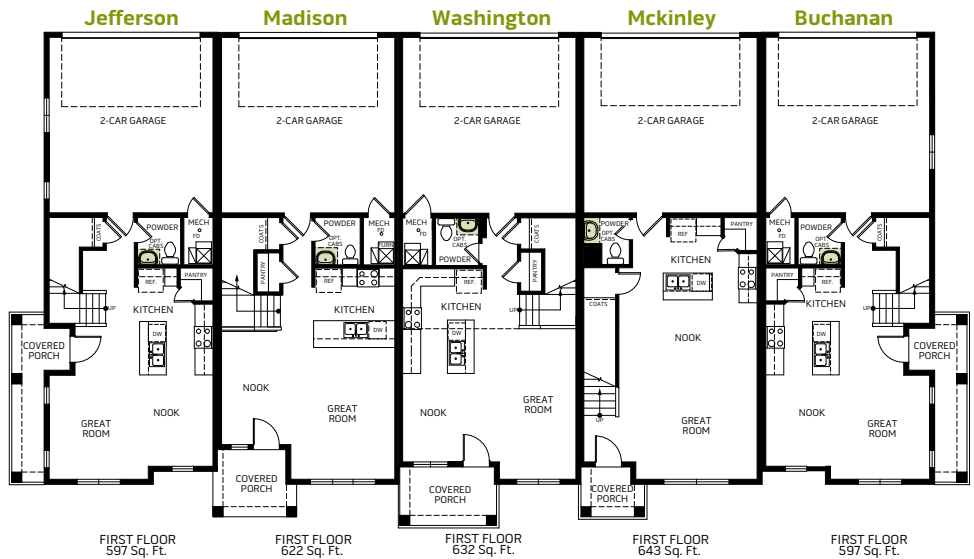
4 PLEX A & 5 PLEX



4 PLEX A



5 PLEX



Woodside Homes reserves the right to change elevations, specifications, materials and prices without notice. All square footages are approximate. Window location, porches, ceiling heights and room dimensions vary per elevation. The availability of certain options is subject to construction status and schedule. Optional features may be predetermined and included at additional cost on select homes. Renderings are artist's conception only.
Rev.03/21



WoodsideHomes.com

3793 South 3250 West, West Haven, UT 84401