

PLAN 4 (PRELIMINARY)



A: Mid-Century Modern

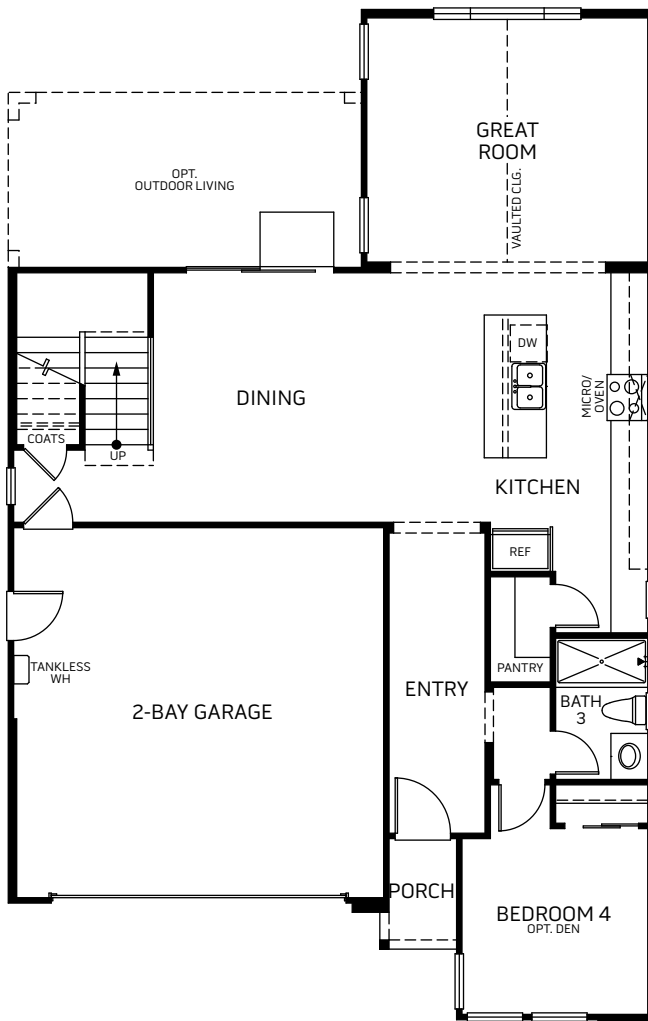


B: Modern Prairie

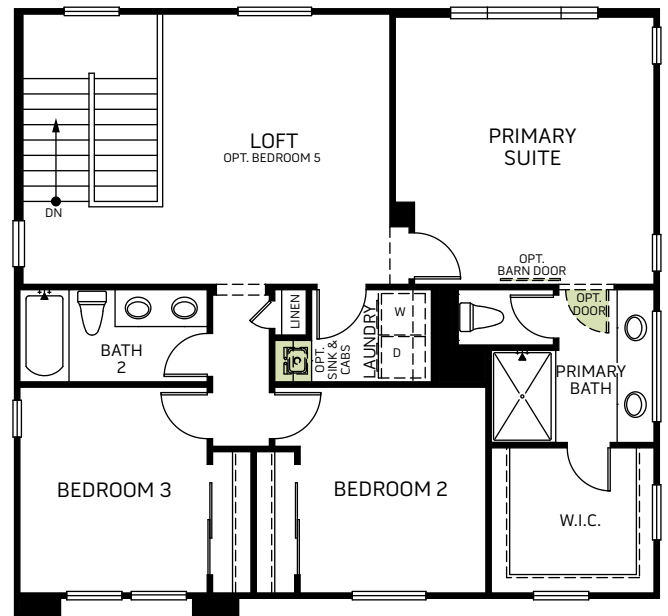


C: Wine Country

Two Story • 2,111 Sq. Ft. • 4 Bedrooms • 3 Baths
Great Room • Kitchen with Island • Dining • Loft • 2-Bay Garage



FIRST FLOOR



SECOND FLOOR

Woodside Homes reserves the right to change elevations, specifications, materials and prices without notice. All square footages are approximate. Window location, porches, ceiling heights and room dimensions vary per elevation. The availability of certain options is subject to construction status and schedule. Optional features may be predetermined and included at additional cost on select homes. Renderings are artist's conception only. REV 09/20



WoodsideHomes.com/Norcal
730 Blair Bridge Rd. Lincoln, CA 95648
MyNewHome-NorCal@WoodsideHomes.com
877-231-0059 or 916-597-4079

PLAN 4 (PRELIMINARY)

OPTIONS



A: Mid-Century Modern

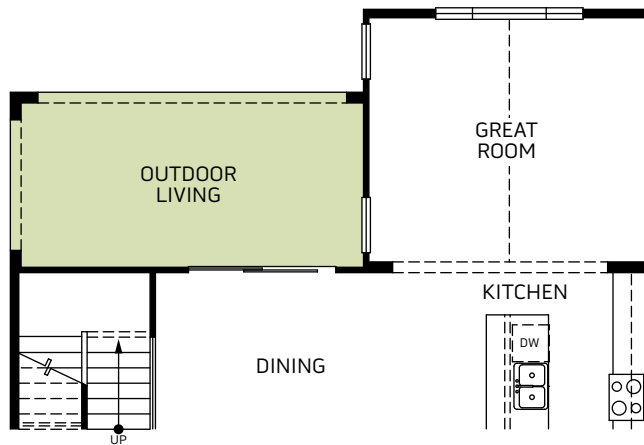


B: Modern Prairie

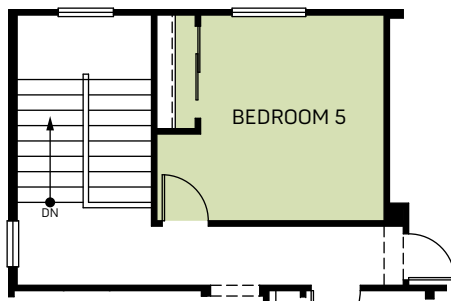


C: Wine Country

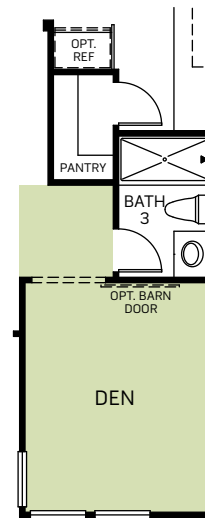
Two Story • 2,111 Sq. Ft. • 4 Bedrooms • 3 Baths
Great Room • Kitchen with Island • Dining • Loft • 2-Bay Garage



OPT. OUTDOOR LIVING



OPT. BEDROOM 5



OPT. DEN

