



**Woodside Homes®**  
BETTER BY DESIGN

*Still Water*  
Haven

## Addison

Two-story • 2,577 Finished Sq. Ft. • 4-5 Bedrooms • 2.5-3.5 Baths • Living Room • Main Floor Master Suite  
Main Floor Laundry • Opt. Upper Level Bonus Room • 2-3 Car Garage



A



B



C



D



Woodside Homes reserves the right to change elevations, specifications, materials and prices without notice. All square footages are approximate. Window location, porches, ceiling heights and room dimensions vary per elevation. The availability of certain options is subject to construction status and schedule. Optional features may be predetermined and included at additional cost on select homes. Renderings are artist's conception only. Rev. 03/19



WoodsideHomes.com  
1323 W. Silverhollow Dr. Syracuse, UT 84075



**Woodside Homes®**  
BETTER BY DESIGN

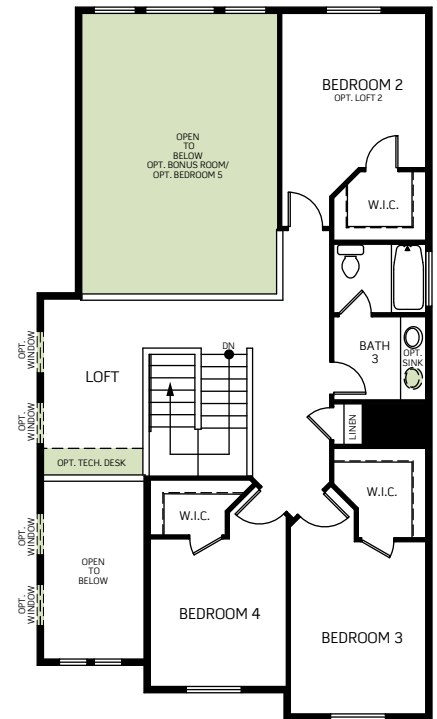
*Still Water*  
Haven

## Addison

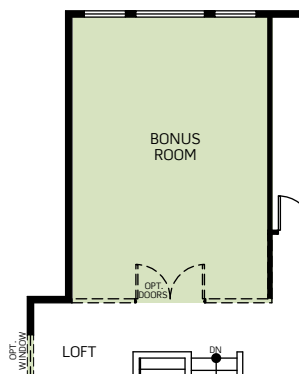
Two-story • 2,577 Finished Sq. Ft. • 4-5 Bedrooms • 2.5-3.5 Baths • Living Room • Main Floor Master Suite  
Main Floor Laundry • Opt. Upper Level Bonus Room • 2-3 Car Garage



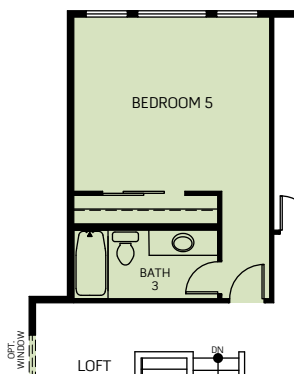
FIRST FLOOR  
1,670 Sq. Ft.



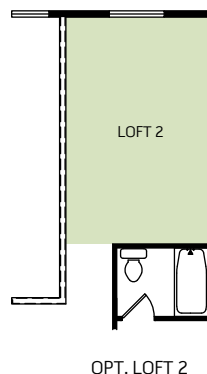
SECOND FLOOR  
907 Sq. Ft.



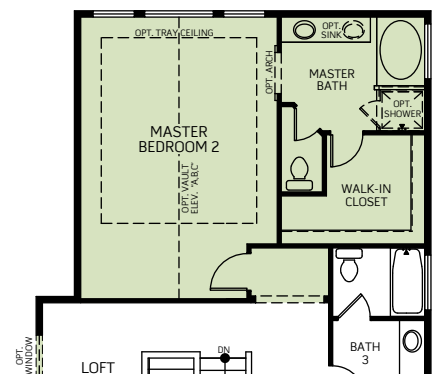
OPT. BONUS ROOM  
Adds: 310 Sq. Ft.



OPT. BEDROOM 5  
Adds: 310 Sq. Ft.



OPT. LOFT 2



OPT. MASTER SUITE 2  
Adds: 310 Sq. Ft.



Woodside Homes reserves the right to change elevations, specifications, materials and prices without notice. All square footages are approximate. Window location, porches, ceiling heights and room dimensions vary per elevation. The availability of certain options is subject to construction status and schedule. Optional features may be predetermined and included at additional cost on select homes. Renderings are artist's conception only.  
Rev. 03/19



WoodsideHomes.com  
1323 W. Silverhollow Dr. Syracuse, UT 84075