

Two Story • 3,053 Sq. Ft. • 5 Bedrooms • 3.5 Baths • 2-Bay Garage



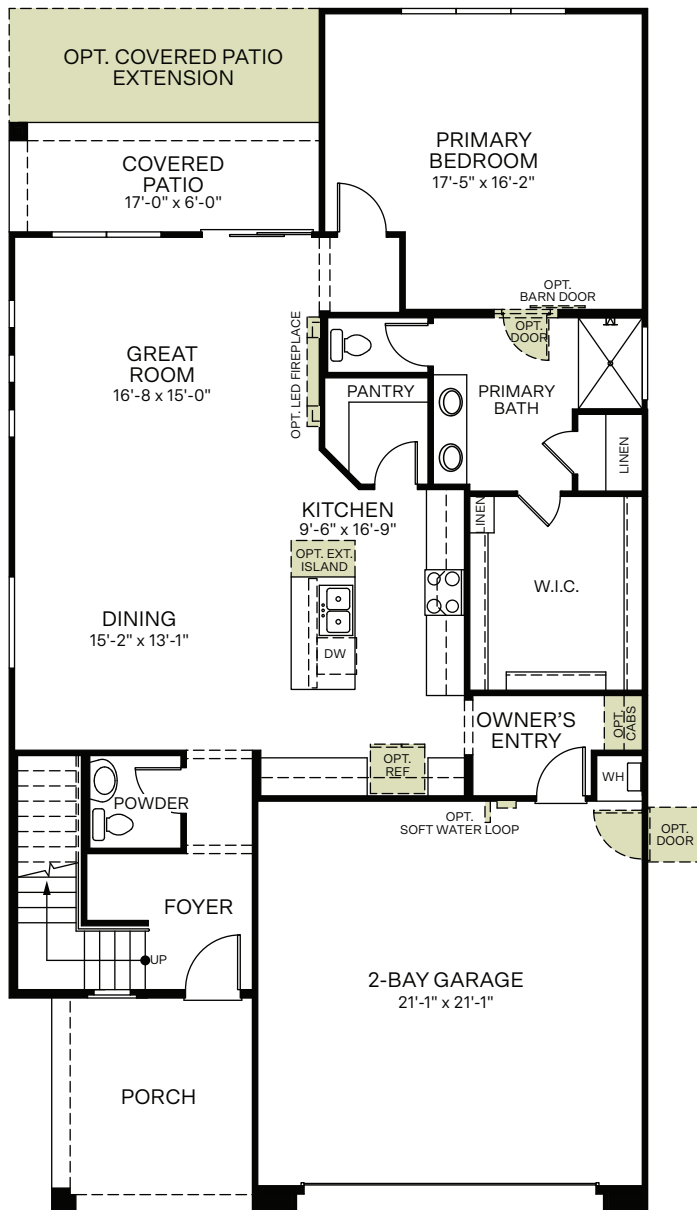
Spanish (A)



Craftsman (B)



Western Prairie (C)



FIRST FLOOR



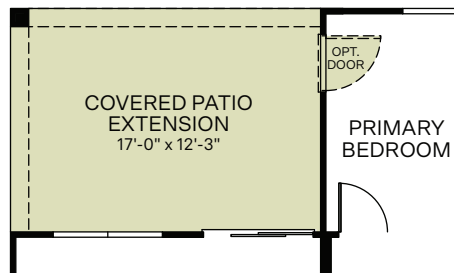
SECOND FLOOR



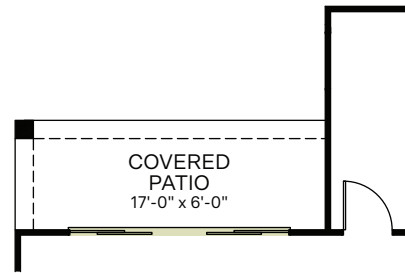
Woodside Homes reserves the right to change floor plans, features, elevations, prices, materials and specifications without notice. All square footages and measurements are approximate. Please see Sales Professional for full details.
02/2022



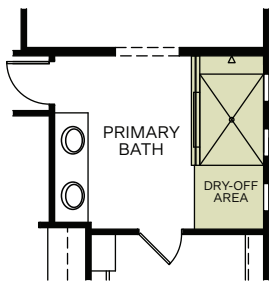
OPTIONS



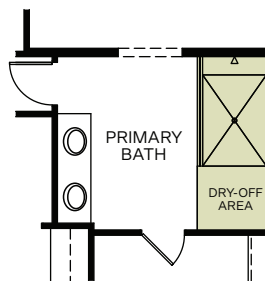
OPTIONAL COVERED PATIO EXTENSION



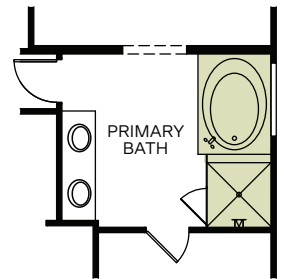
OPTIONAL 12 FT. CENTER SLIDING GLASS DOOR AT GREAT ROOM



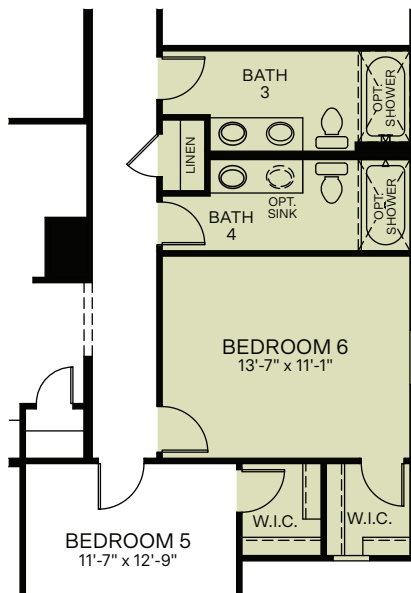
OPTIONAL EXTENDED SHOWER WITH HALF WALL AT PRIMARY BATHROOM



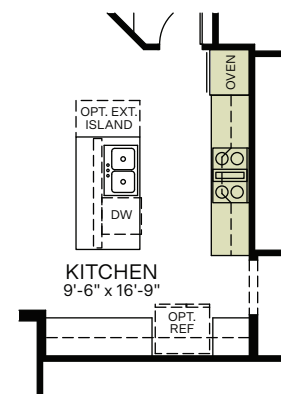
OPTIONAL EXTENDED SHOWER WITH FULL GLASS AT PRIMARY BATHROOM



OPTIONAL SEPARATE TUB / SHOWER AT PRIMARY BATHROOM



OPTIONAL BEDROOM 6 WITH BATH 4 ILO LOFT



OPTIONAL KITCHEN APPLIANCE LAYOUT