

## Gambel Oak

Two-story • 1,680 Finished Sq. Ft. • 3-4 Bedrooms • 2.5-3.5 Baths • Open Great Room  
Opt Master Suite • Opt Loft • Opt Bedroom 4 • Opt Pet Wash • Opt Covered Patio • 2-Car Garage



**Traditional (A)**



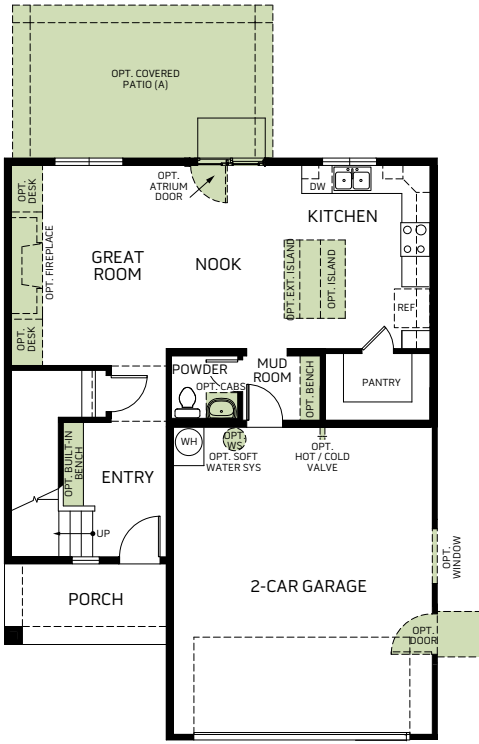
**Farmhouse (B)**



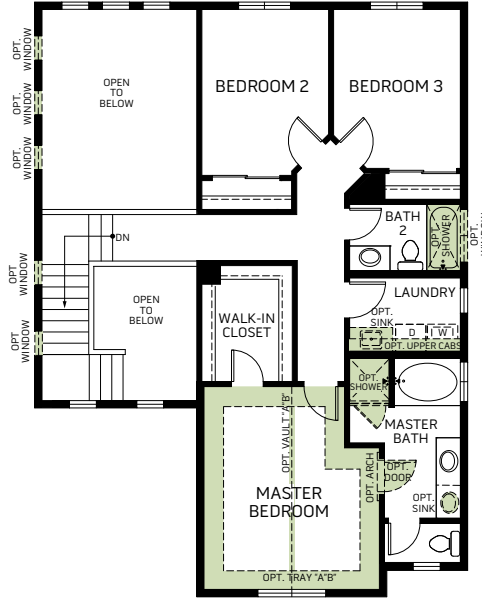
**Prairie (D)**

**Gambel Oak**

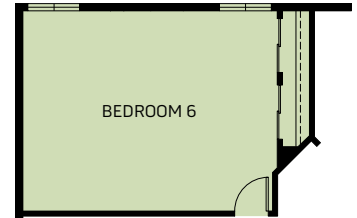
Two-story • 1,680 Finished Sq. Ft. • 3-4 Bedrooms • 2.5-3.5 Baths • Open Great Room  
Opt Master Suite • Opt Loft • Opt Bedroom 4 • Opt Pet Wash • Opt Covered Patio • 2-Car Garage



FIRST FLOOR  
762 Sq. Ft.



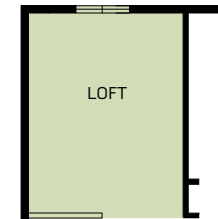
SECOND FLOOR  
918 Sq. Ft.



OPT. BEDROOM 6  
Adds: 172 Sq.Ft.



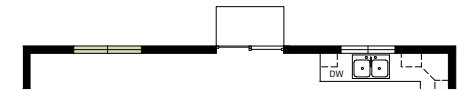
OPT. MASTER SUITE  
Adds: 172 Sq.Ft.



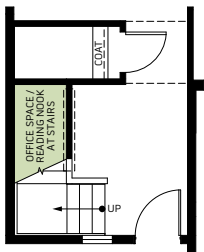
OPT. LOFT  
Adds: 172 Sq.Ft.



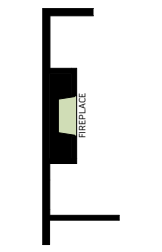
OPT. BEDROOM 4  
Adds: 172 Sq.Ft.



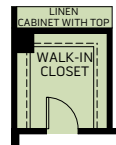
OPT. TRANSOM WINDOW PACKAGE



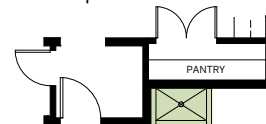
OPT. OFFICE SPACE /  
READING NOOK  
AT STAIRS



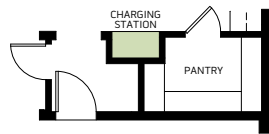
OPT. FIREPLACE  
AT GREAT ROOM



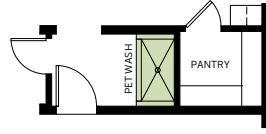
OPT. BASE CABINETS  
AT HALL



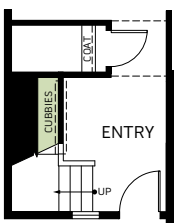
OPT. PET WASH  
AT GARAGE



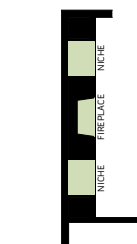
OPT. CHARGING STATION  
AT KITCHEN



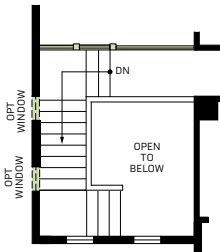
OPT. PET WASH  
AT MUDROOM



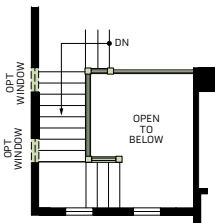
OPT. CUBBIES  
AT STAIRS



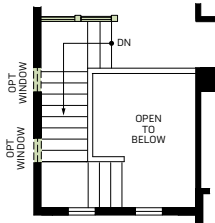
OPT. FIREPLACE  
W/NICHES  
AT GREAT ROOM



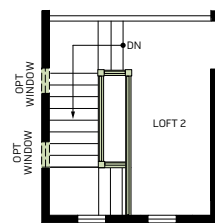
OPT. RAILING 1



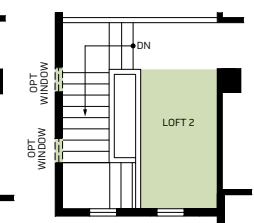
OPT. RAILING 2



OPT. RAILING 3



OPT. RAILING 4



OPT. LOFT 2  
Adds: 60 Sq.Ft.

Woodside Homes reserves the right to change elevations, specifications, materials and prices without notice. All square footages are approximate. Window location, porches, ceiling heights and room dimensions vary per elevation. The availability of certain options is subject to construction status and schedule. Optional features may be predetermined and included at additional cost on select homes. Renderings are artist's conception only. Rev. 09/21

