

Woodside Homes reserves the right to change floor plans, features, elevations, prices, materials and specifications without notice. All square footages and measurements are approximate. Please see Sales Professional for full details. March 2025. Woodside Homes of Fresno Inc CA DRE#01486712; Responsible Broker: Matt Smith CA DRE# 02031520



WoodsideHomes.com

Let's get you home.

The Orchards

At Copper Heights

SPRUCE 1307



TWO STORY 2,154 SQ. FT.

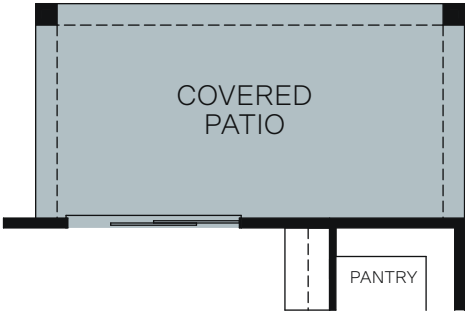




FIRST FLOOR



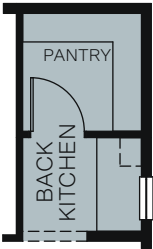
SECOND FLOOR



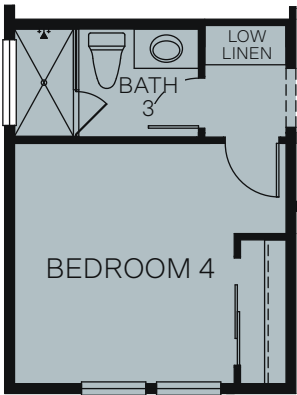
OPT. COVERED PATIO



OPT. CALIFORNIA ROOM



OPT. BACK KITCHEN
ILO SUPER PANTRY



OPT. BEDROOM 4/BATH 3
ILO DEN/POWDER